

Single Family

1090 SQFT

2 Beds

1/1 Baths

## PROPERTY DETAILS

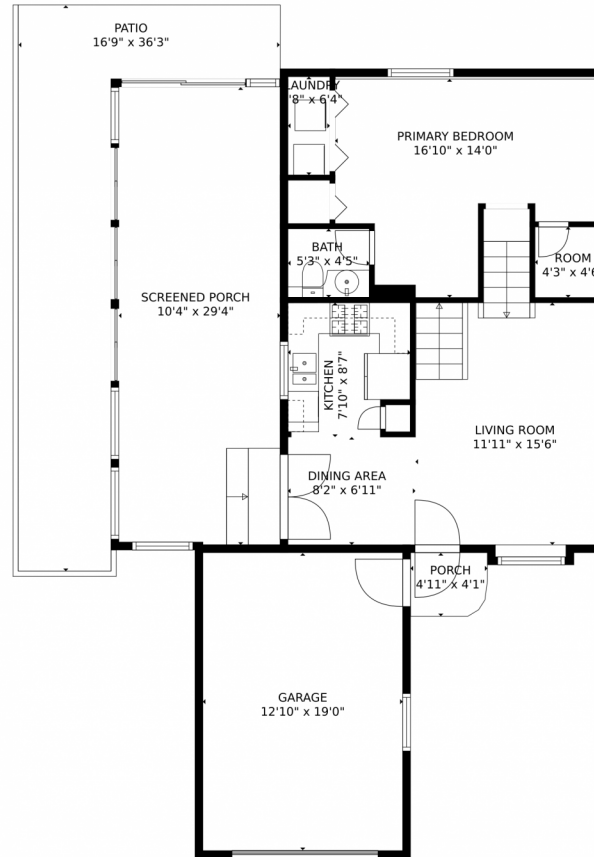
Located at 1380 Ride Lane in Colorado Springs, CO, this charming single-family home offers 2 bedrooms, 1 full bathroom, and 1 half bathroom. With a comfortable living space of 1,090 square feet, this property features a single-story design, an attached garage, and a lovely backyard with a patio area and wooden deck. The high ceilings, hardwood floors, and French doors add elegance and charm to the interior, while the mountain views from the deck provide a picturesque backdrop. Don't miss this opportunity to own a beautiful home in a peaceful community!



**Taylor Haas**  
 303-665-7368  
 taylorh@coloradorpm.com  
<https://www.coloradorpm.com/available-rental-properties-denver>



# 1380 Ride Lane, Colorado Springs, CO 80916 – Main Level



GROSS INTERNAL AREA  
FLOOR 1: 597 sq. ft., FLOOR 2: 382 sq. ft.  
EXCLUDED AREAS: GARAGE: 245 sq. ft., SCREENED PORCH: 303 sq. ft., PORCH: 19 sq. ft.,  
PATIO: 267 sq. ft., BALCONY: 75 sq. ft.  
TOTAL: 979 sq. ft.  
MEASUREMENTS CALCULATED BY V1Photos.COM ARE DEEMED HIGHLY RELIABLE BUT NOT GUARANTEED.

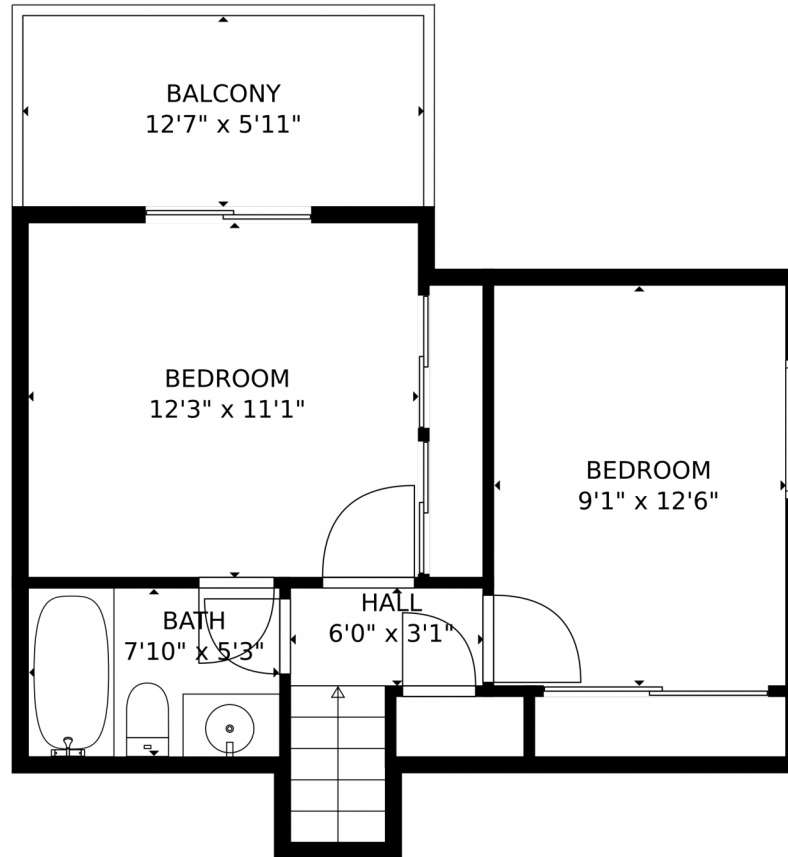
Disclaimer: Sizes and Dimensions are Approximate, Actual May Vary.



**Taylor Haas**  
303-665-7368  
taylorh@coloradorpm.com  
<https://www.coloradorpm.com/available-rental-properties-denver>



1380 Ride Lane, Colorado Springs, CO 80916 – Upper Level



GROSS INTERNAL AREA  
FLOOR 1: 597 sq. ft, FLOOR 2: 382 sq. ft  
EXCLUDED AREAS: GARAGE: 245 sq. ft, SCREENED PORCH: 303 sq. ft, PORCH: 19 sq. ft,  
PATIO: 267 sq. ft, BALCONY: 75 sq. ft  
TOTAL: 979 sq. ft  
MEASUREMENTS CALCULATED BY V1Photos.com ARE DEEMED HIGHLY RELIABLE BUT NOT GUARANTEED.



Disclaimer: Sizes and Dimensions are Approximate, Actual May Vary.



**Taylor Haas**  
303-665-7368  
taylorh@coloradorpm.com  
<https://www.coloradorpm.com/available-rental-properties-denver>



# 1380 Ride Lane, Colorado Springs, CO 80916 – All Levels



GROSS INTERNAL AREA  
FLOOR 1: 597 sq. ft, FLOOR 2: 382 sq. ft  
EXCLUDED AREAS: GARAGE: 245 sq. ft, SCREENED PORCH: 303 sq. ft, PORCH: 19 sq. ft,  
PATIO: 267 sq. ft, BALCONY: 75 sq. ft  
TOTAL: 979 sq. ft  
MEASUREMENTS CALCULATED BY V1Photos.com ARE DEEMED HIGHLY RELIABLE BUT NOT GUARANTEED.



Disclaimer: Sizes and Dimensions are Approximate, Actual May Vary.



**Taylor Haas**  
303-665-7368  
taylorh@coloradorpm.com  
<https://www.coloradorpm.com/available-rental-properties-denver>

