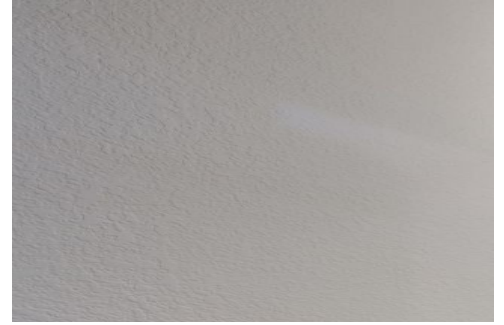




1222 Warrior Way
 Lafayette, CO 80026
 COMMUNITY: Lafayette Greens

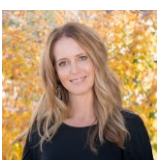
PRICE \$437,000



Townhouse 1276 SQFT 3 Beds 2/1 Baths 1 Car

PROPERTY DETAILS

Welcome to 1222 Warrior Way in Lafayette, CO! This beautiful townhouse offers 3 bedrooms, 2 full bathrooms, and 1 half bathroom, with a total of 1,276 square feet of living space. The property features a cozy living room with a fireplace, light carpet, and track lighting. The carpeted bedrooms are spacious and filled with natural light. The kitchen is equipped with brown cabinets, white appliances, track lighting, and light countertops. The property also includes a basement, a patio, and a yard with a lawn and fence. The attached garage provides convenient parking. Located in the Lafayette Greens community, this townhouse offers a great opportunity for comfortable living in a desirable neighborhood.



Terri Ellerington

303-929-8116

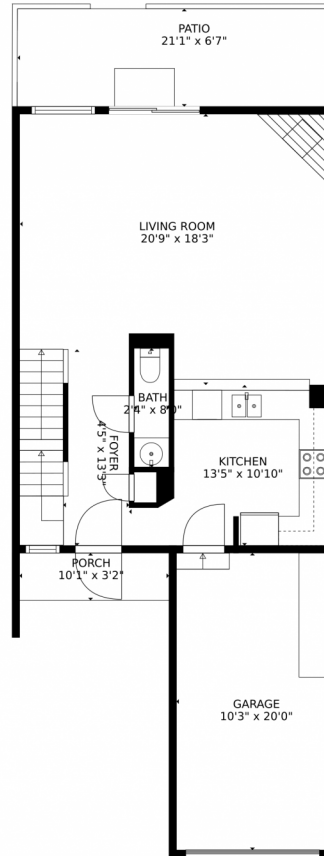
terri@elevated-team.com

<https://www.remax.com/real-estate-agents/terri-ellerington-louisville-co/10205130>

Scan code
 for more
 property
 details



1222 Warrior Way, Lafayette, CO 80026 – Main Floor



GROSS INTERNAL AREA
Below Ground: 0 sq. ft, FLOOR 2: 595 sq. ft, FLOOR 3: 571 sq. ft
EXCLUDED AREAS: UTILITY: 189 sq. ft, UNFINISHED BASEMENT: 412 sq. ft, GARAGE: 205 sq. ft,
PORCH: 33 sq. ft, PATIO: 139 sq. ft
TOTAL: 1166 sq. ft
MEASUREMENTS CALCULATED BY V1Photos.COM ARE DEEMED HIGHLY RELIABLE BUT NOT GUARANTEED.



Disclaimer: Sizes and Dimensions are Approximate, Actual May Vary.



Terri Ellerington

303-929-8116

terri@elevated-team.com

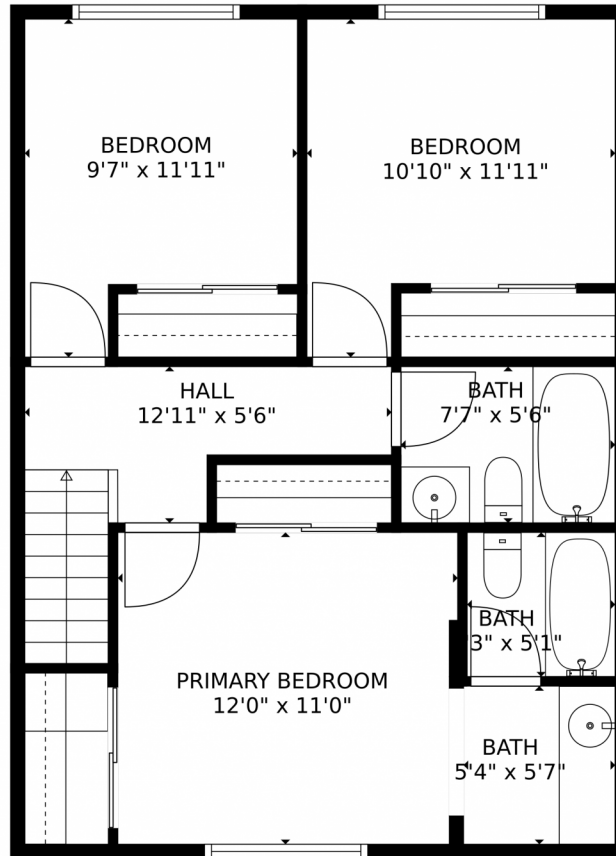
<https://www.remax.com/real-estate-agents/terri-ellerington-louisville-co/102051301>



Scan code
for more
property
details



1222 Warrior Way, Lafayette, CO 80026 – 2nd Floor



GROSS INTERNAL AREA
Below Ground: 0 sq. ft, FLOOR 2: 595 sq. ft, FLOOR 3: 571 sq. ft
EXCLUDED AREAS: UTILITY: 189 sq. ft, UNFINISHED BASEMENT: 412 sq. ft, GARAGE: 205 sq. ft,
PORCH: 33 sq. ft, PATIO: 139 sq. ft
TOTAL: 1166 sq. ft
MEASUREMENTS CALCULATED BY V1Photos.COM ARE DEEMED HIGHLY RELIABLE BUT NOT GUARANTEED.



Disclaimer: Sizes and Dimensions are Approximate, Actual May Vary.



Terri Ellerington

303-929-8116

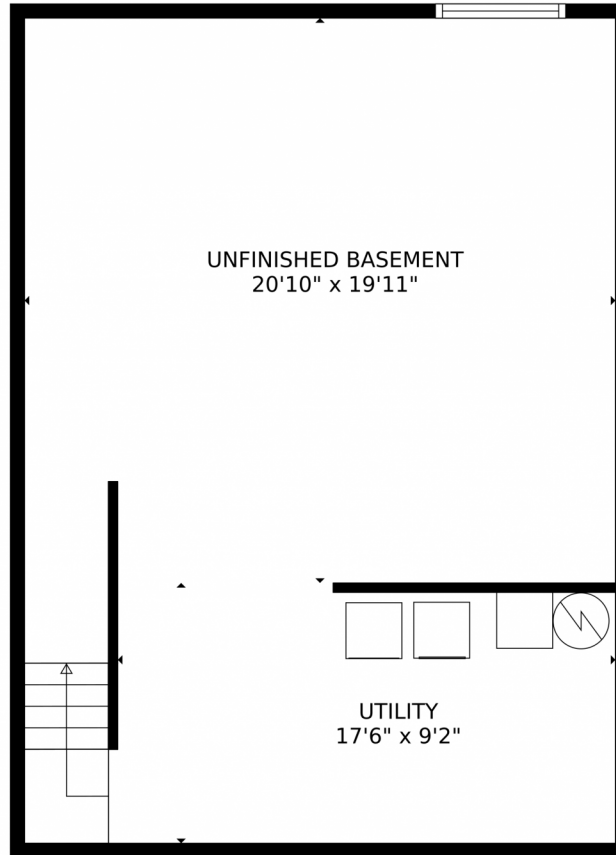
terri@elevated-team.com

<https://www.remax.com/real-estate-agents/terri-ellerington-louisville-co/102051301>



Scan code
for more
property
details





GROSS INTERNAL AREA
Below Ground: 0 sq. ft, FLOOR 2: 595 sq. ft, FLOOR 3: 571 sq. ft
EXCLUDED AREAS: UTILITY: 189 sq. ft, UNFINISHED BASEMENT: 412 sq. ft, GARAGE: 205 sq. ft,
PORCH: 33 sq. ft, PATIO: 139 sq. ft
TOTAL: 1166 sq. ft
MEASUREMENTS CALCULATED BY V1Photos.com ARE DEEMED HIGHLY RELIABLE BUT NOT GUARANTEED.



Disclaimer: Sizes and Dimensions are Approximate, Actual May Vary.



Terri Ellerington

303-929-8116

terri@elevated-team.com

<https://www.remax.com/real-estate-agents/terri-ellerington-louisville-co/102051301>



Scan code
for more
property
details



1222 Warrior Way, Lafayette, CO 80026 – All Floors



GROSS INTERNAL AREA
Below Ground: 0 sq. ft, FLOOR 2: 595 sq. ft, FLOOR 3: 571 sq. ft
EXCLUDED AREAS: UTILITY: 189 sq. ft, UNFINISHED BASEMENT: 412 sq. ft, GARAGE: 205 sq. ft,
PORCH: 33 sq. ft, PATIO: 139 sq. ft
TOTAL: 1166 sq. ft
MEASUREMENTS CALCULATED BY V1Photos.COM ARE DEEMED HIGHLY RELIABLE BUT NOT GUARANTEED.



Disclaimer: Sizes and Dimensions are Approximate, Actual May Vary.



Terri Ellerington
303-929-8116
terri@elevated-team.com
<https://www.remax.com/real-estate-agents/terri-ellerington-louisville-co/102051301>



Scan code
for more
property
details

