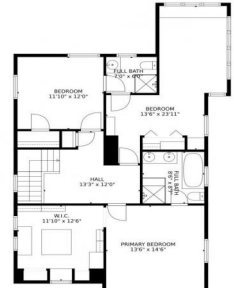




Upper Level



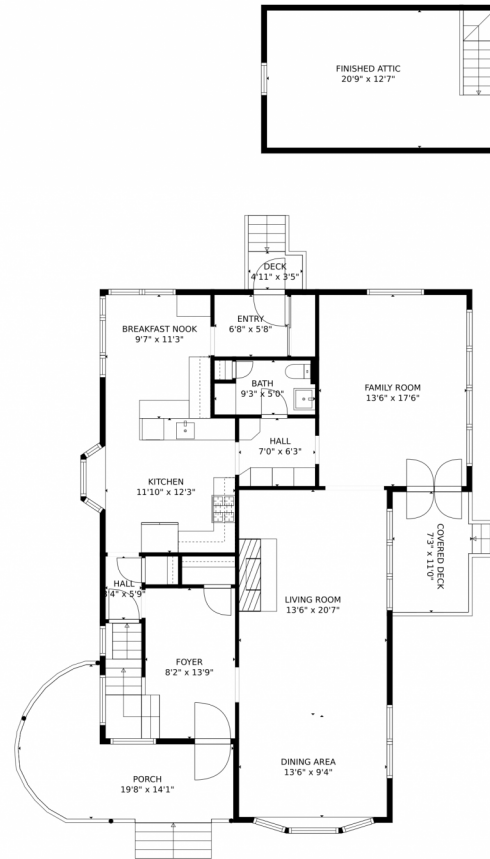
Single Family
 3447 SQFT
 3 Beds
 2/1 Baths
 1 Car
 0.2 Acre



Michelle Blessing
719-649-4200
mblessing@erashields.com



1729 Wood Avenue, Colorado Springs, CO 80907 – Main Level



GROSS INTERNAL AREA
Below Ground: 483 sq. ft, FLOOR 2: 0 sq. ft, FLOOR 3: 1543 sq. ft, FLOOR 4: 1081 sq. ft
EXCLUDED AREAS: STORAGE: 147 sq. ft, GARAGE: 286 sq. ft, PATIO: 564 sq. ft,
COVERED DECK: 77 sq. ft, DECK: 17 sq. ft, PORCH: 169 sq. ft
TOTAL: 3107 sq. ft
MEASUREMENTS CALCULATED BY V1Photos.COM ARE DEEMED HIGHLY RELIABLE BUT NOT GUARANTEED.



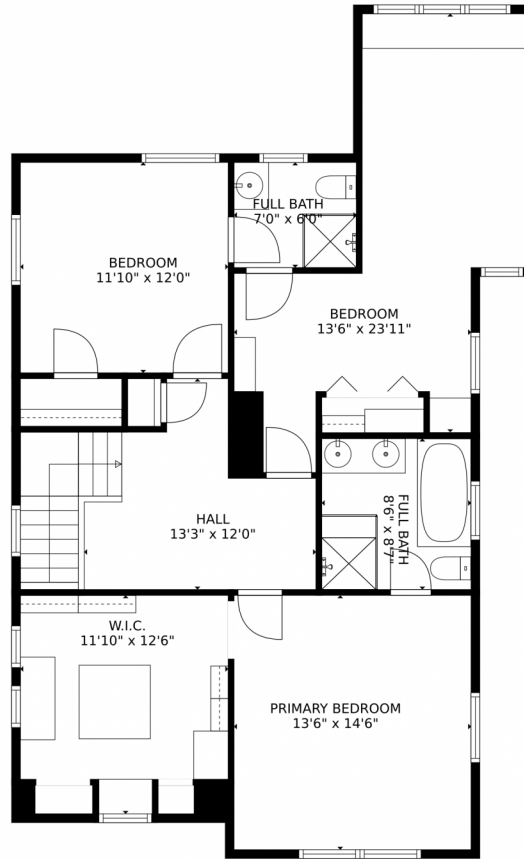
Disclaimer: Sizes and Dimensions are Approximate, Actual May Vary.



Michelle Blessing
719-649-4200
mblessing@erashields.com



1729 Wood Avenue, Colorado Springs, CO 80907 – Upper Level



GROSS INTERNAL AREA
Below Ground: 483 sq. ft, FLOOR 2: 0 sq. ft, FLOOR 3: 1543 sq. ft, FLOOR 4: 1081 sq. ft
EXCLUDED AREAS: STORAGE: 147 sq. ft, GARAGE: 286 sq. ft, PATIO: 564 sq. ft,
COVERED DECK: 77 sq. ft, DECK: 17 sq. ft, PORCH: 169 sq. ft
TOTAL: 3107 sq. ft
MEASUREMENTS CALCULATED BY V1Photos.COM ARE DEEMED HIGHLY RELIABLE BUT NOT GUARANTEED.



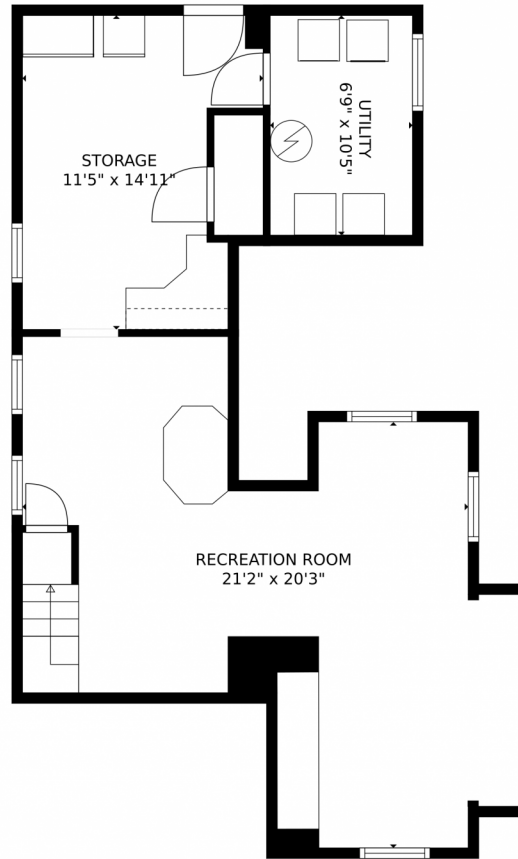
Disclaimer: Sizes and Dimensions are Approximate, Actual May Vary.



Michelle Blessing
719-649-4200
mblessing@erashields.com



1729 Wood Avenue, Colorado Springs, CO 80907 – Lower Level



GROSS INTERNAL AREA
Below Ground: 483 sq. ft, FLOOR 2: 0 sq. ft, FLOOR 3: 1543 sq. ft, FLOOR 4: 1081 sq. ft
EXCLUDED AREAS: STORAGE: 147 sq. ft, GARAGE: 286 sq. ft, PATIO: 564 sq. ft,
COVERED DECK: 77 sq. ft, DECK: 17 sq. ft, PORCH: 169 sq. ft
TOTAL: 3107 sq. ft
MEASUREMENTS CALCULATED BY V1Photos.com ARE DEEMED HIGHLY RELIABLE BUT NOT GUARANTEED.



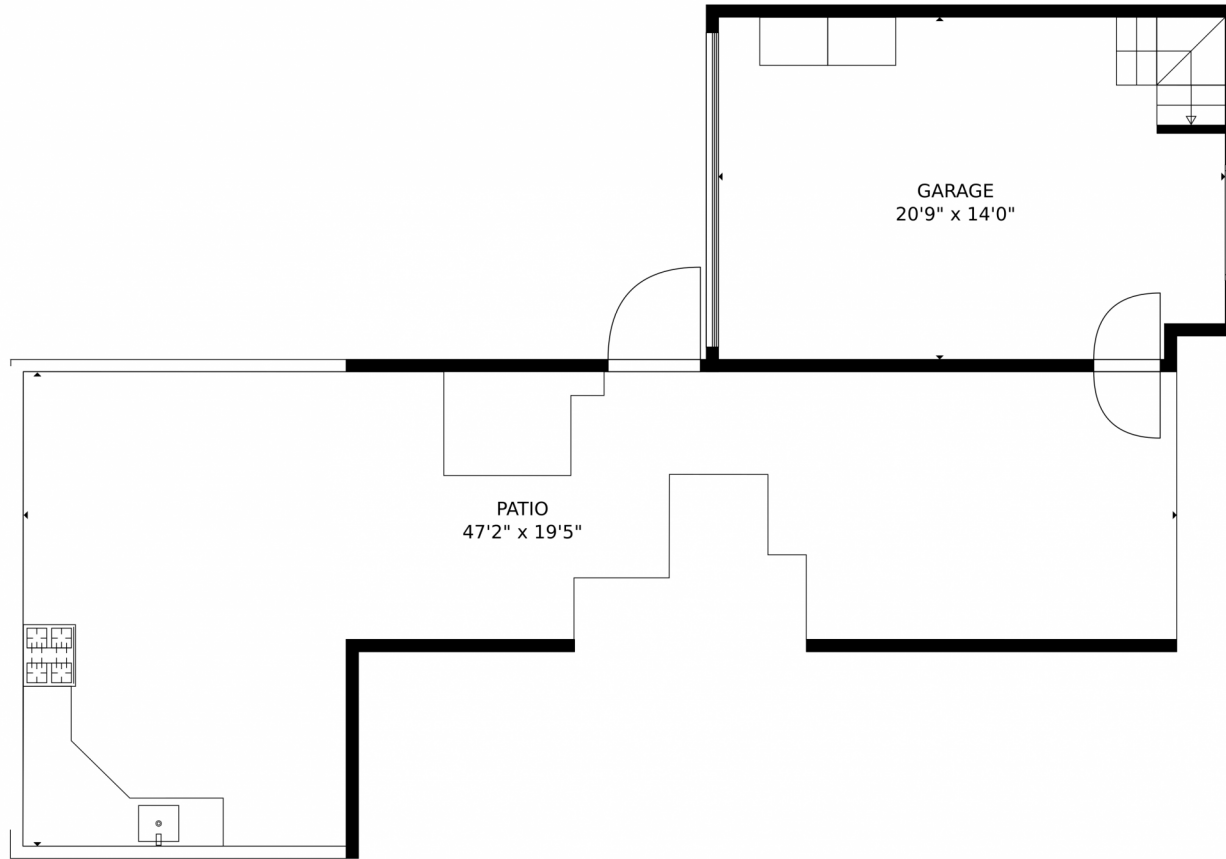
Disclaimer: Sizes and Dimensions are Approximate, Actual May Vary.



Michelle Blessing
719-649-4200
mblessing@erashields.com



1729 Wood Avenue, Colorado Springs, CO 80907 – Garage



GROSS INTERNAL AREA
Below Ground: 483 sq. ft, FLOOR 2: 0 sq. ft, FLOOR 3: 1543 sq. ft, FLOOR 4: 1081 sq. ft
EXCLUDED AREAS: STORAGE: 147 sq. ft, GARAGE: 286 sq. ft, PATIO: 564 sq. ft,
COVERED DECK: 77 sq. ft, DECK: 17 sq. ft, PORCH: 169 sq. ft
TOTAL: 3107 sq. ft
MEASUREMENTS CALCULATED BY V1Photos.COM ARE DEEMED HIGHLY RELIABLE BUT NOT GUARANTEED.



Disclaimer: Sizes and Dimensions are Approximate, Actual May Vary.



Michelle Blessing
719-649-4200
mblessing@erashields.com



Scan code
for more
property
details

1729 Wood Avenue, Colorado Springs, CO 80907 – All Levels



GROSS INTERNAL AREA
 Below Ground: 483 sq. ft, FLOOR 2: 0 sq. ft, FLOOR 3: 1543 sq. ft, FLOOR 4: 1081 sq. ft
 EXCLUDED AREAS: STORAGE: 147 sq. ft, GARAGE: 286 sq. ft, PATIO: 564 sq. ft,
 COVERED DECK: 77 sq. ft, DECK: 17 sq. ft, PORCH: 169 sq. ft
 TOTAL: 3107 sq. ft
 MEASUREMENTS CALCULATED BY V1Photos.COM ARE DEEMED HIGHLY RELIABLE BUT NOT GUARANTEED.



Disclaimer: Sizes and Dimensions are Approximate, Actual May Vary.



Michelle Blessing
 719-649-4200
 mblessing@erashields.com

