





 Single Family

 2490 SQFT

 5 Beds

 3 Baths

 2 Car

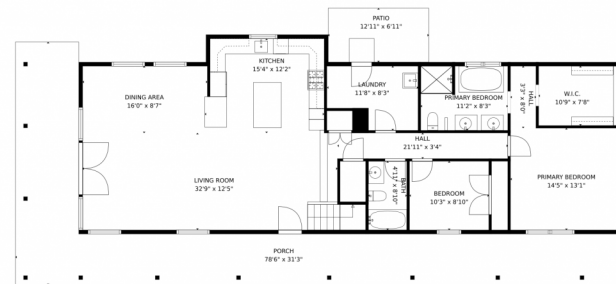
 8.37 Acre



**Rondi DuPont**  
970-401-0123  
rdupont@windermere.com



# 12245 N County Road 17, Fort Collins, CO 80524 – Main Levels



GROSS INTERNAL AREA  
FLOOR 1: 2818 sq. ft, FLOOR 2: 1455 sq. ft  
EXCLUDED AREAS: STABLE: 768 sq. ft, GARAGE: 647 sq. ft, PORCH: 1180 sq. ft,  
PATIO: 90 sq. ft, OPEN TO BELOW: 30 sq. ft  
TOTAL: 4273 sq. ft  
MEASUREMENTS CALCULATED BY V1Photos.COM ARE DEEMED HIGHLY RELIABLE BUT NOT GUARANTEED.



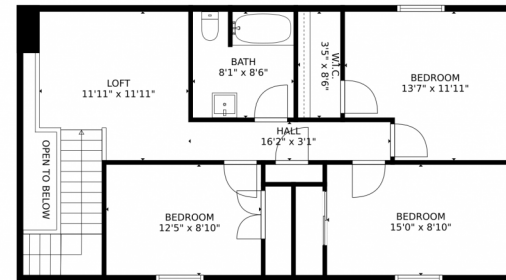
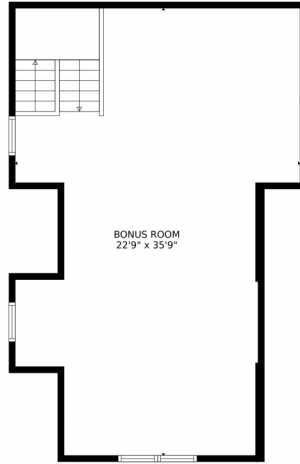
Disclaimer: Sizes and Dimensions are Approximate, Actual May Vary.



Rondi DuPont  
970-401-0123  
rdupont@windermere.com



# 12245 N County Road 17, Fort Collins, CO 80524 – Upper Levels



GROSS INTERNAL AREA  
FLOOR 1: 2818 sq. ft, FLOOR 2: 1455 sq. ft  
EXCLUDED AREAS: STABLE: 768 sq. ft, GARAGE: 647 sq. ft, PORCH: 1180 sq. ft,  
PATIO: 90 sq. ft, OPEN TO BELOW: 30 sq. ft  
TOTAL: 4273 sq. ft  
MEASUREMENTS CALCULATED BY V1Photos.COM ARE DEEMED HIGHLY RELIABLE BUT NOT GUARANTEED.



Disclaimer: Sizes and Dimensions are Approximate, Actual May Vary.



Rondi DuPont  
970-401-0123  
rdupont@windermere.com



# 12245 N County Road 17, Fort Collins, CO 80524 — All Levels



GROSS INTERNAL AREA  
FLOOR 1: 2818 sq. ft, FLOOR 2: 1455 sq. ft  
EXCLUDED AREAS: STABLE: 768 sq. ft, GARAGE: 647 sq. ft, PORCH: 1180 sq. ft,  
PATIO: 90 sq. ft, OPEN TO BELOW: 30 sq. ft  
TOTAL: 4273 sq. ft  
MEASUREMENTS CALCULATED BY V1Photos.COM ARE DEEMED HIGHLY RELIABLE BUT NOT GUARANTEED.



Disclaimer: Sizes and Dimensions are Approximate, Actual May Vary.



Rondi DuPont  
970-401-0123  
rdupont@windermere.com

