


 Multi Family

 1692 SQFT

 4 Beds

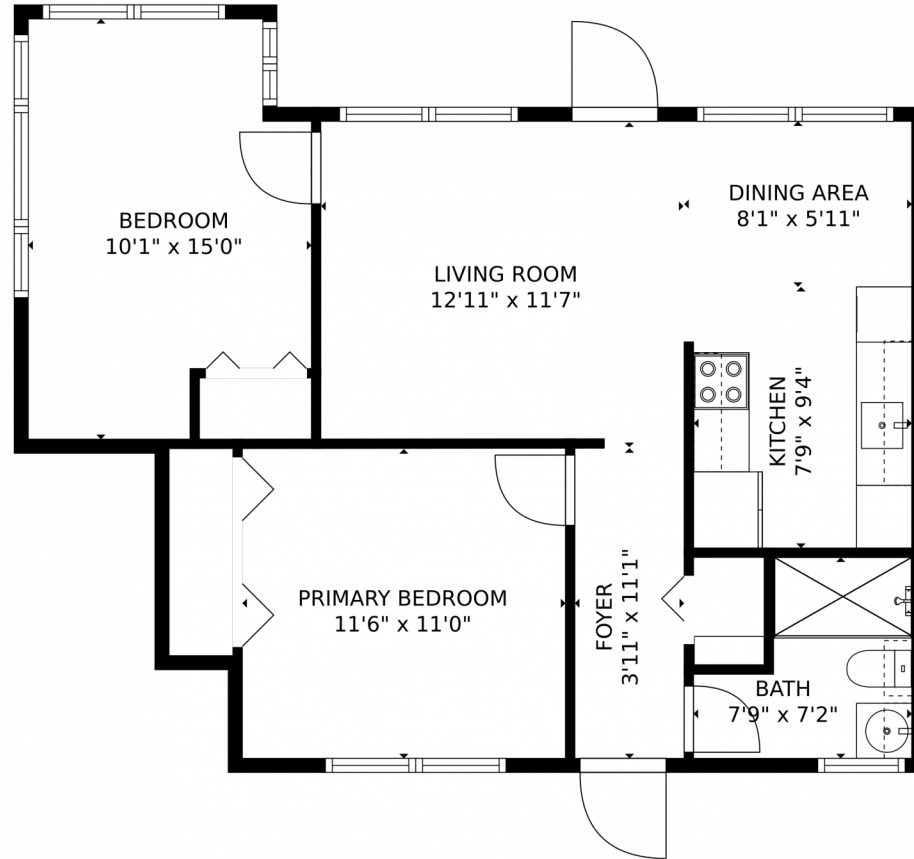
 3 Baths



Christopher Hall
954-707-1307
christopherhall@keyes.com



1120 Southwest 30th Street, Fort Lauderdale, FL 33315 – Unit B Main Floor



GROSS INTERNAL AREA
FLOOR 1: 657 sq. ft
TOTAL: 657 sq. ft

MEASUREMENTS CALCULATED BY V1Photos.com ARE DEEMED HIGHLY RELIABLE BUT NOT GUARANTEED.



Disclaimer: Sizes and Dimensions are Approximate, Actual May Vary.



Christopher Hall
954-707-1307
christopherhall@keyes.com

