




738 South Grape Street
Denver, CO 80246



 Single Family  2585 SQFT

PROPERTY DETAILS

Welcome to this stunning single-family home located at 738 South Grape Street in Denver, CO 80246. With a spacious living area of 2585 sqft, this property offers ample room for all your needs. The charming ranch-style design and desirable community create a welcoming and peaceful environment.

Step inside and be greeted by a beautiful hardwood floored living room with baseboard heating and a fireplace. The kitchen is equally impressive, featuring light hardwood flooring, pendant lighting, and stainless steel appliances. The bedrooms are spacious and feature light parquet floors, providing a comfortable and serene retreat.

The property also offers a front lawn and a patio area, perfect for outdoor activities and gatherings. Additional features include a corridor with light hardwood floors, an empty room with light parquet floors, and a basement with light carpet and a textured ceiling. The yard is beautifully landscaped, offering a serene space for relaxation and enjoyment.

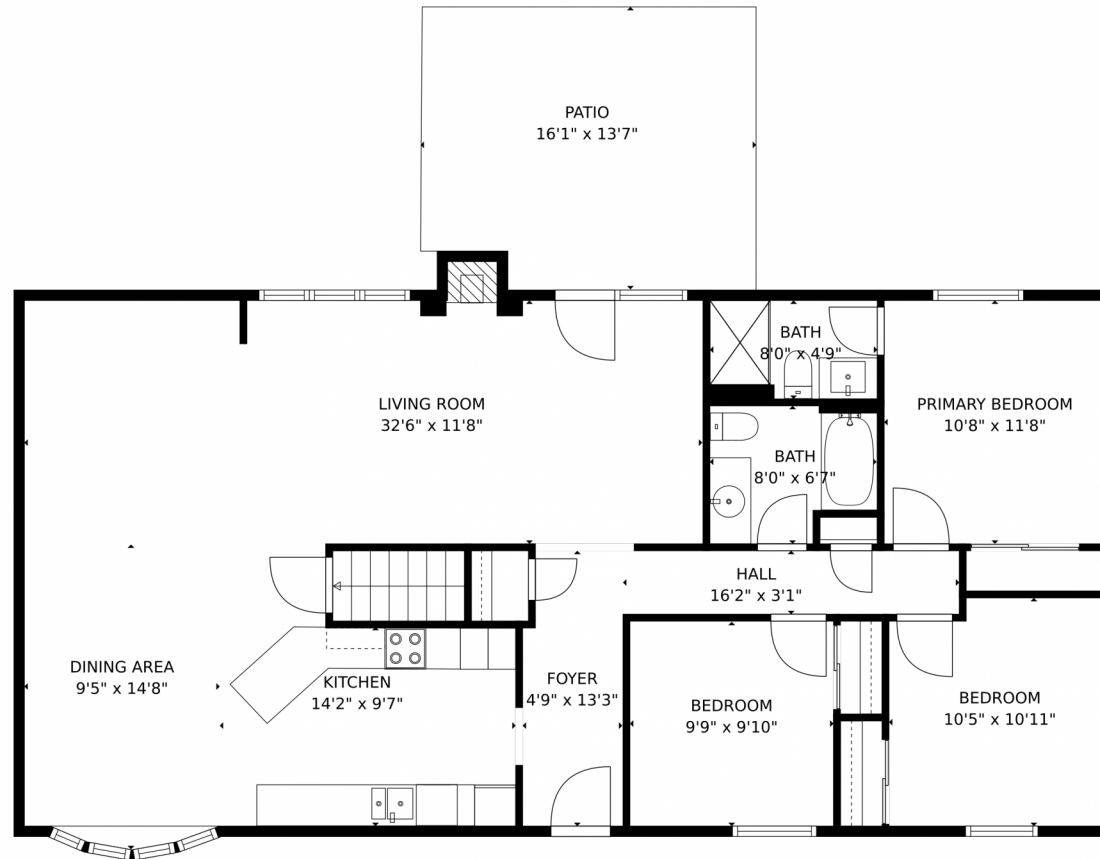
Don't miss out on the opportunity to make this house your dream home. Schedule a viewing today!



Jaden Combs
303-324-1437
jaden@kentwood.com



738 South Grape Street, Denver, CO 80246 – Main Level



GROSS INTERNAL AREA
Below Ground: 710 sq. ft, FLOOR 2: 1234 sq. ft
EXCLUDED AREAS: UNDEFINED: 87 sq. ft, UTILITY: 221 sq. ft, PATIO: 211 sq. ft
TOTAL: 1944 sq. ft
MEASUREMENTS CALCULATED BY V1Photos.com ARE DEEMED HIGHLY RELIABLE BUT NOT GUARANTEED.



Disclaimer: Sizes and Dimensions are Approximate, Actual May Vary.



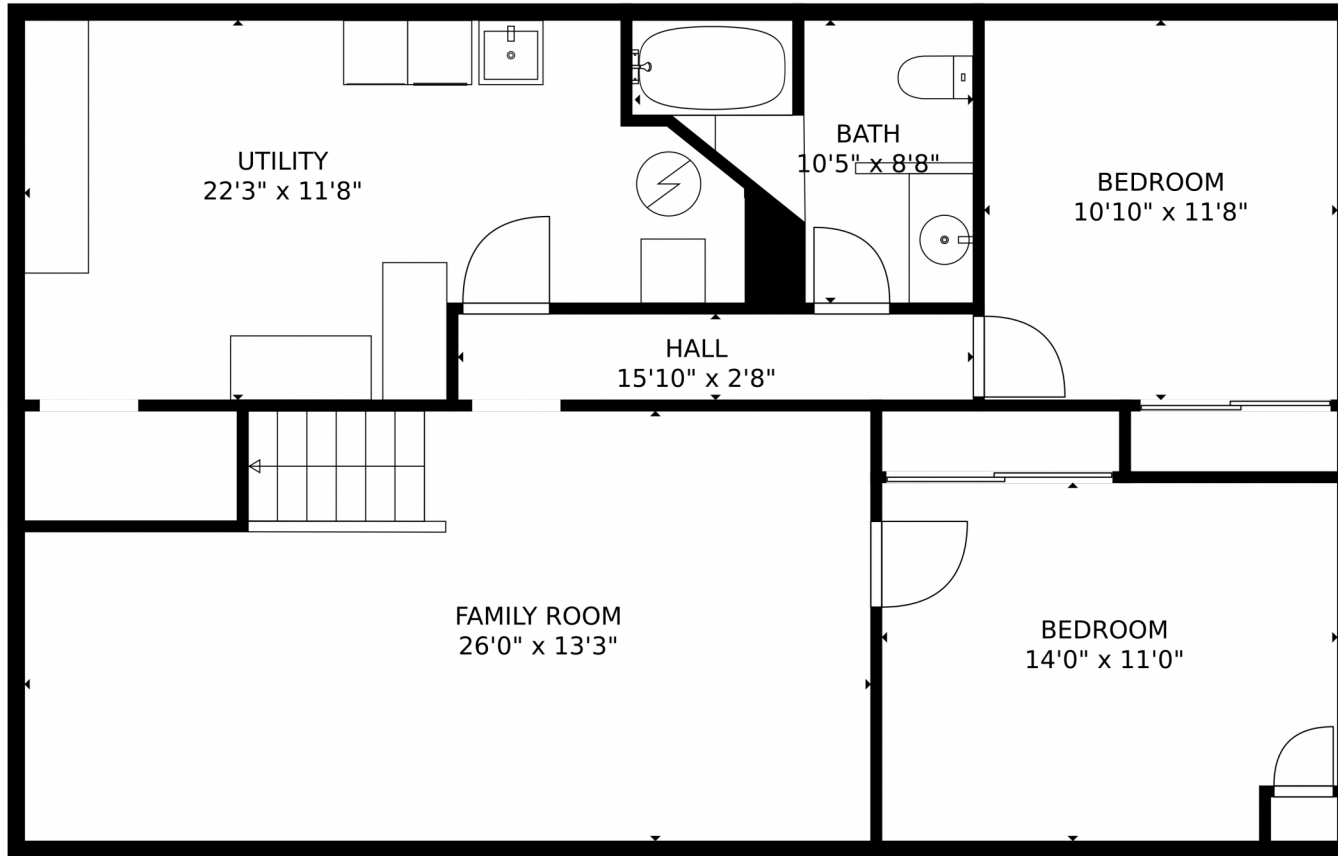
Jaden Combs
303-324-1437
jaden@kentwood.com



Scan code for more property details



738 South Grape Street, Denver, CO 80246 – Lower Level



GROSS INTERNAL AREA
Below Ground: 710 sq. ft, FLOOR 2: 1234 sq. ft
EXCLUDED AREAS: UNDEFINED: 87 sq. ft, UTILITY: 221 sq. ft, PATIO: 211 sq. ft
TOTAL: 1944 sq. ft
MEASUREMENTS CALCULATED BY V1Photos.com ARE DEEMED HIGHLY RELIABLE BUT NOT GUARANTEED.

Disclaimer: Sizes and Dimensions are Approximate, Actual May Vary.

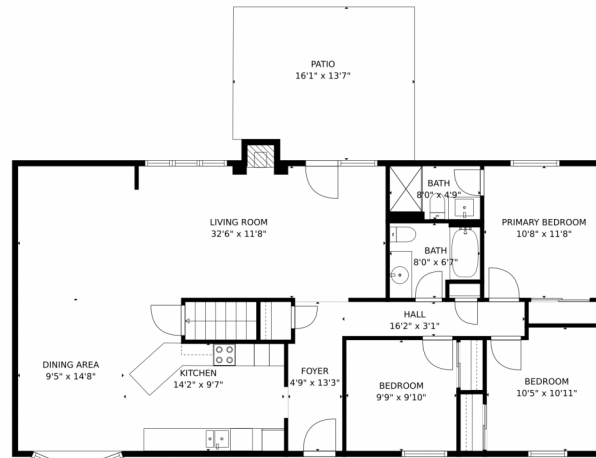


Jaden Combs
303-324-1437
jaden@kentwood.com

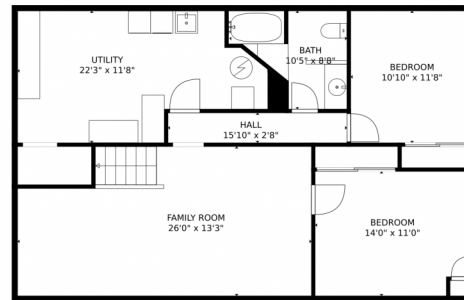


Scan code
for more
property
details

738 South Grape Street, Denver, CO 80246 – All Levels



FLOOR 2



FLOOR 1

GROSS INTERNAL AREA
Below Ground: 710 sq. ft, FLOOR 2: 1234 sq. ft
EXCLUDED AREAS: UNDEFINED: 87 sq. ft, UTILITY: 221 sq. ft, PATIO: 211 sq. ft
TOTAL: 1944 sq. ft
MEASUREMENTS CALCULATED BY V1Photos.com ARE DEEMED HIGHLY RELIABLE BUT NOT GUARANTEED.



Disclaimer: Sizes and Dimensions are Approximate, Actual May Vary.



Jaden Combs
303-324-1437
jaden@kentwood.com

