

18553 County Road 5  
Berthoud, CO 80513



Single Family 3370 SQFT 4 Beds 3 Baths 0.86 Acre

## PROPERTY DETAILS

Welcome to your dream home in Berthoud, CO! This stunning single-family property offers 4 bedrooms, 3 full bathrooms, and a spacious living area of 3,370 sqft. With a beautiful view of the terrace, complete with a porch and a water view, this home is perfect for those who love to enjoy the outdoors.

Inside, you'll find a well-designed living room with light hardwood flooring and a vaulted ceiling, creating a bright and open atmosphere. The kitchen is equipped with stainless steel appliances, brown cabinets, and light countertops, making it a chef's dream. The bedrooms are beautifully designed, with hardwood floors and ceiling fans for added comfort.

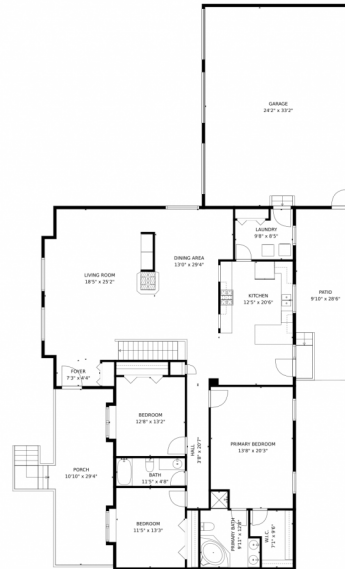
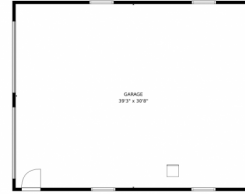
Located in a desirable community with stunning mountain views, this property offers the perfect combination of luxury and tranquility. Don't miss out on the opportunity to make this your dream home!



**Jorge Armstrong**  
720-233-7091  
jorge.armstrong@kw.com  
<https://www.milehighcityliving.com/>



# 18553 County Road 5, Berthoud, CO 80513 – Main Level



GROSS INTERNAL AREA  
Below Ground: 1020 sq. ft, FLOOR 2: 2105 sq. ft  
EXCLUDED AREAS: ELECTRICAL ROOM: 102 sq. ft, PATIO: 1020 sq. ft, GARAGE: 2017 sq. ft,  
PORCH: 271 sq. ft  
TOTAL: 3125 sq. ft  
MEASUREMENTS CALCULATED BY V1Photos.COM ARE DEEMED HIGHLY RELIABLE BUT NOT GUARANTEED.



Disclaimer: Sizes and Dimensions are Approximate, Actual May Vary.



**Jorge Armstrong**

720-233-7091

[jorge.armstrong@kw.com](mailto:jorge.armstrong@kw.com)

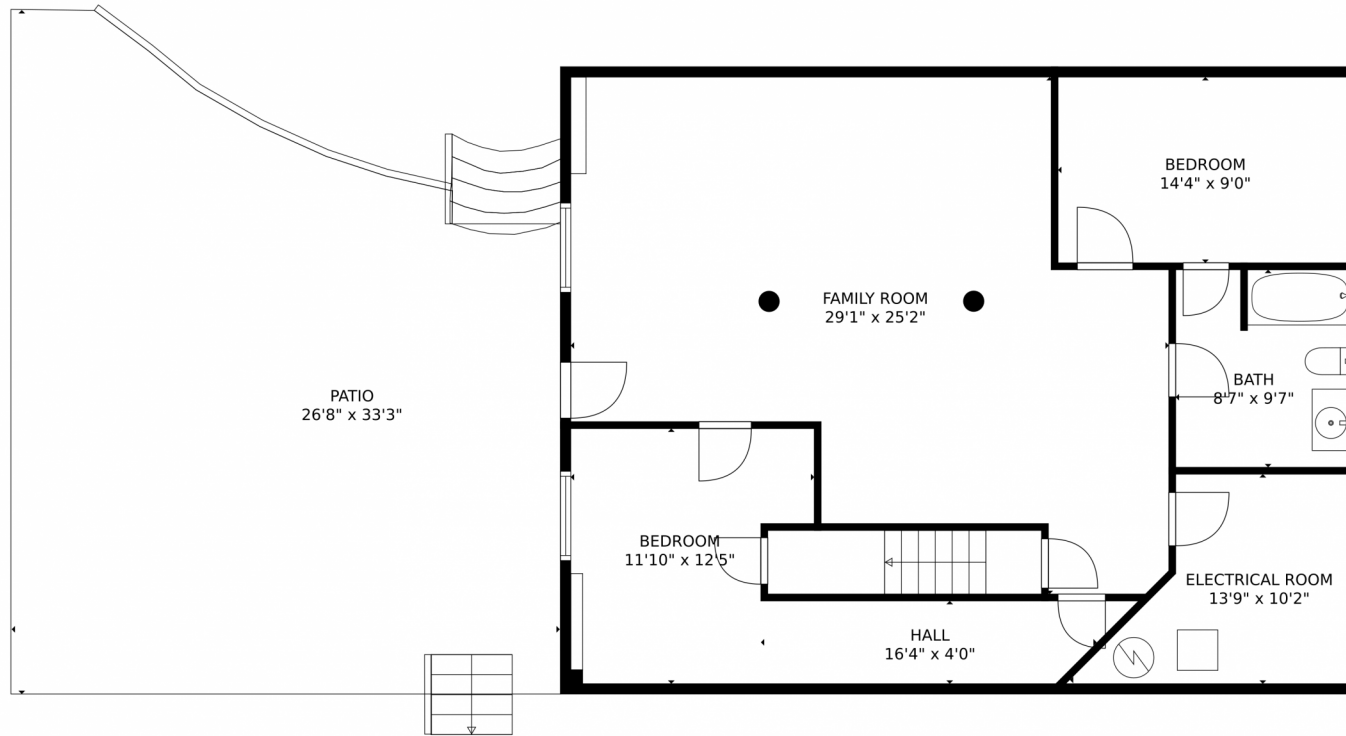
<https://www.milehighcityliving.com/>



Scan code  
for more  
property  
details



# 18553 County Road 5, Berthoud, CO 80513 – Lower Level



GROSS INTERNAL AREA  
Below Ground: 1020 sq. ft, FLOOR 2: 2105 sq. ft  
EXCLUDED AREAS: ELECTRICAL ROOM: 102 sq. ft, PATIO: 1020 sq. ft, GARAGE: 2017 sq. ft,  
PORCH: 271 sq. ft  
TOTAL: 3125 sq. ft  
MEASUREMENTS CALCULATED BY V1Photos.COM ARE DEEMED HIGHLY RELIABLE BUT NOT GUARANTEED.

Disclaimer: Sizes and Dimensions are Approximate, Actual May Vary.



**Jorge Armstrong**

720-233-7091

jorge.armstrong@kw.com

<https://www.milehighcityliving.com/>



Scan code  
for more  
property  
details





