



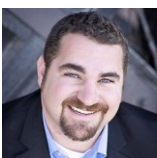
1001 43rd Ave #13
 Greeley, CO 80634
 COMMUNITY: Country Club Maples



Single Family 1453 SQFT 3 Beds 1 Baths 2 Car 0.11 Acre

PROPERTY DETAILS

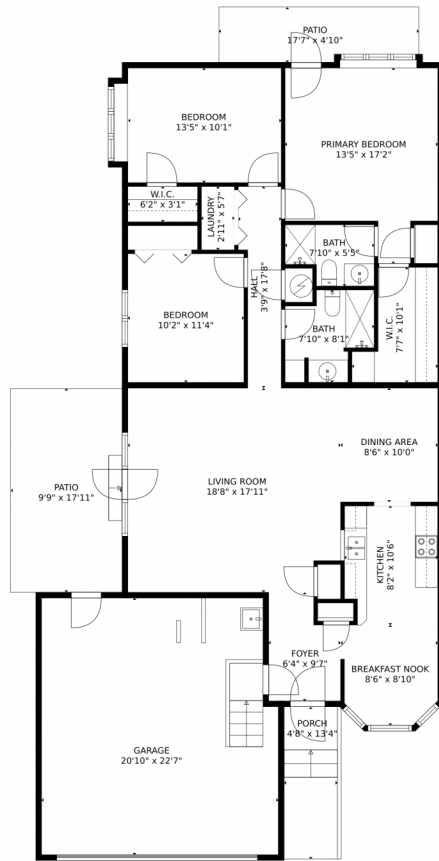
Welcome to this lovely property located in the Country Club Maples community of Greeley, CO. This charming Single Family home offers 3 bedrooms, 1 full bathroom, and a spacious 1453 sqft of living space. The property features a 2-car garage, exterior entry with a porch, sunroom/solarium, kitchen with light parquet floors and brown cabinets, spacious yard with a patio area and French doors, and a well-maintained lawn. Don't miss out on this wonderful opportunity to make this property your new home!



Brad Inhulsen
 970-584-4144
 brad@searsrealestate.com



1001 43rd Ave #13, Greeley, CO 80634 – Floor Plan



GROSS INTERNAL AREA
FLOOR 1: 1374 sq. ft
EXCLUDED AREAS: GARAGE: 456 sq. ft, PORCH: 63 sq. ft, PATIO: 256 sq. ft
TOTAL: 1374 sq. ft
MEASUREMENTS CALCULATED BY V1Photos.COM ARE DEEMED HIGHLY RELIABLE BUT NOT GUARANTEED.



Disclaimer: Sizes and Dimensions are Approximate, Actual May Vary.



Brad Inhulsen
970-584-4144
brad@searsrealestate.com

