




 Single Family

 976 SQFT

 2 Beds

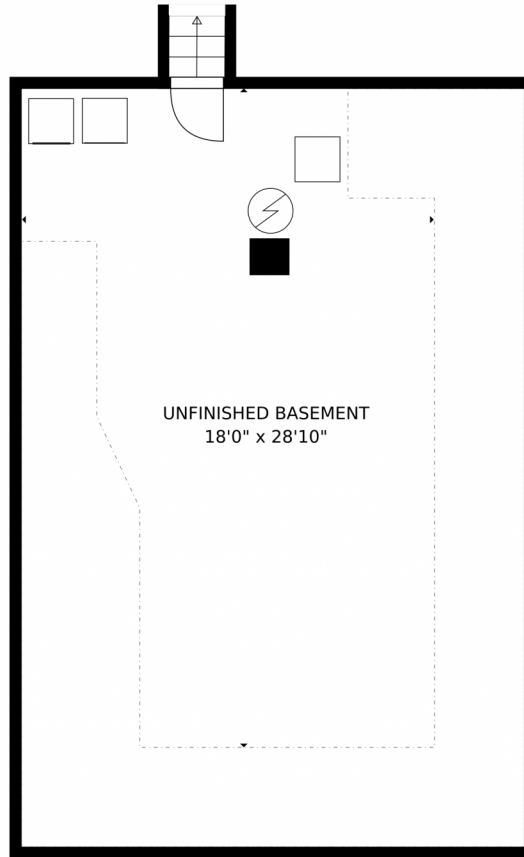
 1 Baths



**Taylor Haas**  
303-665-7368  
taylorh@coloradorpm.com  
<https://www.coloradorpm.com/available-rental-properties-denver>



923 East Saint Vrain Street, Colorado Springs, CO 80903 – Lower Level



GROSS INTERNAL AREA  
Below Ground: 8 sq. ft, FLOOR 2: 957 sq. ft  
EXCLUDED AREAS: CRAWL SPACE: 325 sq. ft, UNFINISHED BASEMENT: 407 sq. ft, PORCH: 131 sq. ft  
TOTAL: 965 sq. ft  
MEASUREMENTS CALCULATED BY V1Photos.com ARE DEEMED HIGHLY RELIABLE BUT NOT GUARANTEED.



Disclaimer: Sizes and Dimensions are Approximate, Actual May Vary.



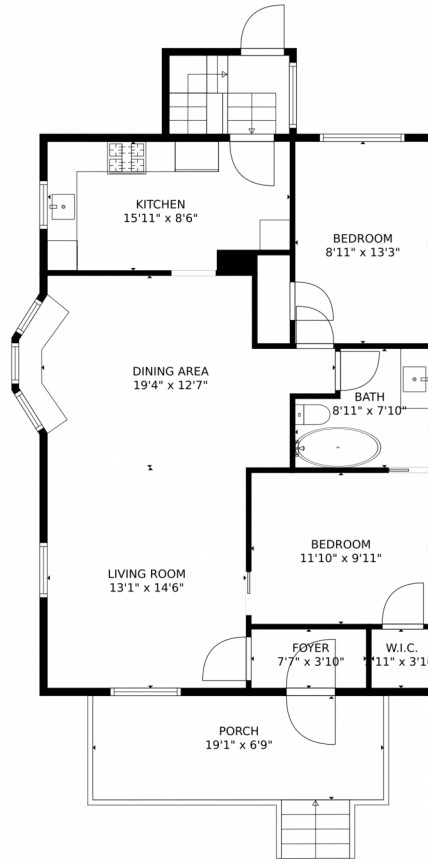
**Taylor Haas**  
303-665-7368  
taylorh@coloradorpm.com  
<https://www.coloradorpm.com/available-rental-properties-denver>



Scan code  
for more  
property  
details



# 923 East Saint Vrain Street, Colorado Springs, CO 80903 – Main Level



GROSS INTERNAL AREA  
Below Ground: 8 sq. ft, FLOOR 2: 957 sq. ft  
EXCLUDED AREAS: CRAWL SPACE: 325 sq. ft, UNFINISHED BASEMENT: 407 sq. ft, PORCH: 131 sq. ft  
TOTAL: 965 sq. ft  
MEASUREMENTS CALCULATED BY V1Photos.com ARE DEEMED HIGHLY RELIABLE BUT NOT GUARANTEED.



Disclaimer: Sizes and Dimensions are Approximate, Actual May Vary.



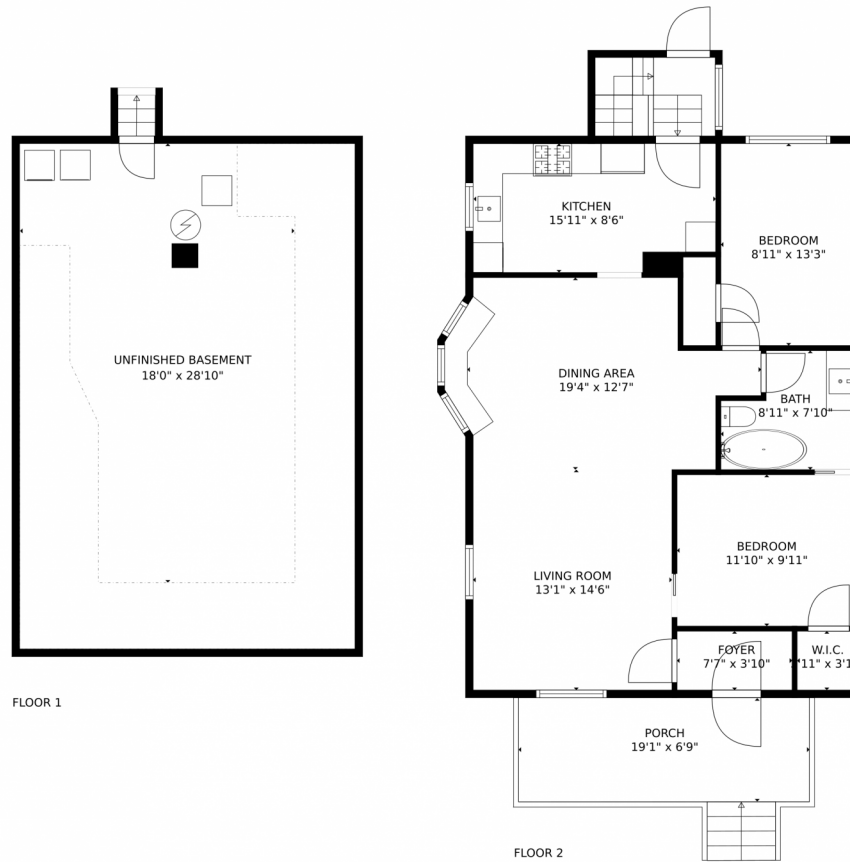
**Taylor Haas**  
303-665-7368  
taylorh@coloradorpm.com  
<https://www.coloradorpm.com/available-rental-properties-denver>



Scan code  
for more  
property  
details



# 923 East Saint Vrain Street, Colorado Springs, CO 80903 – All Levels



GROSS INTERNAL AREA  
Below Ground: 8 sq. ft, FLOOR 2: 957 sq. ft  
EXCLUDED AREAS: CRAWL SPACE: 325 sq. ft, UNFINISHED BASEMENT: 407 sq. ft, PORCH: 131 sq. ft  
TOTAL: 965 sq. ft  
MEASUREMENTS CALCULATED BY V1Photos.com ARE DEEMED HIGHLY RELIABLE BUT NOT GUARANTEED.



Disclaimer: Sizes and Dimensions are Approximate, Actual May Vary.



**Taylor Haas**  
303-665-7368  
taylorh@coloradorpm.com  
<https://www.coloradorpm.com/available-rental-properties-denver>



Scan code  
for more  
property  
details

