




 Single Family

 2202 SQFT

 5 Beds

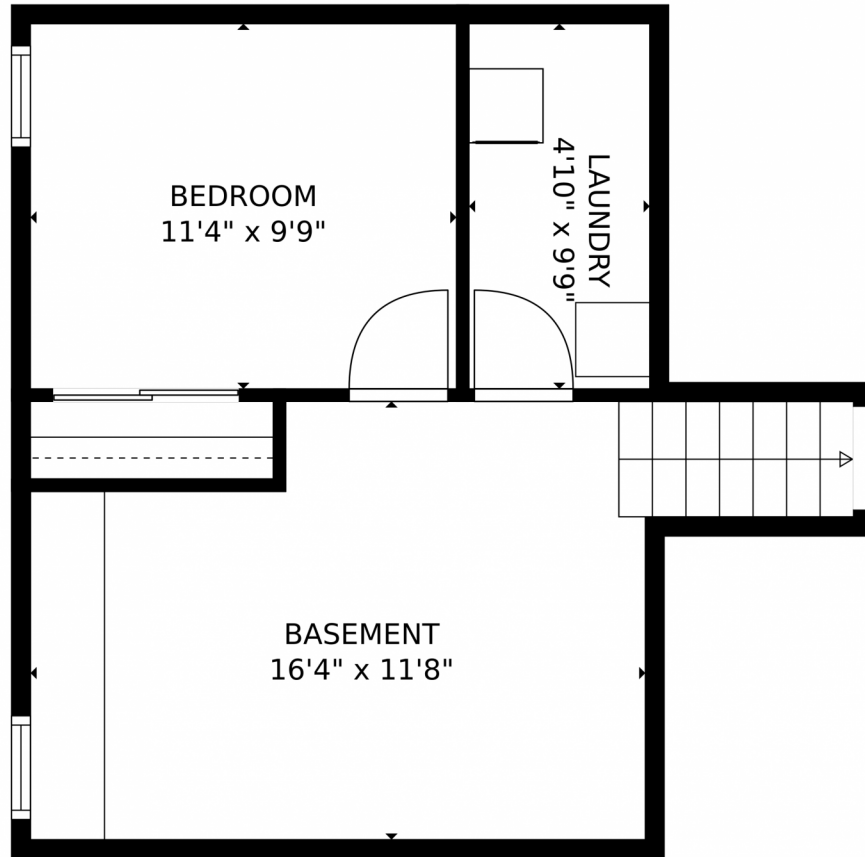
 2/1 Baths



**Taylor Haas**  
303-665-7368  
taylorh@coloradorpm.com  
<https://www.coloradorpm.com/available-rental-properties-denver>



3682 South Mobile Way, Aurora, CO 80013 – Lower Level



GROSS INTERNAL AREA  
Below Ground: 362 sq. ft. Below Ground: 417 sq. ft. FLOOR 3: 784 sq. ft. FLOOR 4: 417 sq. ft.  
EXCLUDED AREAS: GARAGE: 414 sq. ft. PATIO: 211 sq. ft. PORCH: 115 sq. ft.  
FIREPLACE: 8 sq. ft.  
TOTAL: 1980 sq. ft.  
MEASUREMENTS CALCULATED BY V1Photos.com ARE DEEMED HIGHLY RELIABLE BUT NOT GUARANTEED.



Disclaimer: Sizes and Dimensions are Approximate, Actual May Vary.

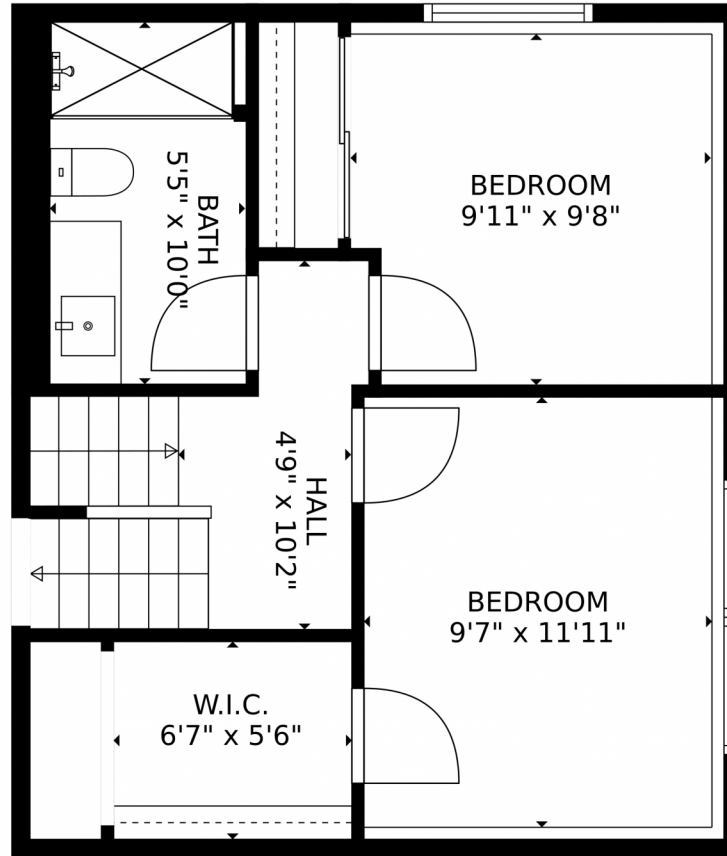


**Taylor Haas**  
303-665-7368  
taylorh@coloradorpm.com  
<https://www.coloradorpm.com/available-rental-properties-denver>



Scan code  
for more  
property  
details





GROSS INTERNAL AREA  
Below Ground: 362 sq. ft. Below Ground: 417 sq. ft. FLOOR 3: 784 sq. ft. FLOOR 4: 417 sq. ft.  
EXCLUDED AREAS: GARAGE: 414 sq. ft. PATIO: 211 sq. ft. PORCH: 115 sq. ft.  
FIREPLACE: 8 sq. ft.  
TOTAL: 1980 sq. ft.  
MEASUREMENTS CALCULATED BY V1Photos.COM ARE DEEMED HIGHLY RELIABLE BUT NOT GUARANTEED.

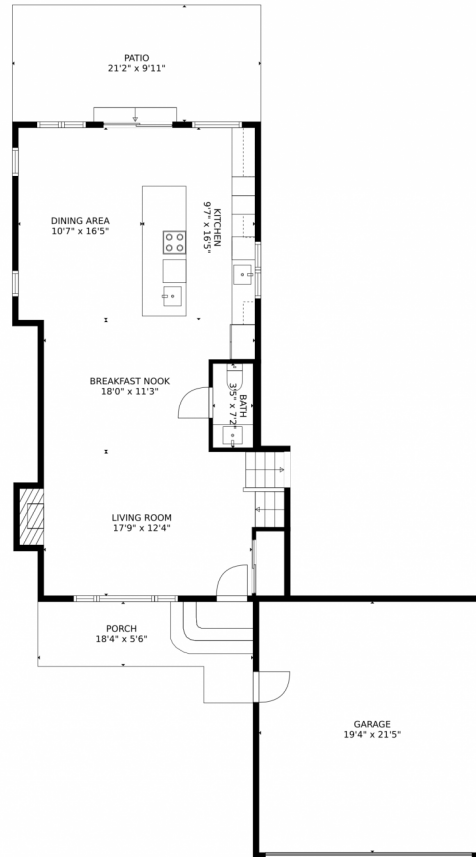
Disclaimer: Sizes and Dimensions are Approximate, Actual May Vary.



**Taylor Haas**  
303-665-7368  
taylorh@coloradorpm.com  
<https://www.coloradorpm.com/available-rental-properties-denver>



# 3682 South Mobile Way, Aurora, CO 80013 – Main Level



GROSS INTERNAL AREA  
Below Ground: 362 sq. ft. Below Ground: 417 sq. ft. FLOOR 3: 784 sq. ft. FLOOR 4: 417 sq. ft.  
EXCLUDED AREAS: GARAGE: 414 sq. ft. PATIO: 211 sq. ft. PORCH: 115 sq. ft.  
FIREPLACE: 8 sq. ft.  
TOTAL: 1980 sq. ft.  
MEASUREMENTS CALCULATED BY V1Photos.com ARE DEEMED HIGHLY RELIABLE BUT NOT GUARANTEED.

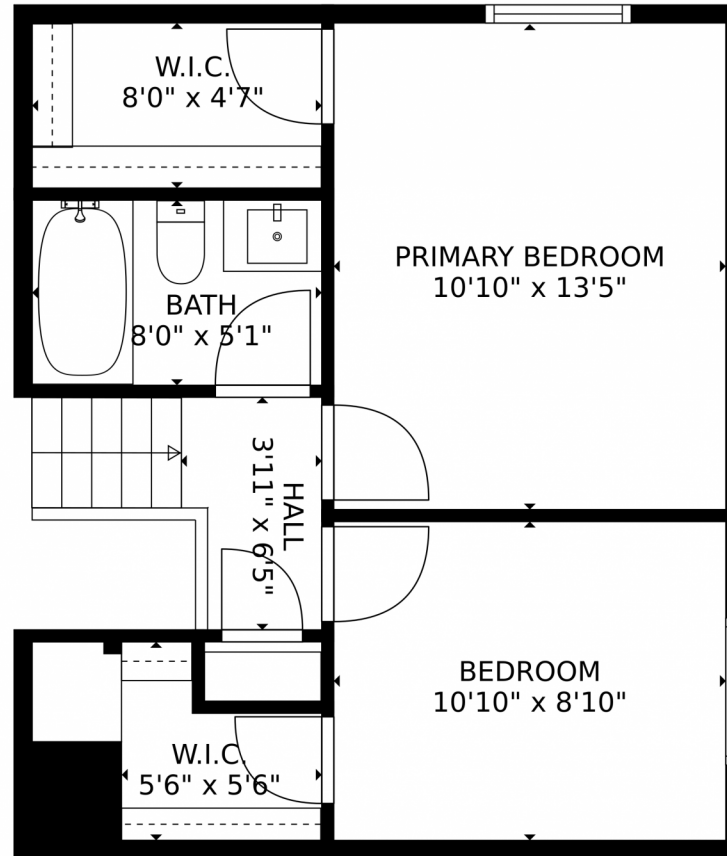


Disclaimer: Sizes and Dimensions are Approximate, Actual May Vary.



**Taylor Haas**  
303-665-7368  
taylorh@coloradorpm.com  
<https://www.coloradorpm.com/available-rental-properties-denver>





GROSS INTERNAL AREA  
Below Ground: 362 sq. ft. Below Ground: 417 sq. ft. FLOOR 3: 784 sq. ft. FLOOR 4: 417 sq. ft.  
EXCLUDED AREAS: GARAGE: 414 sq. ft. PATIO: 211 sq. ft. PORCH: 115 sq. ft.  
FIREPLACE: 8 sq. ft.  
TOTAL: 1980 sq. ft.  
MEASUREMENTS CALCULATED BY V1Photos.COM ARE DEEMED HIGHLY RELIABLE BUT NOT GUARANTEED.



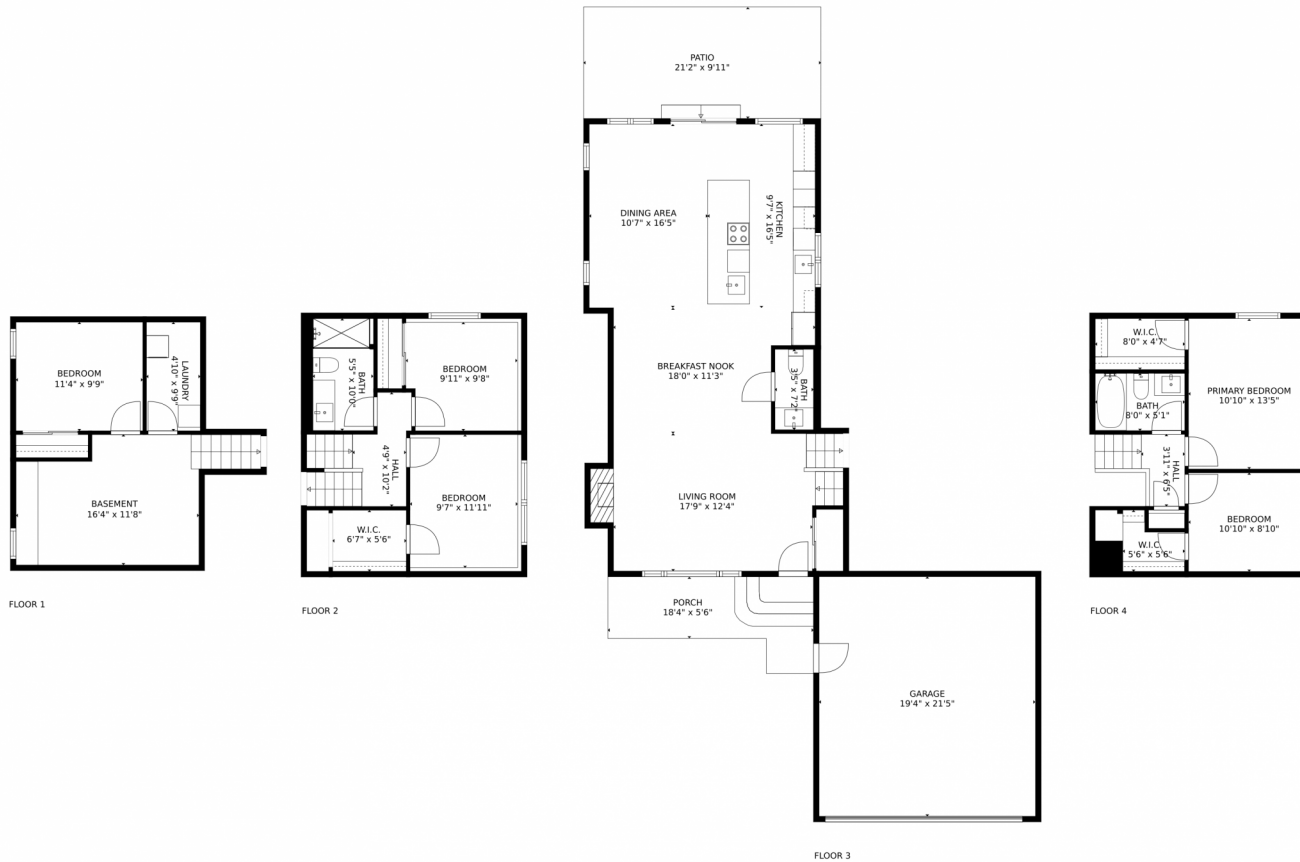
Disclaimer: Sizes and Dimensions are Approximate, Actual May Vary.



**Taylor Haas**  
303-665-7368  
taylorh@coloradorpm.com  
<https://www.coloradorpm.com/available-rental-properties-denver>



# 3682 South Mobile Way, Aurora, CO 80013 – All Levels



GROSS INTERNAL AREA  
Below Ground: 362 sq. ft. Below Ground: 417 sq. ft. FLOOR 3: 784 sq. ft. FLOOR 4: 417 sq. ft.  
EXCLUDED AREAS: GARAGE: 414 sq. ft. PATIO: 211 sq. ft. PORCH: 115 sq. ft.  
FIREPLACE: 8 sq. ft.  
TOTAL: 1980 sq. ft.  
MEASUREMENTS CALCULATED BY V1Photos.com ARE DEEMED HIGHLY RELIABLE BUT NOT GUARANTEED.



Disclaimer: Sizes and Dimensions are Approximate, Actual May Vary.



**Taylor Haas**  
303-665-7368  
taylorh@coloradorpm.com  
<https://www.coloradorpm.com/available-rental-properties-denver>



Scan code  
for more  
property  
details

