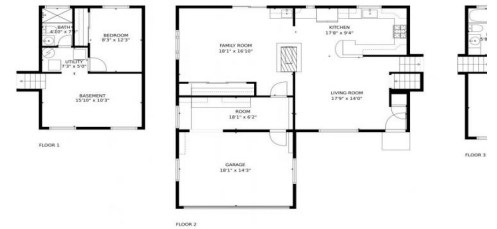





19065 West 59th Drive, Golden, CO 80403 - All Levels



 Single Family

 2416 SQFT

 3 Beds

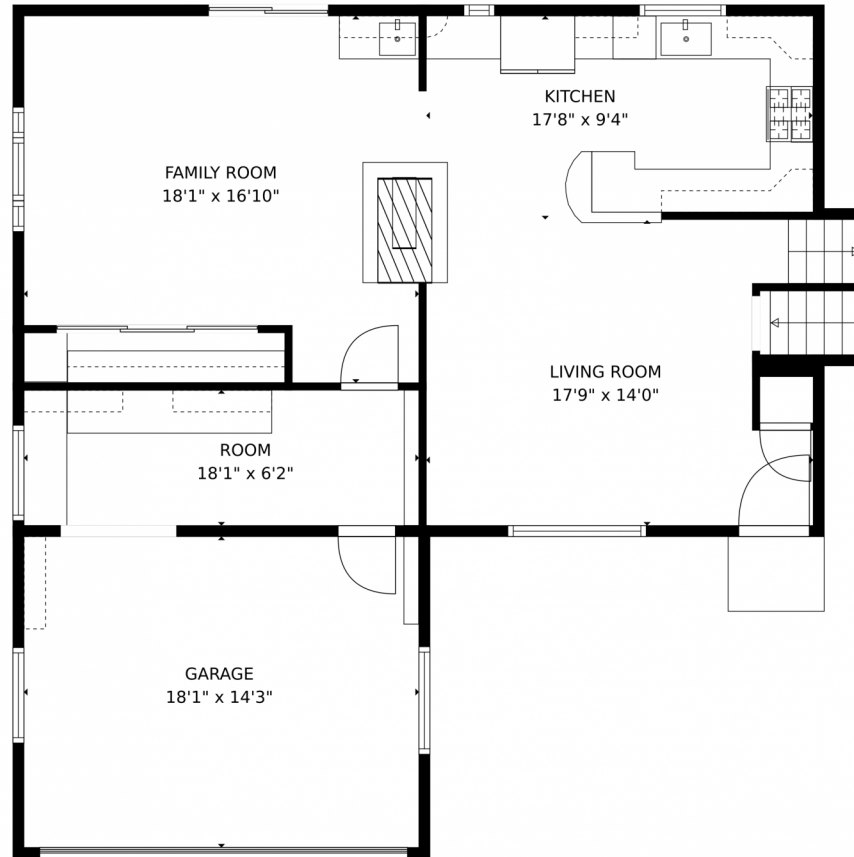
 1 Baths



**Taylor Haas**  
 303-665-7368  
 taylorh@coloradorpm.com  
<https://www.coloradorpm.com/available-rental-properties-denver>



# 19065 West 59th Drive, Golden, CO 80403 – Main Level



GROSS INTERNAL AREA  
Below Ground: 363 sq. ft., FLOOR 2: 838 sq. ft., FLOOR 3: 418 sq. ft.  
EXCLUDED AREAS: GARAGE: 257 sq. ft.  
TOTAL: 1619 sq. ft.  
MEASUREMENTS CALCULATED BY V1Photos.COM ARE DEEMED HIGHLY RELIABLE BUT NOT GUARANTEED.



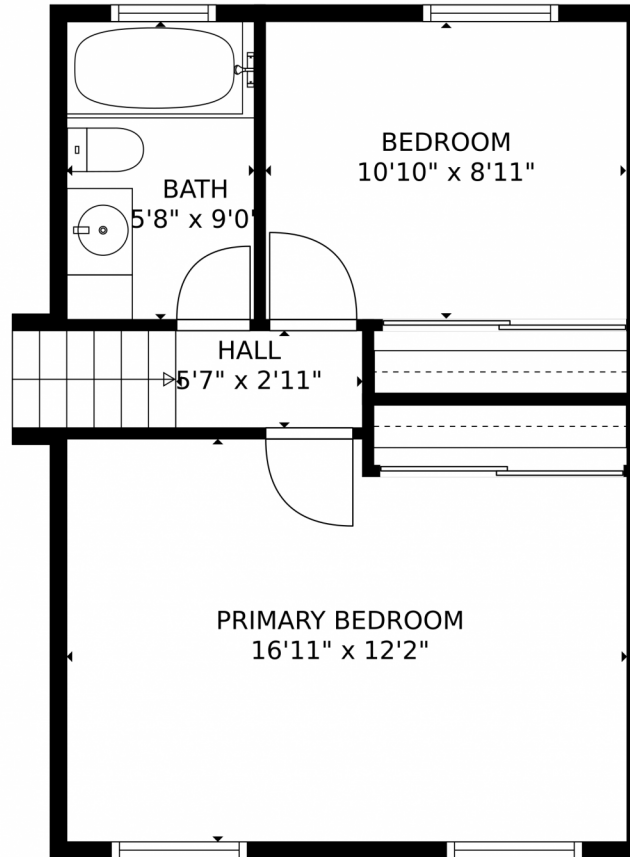
Disclaimer: Sizes and Dimensions are Approximate, Actual May Vary.



**Taylor Haas**  
303-665-7368  
taylorh@coloradorpm.com  
<https://www.coloradorpm.com/available-rental-properties-denver>



19065 West 59th Drive, Golden, CO 80403 – Upper Level



GROSS INTERNAL AREA  
Below Ground: 363 sq. ft, FLOOR 2: 838 sq. ft, FLOOR 3: 418 sq. ft  
EXCLUDED AREAS: GARAGE: 257 sq. ft  
TOTAL: 1619 sq. ft  
MEASUREMENTS CALCULATED BY V1Photos.com ARE DEEMED HIGHLY RELIABLE BUT NOT GUARANTEED.



Disclaimer: Sizes and Dimensions are Approximate, Actual May Vary.



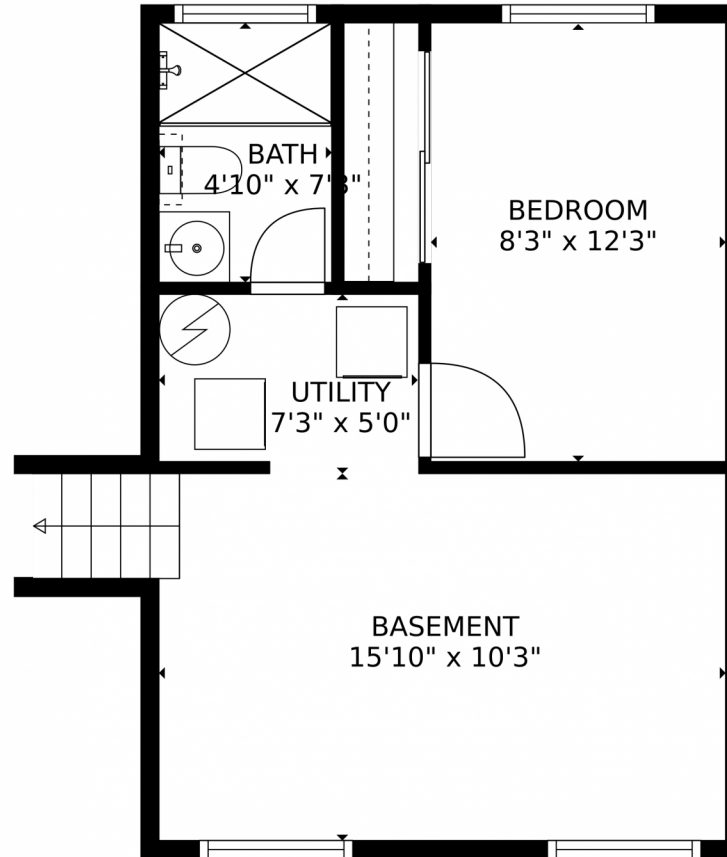
**Taylor Haas**  
303-665-7368  
taylorh@coloradorpm.com  
<https://www.coloradorpm.com/available-rental-properties-denver>



Scan code for more property details



19065 West 59th Drive, Golden, CO 80403 — Lower Level



GROSS INTERNAL AREA  
Below Ground: 363 sq. ft, FLOOR 2: 838 sq. ft, FLOOR 3: 418 sq. ft  
EXCLUDED AREAS: GARAGE: 257 sq. ft  
TOTAL: 1619 sq. ft  
MEASUREMENTS CALCULATED BY V1Photos.com ARE DEEMED HIGHLY RELIABLE BUT NOT GUARANTEED.



Disclaimer: Sizes and Dimensions are Approximate, Actual May Vary.



**Taylor Haas**  
303-665-7368  
taylorh@coloradorpm.com  
<https://www.coloradorpm.com/available-rental-properties-denv>

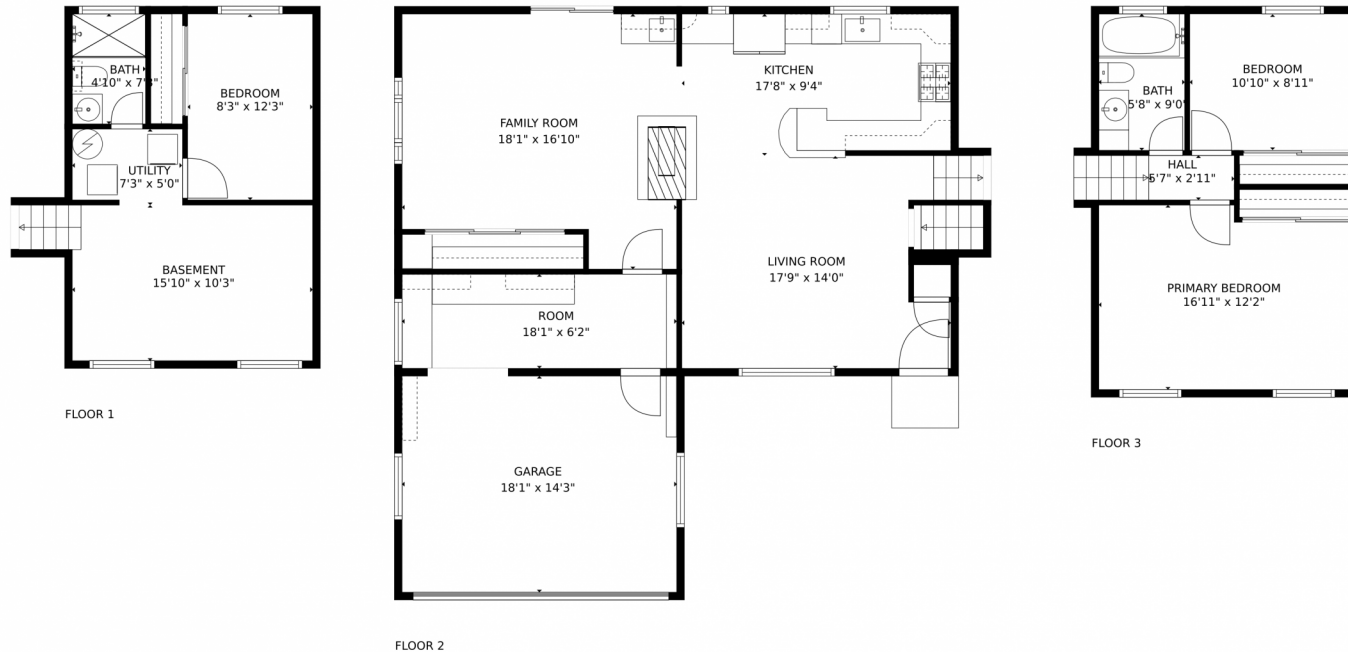


Scan code  
for more  
property  
details





# 19065 West 59th Drive, Golden, CO 80403 – All Levels



GROSS INTERNAL AREA  
Below Ground: 363 sq. ft, FLOOR 2: 838 sq. ft, FLOOR 3: 418 sq. ft  
EXCLUDED AREAS: GARAGE: 257 sq. ft  
TOTAL: 1619 sq. ft  
MEASUREMENTS CALCULATED BY V1Photos.COM ARE DEEMED HIGHLY RELIABLE BUT NOT GUARANTEED.



Disclaimer: Sizes and Dimensions are Approximate, Actual May Vary.



**Taylor Haas**  
303-665-7368  
taylorh@coloradorpm.com  
<https://www.coloradorpm.com/available-rental-properties-denver>



Scan code  
for more  
property  
details

