



6259 South Jamestown Court  
Aurora, CO 80016  
COMMUNITY: Wheatlands



Single Family



2392 SQFT



4 Beds



3/1 Baths



3 Car



0.17 Acre



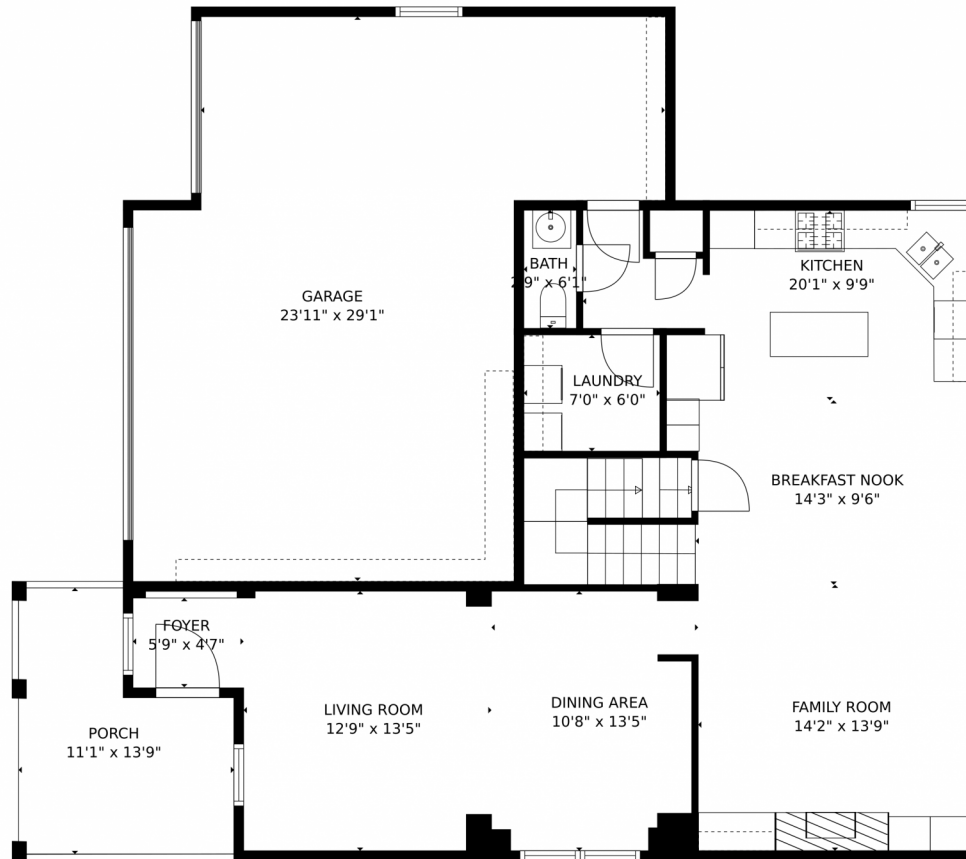
**Tatyana Sturm**  
720-350-5909  
tatyana@exitrealtydtc.com  
<https://thestorckteam.com>



Scan code  
for more  
property  
details



# 6259 South Jamestown Court, Aurora, CO 80016 – Main Level



**TOTAL: 3136 sq. ft**  
Below Ground: 789 sq. ft, FLOOR 2: 985 sq. ft, FLOOR 3: 1362 sq. ft  
EXCLUDED AREAS: ELECTRICAL ROOM: 90 sq. ft, GARAGE: 611 sq. ft, PORCH: 120 sq. ft,  
EMBEDDED WINDOW: 7 sq. ft

MEASUREMENTS CALCULATED BY V1Photos.COM ARE DEEMED HIGHLY RELIABLE BUT NOT GUARANTEED.



Disclaimer: Sizes and Dimensions are Approximate, Actual May Vary.



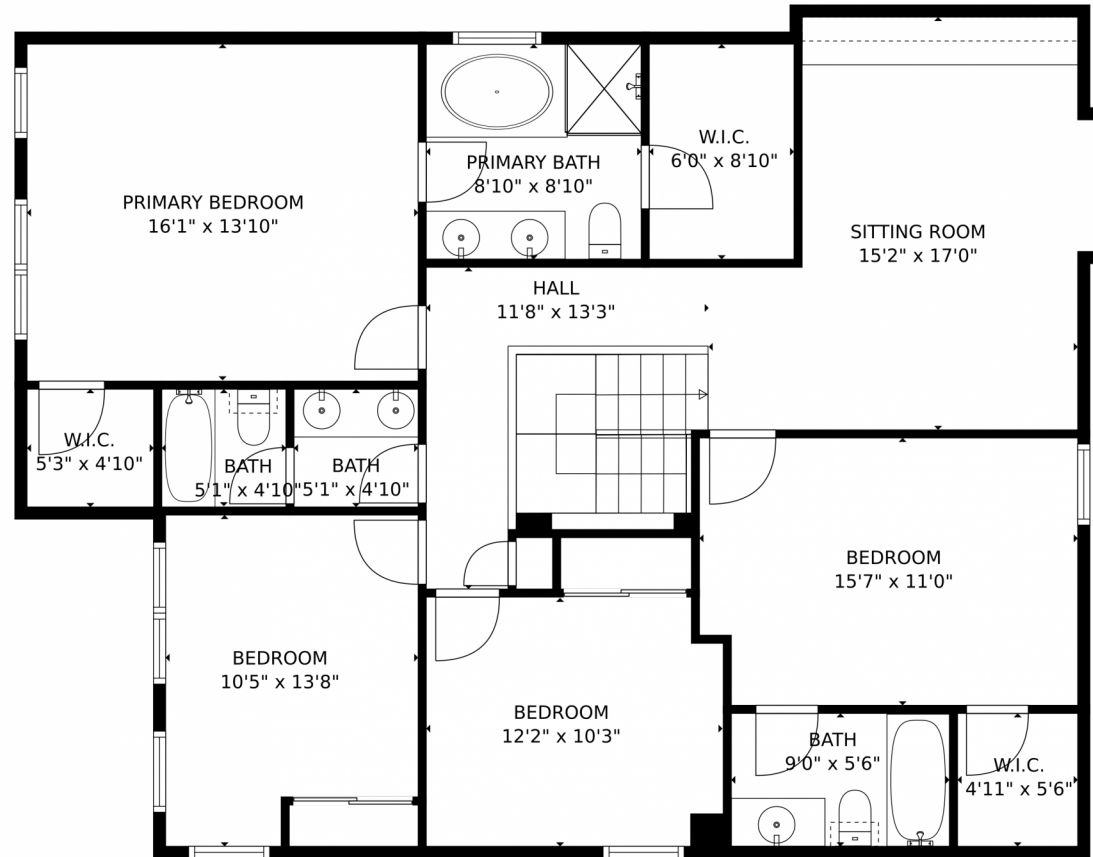
**Tatyana Sturm**  
720-350-5909  
tatyana@exitrealtydtc.com  
<https://thestorckteam.com>



Scan code  
for more  
property  
details



# 6259 South Jamestown Court, Aurora, CO 80016 – Upper Level



**TOTAL: 3136 sq. ft**  
Below Ground: 789 sq. ft, FLOOR 2: 985 sq. ft, FLOOR 3: 1362 sq. ft  
EXCLUDED AREAS: ELECTRICAL ROOM: 90 sq. ft, GARAGE: 611 sq. ft, PORCH: 120 sq. ft,  
EMBEDDED WINDOW: 7 sq. ft

MEASUREMENTS CALCULATED BY V1Photos.com ARE DEEMED HIGHLY RELIABLE BUT NOT GUARANTEED.



Disclaimer: Sizes and Dimensions are Approximate, Actual May Vary.



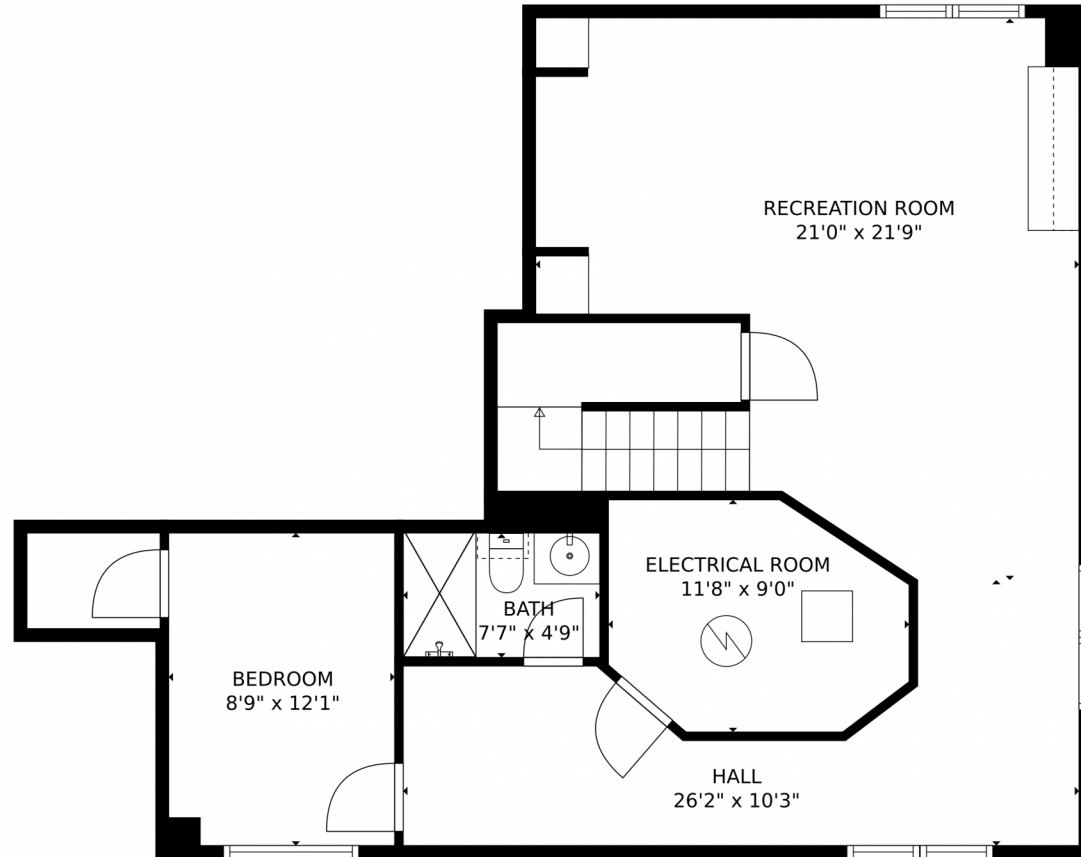
**Tatyana Sturm**  
720-350-5909  
tatyana@exitrealttydc.com  
<https://thestorckteam.com>



Scan code  
for more  
property  
details



# 6259 South Jamestown Court, Aurora, CO 80016 – Lower Level



**TOTAL: 3136 sq. ft**  
Below Ground: 789 sq. ft, FLOOR 2: 985 sq. ft, FLOOR 3: 1362 sq. ft  
EXCLUDED AREAS: ELECTRICAL ROOM: 90 sq. ft, GARAGE: 611 sq. ft, PORCH: 120 sq. ft,  
EMBEDDED WINDOW: 7 sq. ft

MEASUREMENTS CALCULATED BY V1Photos.com ARE DEEMED HIGHLY RELIABLE BUT NOT GUARANTEED.



Disclaimer: Sizes and Dimensions are Approximate, Actual May Vary.



**Tatyana Sturm**  
720-350-5909  
tatyana@exitrealtydtc.com  
<https://thestorckteam.com>





# 6259 South Jamestown Court, Aurora, CO 80016 – All Levels



**TOTAL: 3136 sq. ft**  
Below Ground: 789 sq. ft, FLOOR 2: 985 sq. ft, FLOOR 3: 1362 sq. ft  
EXCLUDED AREAS: ELECTRICAL ROOM: 90 sq. ft, GARAGE: 611 sq. ft, PORCH: 120 sq. ft,  
EMBEDDED WINDOW: 7 sq. ft

MEASUREMENTS CALCULATED BY V1Photos.com ARE DEEMED HIGHLY RELIABLE BUT NOT GUARANTEED.



Disclaimer: Sizes and Dimensions are Approximate, Actual May Vary.



**Tatyana Sturm**  
720-350-5909  
tatyana@exitrealttydc.com  
<https://thestorckteam.com>



Scan code  
for more  
property  
details

