




 Single Family

 3164 SQFT

 4 Beds

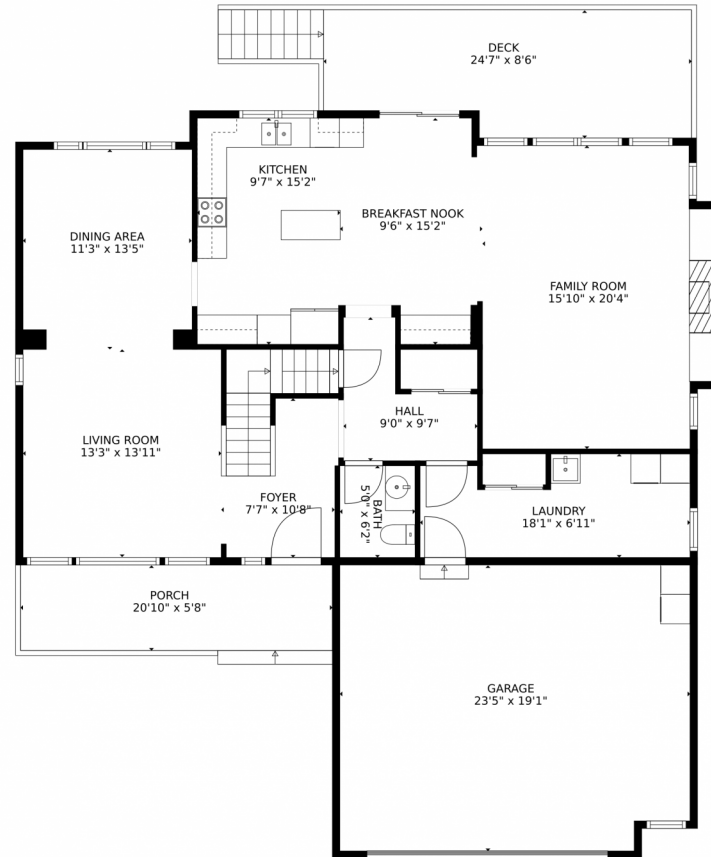
 3/1 Baths



Taylor Haas
303-665-7368
taylorh@coloradorpm.com
<https://www.coloradorpm.com/available-rental-properties-denver>



16592 Oakmoor Place, Parker, CO 80134 – Main Level



GROSS INTERNAL AREA
Below Ground: 703 sq. ft, FLOOR 2: 1282 sq. ft, FLOOR 3: 1185 sq. ft
EXCLUDED AREAS: UTILITY: 219 sq. ft, STORAGE: 290 sq. ft, GARAGE: 441 sq. ft,
DECK: 192 sq. ft, PORCH: 119 sq. ft, OPEN TO BELOW: 61 sq. ft
TOTAL: 3170 sq. ft
MEASUREMENTS CALCULATED BY V1Photos.COM ARE DEEMED HIGHLY RELIABLE BUT NOT GUARANTEED.



Disclaimer: Sizes and Dimensions are Approximate, Actual May Vary.



Taylor Haas

303-665-7368

taylorh@coloradorpm.com

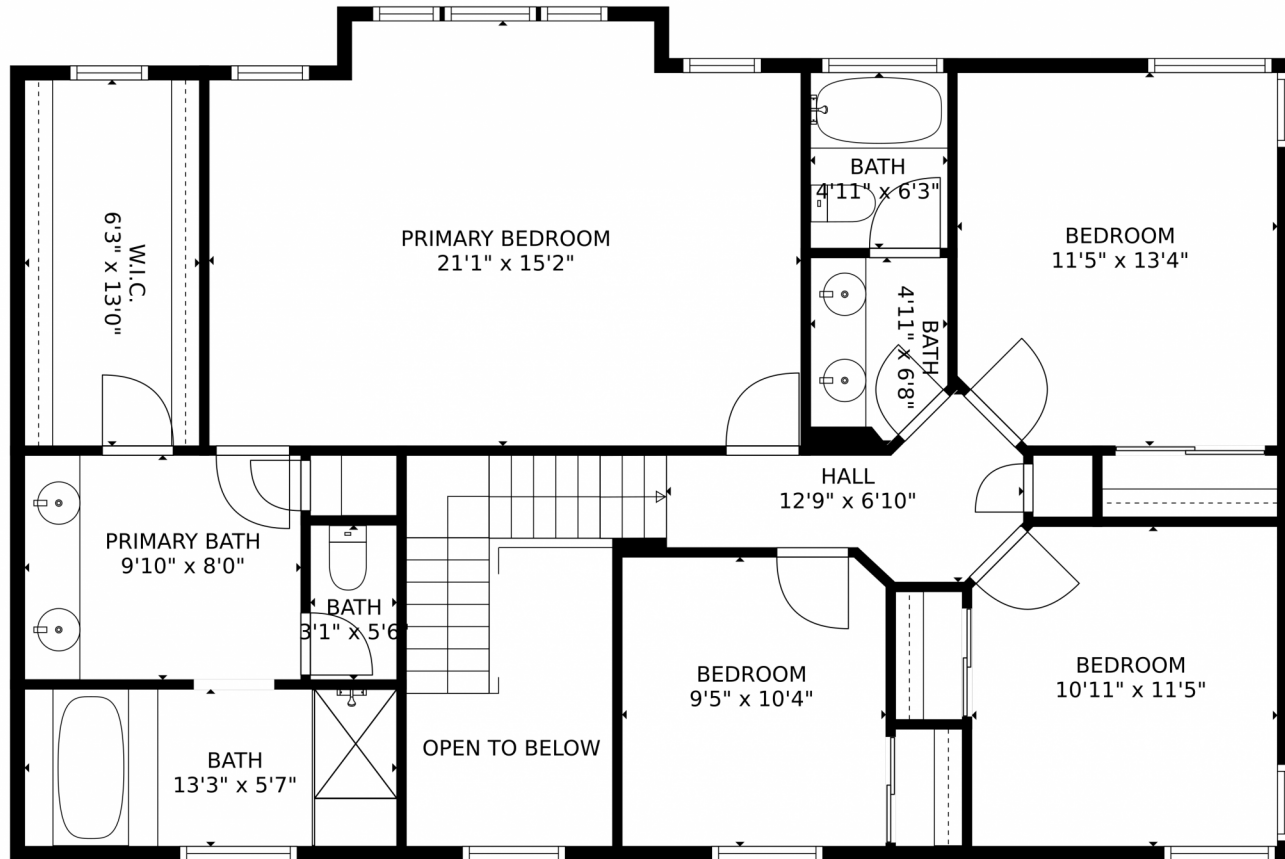
<https://www.coloradorpm.com/available-rental-properties-denver>



Scan code
for more
property
details



16592 Oakmoor Place, Parker, CO 80134 – Upper Level



GROSS INTERNAL AREA
Below Ground: 703 sq. ft, FLOOR 2: 1282 sq. ft, FLOOR 3: 1185 sq. ft
EXCLUDED AREAS: UTILITY: 219 sq. ft, STORAGE: 290 sq. ft, GARAGE: 441 sq. ft,
DECK: 192 sq. ft, PORCH: 119 sq. ft, OPEN TO BELOW: 61 sq. ft
TOTAL: 3170 sq. ft
MEASUREMENTS CALCULATED BY V1Photos.COM ARE DEEMED HIGHLY RELIABLE BUT NOT GUARANTEED.



Disclaimer: Sizes and Dimensions are Approximate, Actual May Vary.



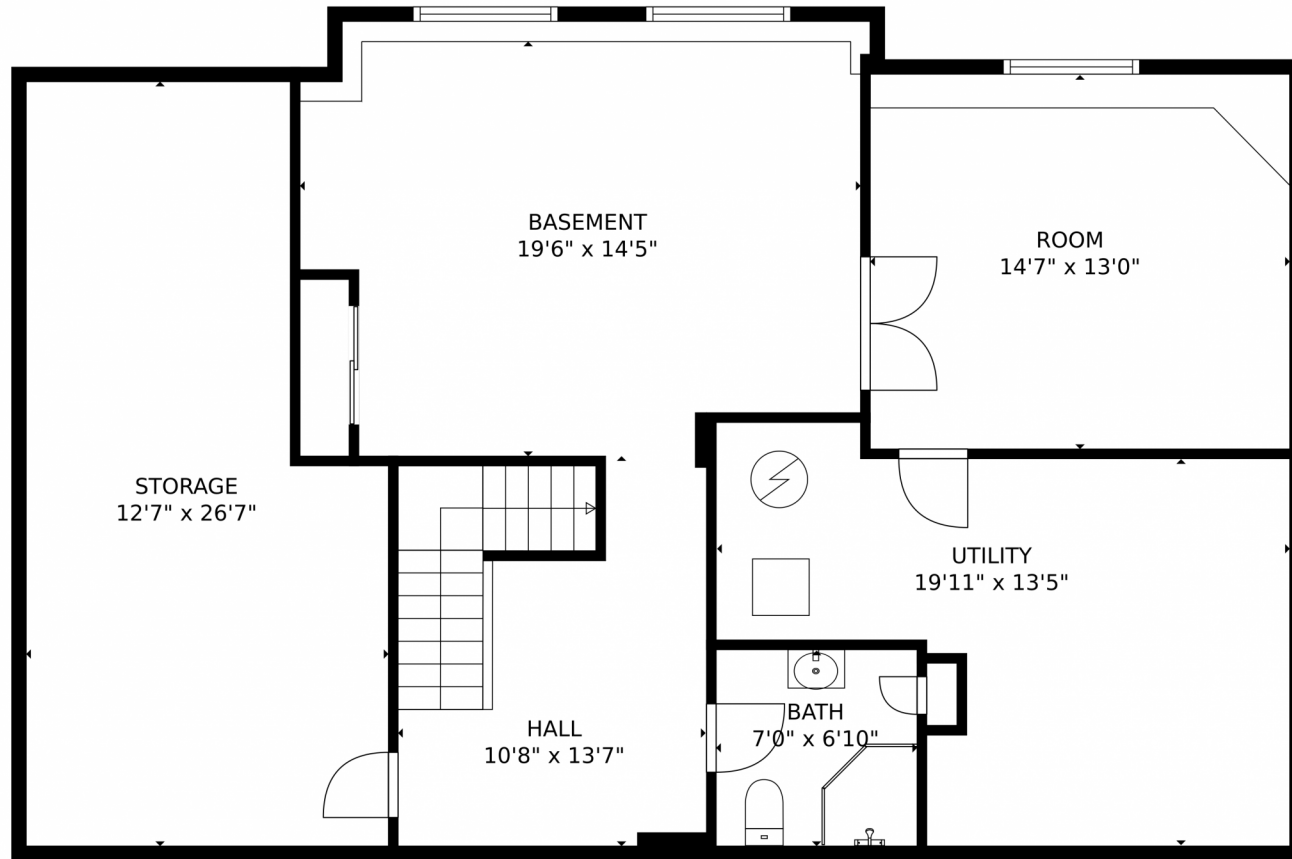
Taylor Haas
303-665-7368
taylorh@coloradorpm.com
<https://www.coloradorpm.com/available-rental-properties-denver>



Scan code
for more
property
details



16592 Oakmoor Place, Parker, CO 80134 – Lower Level



GROSS INTERNAL AREA
Below Ground: 703 sq. ft, FLOOR 2: 1282 sq. ft, FLOOR 3: 1185 sq. ft
EXCLUDED AREAS: UTILITY: 219 sq. ft, STORAGE: 290 sq. ft, GARAGE: 441 sq. ft,
DECK: 192 sq. ft, PORCH: 119 sq. ft, OPEN TO BELOW: 61 sq. ft
TOTAL: 3170 sq. ft
MEASUREMENTS CALCULATED BY V1Photos.com ARE DEEMED HIGHLY RELIABLE BUT NOT GUARANTEED.

Disclaimer: Sizes and Dimensions are Approximate, Actual May Vary.



Taylor Haas
303-665-7368
taylorh@coloradorpm.com
<https://www.coloradorpm.com/available-rental-properties-denver>



Scan code
for more
property
details



16592 Oakmoor Place, Parker, CO 80134 – All Levels



GROSS INTERNAL AREA
Below Ground: 703 sq. ft, FLOOR 2: 1282 sq. ft, FLOOR 3: 1185 sq. ft
EXCLUDED AREAS: UTILITY: 219 sq. ft, STORAGE: 290 sq. ft, GARAGE: 441 sq. ft,
DECK: 192 sq. ft, PORCH: 119 sq. ft, OPEN TO BELOW: 61 sq. ft
TOTAL: 3170 sq. ft
MEASUREMENTS CALCULATED BY V1Photos.com ARE DEEMED HIGHLY RELIABLE BUT NOT GUARANTEED.



Disclaimer: Sizes and Dimensions are Approximate, Actual May Vary.



Taylor Haas
303-665-7368
taylorh@coloradorpm.com
<https://www.coloradorpm.com/available-rental-properties-denver>



Scan code
for more
property
details

