



Single Family

2000 SQFT

4 Beds

3 Baths

## PROPERTY DETAILS

Discover this charming Single Family home located at 297 Rodden Drive in Erie, CO. With 4 bedrooms, 3 full bathrooms, and a comfortable living space of 2000 sqft, this property offers ample room for a growing family or those seeking extra space. The open layout of the living areas creates a seamless flow, perfect for entertaining and everyday living. The well-designed kitchen is equipped with modern appliances and abundant storage. The bedrooms are generously sized and offer plenty of natural light, while the bathrooms provide a relaxing retreat.

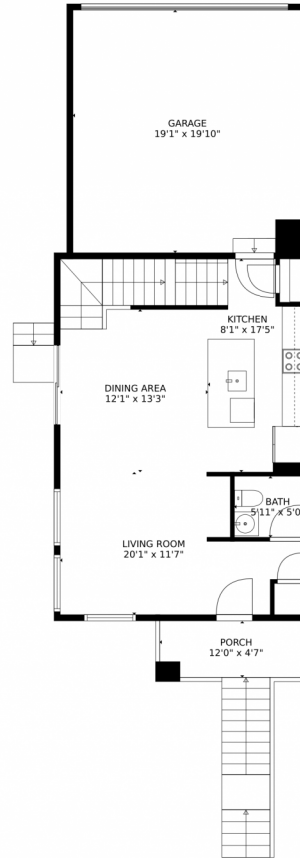
Located in a desirable community, this property offers a peaceful and family-friendly neighborhood. Close proximity to schools, parks, and shopping centers ensures convenience and accessibility. Don't miss out on the opportunity to make this house your dream home!



**Taylor Haas**  
303-665-7368  
taylorh@coloradorpm.com  
<https://www.coloradorpm.com/available-rental-properties-denver>



# 297 Rodden Drive, Erie, CO 80516 – Main Level



GROSS INTERNAL AREA  
Below Ground: 476 sq. ft, FLOOR 2: 583 sq. ft, FLOOR 3: 979 sq. ft  
EXCLUDED AREAS: LOW CEILING: 79 sq. ft, PORCH: 55 sq. ft, GARAGE: 377 sq. ft  
TOTAL: 2038 sq. ft  
MEASUREMENTS CALCULATED BY V1Photos.com ARE DEEMED HIGHLY RELIABLE BUT NOT GUARANTEED.



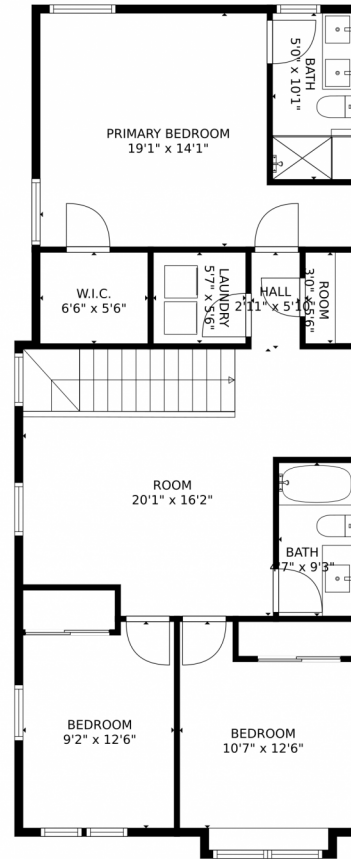
Disclaimer: Sizes and Dimensions are Approximate, Actual May Vary.



**Taylor Haas**  
303-665-7368  
taylorh@coloradorpm.com  
<https://www.coloradorpm.com/available-rental-properties-denver>



# 297 Rodden Drive, Erie, CO 80516 – Upper Level



GROSS INTERNAL AREA  
Below Ground: 476 sq. ft, FLOOR 2: 583 sq. ft, FLOOR 3: 979 sq. ft  
EXCLUDED AREAS: LOW CEILING: 79 sq. ft, PORCH: 55 sq. ft, GARAGE: 377 sq. ft  
TOTAL: 2038 sq. ft  
MEASUREMENTS CALCULATED BY V1Photos.com ARE DEEMED HIGHLY RELIABLE BUT NOT GUARANTEED.



Disclaimer: Sizes and Dimensions are Approximate, Actual May Vary.



**Taylor Haas**

303-665-7368

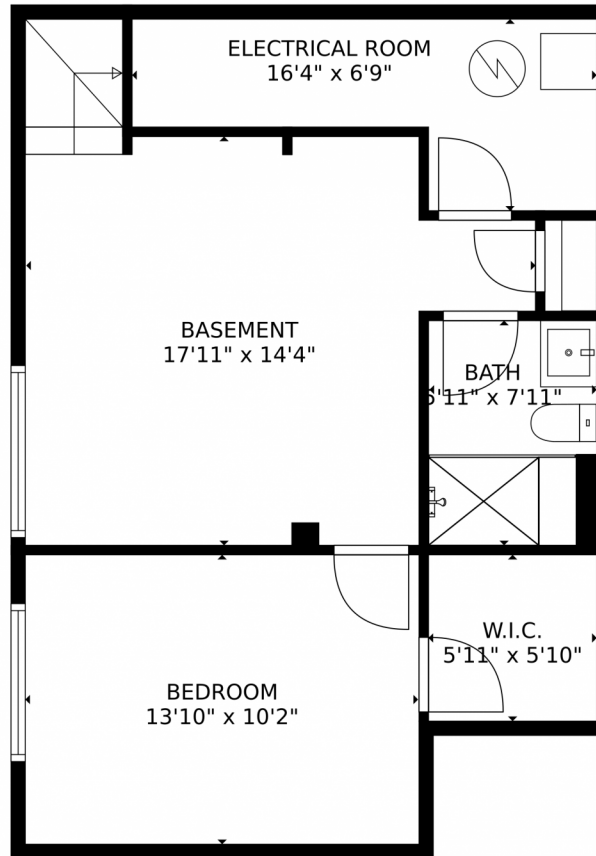
taylorh@coloradorpm.com

<https://www.coloradorpm.com/available-rental-properties-denver>



Scan code  
for more  
property  
details





GROSS INTERNAL AREA  
Below Ground: 476 sq. ft, FLOOR 2: 583 sq. ft, FLOOR 3: 979 sq. ft  
EXCLUDED AREAS: LOW CEILING: 79 sq. ft, PORCH: 55 sq. ft, GARAGE: 377 sq. ft  
TOTAL: 2038 sq. ft  
MEASUREMENTS CALCULATED BY V1Photos.com ARE DEEMED HIGHLY RELIABLE BUT NOT GUARANTEED.



Disclaimer: Sizes and Dimensions are Approximate, Actual May Vary.



**Taylor Haas**  
303-665-7368  
taylorh@coloradorpm.com  
<https://www.coloradorpm.com/available-rental-properties-denver>





# 297 Rodden Drive, Erie, CO 80516 – All Levels



GROSS INTERNAL AREA  
Below Ground: 476 sq. ft, FLOOR 2: 583 sq. ft, FLOOR 3: 979 sq. ft  
EXCLUDED AREAS: LOW CEILING: 79 sq. ft, PORCH: 55 sq. ft, GARAGE: 377 sq. ft  
TOTAL: 2038 sq. ft  
MEASUREMENTS CALCULATED BY V1Photos.COM ARE DEEMED HIGHLY RELIABLE BUT NOT GUARANTEED.

Disclaimer: Sizes and Dimensions are Approximate, Actual May Vary.



**Taylor Haas**  
303-665-7368  
taylorh@coloradorpm.com  
<https://www.coloradorpm.com/available-rental-properties-denver>

