



 Single Family  2592 SQFT  3 Beds  2 Baths  2 Car  0.55 Acre

PROPERTY DETAILS

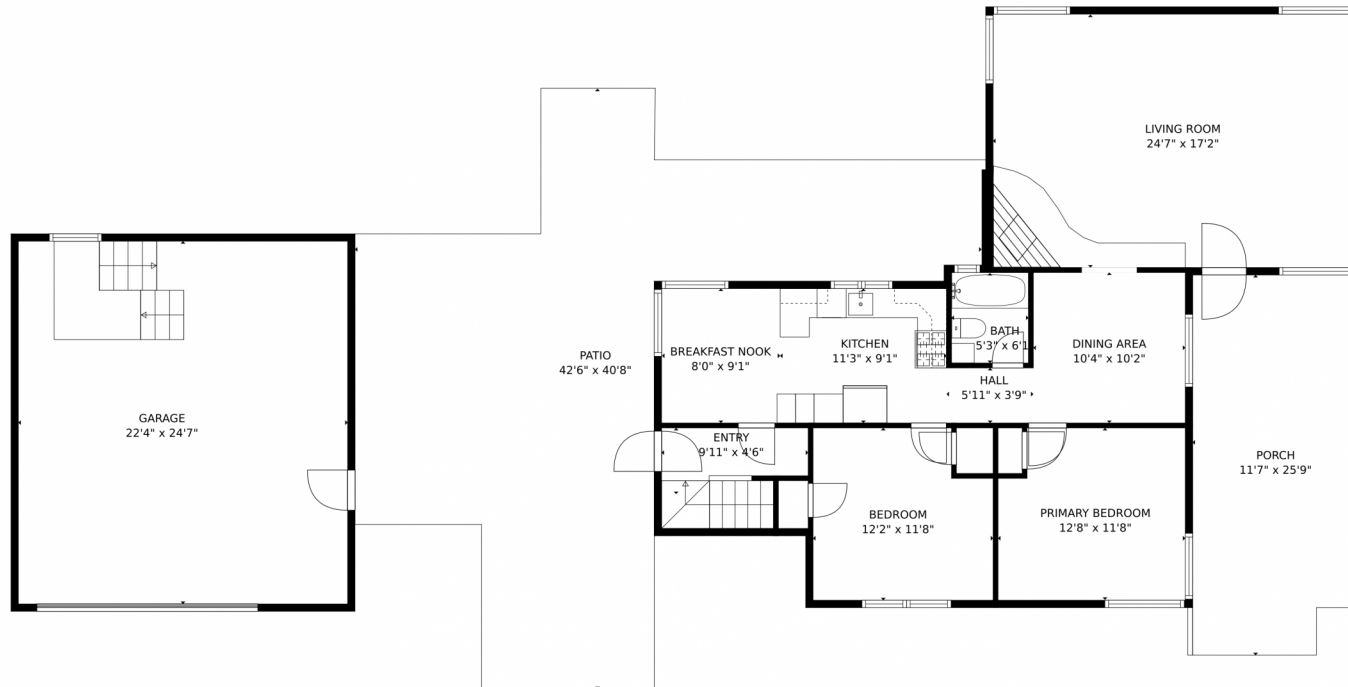
Rare opportunity to own a charming 1937 home in Wheat Ridge with over half an acre of land. Solar panels provide excellent energy results. Main level features two bedrooms, dining room, kitchen, and living room with corner windows and a brick fireplace. Lower level has one bedroom, full bathroom, kitchen, family room with fireplace, and separate entrance. Beautiful brick drive-through driveway and ample parking. Urban farmer's dream with apple and peach trees, grape vine, and native beds. Walk-in cellar for storage. Two-car detached garage with storage above. Don't miss out on this gem!



Holly Worley
303-257-8091
findahomewithholly@gmail.com



6185 W 29th Avenue, Wheat Ridge, CO 80214 – Main Level



GROSS INTERNAL AREA
Below Ground: 608 sq. ft, FLOOR 2: 1144 sq. ft, FLOOR 3: 355 sq. ft
EXCLUDED AREAS: UTILITY: 268 sq. ft, ROOM: 32 sq. ft, STORAGE: 50 sq. ft,
SCREENED PORCH: 58 sq. ft, GARAGE: 549 sq. ft, PORCH: 287 sq. ft,
PATIO: 788 sq. ft, ATTIC: 209 sq. ft
TOTAL: 2107 sq. ft
MEASUREMENTS CALCULATED BY V1Photos.COM ARE DEEMED HIGHLY RELIABLE BUT NOT GUARANTEED.



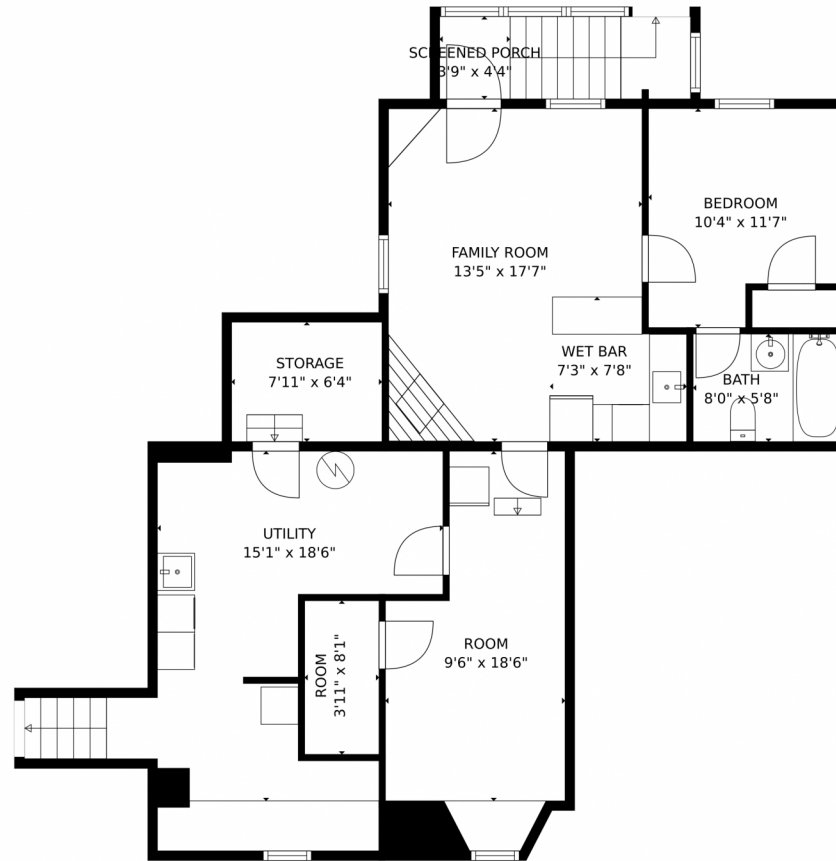
Disclaimer: Sizes and Dimensions are Approximate, Actual May Vary.



Holly Worley
303-257-8091
findahomewithholly@gmail.com



6185 W 29th Avenue, Wheat Ridge, CO 80214 – Lower Level



GROSS INTERNAL AREA
Below Ground: 608 sq. ft, FLOOR 2: 1144 sq. ft, FLOOR 3: 355 sq. ft
EXCLUDED AREAS: UTILITY: 268 sq. ft, ROOM: 32 sq. ft, STORAGE: 50 sq. ft,
SCREENED PORCH: 58 sq. ft, GARAGE: 549 sq. ft, PORCH: 287 sq. ft,
PATIO: 788 sq. ft, ATTIC: 209 sq. ft
TOTAL: 2107 sq. ft
MEASUREMENTS CALCULATED BY V1Photos.com ARE DEEMED HIGHLY RELIABLE BUT NOT GUARANTEED.

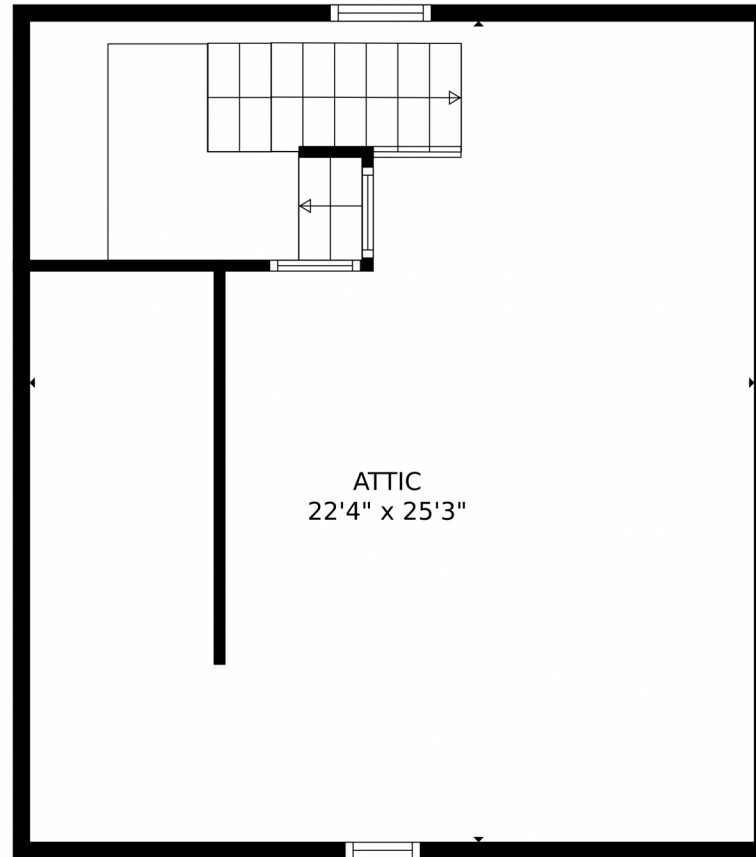


Disclaimer: Sizes and Dimensions are Approximate, Actual May Vary.



Holly Worley
303-257-8091
findahomewithholly@gmail.com





GROSS INTERNAL AREA
Below Ground: 608 sq. ft, FLOOR 2: 1144 sq. ft, FLOOR 3: 355 sq. ft
EXCLUDED AREAS: UTILITY: 268 sq. ft, ROOM: 32 sq. ft, STORAGE: 50 sq. ft,
SCREENED PORCH: 58 sq. ft, GARAGE: 549 sq. ft, PORCH: 287 sq. ft,
PATIO: 788 sq. ft, ATTIC: 209 sq. ft
TOTAL: 2107 sq. ft
MEASUREMENTS CALCULATED BY V1Photos.com ARE DEEMED HIGHLY RELIABLE BUT NOT GUARANTEED.



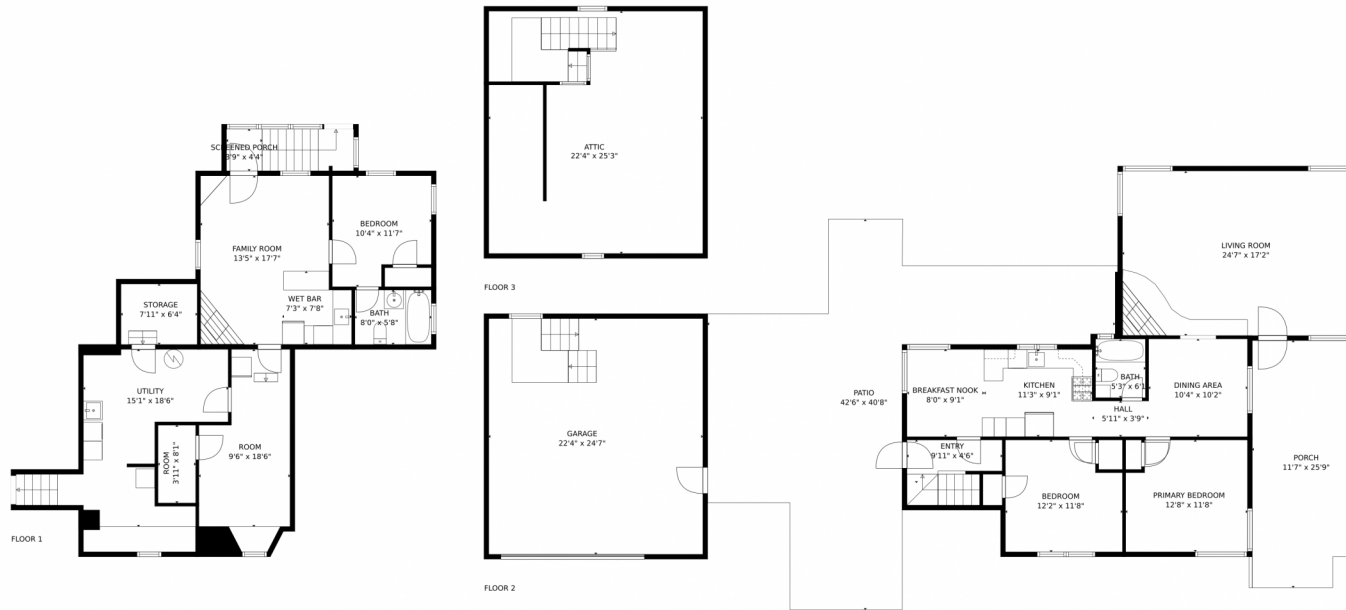
Disclaimer: Sizes and Dimensions are Approximate, Actual May Vary.



Holly Worley
303-257-8091
findahomewithholly@gmail.com



6185 W 29th Avenue, Wheat Ridge, CO 80214 – All Levels



GROSS INTERNAL AREA
Below Ground: 608 sq. ft, FLOOR 2: 1144 sq. ft, FLOOR 3: 355 sq. ft
EXCLUDED AREAS: UTILITY: 268 sq. ft, ROOM: 32 sq. ft, STORAGE: 50 sq. ft,
SCREENED PORCH: 58 sq. ft, GARAGE: 549 sq. ft, PORCH: 287 sq. ft,
PATIO: 788 sq. ft, ATTIC: 209 sq. ft
TOTAL: 2107 sq. ft

MEASUREMENTS CALCULATED BY V1Photos.COM ARE DEEMED HIGHLY RELIABLE BUT NOT GUARANTEED.



Disclaimer: Sizes and Dimensions are Approximate, Actual May Vary.



Holly Worley
303-257-8091
findahomewithholly@gmail.com



Scan code
for more
property
details

