



17055 E Ithaca Circle
Aurora, CO 80013
COMMUNITY: Summer Valley

MLS # 5918813
PRICE \$475,000



Single Family



2173 SQFT



3 Beds



2/1 Baths



2 Car



0.2 Acre

PROPERTY DETAILS

Welcome to Summer Valley in Aurora, CO! This beautiful two-story home has been completely renovated and is move-in ready. The main level features new flooring, paint, and a sunny living room. The kitchen, breakfast nook, and family room create a perfect entertainment space. Upstairs, the owner's suite has a remodeled bathroom and walk-in closet. There are two additional bedrooms and a full bath. Outside, there is a large patio for outdoor gatherings. Summer Valley residents enjoy the excellent Cherry Creek Schools and have easy access to Cherry Creek Reservoir and State Park. The park offers activities such as boating, fishing, and camping, as well as biking trails and a dog park.



Tatyana Sturm

720-350-5909

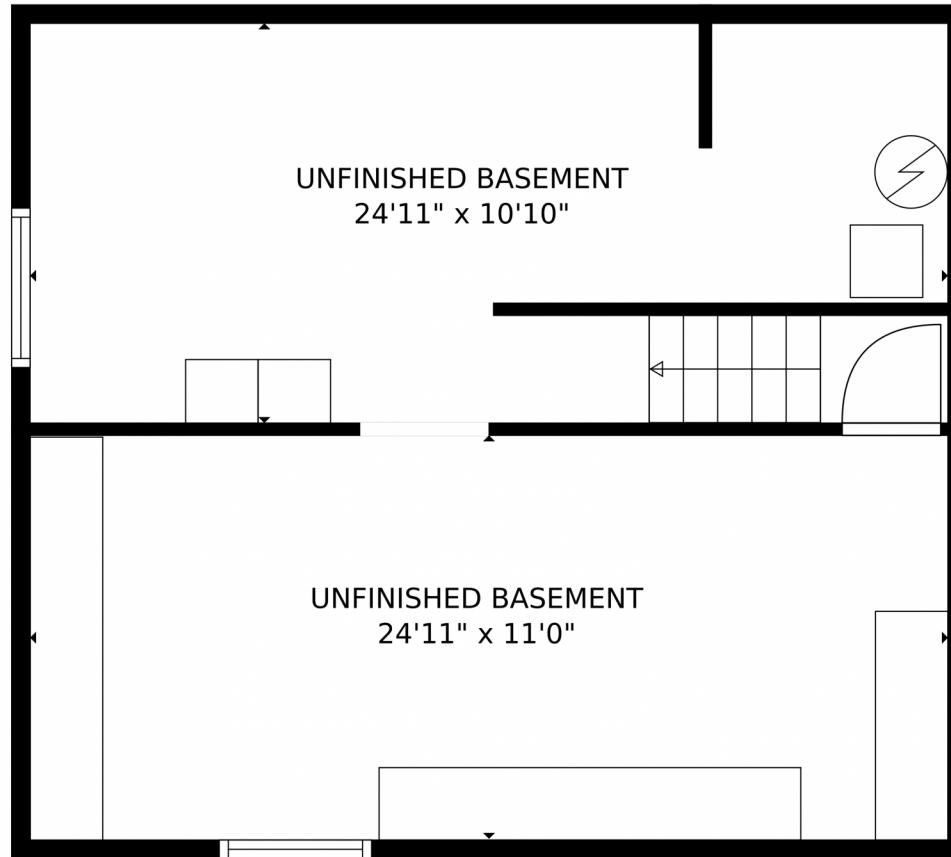
tatyana@exitrealtydtc.com

<https://thestorckteam.com>



Scan code
for more
property
details





GROSS INTERNAL AREA
Below Ground: 0 sq. ft, FLOOR 2: 834 sq. ft, FLOOR 3: 638 sq. ft
EXCLUDED AREAS: UNFINISHED BASEMENT: 553 sq. ft, PORCH: 51 sq. ft, PATIO: 389 sq. ft.
GARAGE: 418 sq. ft, FIREPLACE: 6 sq. ft
TOTAL: 1472 sq. ft
MEASUREMENTS CALCULATED BY V1Photos.com ARE DEEMED HIGHLY RELIABLE BUT NOT GUARANTEED.



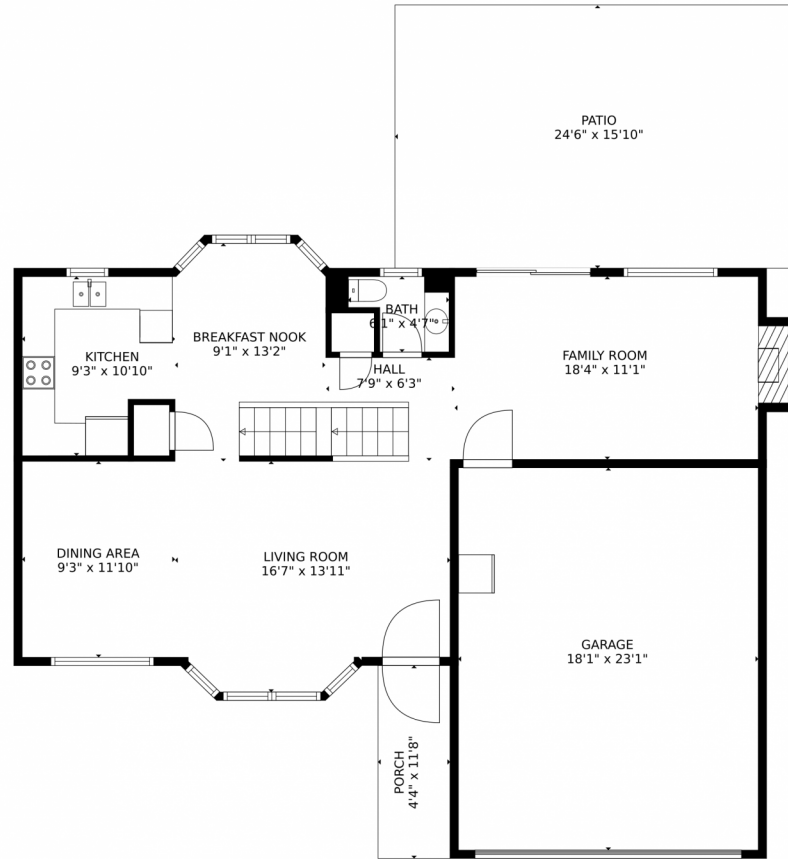
Disclaimer: Sizes and Dimensions are Approximate, Actual May Vary.



Tatyana Sturm
720-350-5909
tatyana@exitrealtydtc.com
<https://thestorckteam.com>



17055 E Ithaca Circle, Aurora, CO 80013 – Main Level



GROSS INTERNAL AREA
Below Ground: 0 sq. ft, FLOOR 2: 834 sq. ft, FLOOR 3: 638 sq. ft
EXCLUDED AREAS: UNFINISHED BASEMENT: 553 sq. ft, PORCH: 51 sq. ft, PATIO: 389 sq. ft.
GARAGE: 418 sq. ft, FIREPLACE: 6 sq. ft
TOTAL: 1472 sq. ft
MEASUREMENTS CALCULATED BY V1Photos.com ARE DEEMED HIGHLY RELIABLE BUT NOT GUARANTEED.



Disclaimer: Sizes and Dimensions are Approximate, Actual May Vary.



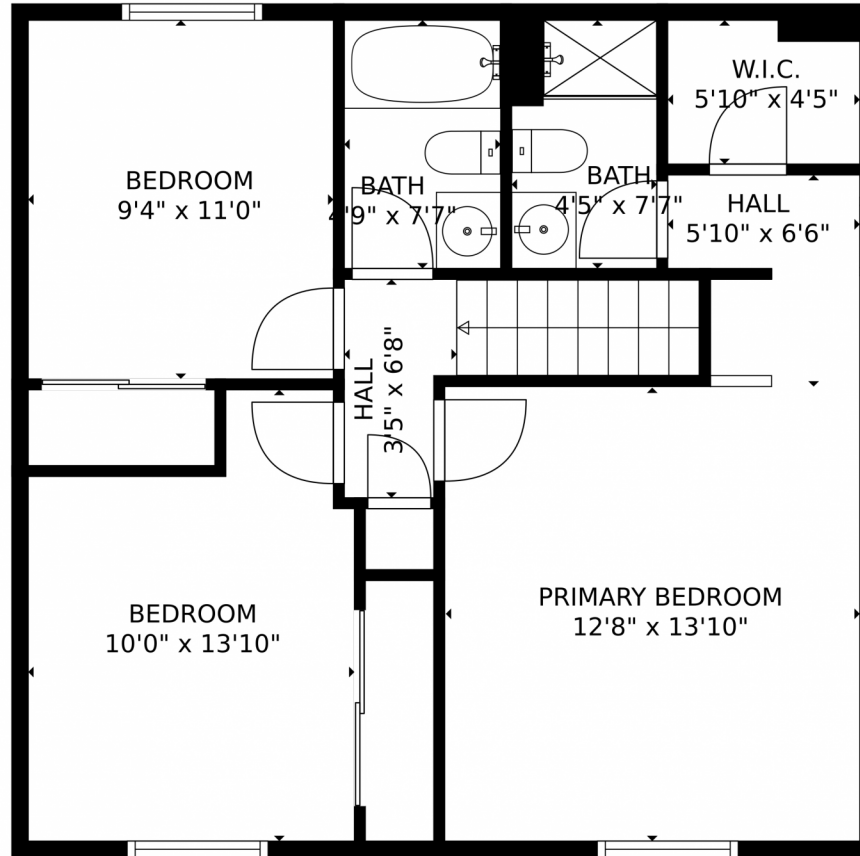
Tatyana Sturm
720-350-5909
tatyana@exitrealtydtc.com
<https://thestorckteam.com>



Scan code
for more
property
details



17055 E Ithaca Circle, Aurora, CO 80013 – Upper Level



GROSS INTERNAL AREA
Below Ground: 0 sq. ft, FLOOR 2: 834 sq. ft, FLOOR 3: 638 sq. ft
EXCLUDED AREAS: UNFINISHED BASEMENT: 553 sq. ft, PORCH: 51 sq. ft, PATIO: 389 sq. ft.
GARAGE: 418 sq. ft, FIREPLACE: 6 sq. ft
TOTAL: 1472 sq. ft
MEASUREMENTS CALCULATED BY V1Photos.com ARE DEEMED HIGHLY RELIABLE BUT NOT GUARANTEED.



Disclaimer: Sizes and Dimensions are Approximate, Actual May Vary.



Tatyana Sturm
720-350-5909
tatyana@exitrealttydc.com
<https://thestorckteam.com>



Scan code
for more
property
details



17055 E Ithaca Circle, Aurora, CO 80013 – All Levels



GROSS INTERNAL AREA
Below Ground: 0 sq. ft, FLOOR 2: 834 sq. ft, FLOOR 3: 638 sq. ft
EXCLUDED AREAS: UNFINISHED BASEMENT: 553 sq. ft, PORCH: 51 sq. ft, PATIO: 389 sq. ft.
GARAGE: 418 sq. ft, FIREPLACE: 6 sq. ft
TOTAL: 1472 sq. ft
MEASUREMENTS CALCULATED BY V1Photos.COM ARE DEEMED HIGHLY RELIABLE BUT NOT GUARANTEED.

Disclaimer: Sizes and Dimensions are Approximate, Actual May Vary.



Tatyana Sturm
720-350-5909
tatyana@exitrealtydtc.com
<https://thestorckteam.com>

