

14535 Elm Street  
Thornton, CO 80602  
COMMUNITY: WILLOW BEND

MLS # IR995892  
PRICE \$794,200

Welcome to 14535 Elm Street in the beautiful community of Willow Bend in Thornton.



14535 Elm Street, Thornton, CO 80602 - Upper Level



14535 Elm Street, Thornton, CO 80602 - Main Level



Single Family 4056 SQFT 4 Beds 4 Baths 3 Car 0.15 Acre

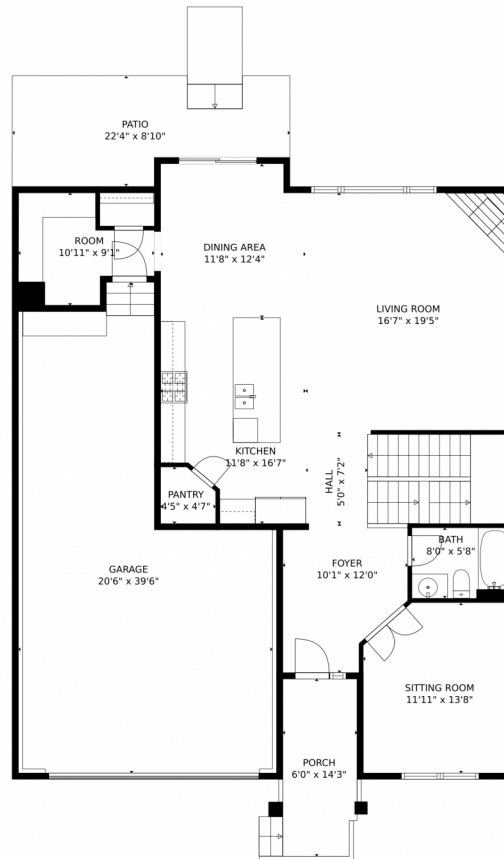
## PROPERTY DETAILS

Welcome to 14535 Elm Street in the beautiful community of Willow Bend in Thornton, CO. This stunning single-family home offers 4 bedrooms, 4 full bathrooms, and 2804 square feet of living space. With a three-car garage and a blank canvas backyard, this property has everything you need to make it your dream home. Located in a desirable neighborhood with access to parks, playgrounds, and walking trails, this property offers both comfort and convenience. Don't miss out on the opportunity to call 14535 Elm Street home. Schedule a showing today!

Ken Schwartz  
303-776-4848  
ken@cowestprop.com



# 14535 Elm Street, Thornton, CO 80602 – Main Level



GROSS INTERNAL AREA  
Below Ground: 0 sq. ft, FLOOR 2: 1186 sq. ft, FLOOR 3: 1545 sq. ft  
EXCLUDED AREAS: UTILITY: 1092 sq. ft, GARAGE: 609 sq. ft, PORCH: 84 sq. ft,  
PATIO: 162 sq. ft, OPEN TO BELOW: 311 sq. ft  
TOTAL: 2731 sq. ft  
MEASUREMENTS CALCULATED BY V1Photos.com ARE DEEMED HIGHLY RELIABLE BUT NOT GUARANTEED.

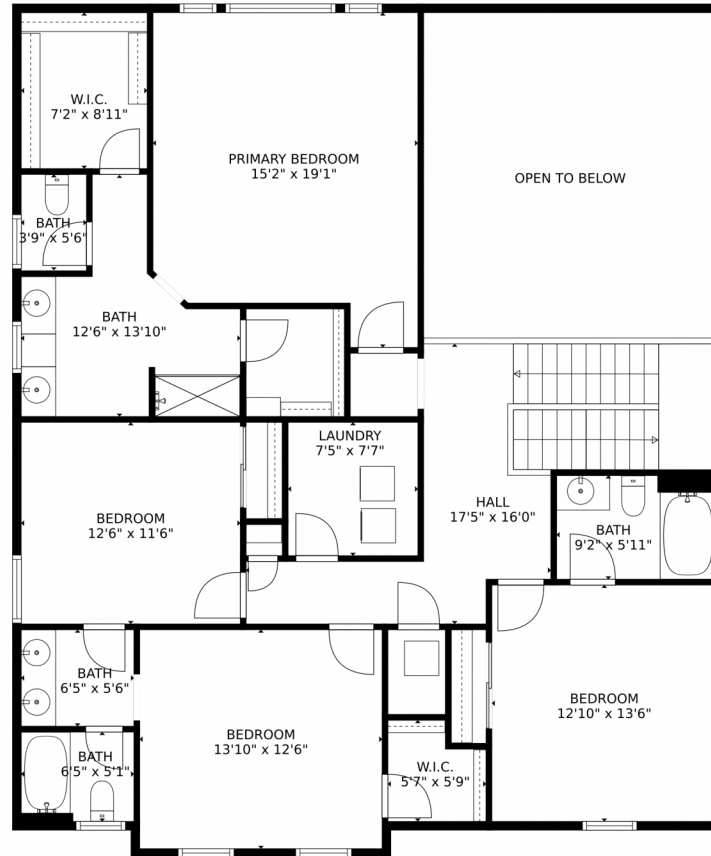


Disclaimer: Sizes and Dimensions are Approximate, Actual May Vary.

Ken Schwartz  
303-776-4848  
ken@cowestprop.com



# 14535 Elm Street, Thornton, CO 80602 – Upper Level



GROSS INTERNAL AREA  
Below Ground: 0 sq. ft, FLOOR 2: 1186 sq. ft, FLOOR 3: 1545 sq. ft  
EXCLUDED AREAS: UTILITY: 1092 sq. ft, GARAGE: 609 sq. ft, PORCH: 84 sq. ft.  
PATIO: 162 sq. ft, OPEN TO BELOW: 311 sq. ft  
TOTAL: 2731 sq. ft  
MEASUREMENTS CALCULATED BY V1Photos.com ARE DEEMED HIGHLY RELIABLE BUT NOT GUARANTEED.



Disclaimer: Sizes and Dimensions are Approximate, Actual May Vary.

Ken Schwartz  
303-776-4848  
ken@cowestprop.com

