



7030 East 46th Avenue Drive
Denver, CO 80216



Commercial



6000 SQFT



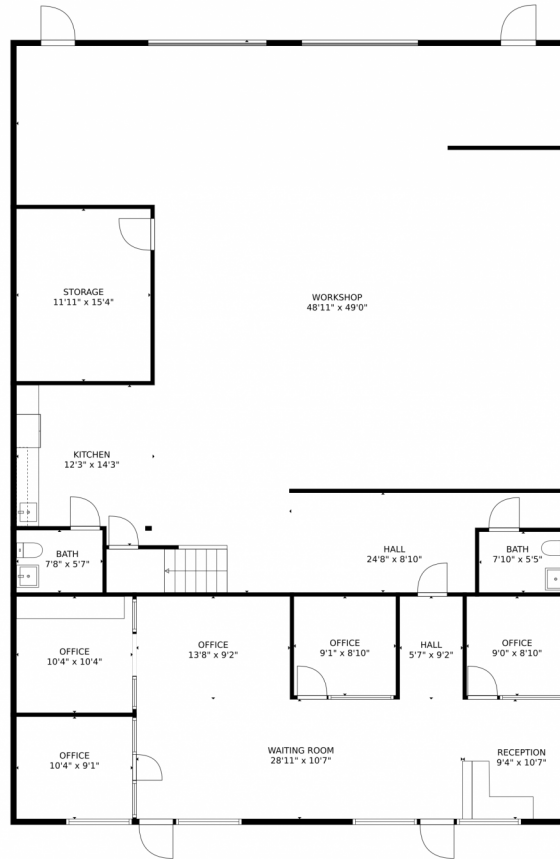
Joe Awad
303-587-8442
Joe@bluriver.net



Scan code
for more
property
details



7030 East 46th Avenue Drive, Denver, CO 80216 – Main Level

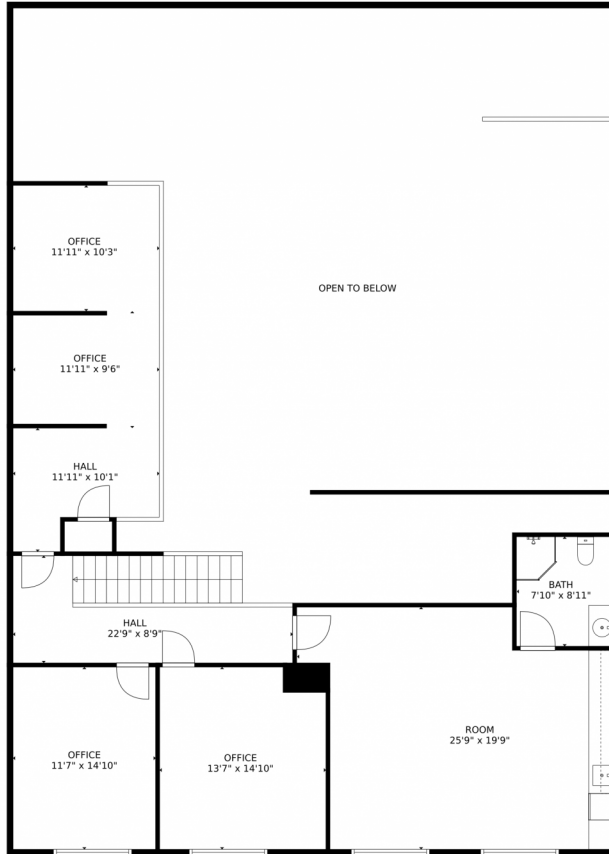


GROSS INTERNAL AREA
FLOOR 1: 1421 sq. ft, FLOOR 2: 1467 sq. ft
EXCLUDED AREAS: STORAGE: 191 sq. ft, WORKSHOP: 1739 sq. ft, OPEN TO BELOW: 1885 sq. ft
TOTAL: 2888 sq. ft
MEASUREMENTS CALCULATED BY V1Photos.COM ARE DEEMED HIGHLY RELIABLE BUT NOT GUARANTEED.



Disclaimer: Sizes and Dimensions are Approximate, Actual May Vary.

7030 East 46th Avenue Drive, Denver, CO 80216 – Upper Level



GROSS INTERNAL AREA
FLOOR 1: 1421 sq. ft, FLOOR 2: 1467 sq. ft
EXCLUDED AREAS: STORAGE: 191 sq. ft, WORKSHOP: 1739 sq. ft, OPEN TO BELOW: 1885 sq. ft
TOTAL: 2888 sq. ft
MEASUREMENTS CALCULATED BY V1Photos.com ARE DEEMED HIGHLY RELIABLE BUT NOT GUARANTEED.



Disclaimer: Sizes and Dimensions are Approximate, Actual May Vary.

7030 East 46th Avenue Drive, Denver, CO 80216 – All Levels



GROSS INTERNAL AREA
FLOOR 1: 1421 sq. ft, FLOOR 2: 1467 sq. ft
EXCLUDED AREAS: STORAGE: 191 sq. ft, WORKSHOP: 1739 sq. ft, OPEN TO BELOW: 1885 sq. ft
TOTAL: 2888 sq. ft
MEASUREMENTS CALCULATED BY V1Photos.COM ARE DEEMED HIGHLY RELIABLE BUT NOT GUARANTEED.



Disclaimer: Sizes and Dimensions are Approximate, Actual May Vary.