



8453 Bed Straw Street
 Parker, CO 80134
 COMMUNITY: Compark

MLS # 8843515
 PRICE \$750,000



8453 Bed Straw Street, Parker, CO 80134 - 2nd Level



Single Family 3229 SQFT 4 Beds 2/1 Baths 2 Car 0.13 Acre

PROPERTY DETAILS

Welcome to this perfect Parker property! Conveniently located near major throughways, a neighborhood park, and trail access. Close to Centennial Airport, major employers, and E470. This 3229 sq. ft., 4-bdrm, 2.5-bath home offers an open floor plan flooded with natural light. The finished basement provides additional living space. The office loft can be converted into a 5th bedroom. Enjoy entertaining on the deck with an extendable awning. The professionally landscaped yard is a serene oasis. New roof, gutters, deck, landscaping, exterior paint, windows, appliances, and major systems. 1 year home warranty included. Don't miss out, schedule your showing today!



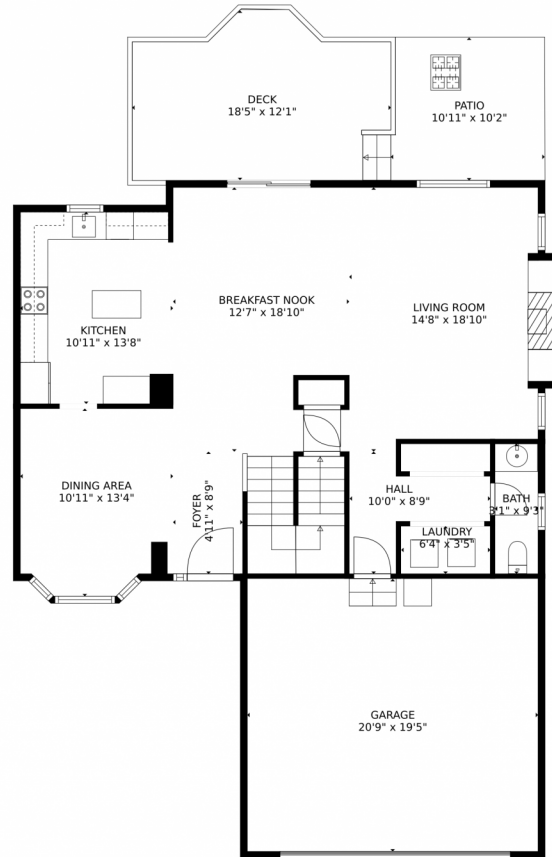
Taryn King
 303-359-1000
 taryn@horseandhearth.com



Scan code
 for more
 property
 details



8453 Bed Straw Street, Parker, CO 80134 – Main Level



GROSS INTERNAL AREA
Below Ground: 778 sq. ft, FLOOR 2: 1017 sq. ft, FLOOR 3: 1072 sq. ft
EXCLUDED AREAS: ELECTRICAL ROOM: 144 sq. ft, GARAGE: 403 sq. ft, PATIO: 110 sq. ft,
DECK: 195 sq. ft, OPEN TO BELOW: 242 sq. ft
TOTAL: 2867 sq. ft
MEASUREMENTS CALCULATED BY V1Photos.COM ARE DEEMED HIGHLY RELIABLE BUT NOT GUARANTEED.



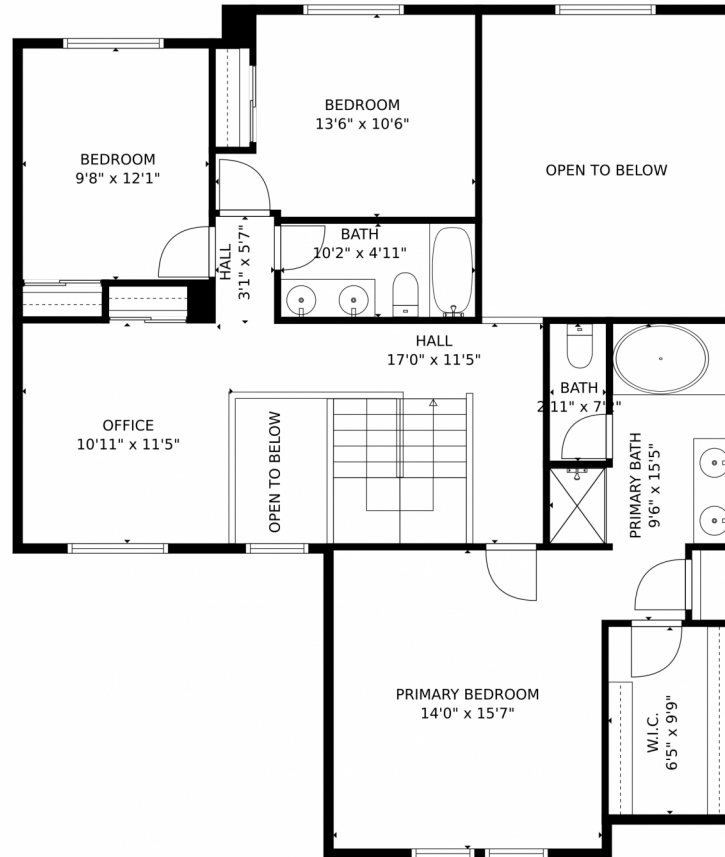
Disclaimer: Sizes and Dimensions are Approximate, Actual May Vary.



Taryn King
303-359-1000
taryn@horseandhearth.com



8453 Bed Straw Street, Parker, CO 80134 – 2nd Level



GROSS INTERNAL AREA
Below Ground: 778 sq. ft, FLOOR 2: 1017 sq. ft, FLOOR 3: 1072 sq. ft
EXCLUDED AREAS: ELECTRICAL ROOM: 144 sq. ft, GARAGE: 403 sq. ft, PATIO: 110 sq. ft,
DECK: 195 sq. ft, OPEN TO BELOW: 242 sq. ft
TOTAL: 2867 sq. ft
MEASUREMENTS CALCULATED BY V1Photos.COM ARE DEEMED HIGHLY RELIABLE BUT NOT GUARANTEED.



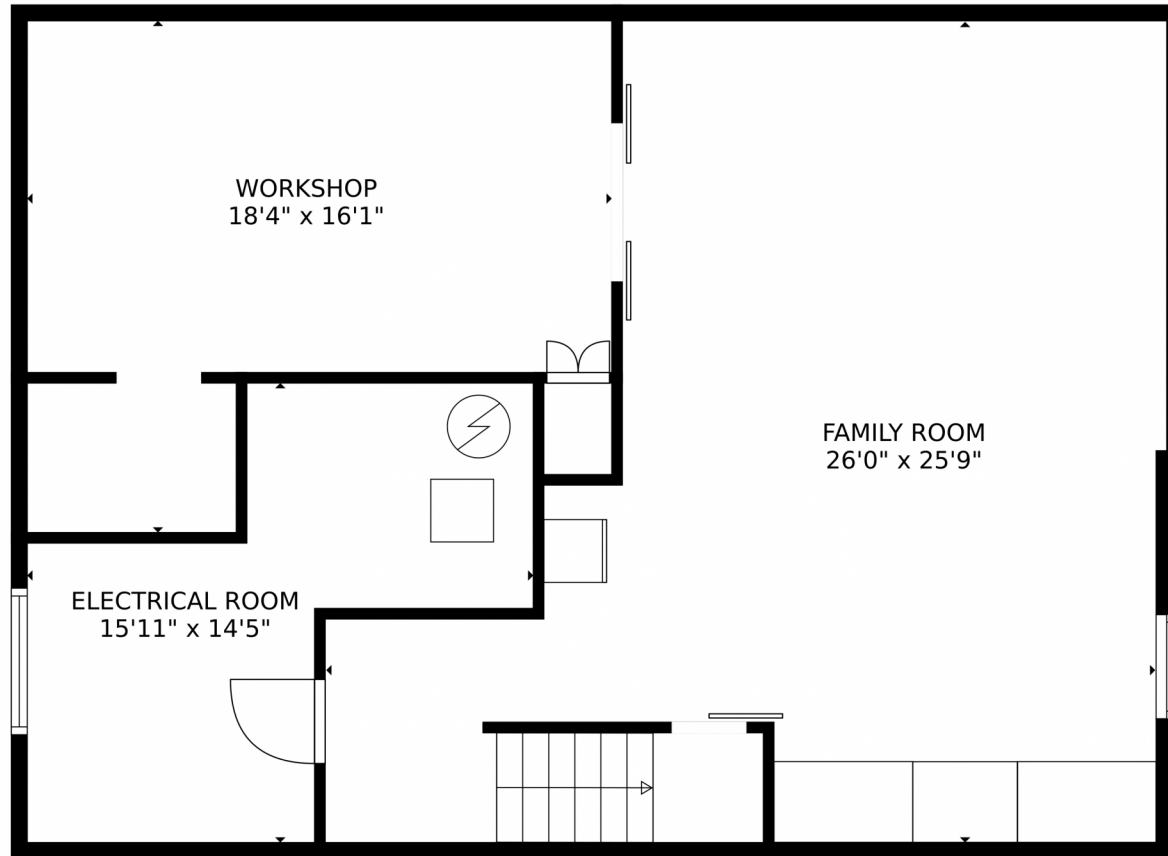
Disclaimer: Sizes and Dimensions are Approximate, Actual May Vary.



Taryn King
303-359-1000
taryn@horseandhearth.com



8453 Bed Straw Street, Parker, CO 80134 – Lower Level



GROSS INTERNAL AREA
Below Ground: 778 sq. ft, FLOOR 2: 1017 sq. ft, FLOOR 3: 1072 sq. ft
EXCLUDED AREAS: ELECTRICAL ROOM: 144 sq. ft, GARAGE: 403 sq. ft, PATIO: 110 sq. ft,
DECK: 195 sq. ft, OPEN TO BELOW: 242 sq. ft
TOTAL: 2867 sq. ft
MEASUREMENTS CALCULATED BY V1Photos.COM ARE DEEMED HIGHLY RELIABLE BUT NOT GUARANTEED.



Disclaimer: Sizes and Dimensions are Approximate, Actual May Vary.



Taryn King
303-359-1000
taryn@horseandhearth.com



8453 Bed Straw Street, Parker, CO 80134 – All Levels



GROSS INTERNAL AREA
Below Ground: 778 sq. ft, FLOOR 2: 1017 sq. ft, FLOOR 3: 1072 sq. ft
EXCLUDED AREAS: ELECTRICAL ROOM: 144 sq. ft, GARAGE: 403 sq. ft, PATIO: 110 sq. ft,
DECK: 195 sq. ft, OPEN TO BELOW: 242 sq. ft
TOTAL: 2867 sq. ft
MEASUREMENTS CALCULATED BY V1Photos.COM ARE DEEMED HIGHLY RELIABLE BUT NOT GUARANTEED.



Disclaimer: Sizes and Dimensions are Approximate, Actual May Vary.



Taryn King
303-359-1000
taryn@horseandhearth.com

