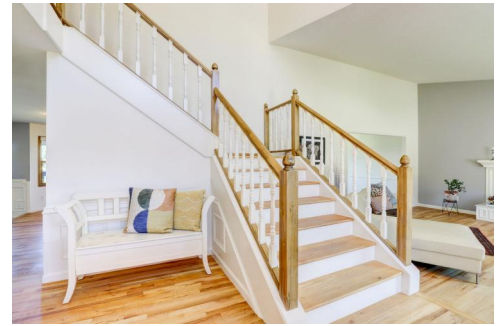




15305 W Maple Avenue
 Golden, CO 80401
 COMMUNITY: Mesa View Estates

MLS # 7916959

PRICE
 \$1,420,000



15305 West Maple Avenue, Golden, CO 80401 - All Levels



 Single Family
  5046 SQFT
  4 Beds
  3 Baths
  3 Car
  0.5 Acre

PROPERTY DETAILS

Rare gem in highly desirable Mesa View Estates neighborhood. Mid-century modern style home with access to Green Mountain Open Space. Spectacular views from every room. Huge primary suite on second floor. Bright remodeled kitchen with stainless steel appliances. Formal living room with gas fireplace. Formal dining with picturesque view. Chef's dream kitchen with quartz countertops. Flex room for office or fourth bedroom. Main floor guest bathroom with large shower. 3-car garage with plenty of storage. Unfinished walkout basement with fireplace. 0.5 acre lot with two-tiered backyard. Central A/C, attic fan, new hot water heater, furnace, and whole house humidifier. Minutes from Golden, Downtown Denver, Red Rocks Amphitheater, and mountains. Call Maria Sorzano for a private showing.



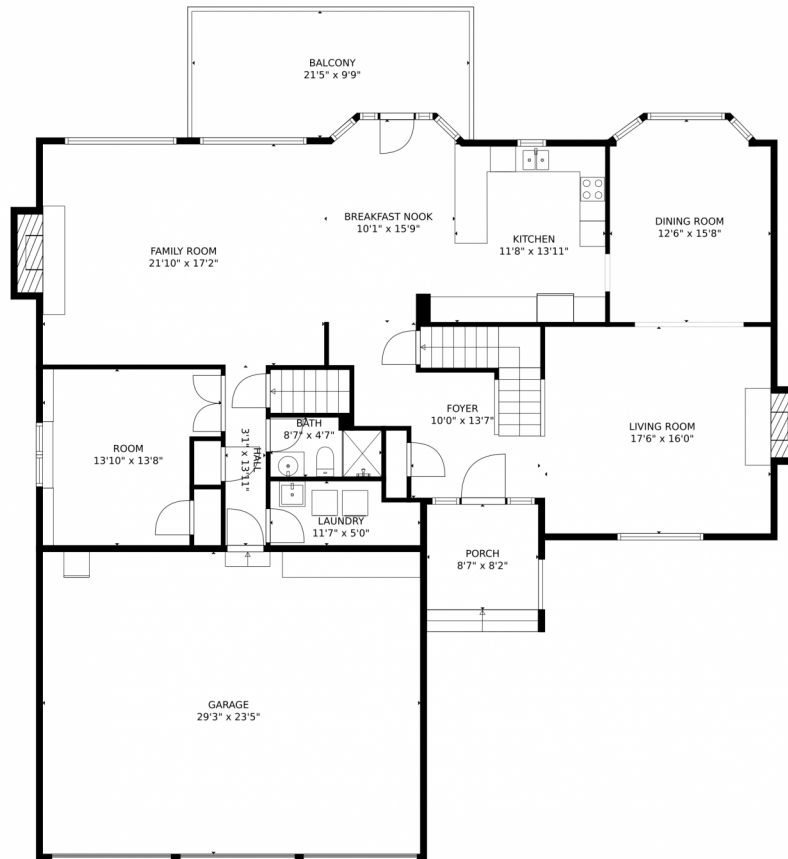
Maria Sorzano
 303-995-3901
 mariasorzano@msn.com

Scan code for more property details





15305 W Maple Avenue, Golden, CO 80401 – Main Level



GROSS INTERNAL AREA
Below Ground: 0 sq. ft, FLOOR 2: 1734 sq. ft, FLOOR 3: 1234 sq. ft
EXCLUDED AREAS: UNFINISHED BASEMENT: 1671 sq. ft, FIREPLACE: 26 sq. ft, GARAGE: 684 sq. ft,
PORCH: 70 sq. ft, BALCONY: 209 sq. ft, OPEN TO BELOW: 351 sq. ft
TOTAL: 2968 sq. ft
MEASUREMENTS CALCULATED BY V1Photos.com ARE DEEMED HIGHLY RELIABLE BUT NOT GUARANTEED.



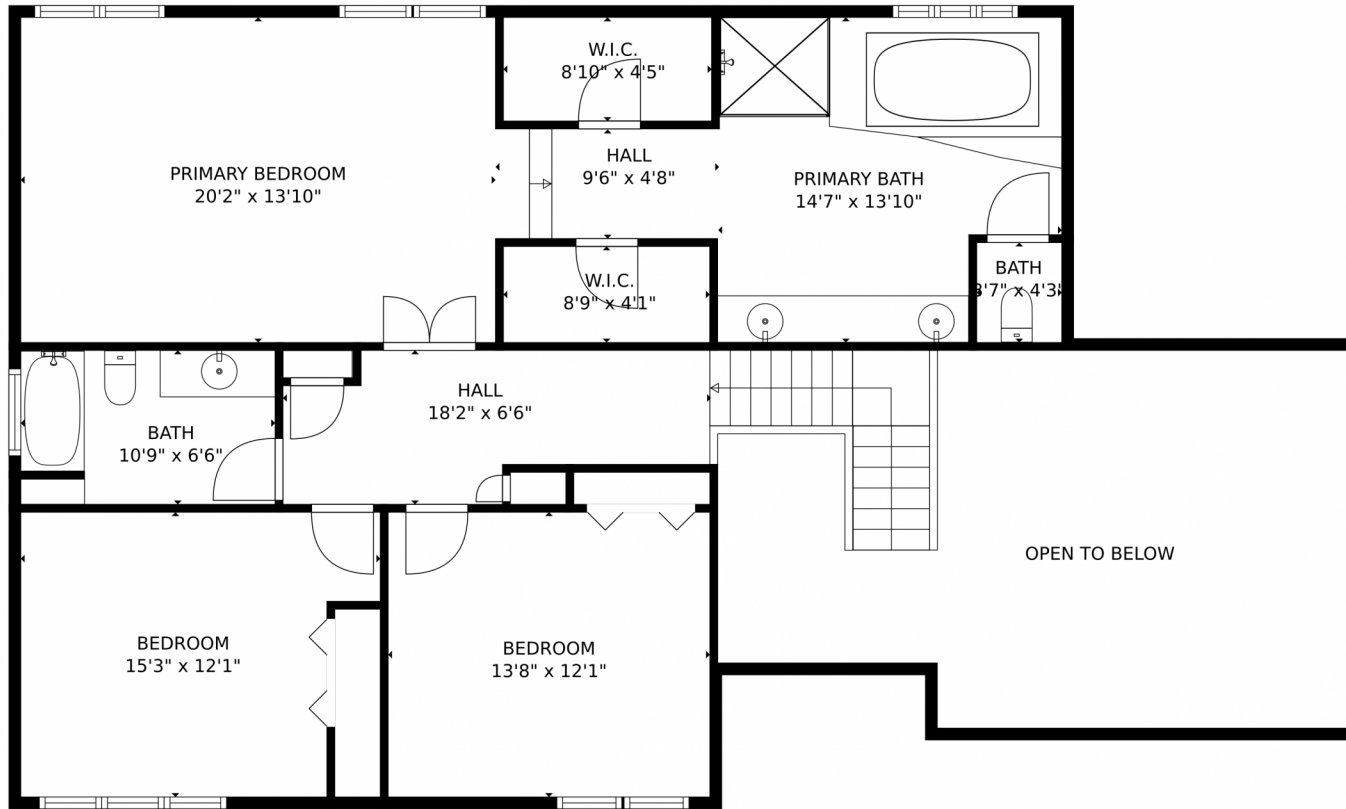
Disclaimer: Sizes and Dimensions are Approximate, Actual May Vary.



Maria Sorzano
303-995-3901
mariasorzano@msn.com



15305 W Maple Avenue, Golden, CO 80401 — Upper Level



GROSS INTERNAL AREA
Below Ground: 0 sq. ft, FLOOR 2: 1734 sq. ft, FLOOR 3: 1234 sq. ft
EXCLUDED AREAS: UNFINISHED BASEMENT: 1671 sq. ft, FIREPLACE: 26 sq. ft, GARAGE: 684 sq. ft,
PORCH: 70 sq. ft, BALCONY: 209 sq. ft, OPEN TO BELOW: 351 sq. ft
TOTAL: 2968 sq. ft
MEASUREMENTS CALCULATED BY V1Photos.com ARE DEEMED HIGHLY RELIABLE BUT NOT GUARANTEED.

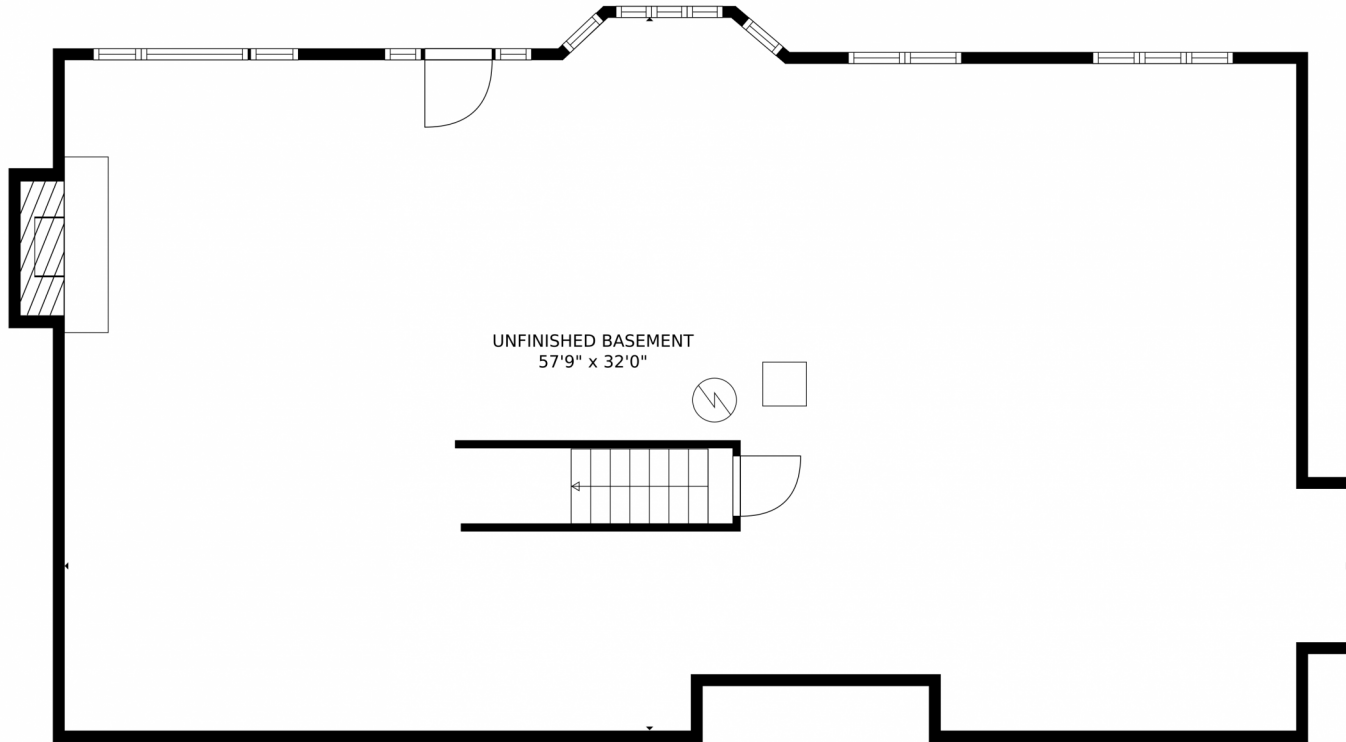


Disclaimer: Sizes and Dimensions are Approximate, Actual May Vary.



Maria Sorzano
303-995-3901
mariasorzano@msn.com





GROSS INTERNAL AREA
Below Ground: 0 sq. ft, FLOOR 2: 1734 sq. ft, FLOOR 3: 1234 sq. ft
EXCLUDED AREAS: UNFINISHED BASEMENT: 1671 sq. ft, FIREPLACE: 26 sq. ft, GARAGE: 684 sq. ft,
PORCH: 70 sq. ft, BALCONY: 209 sq. ft, OPEN TO BELOW: 351 sq. ft
TOTAL: 2968 sq. ft
MEASUREMENTS CALCULATED BY V1Photos.com ARE DEEMED HIGHLY RELIABLE BUT NOT GUARANTEED.



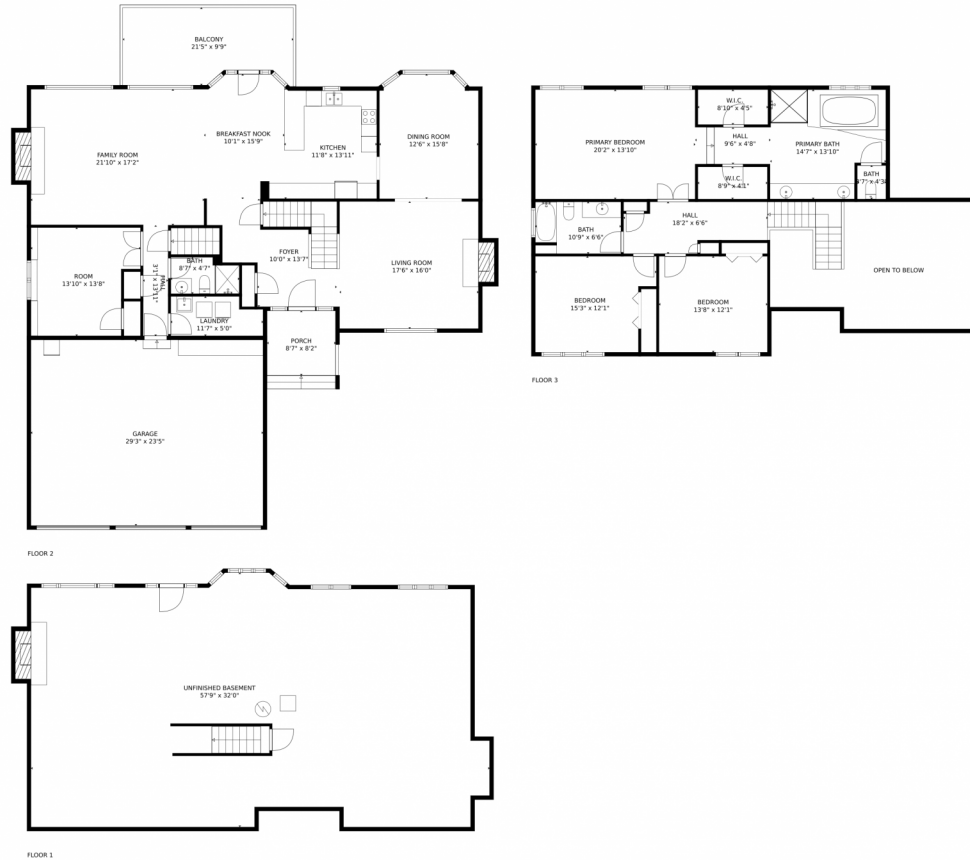
Disclaimer: Sizes and Dimensions are Approximate, Actual May Vary.



Maria Sorzano
303-995-3901
mariasorzano@msn.com



15305 W Maple Avenue, Golden, CO 80401 — All Levels



GROSS INTERNAL AREA
Below Ground: 0 sq. ft, FLOOR 2: 1734 sq. ft, FLOOR 3: 1234 sq. ft
EXCLUDED AREAS: UNFINISHED BASEMENT: 1671 sq. ft, FIREPLACE: 26 sq. ft, GARAGE: 684 sq. ft,
PORCH: 70 sq. ft, BALCONY: 209 sq. ft, OPEN TO BELOW: 351 sq. ft
TOTAL: 2968 sq. ft
MEASUREMENTS CALCULATED BY V1Photos.com ARE DEEMED HIGHLY RELIABLE BUT NOT GUARANTEED.



Disclaimer: Sizes and Dimensions are Approximate, Actual May Vary.



Maria Sorzano
303-995-3901
mariasorzano@msn.com

