



2055 Northwest 45th Avenue
Coconut Creek, FL 33066



2055 Northwest 45th Avenue, Coconut Creek, FL 33066 - 1st_floor_2055_northwest_45th_avenue



Townhouse 1540 SQFT

PROPERTY DETAILS

Welcome to this beautiful townhouse at 2055 NW 45th Ave in Coconut Creek, FL. With 1540 sqft of living space, it offers a comfortable and modern home. The well-maintained yard has a garage for parking. The central AC ensures a cool environment. Enjoy the patio and its beautiful surroundings. The fenced outdoor pool is perfect for swimming and lounging. The kitchen features brown cabinets, light countertops, hardwood floors, and black appliances. The bathroom has a vanity, mirror, and spacious shower. This townhouse is the perfect place to call home. Don't miss out!



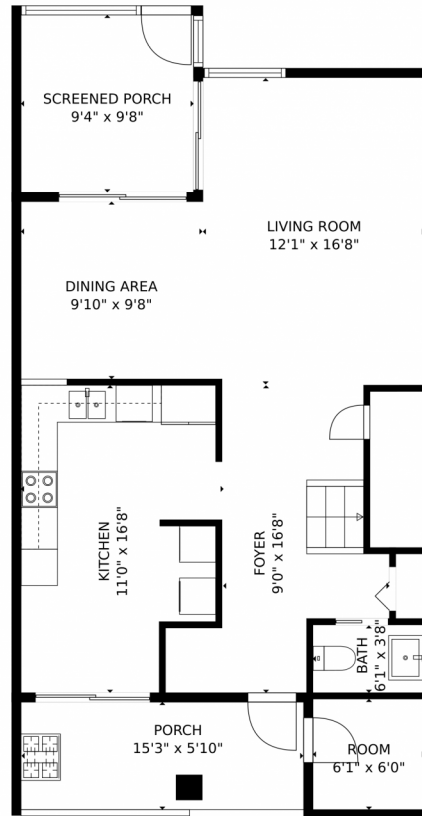
Rachael Barach
954-815-1418
rachael@rachaelbarach.com
<https://www.therachaelbarachgroup.com/>



Scan code
for more
property
details



2055 Northwest 45th Avenue, Coconut Creek, FL 33066 —
1st_floor_2055_northwest_45th_avenue_coconut_creek



GROSS INTERNAL AREA
FLOOR 1: 705 sq. ft, FLOOR 2: 767 sq. ft
EXCLUDED AREAS: SCREENED PORCH: 90 sq. ft, PORCH: 90 sq. ft
TOTAL: 1472 sq. ft
MEASUREMENTS CALCULATED BY V1Photos.com ARE DEEMED HIGHLY RELIABLE BUT NOT GUARANTEED.



Disclaimer: Sizes and Dimensions are Approximate, Actual May Vary.



Rachael Barach

954-815-1418

rachael@rachaelbarach.com

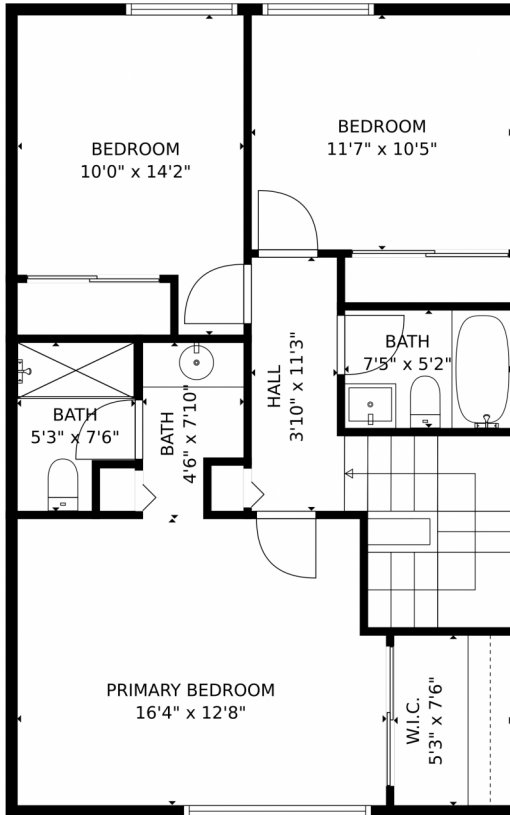
<https://www.therachaelbarachgroup.com/>



Scan code
for more
property
details



2055 Northwest 45th Avenue, Coconut Creek, FL 33066 —
2nd_floor_2055_northwest_45th_avenue_coconut_creek



GROSS INTERNAL AREA
FLOOR 1: 705 sq. ft, FLOOR 2: 767 sq. ft
EXCLUDED AREAS: SCREENED PORCH: 90 sq. ft, PORCH: 90 sq. ft
TOTAL: 1472 sq. ft
MEASUREMENTS CALCULATED BY V1PHOTOS.COM ARE DEEMED HIGHLY RELIABLE BUT NOT GUARANTEED.



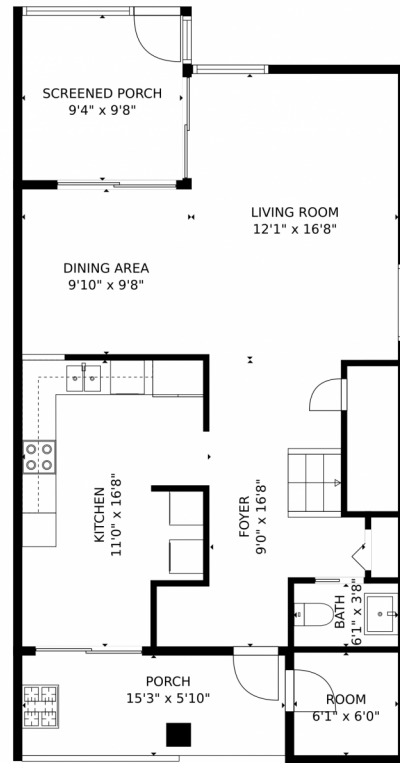
Disclaimer: Sizes and Dimensions are Approximate, Actual May Vary.



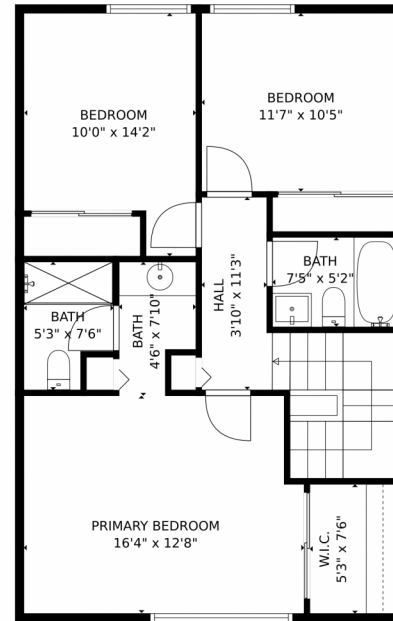
Rachael Barach
954-815-1418
rachael@rachaelbarach.com
<https://www.therachaelbarachgroup.com/>



2055 Northwest 45th Avenue, Coconut Creek, FL 33066 —
all_floors_2055_northwest_45th_avenue_coconut_cree



FLOOR 1



FLOOR 2

GROSS INTERNAL AREA
FLOOR 1: 705 sq. ft, FLOOR 2: 767 sq. ft
EXCLUDED AREAS: SCREENED PORCH: 90 sq. ft, PORCH: 90 sq. ft
TOTAL: 1472 sq. ft
MEASUREMENTS CALCULATED BY V1PHOTOS.COM ARE DEEMED HIGHLY RELIABLE BUT NOT GUARANTEED.



Disclaimer: Sizes and Dimensions are Approximate, Actual May Vary.



Rachael Barach
954-815-1418
rachael@rachaelbarach.com
<https://www.therachaelbarachgroup.com/>

