




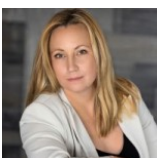
 Single Family

 2222 SQFT

 5 Beds

 3 Baths

 2 Car



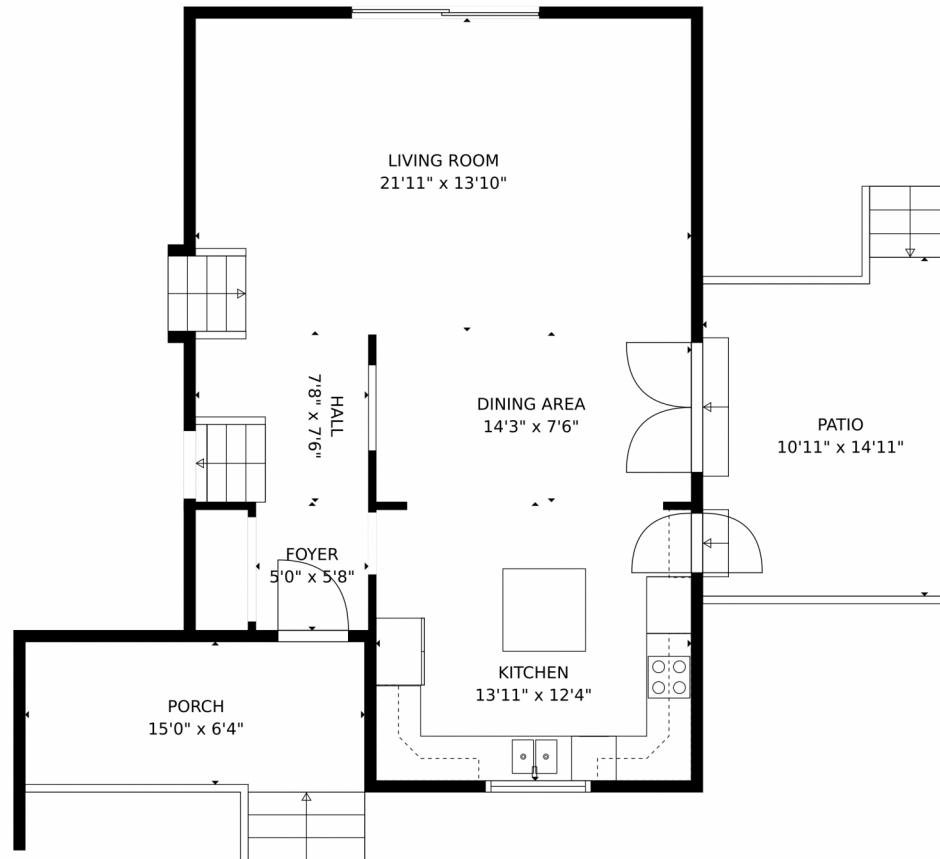
Lauren Weiss
720-485-1500
lauren@laurenweiss.com
<https://www.laurenweiss.com>



Scan code
for more
property
details



7131 E Walsh Place, Denver, CO 80224 – Main Level



GROSS INTERNAL AREA
Below Ground: 599 sq. ft. FLOOR 2: 505 sq. ft. FLOOR 3: 687 sq. ft. FLOOR 4: 822 sq. ft.
EXCLUDED AREAS: ELECTRICAL ROOM: 66 sq. ft. PATIO: 395 sq. ft. GARAGE: 454 sq. ft.
FIREPLACE: 4 sq. ft. PORCH: 116 sq. ft.
TOTAL: 2613 sq. ft.
MEASUREMENTS CALCULATED BY V1Photos.COM ARE DEEMED HIGHLY RELIABLE BUT NOT GUARANTEED.



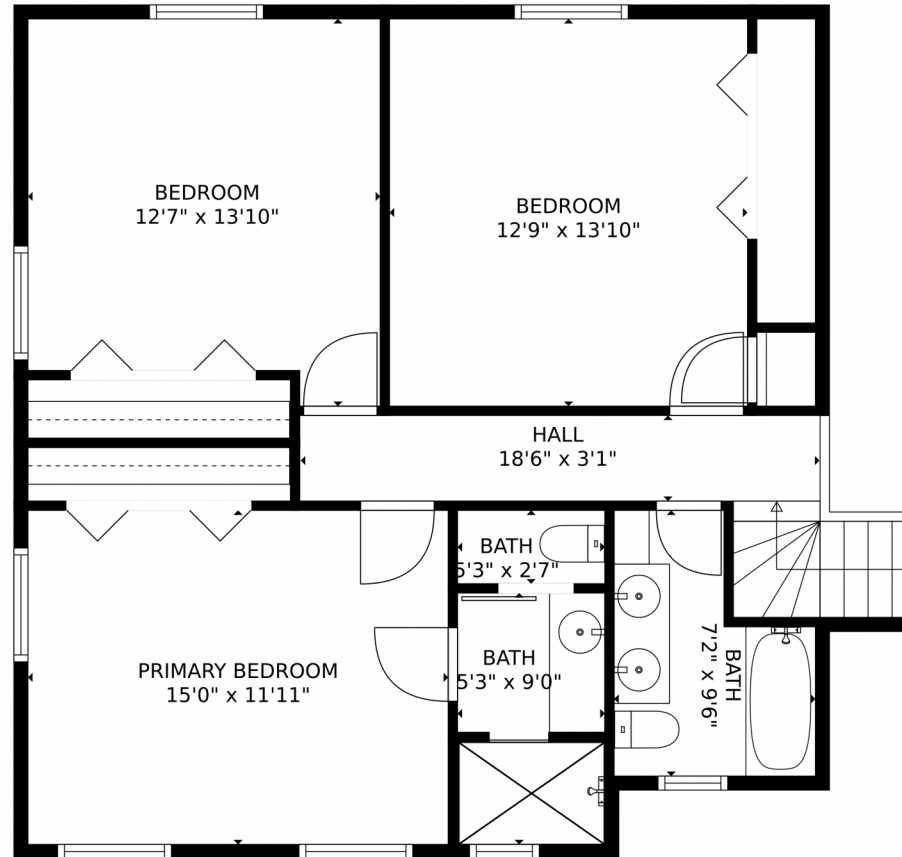
Disclaimer: Sizes and Dimensions are Approximate, Actual May Vary.



Lauren Weiss
720-485-1500
lauren@laurenweiss.com
<https://www.laurenweiss.com>



7131 E Walsh Place, Denver, CO 80224 – Upper Level



GROSS INTERNAL AREA
Below Ground: 599 sq. ft. FLOOR 2: 505 sq. ft. FLOOR 3: 687 sq. ft. FLOOR 4: 822 sq. ft.
EXCLUDED AREAS: ELECTRICAL ROOM: 66 sq. ft. PATIO: 395 sq. ft. GARAGE: 454 sq. ft.
FIREPLACE: 4 sq. ft. PORCH: 116 sq. ft.
TOTAL: 2613 sq. ft.
MEASUREMENTS CALCULATED BY V1Photos.com ARE DEEMED HIGHLY RELIABLE BUT NOT GUARANTEED.



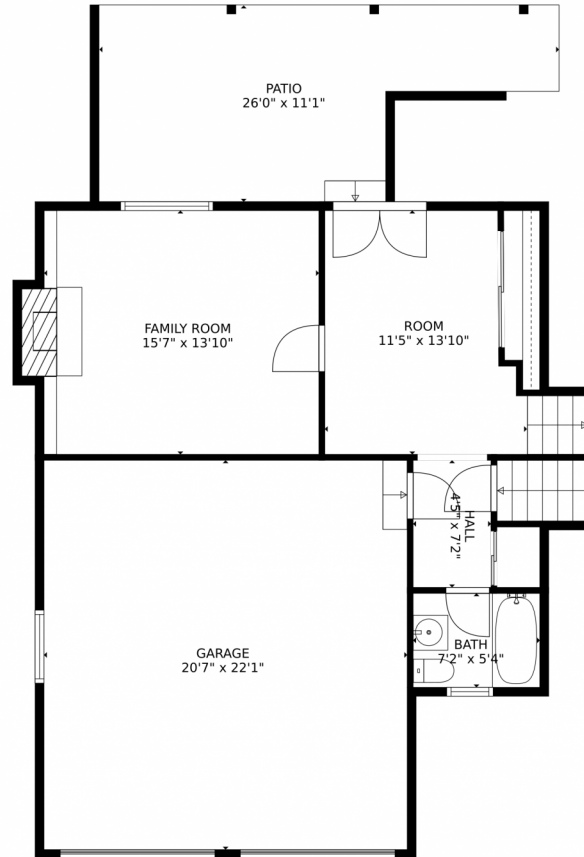
Disclaimer: Sizes and Dimensions are Approximate, Actual May Vary.



Lauren Weiss
720-485-1500
lauren@laurenweiss.com
<https://www.laurenweiss.com>



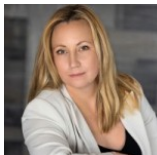
7131 E Walsh Place, Denver, CO 80224 – Lower Level



GROSS INTERNAL AREA
Below Ground: 599 sq. ft, FLOOR 2: 505 sq. ft, FLOOR 3: 687 sq. ft, FLOOR 4: 822 sq. ft
EXCLUDED AREAS: ELECTRICAL ROOM: 66 sq. ft, PATIO: 395 sq. ft, GARAGE: 454 sq. ft,
FIREPLACE: 4 sq. ft, PORCH: 116 sq. ft
TOTAL: 2613 sq. ft
MEASUREMENTS CALCULATED BY V1Photos.com ARE DEEMED HIGHLY RELIABLE BUT NOT GUARANTEED.



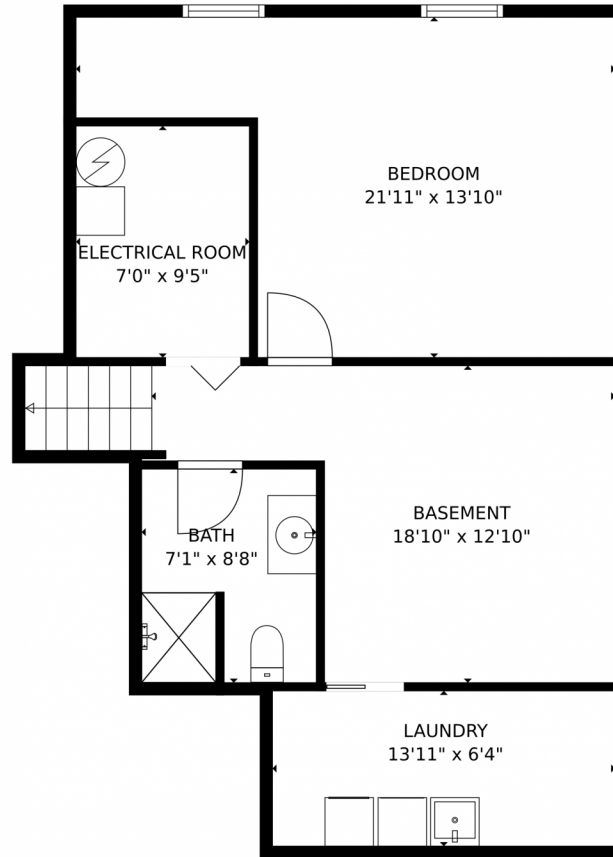
Disclaimer: Sizes and Dimensions are Approximate, Actual May Vary.



Lauren Weiss
720-485-1500
lauren@laurenweiss.com
<https://www.laurenweiss.com>



7131 E Walsh Place, Denver, CO 80224 – Basement



GROSS INTERNAL AREA
Below Ground: 599 sq. ft, FLOOR 2: 505 sq. ft, FLOOR 3: 687 sq. ft, FLOOR 4: 822 sq. ft
EXCLUDED AREAS: ELECTRICAL ROOM: 66 sq. ft, PATIO: 395 sq. ft, GARAGE: 454 sq. ft,
FIREPLACE: 4 sq. ft, PORCH: 116 sq. ft
TOTAL: 2613 sq. ft
MEASUREMENTS CALCULATED BY V1Photos.com ARE DEEMED HIGHLY RELIABLE BUT NOT GUARANTEED.



Disclaimer: Sizes and Dimensions are Approximate, Actual May Vary.



Lauren Weiss
720-485-1500
lauren@laurenweiss.com
<https://www.laurenweiss.com>



Scan code
for more
property
details

7131 E Walsh Place, Denver, CO 80224 – All Levels



GROSS INTERNAL AREA
Below Ground: 599 sq. ft, FLOOR 2: 505 sq. ft, FLOOR 3: 687 sq. ft, FLOOR 4: 822 sq. ft
EXCLUDED AREAS: ELECTRICAL ROOM: 66 sq. ft, PATIO: 395 sq. ft, GARAGE: 454 sq. ft,
FIREPLACE: 4 sq. ft, PORCH: 116 sq. ft
TOTAL: 2613 sq. ft
MEASUREMENTS CALCULATED BY V1Photos.COM ARE DEEMED HIGHLY RELIABLE BUT NOT GUARANTEED.



Disclaimer: Sizes and Dimensions are Approximate, Actual May Vary.



Lauren Weiss
720-485-1500
lauren@laurenweiss.com
<https://www.laurenweiss.com>

