



6188 Dapplegray Street
 Parker, CO 80134
 COMMUNITY: Stone Creek Ranch



6188 Dapplegray Street, Parker, CO 80134 - Basement



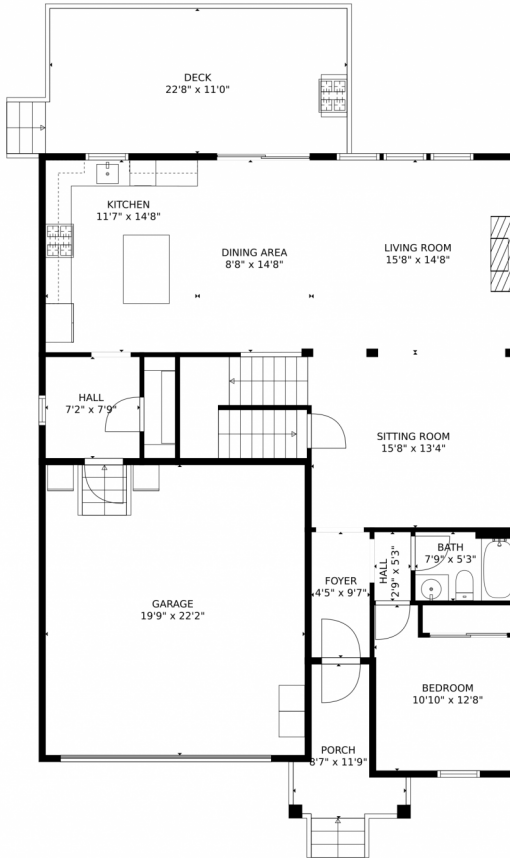
Single Family
 2745 SQFT
 5 Beds
 3 Baths
 2 Car
 0.23 Acre



Lauren Christmas
 720-312-2514
 lauren.christmas@comcast.net
<https://FreshColoradoListings.com>



6188 Dapplegray Street, Parker, CO 80134 – Main Level



GROSS INTERNAL AREA
Below Ground: 0 sq. ft, FLOOR 2: 1147 sq. ft, FLOOR 3: 1378 sq. ft
EXCLUDED AREAS: UNFINISHED BASEMENT: 869 sq. ft, GARAGE: 438 sq. ft, PORCH: 77 sq. ft,
DECK: 264 sq. ft
TOTAL: 2525 sq. ft
MEASUREMENTS CALCULATED BY V1Photos.com ARE DEEMED HIGHLY RELIABLE BUT NOT GUARANTEED.



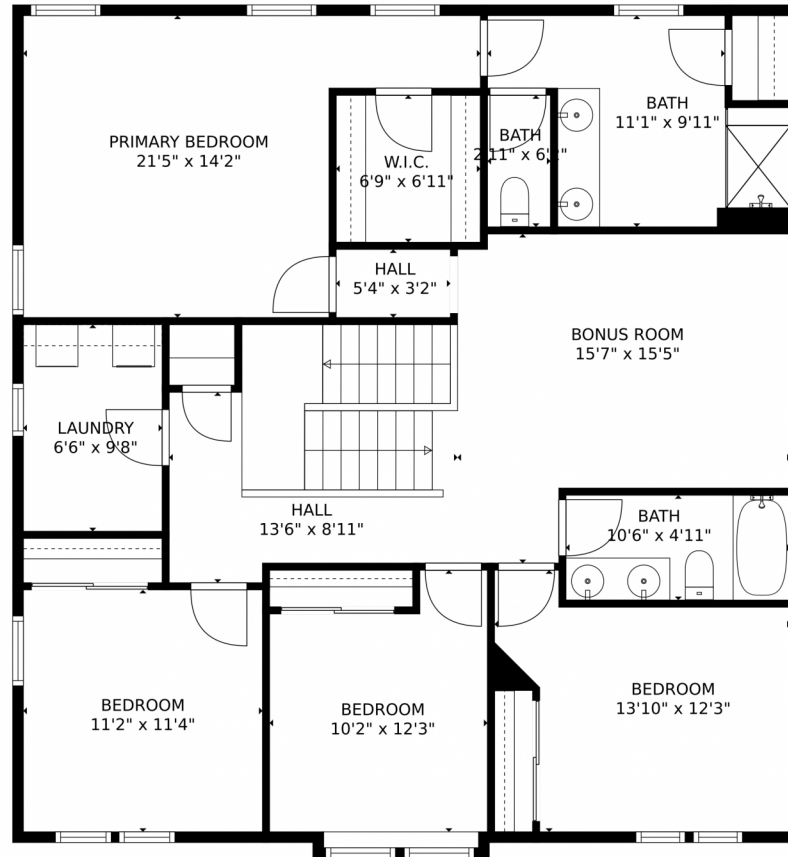
Disclaimer: Sizes and Dimensions are Approximate, Actual May Vary.



Lauren Christmas
720-312-2514
lauren.christmas@comcast.net
<https://FreshColoradoListings.com>



6188 Dapplegray Street, Parker, CO 80134 – Second Level



GROSS INTERNAL AREA
Below Ground: 0 sq. ft, FLOOR 2: 1147 sq. ft, FLOOR 3: 1378 sq. ft
EXCLUDED AREAS: UNFINISHED BASEMENT: 869 sq. ft, GARAGE: 438 sq. ft, PORCH: 77 sq. ft,
DECK: 264 sq. ft
TOTAL: 2525 sq. ft
MEASUREMENTS CALCULATED BY V1Photos.COM ARE DEEMED HIGHLY RELIABLE BUT NOT GUARANTEED.

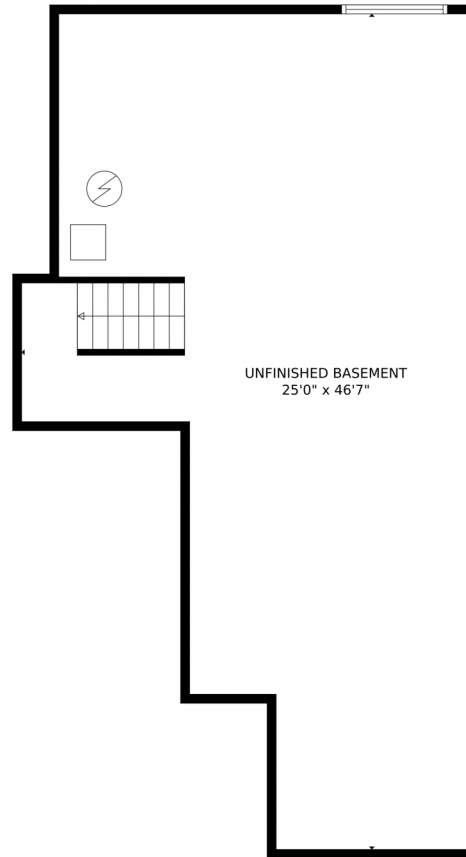
Disclaimer: Sizes and Dimensions are Approximate, Actual May Vary.



Lauren Christmas
720-312-2514
lauren.christmas@comcast.net
<https://FreshColoradoListings.com>



Scan code
for more
property
details



GROSS INTERNAL AREA
Below Ground: 0 sq. ft, FLOOR 2: 1147 sq. ft, FLOOR 3: 1378 sq. ft
EXCLUDED AREAS: UNFINISHED BASEMENT: 869 sq. ft, GARAGE: 438 sq. ft, PORCH: 77 sq. ft,
DECK: 264 sq. ft
TOTAL: 2525 sq. ft
MEASUREMENTS CALCULATED BY V1Photos.com ARE DEEMED HIGHLY RELIABLE BUT NOT GUARANTEED.



Disclaimer: Sizes and Dimensions are Approximate, Actual May Vary.



Lauren Christmas
720-312-2514
lauren.christmas@comcast.net
<https://FreshColoradoListings.com>



6188 Dapplegray Street, Parker, CO 80134 – All Levels



GROSS INTERNAL AREA
Below Ground: 0 sq. ft, FLOOR 2: 1147 sq. ft, FLOOR 3: 1378 sq. ft
EXCLUDED AREAS: UNFINISHED BASEMENT: 869 sq. ft, GARAGE: 438 sq. ft, PORCH: 77 sq. ft,
DECK: 264 sq. ft
TOTAL: 2525 sq. ft
MEASUREMENTS CALCULATED BY V1Photos.com ARE DEEMED HIGHLY RELIABLE BUT NOT GUARANTEED.



Disclaimer: Sizes and Dimensions are Approximate, Actual May Vary.



Lauren Christmas
720-312-2514
lauren.christmas@comcast.net
<https://FreshColoradoListings.com>



Scan code
for more
property
details

