



8479 Rabbitbrush Way, Parker, CO 80134 - All Levels



Single Family

807 SQFT

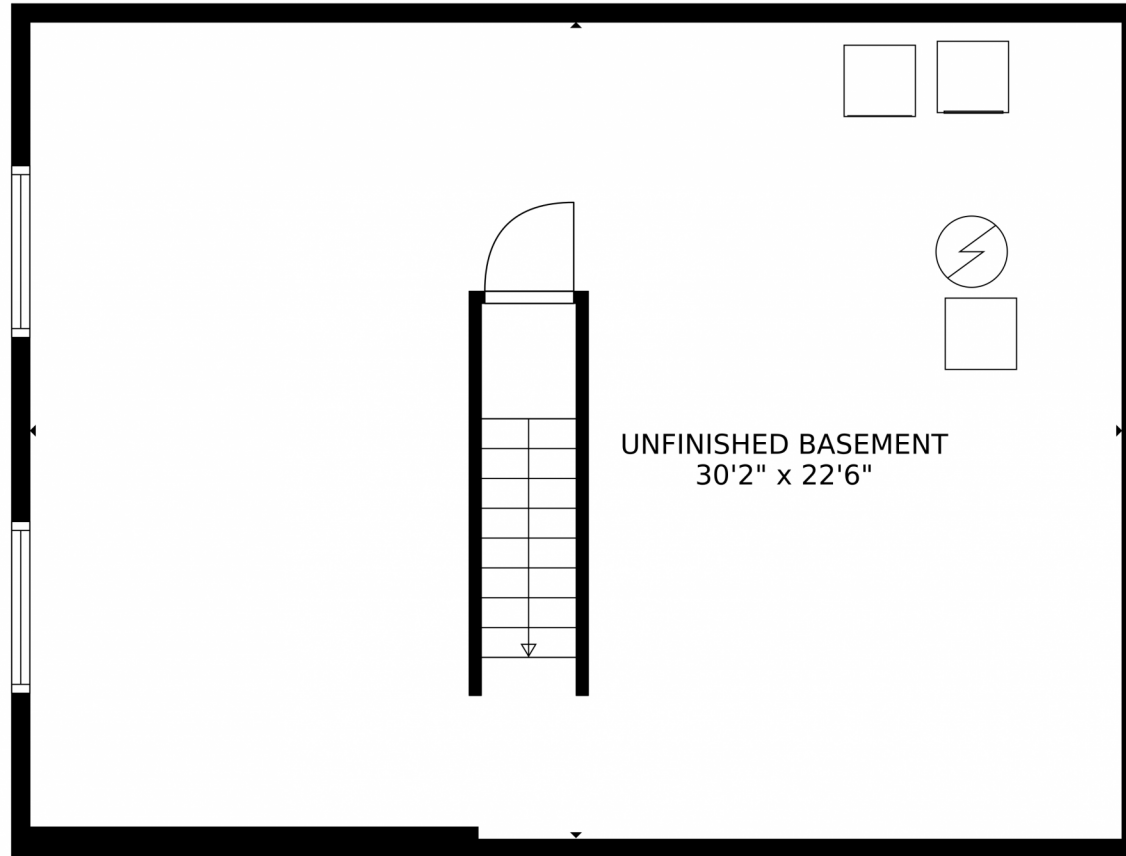
2 Beds

1 Baths



Taylor Haas
 303-665-7368
 taylorh@coloradorpm.com
<https://www.coloradorpm.com/available-rental-properties-denver>





GROSS INTERNAL AREA
Below Ground: 0 sq. ft, FLOOR 2: 712 sq. ft
EXCLUDED AREAS: UNFINISHED BASEMENT: 681 sq. ft, GARAGE: 342 sq. ft, PORCH: 43 sq. ft,
FIREPLACE: 7 sq. ft
TOTAL: 712 sq. ft
MEASUREMENTS CALCULATED BY V1Photos.com ARE DEEMED HIGHLY RELIABLE BUT NOT GUARANTEED.



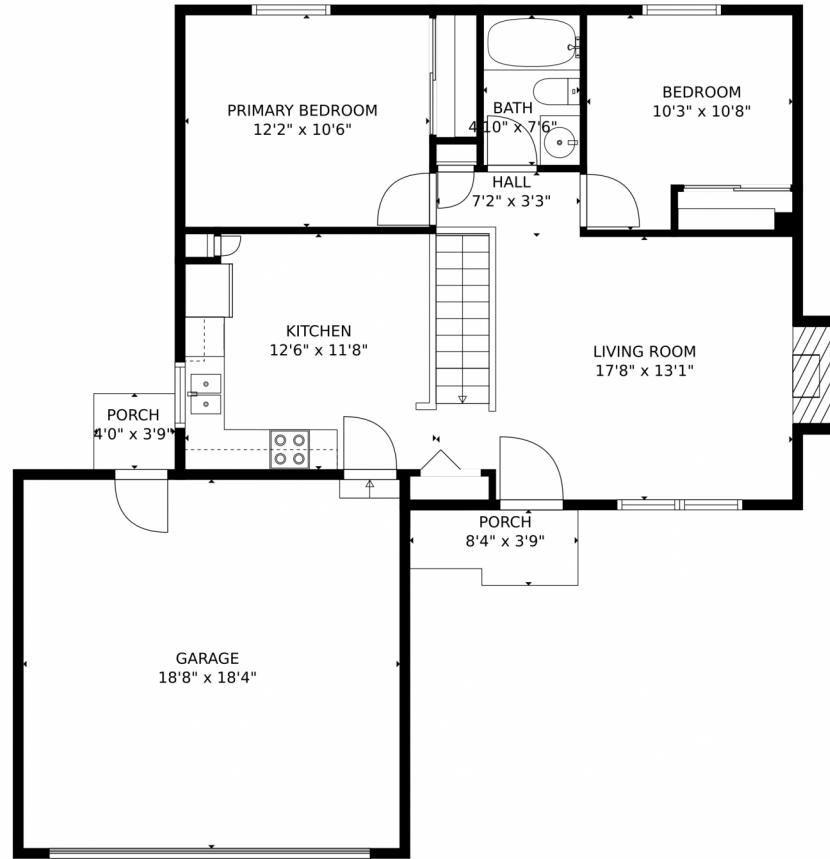
Disclaimer: Sizes and Dimensions are Approximate, Actual May Vary.



Taylor Haas
303-665-7368
taylorh@coloradorpm.com
<https://www.coloradorpm.com/available-rental-properties-denver>



8479 Rabbitbrush Way, Parker, CO 80134 – Main Level



GROSS INTERNAL AREA
Below Ground: 0 sq. ft, FLOOR 2: 712 sq. ft
EXCLUDED AREAS: UNFINISHED BASEMENT: 681 sq. ft, GARAGE: 342 sq. ft, PORCH: 43 sq. ft,
FIREPLACE: 7 sq. ft
TOTAL: 712 sq. ft
MEASUREMENTS CALCULATED BY V1Photos.COM ARE DEEMED HIGHLY RELIABLE BUT NOT GUARANTEED.



Disclaimer: Sizes and Dimensions are Approximate, Actual May Vary.



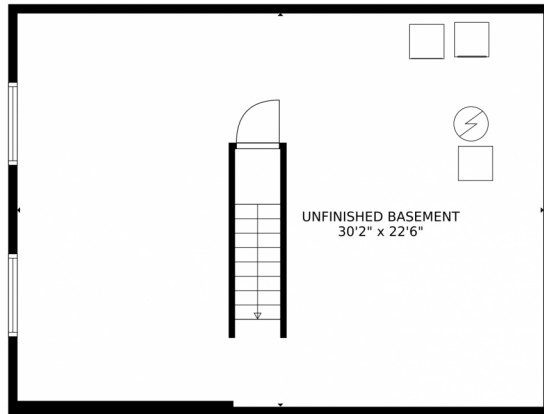
Taylor Haas
303-665-7368
taylorh@coloradorpm.com
<https://www.coloradorpm.com/available-rental-properties-denver>



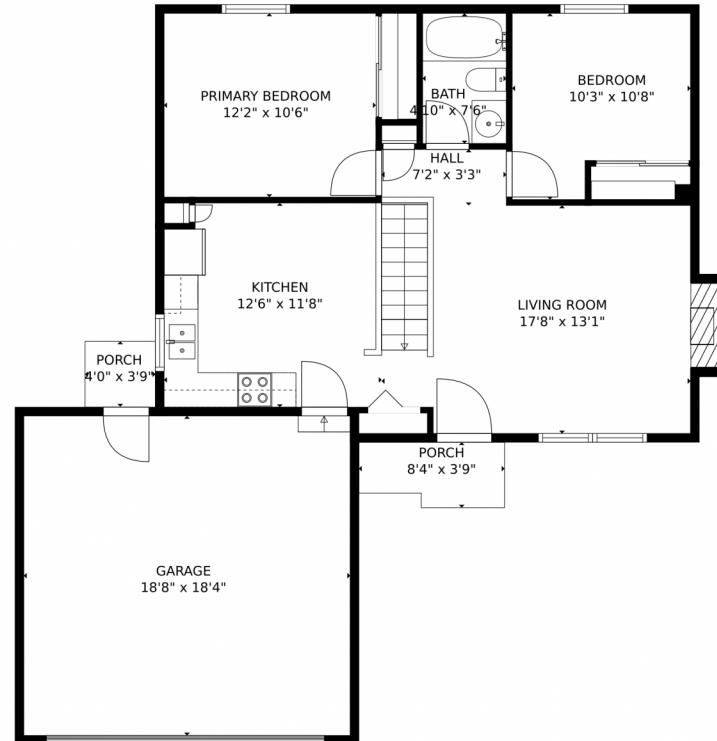
Scan code
for more
property
details



8479 Rabbitbrush Way, Parker, CO 80134 – All Levels



FLOOR 1



FLOOR 2

GROSS INTERNAL AREA
Below Ground: 0 sq. ft, FLOOR 2: 712 sq. ft
EXCLUDED AREAS: UNFINISHED BASEMENT: 681 sq. ft, GARAGE: 342 sq. ft, PORCH: 43 sq. ft,
FIREPLACE: 7 sq. ft
TOTAL: 712 sq. ft
MEASUREMENTS CALCULATED BY V1Photos.com ARE DEEMED HIGHLY RELIABLE BUT NOT GUARANTEED.



Disclaimer: Sizes and Dimensions are Approximate, Actual May Vary.



Taylor Haas
303-665-7368
taylorh@coloradorpm.com
<https://www.coloradorpm.com/available-rental-properties-denver>



Scan code
for more
property
details

