



Other



2200 SQFT



2 Beds



2 Baths

PROPERTY DETAILS

Welcome to your new home at 239 Lower Matecumbe Road in Key Largo, FL! This charming single-family property is filled with joy and laughter. Step inside to find a beautiful wood-floored dining area and a chef's paradise kitchen with stainless steel appliances. The living room is the heart of the home, perfect for gathering with loved ones. The primary bedroom offers a cozy oasis for peaceful nights. Additional features include a laundry room, garage, patio with a gazebo, and a dock with water views. Enjoy the fenced yard and nearby amenities in this fantastic community.



Kim Marie Perry

561-402-9489

kimsellsu@outlook.com

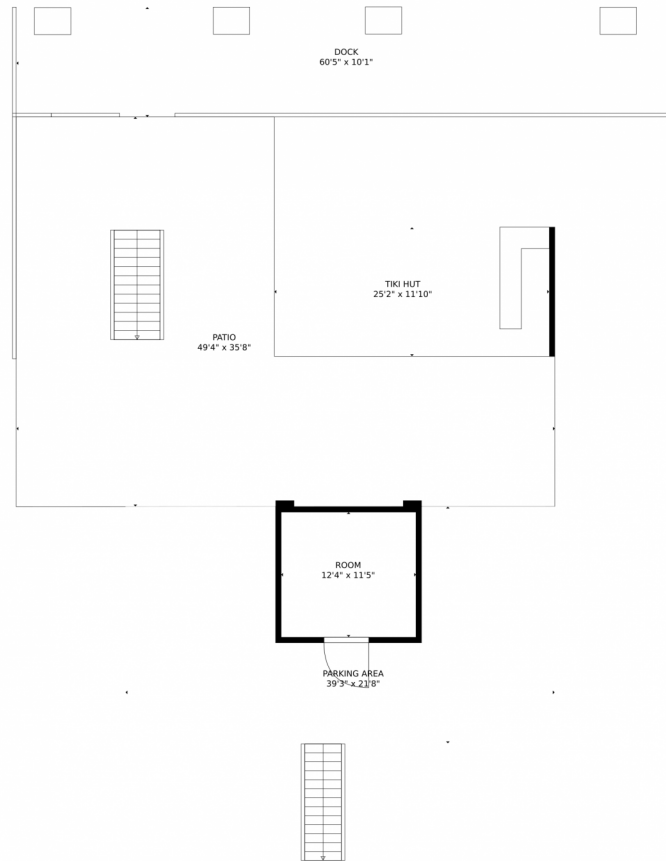
<https://kimsellsu.baronrealestateco.com/>



Scan code
for more
property
details



239 Lower Matecumbe Road, Key Largo, FL 33037 – Ground Floor



GROSS INTERNAL AREA
Below Ground: 142 sq. ft. FLOOR 2: 897 sq. ft.
EXCLUDED AREAS: PARKING AREA: 687 sq. ft. PATIO: 1197 sq. ft. TIKI HUT: 298 sq. ft.
SCREENED PORCH: 217 sq. ft. PORCH: 98 sq. ft. DECK: 20 sq. ft.
TOTAL: 1039 sq. ft.
MEASUREMENTS CALCULATED BY V1Photos.COM ARE DEEMED HIGHLY RELIABLE BUT NOT GUARANTEED.



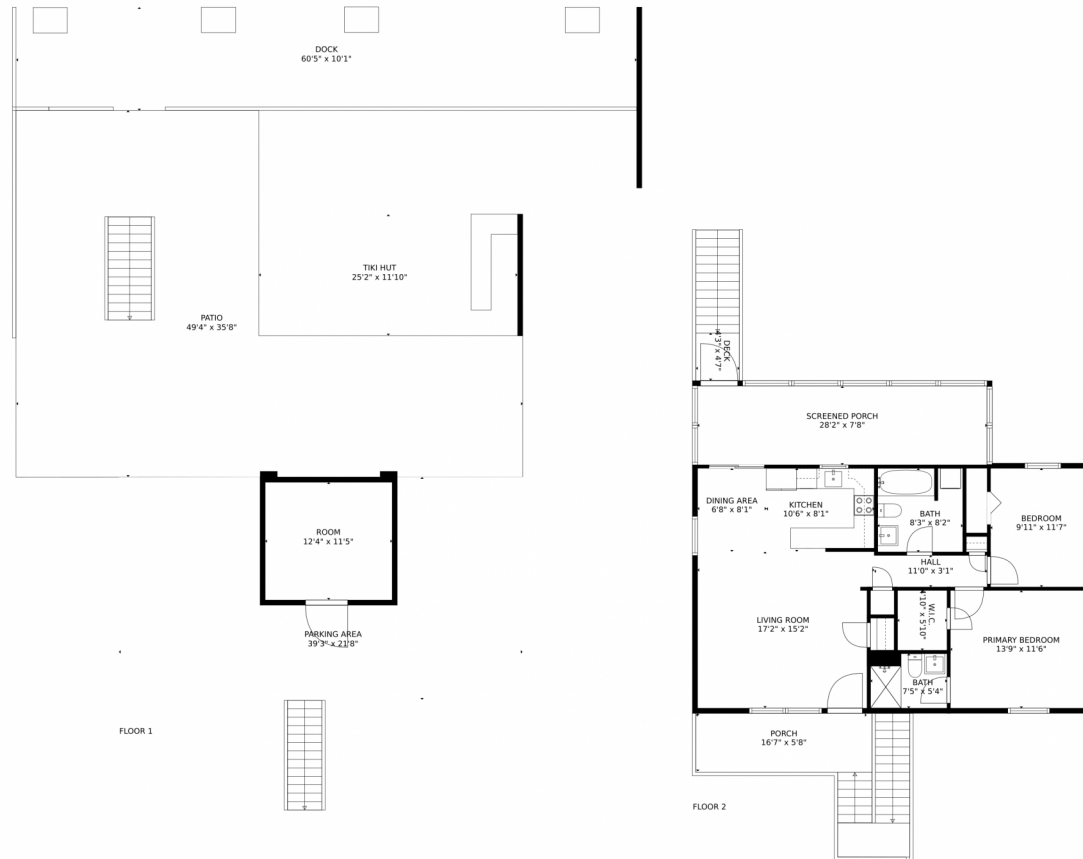
Disclaimer: Sizes and Dimensions are Approximate, Actual May Vary.



Kim Marie Perry
561-402-9489
kimsellsu@outlook.com
<https://kimsellsu.baronrealestateco.com/>



239 Lower Matecumbe Road, Key Largo, FL 33037 – All Levels



GROSS INTERNAL AREA
Below Ground: 142 sq. ft, FLOOR 2: 897 sq. ft.
EXCLUDED AREAS: PARKING AREA: 687 sq. ft, PATIO: 1197 sq. ft, TIKI HUT: 298 sq. ft,
SCREENED PORCH: 217 sq. ft, PORCH: 98 sq. ft, DECK: 20 sq. ft
TOTAL: 1039 sq. ft
MEASUREMENTS CALCULATED BY V1Photos.com ARE DEEMED HIGHLY RELIABLE BUT NOT GUARANTEED.



Disclaimer: Sizes and Dimensions are Approximate, Actual May Vary.



Kim Marie Perry
561-402-9489
kimsellsu@outlook.com
<https://kimsellsu.baronrealestateco.com/>

