




1681 South Idalia Cir. #D, Aurora, CO 80017 - Second Floor



 Single Family

 1036 SQFT

 2 Beds

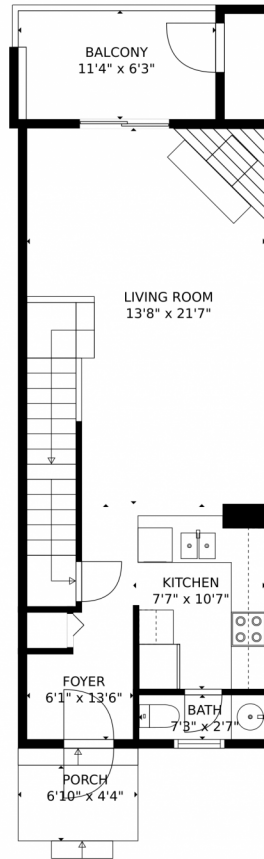
 2 Baths



**Taylor Haas**  
 303-665-7368  
 taylorh@coloradorpm.com  
<https://www.coloradorpm.com/available-rental-properties-denver>



1681 South Idalia Cir. #D, Aurora, CO 80017 – Main Floor



GROSS INTERNAL AREA  
Below Ground: 0 sq. ft, FLOOR 2: 495 sq. ft, FLOOR 3: 510 sq. ft  
EXCLUDED AREAS: UNFINISHED BASEMENT: 464 sq. ft, BALCONY: 69 sq. ft, PORCH: 37 sq. ft  
TOTAL: 1005 sq. ft  
MEASUREMENTS CALCULATED BY V1Photos.com ARE DEEMED HIGHLY RELIABLE BUT NOT GUARANTEED.



Disclaimer: Sizes and Dimensions are Approximate, Actual May Vary.



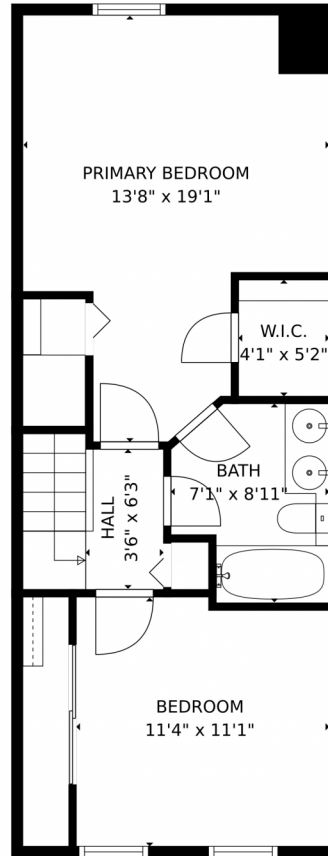
**Taylor Haas**  
303-665-7368  
taylorh@coloradorpm.com  
<https://www.coloradorpm.com/available-rental-properties-denver>



Scan code  
for more  
property  
details



1681 South Idalia Cir. #D, Aurora, CO 80017 – Second Floor



GROSS INTERNAL AREA  
Below Ground: 0 sq. ft, FLOOR 2: 495 sq. ft, FLOOR 3: 510 sq. ft  
EXCLUDED AREAS: UNFINISHED BASEMENT: 464 sq. ft, BALCONY: 69 sq. ft, PORCH: 37 sq. ft  
TOTAL: 1005 sq. ft  
MEASUREMENTS CALCULATED BY V1Photos.com ARE DEEMED HIGHLY RELIABLE BUT NOT GUARANTEED.



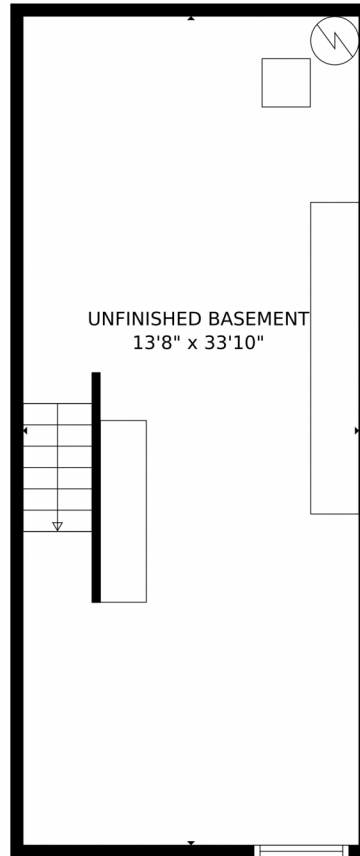
Disclaimer: Sizes and Dimensions are Approximate, Actual May Vary.



**Taylor Haas**  
303-665-7368  
taylorh@coloradorpm.com  
<https://www.coloradorpm.com/available-rental-properties-denver>



1681 South Idalia Cir. #D, Aurora, CO 80017 – Basement



GROSS INTERNAL AREA  
Below Ground: 0 sq. ft, FLOOR 2: 495 sq. ft, FLOOR 3: 510 sq. ft  
EXCLUDED AREAS: UNFINISHED BASEMENT: 464 sq. ft, BALCONY: 69 sq. ft, PORCH: 37 sq. ft  
TOTAL: 1005 sq. ft  
MEASUREMENTS CALCULATED BY V1Photos.com ARE DEEMED HIGHLY RELIABLE BUT NOT GUARANTEED.



Disclaimer: Sizes and Dimensions are Approximate, Actual May Vary.



**Taylor Haas**

303-665-7368

taylorh@coloradorpm.com

<https://www.coloradorpm.com/available-rental-properties-denver>

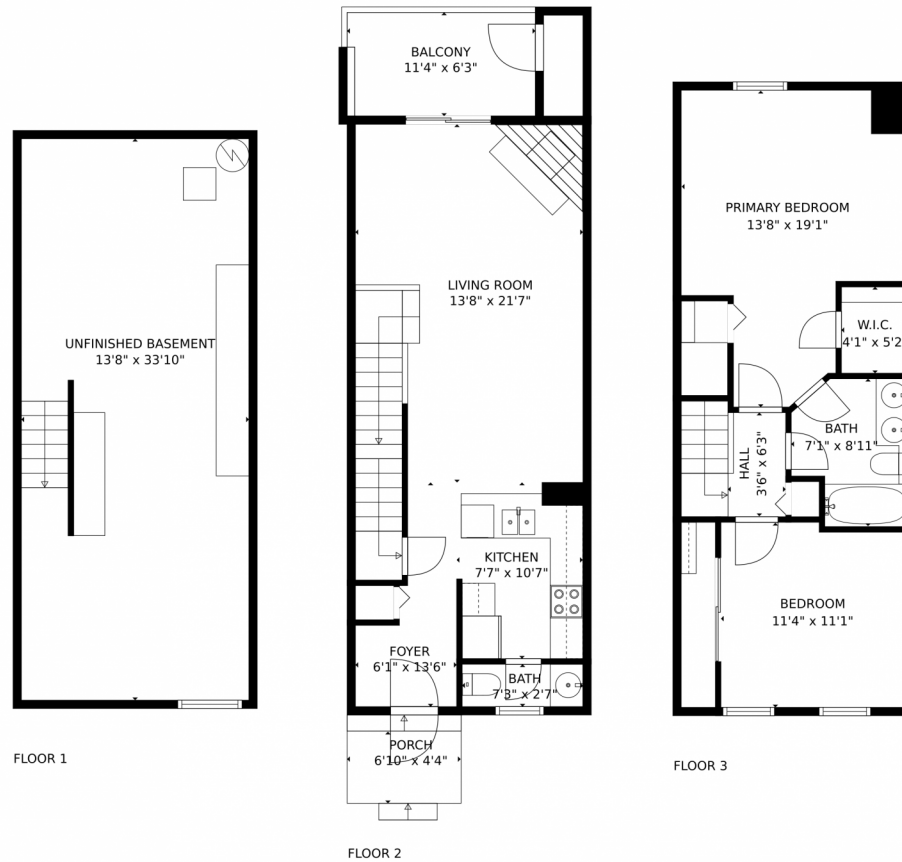


Scan code  
for more  
property  
details





# 1681 South Idalia Cir. #D, Aurora, CO 80017 – All Floors



GROSS INTERNAL AREA  
Below Ground: 0 sq. ft, FLOOR 2: 495 sq. ft, FLOOR 3: 510 sq. ft  
EXCLUDED AREAS: UNFINISHED BASEMENT: 464 sq. ft, BALCONY: 69 sq. ft, PORCH: 37 sq. ft  
TOTAL: 1005 sq. ft  
MEASUREMENTS CALCULATED BY V1Photos.com ARE DEEMED HIGHLY RELIABLE BUT NOT GUARANTEED.



Disclaimer: Sizes and Dimensions are Approximate, Actual May Vary.



**Taylor Haas**  
303-665-7368  
taylorh@coloradorm.com  
<https://www.coloradorm.com/available-rental-properties-denver>



Scan code  
for more  
property  
details

