



8354 E Easter Court
Centennial, CO 80112
COMMUNITY: Hunters Hill

MLS # 5697275
PRICE \$750,000



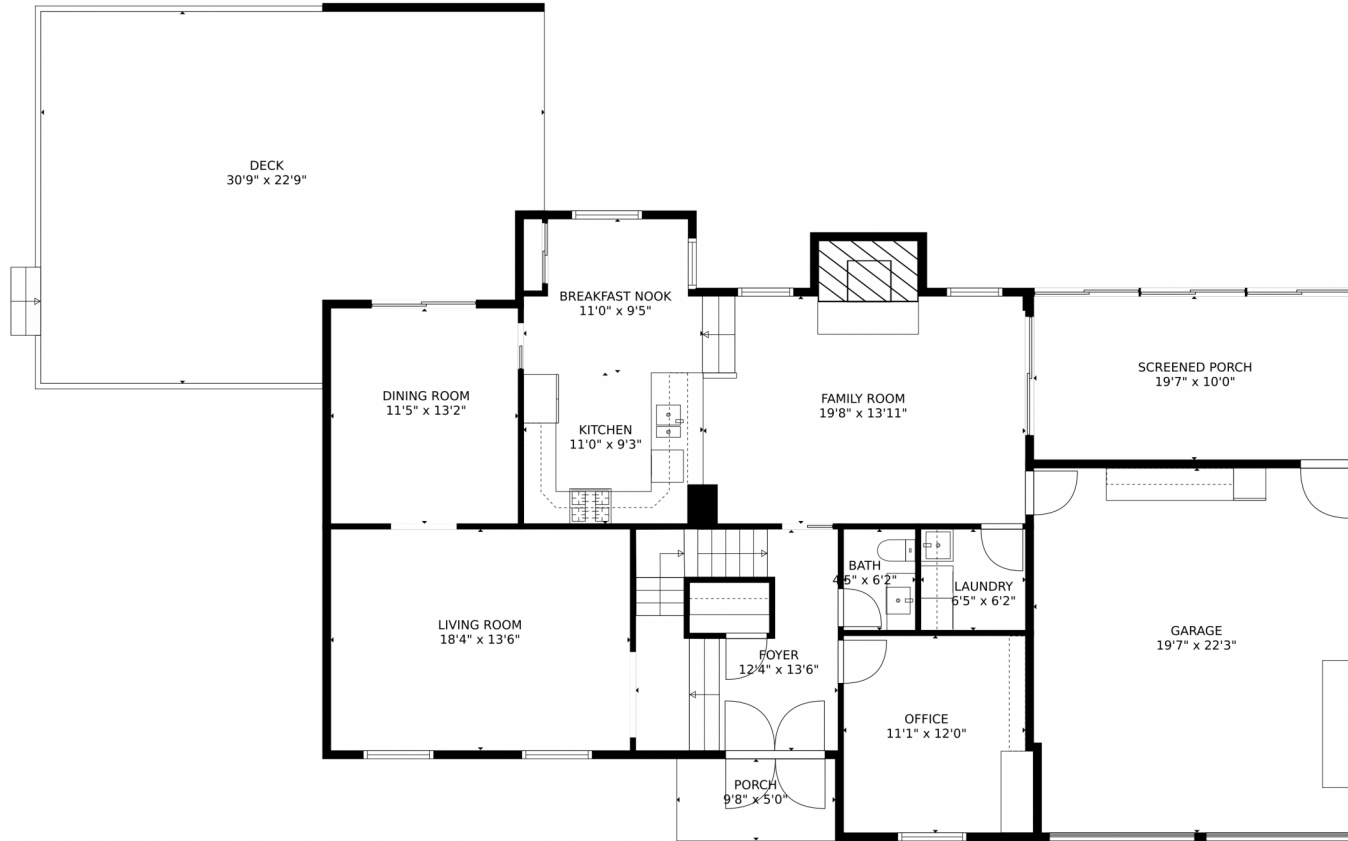
Single Family 3228 SQFT 4 Beds 2/1 Baths 2 Car 0.24 Acre



Annie Schneider
303-548-5299
annie@annieschneider.com



8354 E Easter Court, Centennial, CO 80112 – Main Level



GROSS INTERNAL AREA
Below Ground: 296 sq. ft, FLOOR 2: 1278 sq. ft, FLOOR 3: 1131 sq. ft
EXCLUDED AREAS: ELECTRICAL ROOM: 327 sq. ft, PORCH: 49 sq. ft, SCREENED PORCH: 196 sq. ft,
DECK: 620 sq. ft, GARAGE: 434 sq. ft, FIREPLACE: 18 sq. ft
TOTAL: 2705 sq. ft
MEASUREMENTS CALCULATED BY V1Photos.COM ARE DEEMED HIGHLY RELIABLE BUT NOT GUARANTEED.



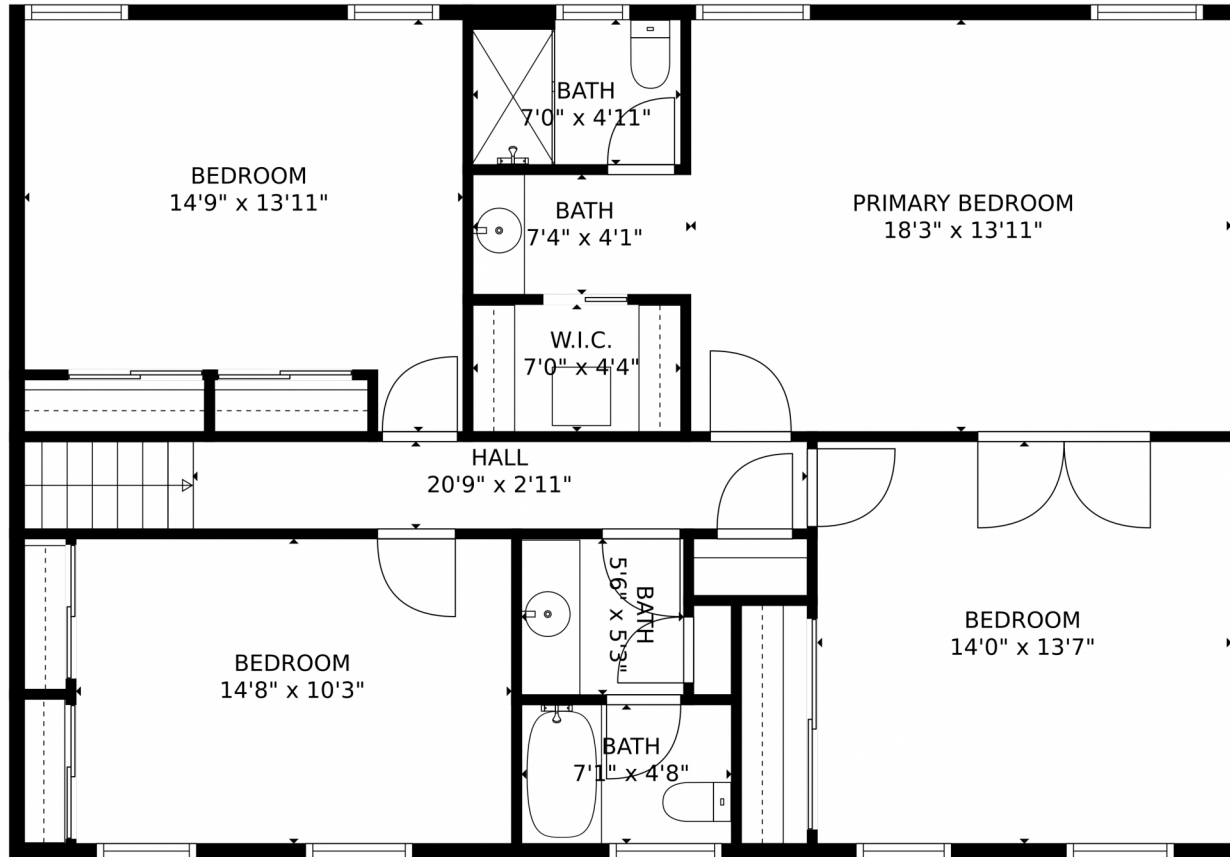
Disclaimer: Sizes and Dimensions are Approximate, Actual May Vary.



Annie Schneider
303-548-5299
annie@annieschneider.com



8354 E Easter Court, Centennial, CO 80112 – 2nd Level



GROSS INTERNAL AREA
Below Ground: 296 sq. ft, FLOOR 2: 1278 sq. ft, FLOOR 3: 1131 sq. ft
EXCLUDED AREAS: ELECTRICAL ROOM: 327 sq. ft, PORCH: 49 sq. ft, SCREENED PORCH: 196 sq. ft,
DECK: 620 sq. ft, GARAGE: 434 sq. ft, FIREPLACE: 18 sq. ft
TOTAL: 2705 sq. ft
MEASUREMENTS CALCULATED BY V1Photos.COM ARE DEEMED HIGHLY RELIABLE BUT NOT GUARANTEED.

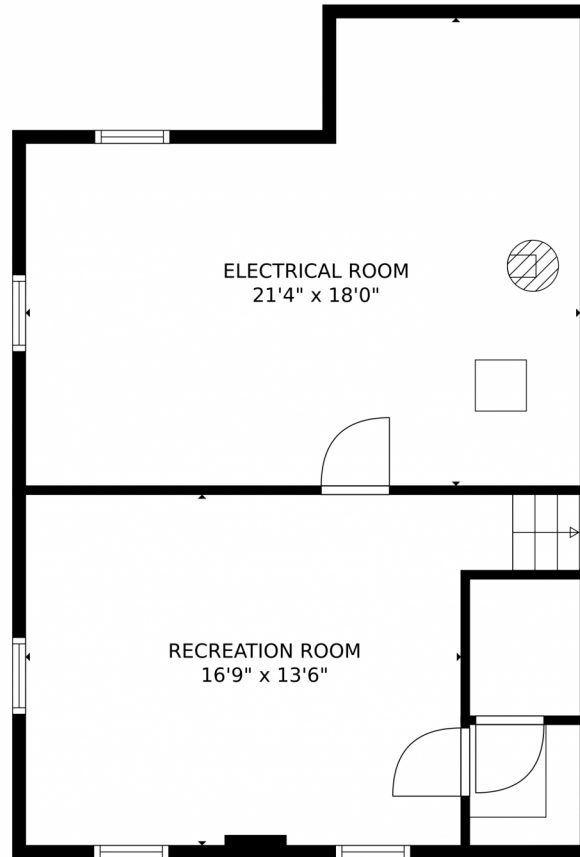


Disclaimer: Sizes and Dimensions are Approximate, Actual May Vary.



Annie Schneider
303-548-5299
annie@annieschneider.com





GROSS INTERNAL AREA
Below Ground: 296 sq. ft, FLOOR 2: 1278 sq. ft, FLOOR 3: 1131 sq. ft
EXCLUDED AREAS: ELECTRICAL ROOM: 327 sq. ft, PORCH: 49 sq. ft, SCREENED PORCH: 196 sq. ft,
DECK: 620 sq. ft, GARAGE: 434 sq. ft, FIREPLACE: 18 sq. ft
TOTAL: 2705 sq. ft
MEASUREMENTS CALCULATED BY V1Photos.com ARE DEEMED HIGHLY RELIABLE BUT NOT GUARANTEED.



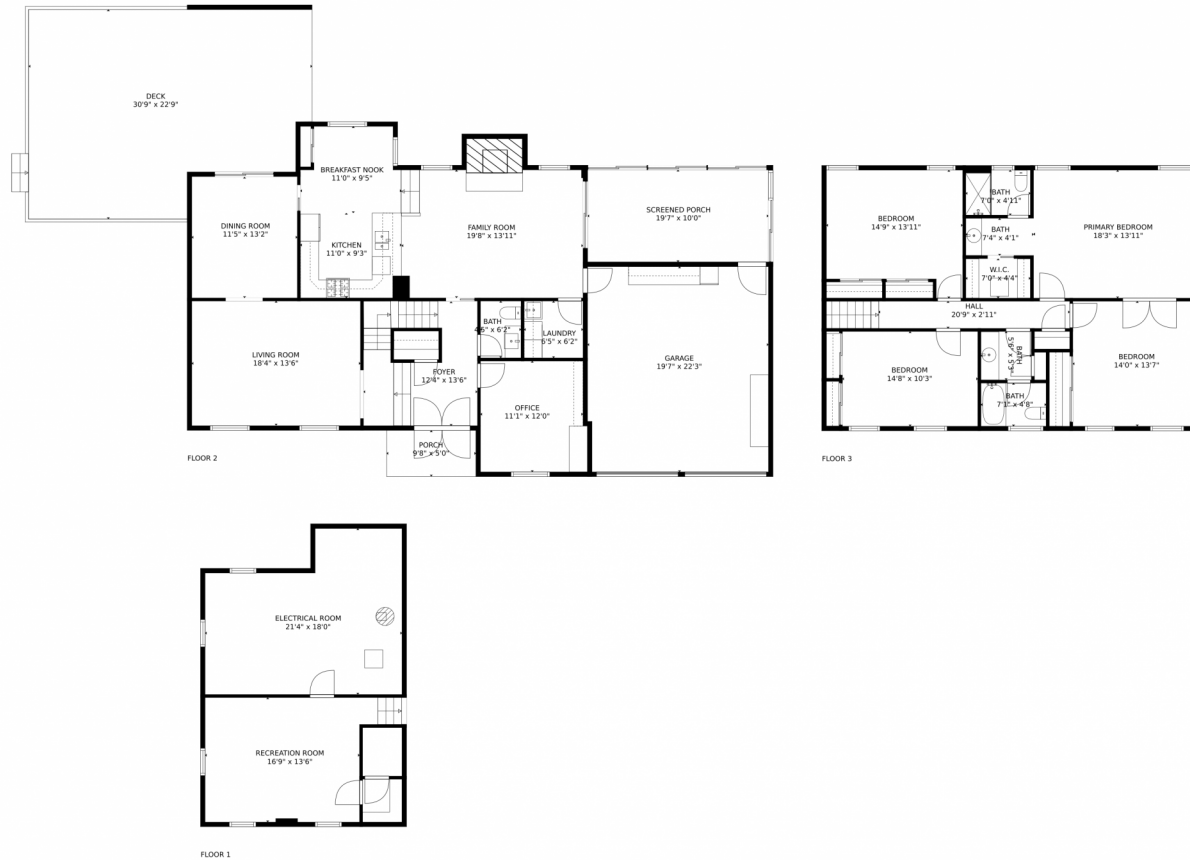
Disclaimer: Sizes and Dimensions are Approximate, Actual May Vary.



Annie Schneider
303-548-5299
annie@annieschneider.com



8354 E Easter Court, Centennial, CO 80112 – All Levels



GROSS INTERNAL AREA
Below Ground: 296 sq. ft, FLOOR 2: 1278 sq. ft, FLOOR 3: 1131 sq. ft
EXCLUDED AREAS: ELECTRICAL ROOM: 327 sq. ft, PORCH: 49 sq. ft, SCREENED PORCH: 196 sq. ft,
DECK: 620 sq. ft, GARAGE: 434 sq. ft, FIREPLACE: 18 sq. ft
TOTAL: 2705 sq. ft
MEASUREMENTS CALCULATED BY V1Photos.COM ARE DEEMED HIGHLY RELIABLE BUT NOT GUARANTEED.



Disclaimer: Sizes and Dimensions are Approximate, Actual May Vary.



Annie Schneider
303-548-5299
annie@annieschneider.com

