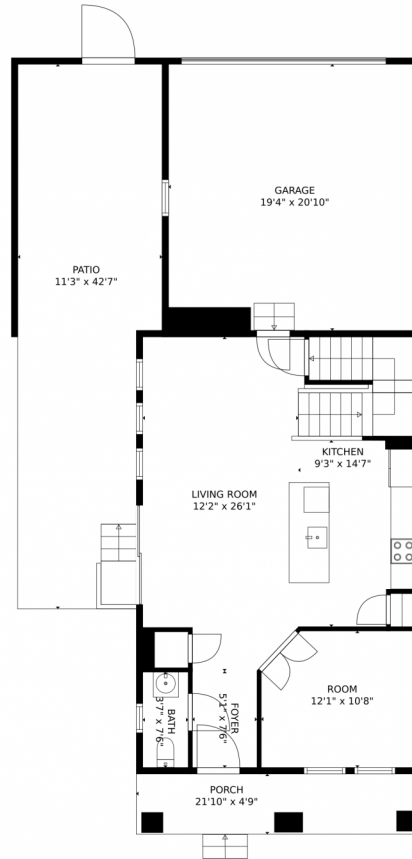


7621 South Winnipeg Street, Aurora, CO 80016 – Main Level



GROSS INTERNAL AREA
Below Ground: 557 sq. ft, FLOOR 2: 719 sq. ft, FLOOR 3: 1020 sq. ft
EXCLUDED AREAS: UNDEFINED: 24 sq. ft, ELECTRICAL ROOM: 64 sq. ft, PORCH: 103 sq. ft.
PATIO: 437 sq. ft, GARAGE: 403 sq. ft
TOTAL: 2296 sq. ft
MEASUREMENTS CALCULATED BY V1Photos.COM ARE DEEMED HIGHLY RELIABLE BUT NOT GUARANTEED.



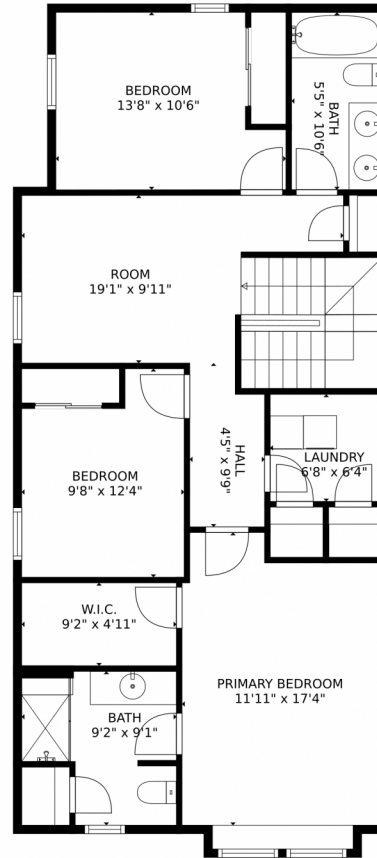
Disclaimer: Sizes and Dimensions are Approximate, Actual May Vary.



Taylor Haas
303-665-7368
taylorh@coloradorpm.com
<https://www.coloradorpm.com/available-rental-properties-denver>



7621 South Winnipeg Street, Aurora, CO 80016 – Upper Level



GROSS INTERNAL AREA
Below Ground: 557 sq. ft, FLOOR 2: 719 sq. ft, FLOOR 3: 1020 sq. ft
EXCLUDED AREAS: UNDEFINED: 24 sq. ft, ELECTRICAL ROOM: 64 sq. ft, PORCH: 103 sq. ft.
PATIO: 437 sq. ft, GARAGE: 403 sq. ft
TOTAL: 2296 sq. ft
MEASUREMENTS CALCULATED BY V1Photos.COM ARE DEEMED HIGHLY RELIABLE BUT NOT GUARANTEED.



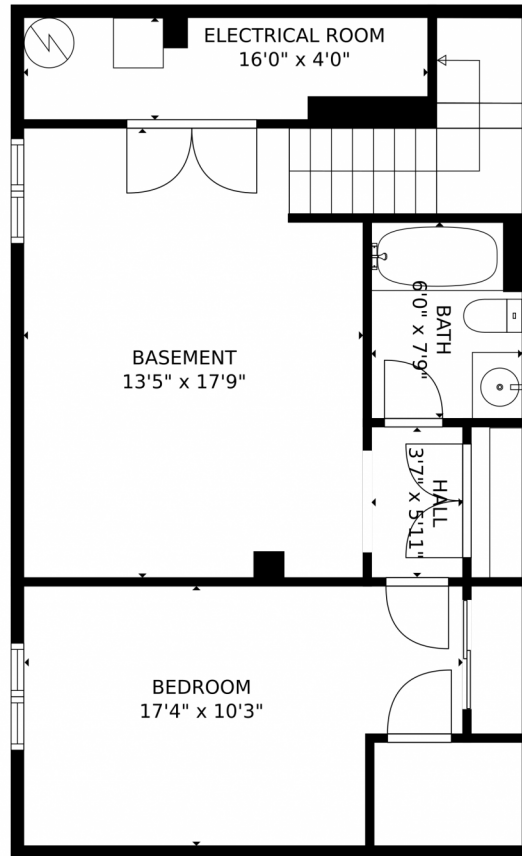
Disclaimer: Sizes and Dimensions are Approximate, Actual May Vary.



Taylor Haas
303-665-7368
taylorh@coloradorpm.com
<https://www.coloradorpm.com/available-rental-properties-denver>



7621 South Winnipeg Street, Aurora, CO 80016 – Lower Level



GROSS INTERNAL AREA
Below Ground: 557 sq. ft, FLOOR 2: 719 sq. ft, FLOOR 3: 1020 sq. ft
EXCLUDED AREAS: UNDEFINED: 24 sq. ft, ELECTRICAL ROOM: 64 sq. ft, PORCH: 103 sq. ft.
PATIO: 437 sq. ft, GARAGE: 403 sq. ft
TOTAL: 2296 sq. ft
MEASUREMENTS CALCULATED BY V1Photos.COM ARE DEEMED HIGHLY RELIABLE BUT NOT GUARANTEED.



Disclaimer: Sizes and Dimensions are Approximate, Actual May Vary.



Taylor Haas
303-665-7368
taylorh@coloradorpm.com
<https://www.coloradorpm.com/available-rental-properties-denver>



Scan code
for more
property
details



7621 South Winnipeg Street, Aurora, CO 80016 – All Levels



GROSS INTERNAL AREA
Below Ground: 557 sq. ft, FLOOR 2: 719 sq. ft, FLOOR 3: 1020 sq. ft
EXCLUDED AREAS: UNDEFINED: 24 sq. ft, ELECTRICAL ROOM: 64 sq. ft, PORCH: 103 sq. ft,
PATIO: 437 sq. ft, GARAGE: 403 sq. ft
TOTAL: 2296 sq. ft
MEASUREMENTS CALCULATED BY V1Photos.com ARE DEEMED HIGHLY RELIABLE BUT NOT GUARANTEED.



Disclaimer: Sizes and Dimensions are Approximate, Actual May Vary.



Taylor Haas
303-665-7368
taylorh@coloradorpm.com
<https://www.coloradorpm.com/available-rental-properties-denver>

