




5358 S Liverpool Way  
 Centennial, CO 80015  
 COMMUNITY: Park View Meadows

MLS # 3617483  
 PRICE \$570,000




 Single Family

 2462 SQFT

 3 Beds

 2 Baths

 3 Car

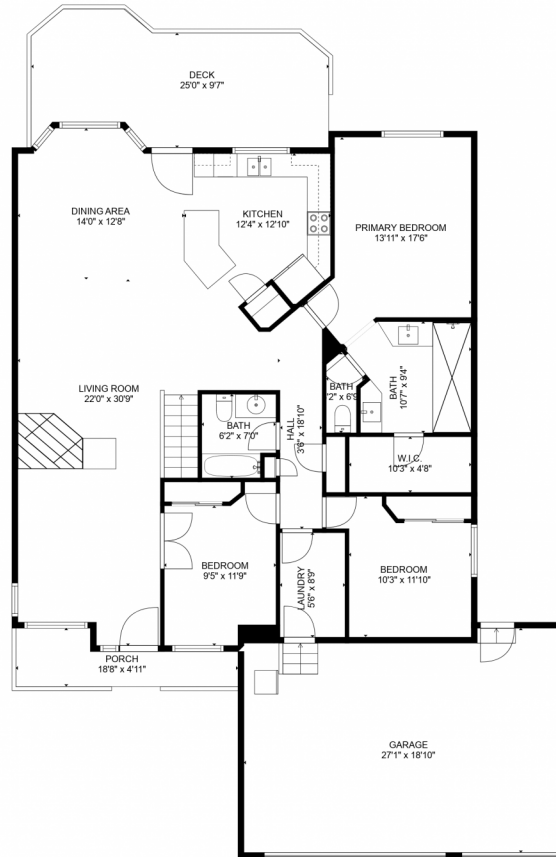
 0.18 Acre



**Tatyana Sturm**  
 720-350-5909  
 tatyana@exitrealtydtc.com  
 https://thestorckteam.com



# 5358 S Liverpool Way, Centennial, CO 80015 — 1st Floor



GROSS INTERNAL AREA  
Below Ground: 0 sq. ft, FLOOR 2: 1576 sq. ft  
EXCLUDED AREAS: UNFINISHED BASEMENT: 779 sq. ft, GARAGE: 488 sq. ft, DECK: 236 sq. ft,  
PORCH: 67 sq. ft  
TOTAL: 1576 sq. ft  
MEASUREMENTS CALCULATED BY V1Photos.com ARE DEEMED HIGHLY RELIABLE BUT NOT GUARANTEED.



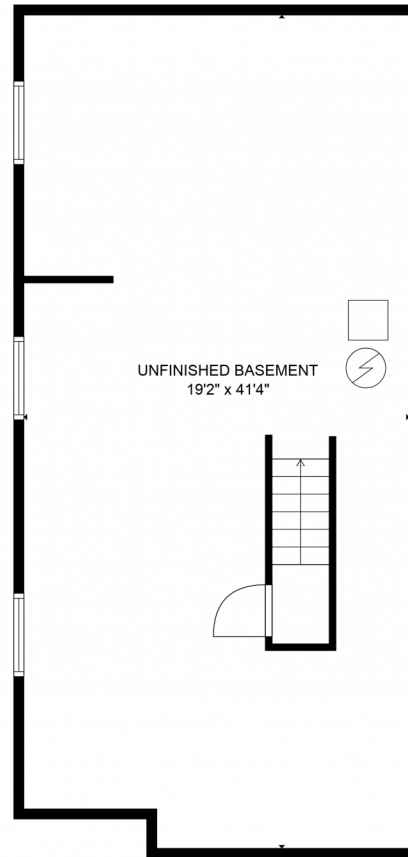
Disclaimer: Sizes and Dimensions are Approximate, Actual May Vary.



**Tatyana Sturm**  
720-350-5909  
tatyana@exitrealttydc.com  
<https://thestorckteam.com>



5358 S Liverpool Way, Centennial, CO 80015 – Basement



GROSS INTERNAL AREA  
Below Ground: 0 sq. ft, FLOOR 2: 1576 sq. ft  
EXCLUDED AREAS: UNFINISHED BASEMENT: 779 sq. ft, GARAGE: 488 sq. ft, DECK: 236 sq. ft,  
PORCH: 67 sq. ft  
TOTAL: 1576 sq. ft  
MEASUREMENTS CALCULATED BY V1Photos.com ARE DEEMED HIGHLY RELIABLE BUT NOT GUARANTEED.



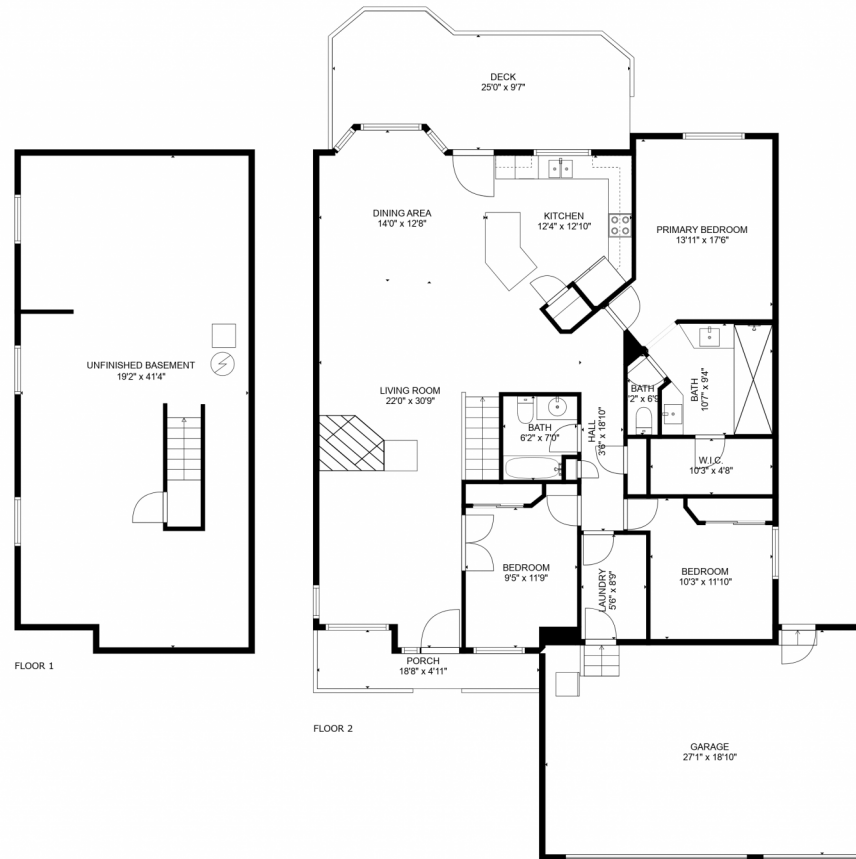
Disclaimer: Sizes and Dimensions are Approximate, Actual May Vary.



**Tatyana Sturm**  
720-350-5909  
tatyana@exitrealtydtc.com  
<https://thestorckteam.com>



# 5358 S Liverpool Way, Centennial, CO 80015 – All Floors



GROSS INTERNAL AREA  
Below Ground: 0 sq. ft, FLOOR 2: 1576 sq. ft  
EXCLUDED AREAS: UNFINISHED BASEMENT: 779 sq. ft, GARAGE: 488 sq. ft, DECK: 236 sq. ft,  
PORCH: 67 sq. ft  
TOTAL: 1576 sq. ft  
MEASUREMENTS CALCULATED BY V1Photos.com ARE DEEMED HIGHLY RELIABLE BUT NOT GUARANTEED.



Disclaimer: Sizes and Dimensions are Approximate, Actual May Vary.



**Tatyana Sturm**  
720-350-5909  
tatyana@exitrealtydtc.com  
<https://thestorckteam.com>



Scan code  
for more  
property  
details

