



6247 S Killarney Court
 Centennial, CO 80016
 COMMUNITY: Greenfield

MLS # 7071855
 PRICE \$825,000



Single Family



4743 SQFT



6 Beds



3/1 Baths



3 Car



0.19 Acre



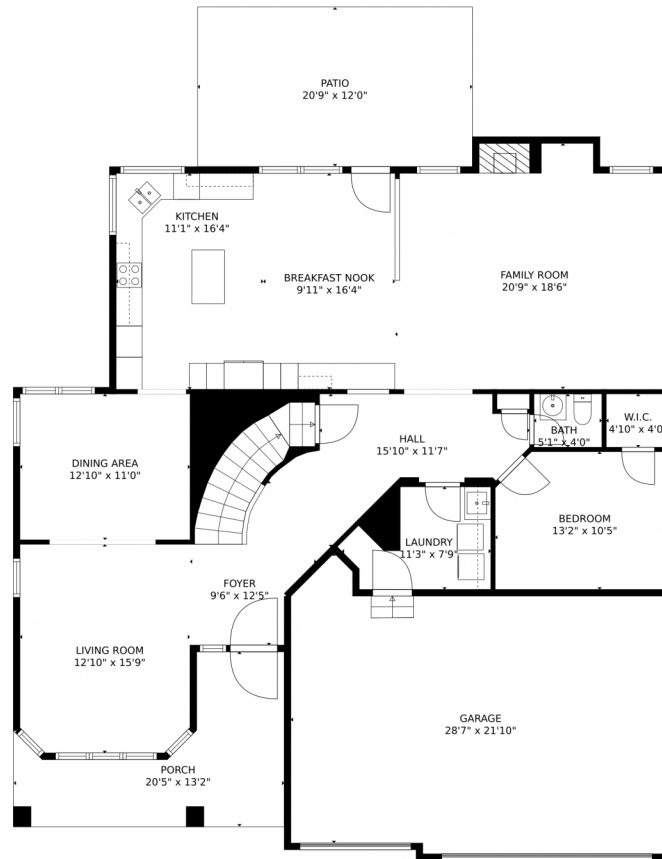
Tatyana Sturm
 720-350-5909
 tatyana@exitrealtydtc.com
 https://thestorckteam.com



Scan code
 for more
 property
 details



6247 S Killarney Court, Centennial, CO 80016 – Main Level



TOTAL: 4110 sq. ft
Below Ground: 1247 sq. ft, FLOOR 2: 1613 sq. ft, FLOOR 3: 1250 sq. ft
EXCLUDED AREAS: ROOM: 120 sq. ft, ELECTRICAL ROOM: 61 sq. ft, GARAGE: 557 sq. ft,
PORCH: 162 sq. ft, PATIO: 250 sq. ft, OPEN TO BELOW: 644 sq. ft

MEASUREMENTS CALCULATED BY V1Photos.com ARE DEEMED HIGHLY RELIABLE BUT NOT GUARANTEED.



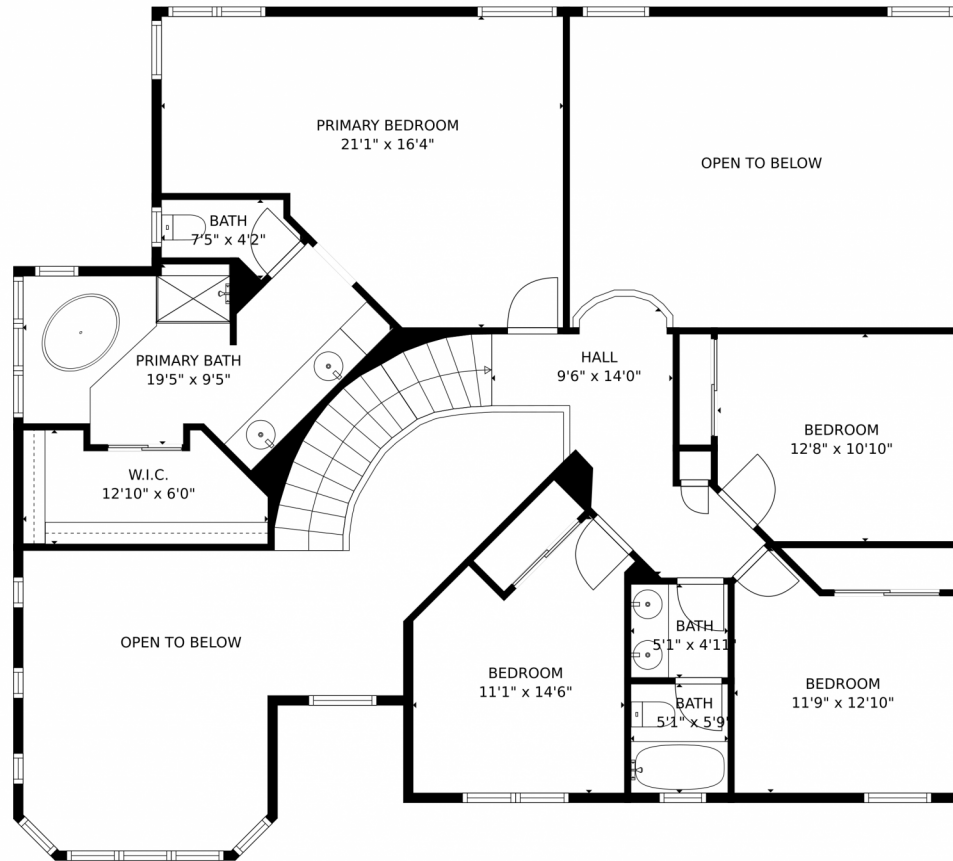
Disclaimer: Sizes and Dimensions are Approximate, Actual May Vary.



Tatyana Sturm
720-350-5909
tatyana@exitrealtydtc.com
<https://thestorckteam.com>



6247 S Killarney Court, Centennial, CO 80016 – Second Level



TOTAL: 4110 sq. ft
Below Ground: 1247 sq. ft, FLOOR 2: 1613 sq. ft, FLOOR 3: 1250 sq. ft
EXCLUDED AREAS: ROOM: 120 sq. ft, ELECTRICAL ROOM: 61 sq. ft, GARAGE: 557 sq. ft,
PORCH: 162 sq. ft, PATIO: 250 sq. ft, OPEN TO BELOW: 644 sq. ft

MEASUREMENTS CALCULATED BY V1Photos.com ARE DEEMED HIGHLY RELIABLE BUT NOT GUARANTEED.



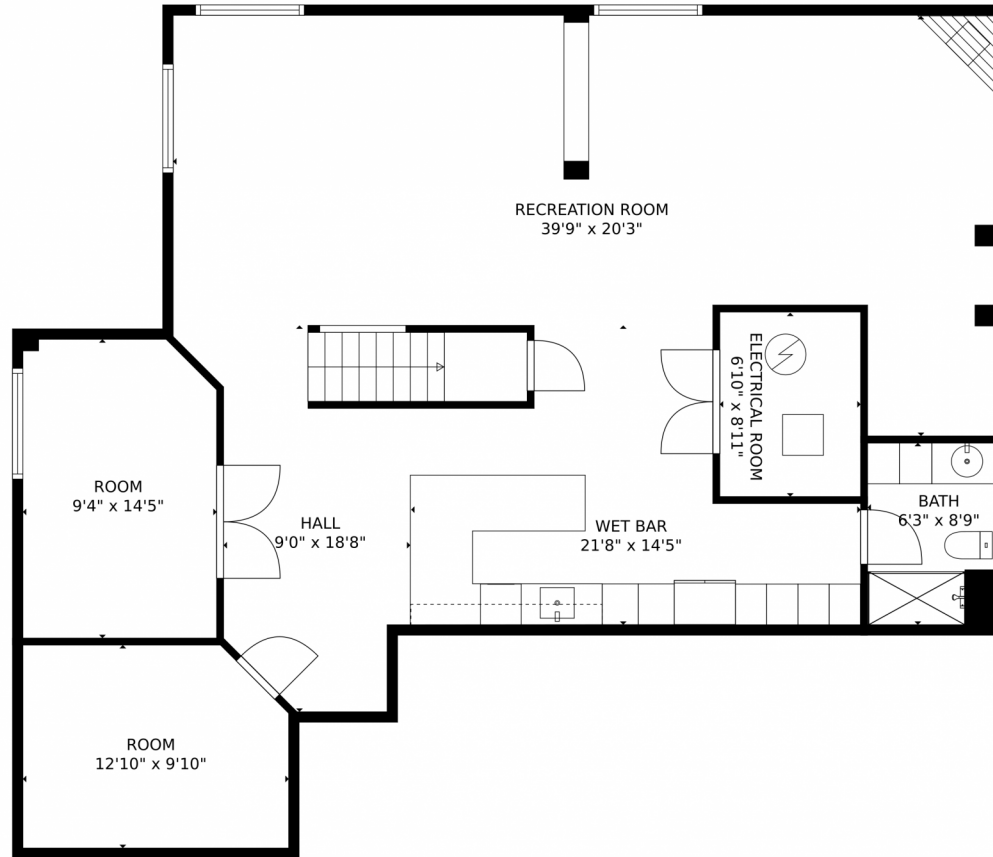
Disclaimer: Sizes and Dimensions are Approximate, Actual May Vary.



Tatyana Sturm
720-350-5909
tatyana@exitrealttydc.com
<https://thestorckteam.com>



6247 S Killarney Court, Centennial, CO 80016 – Lower Level



TOTAL: 4110 sq. ft
Below Ground: 1247 sq. ft, FLOOR 2: 1613 sq. ft, FLOOR 3: 1250 sq. ft
EXCLUDED AREAS: ROOM: 120 sq. ft, ELECTRICAL ROOM: 61 sq. ft, GARAGE: 557 sq. ft,
PORCH: 162 sq. ft, PATIO: 250 sq. ft, OPEN TO BELOW: 644 sq. ft

MEASUREMENTS CALCULATED BY V1Photos.com ARE DEEMED HIGHLY RELIABLE BUT NOT GUARANTEED.



Disclaimer: Sizes and Dimensions are Approximate, Actual May Vary.



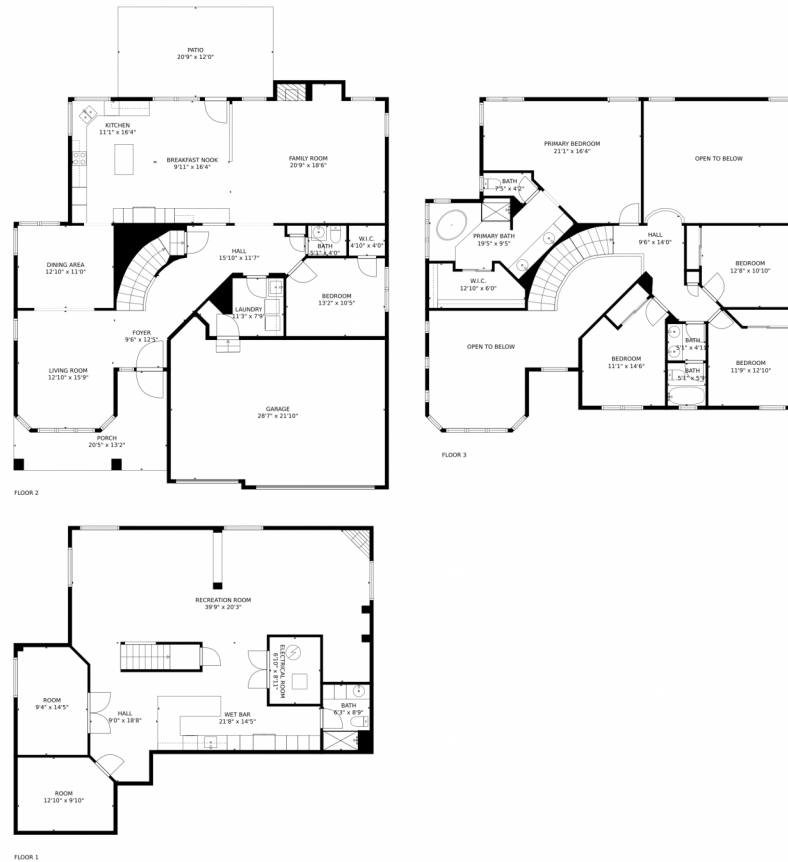
Tatyana Sturm
720-350-5909
tatyana@exitrealtydtc.com
<https://thestorckteam.com>



Scan code
for more
property
details



6247 S Killarney Court, Centennial, CO 80016 — All Levels



TOTAL: 4110 sq. ft
Below Ground: 1247 sq. ft, FLOOR 2: 1613 sq. ft, FLOOR 3: 1250 sq. ft
EXCLUDED AREAS: ROOM: 120 sq. ft, ELECTRICAL ROOM: 61 sq. ft, GARAGE: 557 sq. ft,
PORCH: 162 sq. ft, PATIO: 250 sq. ft, OPEN TO BELOW: 644 sq. ft

MEASUREMENTS CALCULATED BY V1Photos.com ARE DEEMED HIGHLY RELIABLE BUT NOT GUARANTEED.



Disclaimer: Sizes and Dimensions are Approximate, Actual May Vary.



Tatyana Sturm
720-350-5909
tatyana@exitrealttydc.com
<https://thestorckteam.com>



Scan code
for more
property
details

