

Littleton Duplex - Fully Rented



Single Family

2156 SQFT

4 Beds

2 Baths

2 Car

0.14 Acre

PROPERTY DETAILS

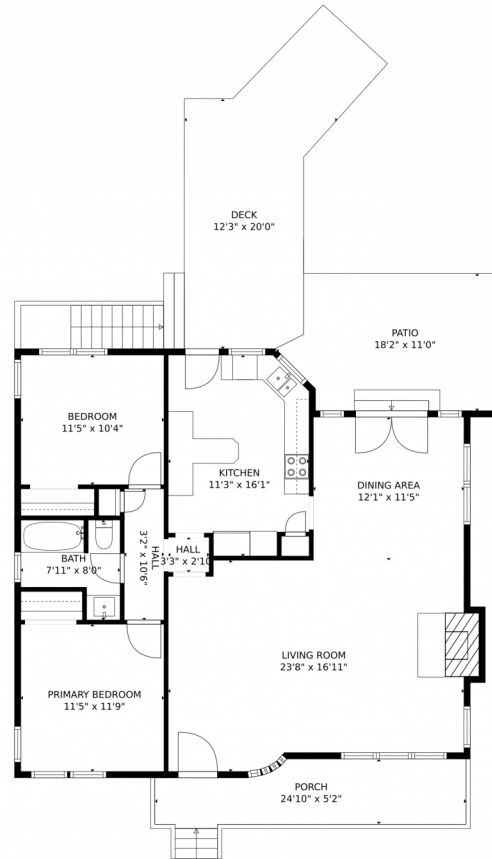
Step into this fully rented Duplex in Littleton. The top unit features an abundance of natural light, tiled kitchen & bathroom, then hardwood floors throughout the rest of the unit. The floorplan is open and spacious. The dining room includes French doors leading to the backyard. --- The basement unit has its own entry and is beautiful with tiled kitchen and bathroom, then newer carpet in the bedrooms and living room. The living room is oversized and offers a great corner if you need a workspace. --- Both units share an oversized laundry room located in the basement complete with counter space, storage cabinets, and more. The back yard is spacious with newly re-stained deck. The property includes a detached 2-car garage complete with 220V and new doors (2023) - offering one space per unit with alley access. The front offers additional street parking. Both units enjoy a wood burning fireplace. Renters love this property for its proximity to Light Rail, Littleton Recreation Center, and downtown Littleton via the Centennial Link Trail. As the future owner, you'll enjoy the zero maintenance, xeriscaped front yard, 2013 windows, and great neighborhood.



Eve Evans
720-299-8643
Eve@TheRealEveEvans.com
<https://www.TheRealEveEvans.com/>



5358 South Louthan Street, Littleton, CO 80120 – Main Level



GROSS INTERNAL AREA
Below Ground: 1008 sq. ft, FLOOR 2: 1094 sq. ft, FLOOR 3: 0 sq. ft
EXCLUDED AREAS: STORAGE: 31 sq. ft, FIREPLACE: 13 sq. ft, PATIO: 177 sq. ft,
DECK: 249 sq. ft, PORCH: 117 sq. ft, GARAGE: 372 sq. ft
TOTAL: 2102 sq. ft
MEASUREMENTS CALCULATED BY V1Photos.COM ARE DEEMED HIGHLY RELIABLE BUT NOT GUARANTEED.



Disclaimer: Sizes and Dimensions are Approximate, Actual May Vary.



Eve Evans

720-299-8643

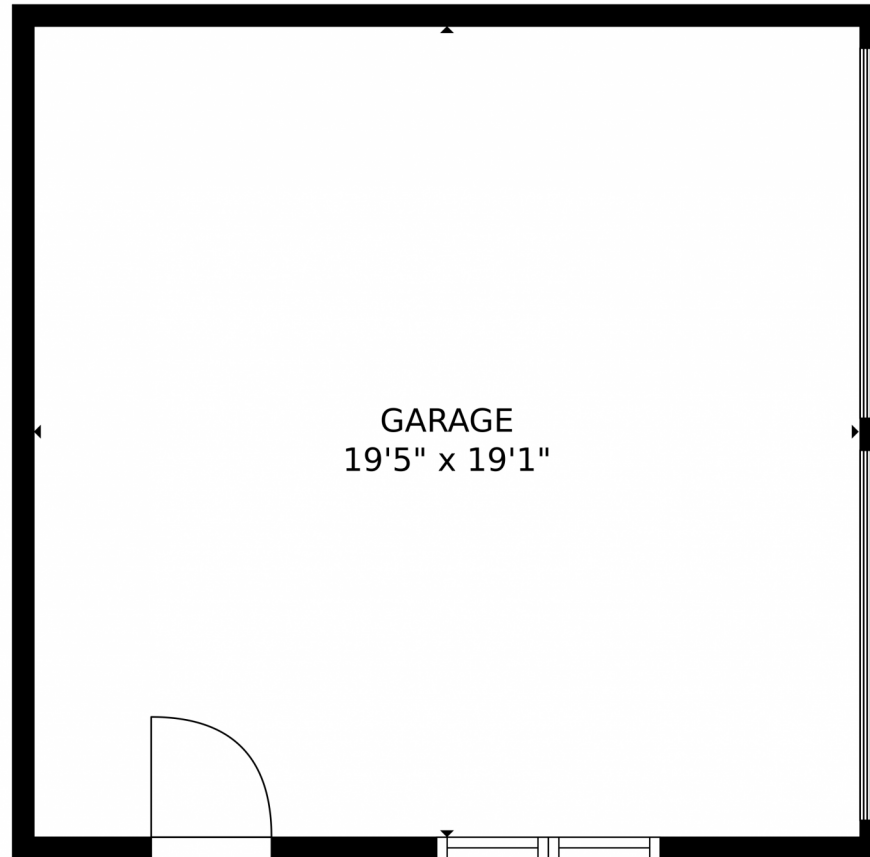
Eve@TheRealEveEvans.com

<https://www.TheRealEveEvans.com/>



Scan code
for more
property
details





GROSS INTERNAL AREA
Below Ground: 1008 sq. ft, FLOOR 2: 1094 sq. ft, FLOOR 3: 0 sq. ft
EXCLUDED AREAS: STORAGE: 31 sq. ft, FIREPLACE: 13 sq. ft, PATIO: 177 sq. ft,
DECK: 249 sq. ft, PORCH: 117 sq. ft, GARAGE: 372 sq. ft
TOTAL: 2102 sq. ft
MEASUREMENTS CALCULATED BY V1Photos.COM ARE DEEMED HIGHLY RELIABLE BUT NOT GUARANTEED.



Disclaimer: Sizes and Dimensions are Approximate, Actual May Vary.

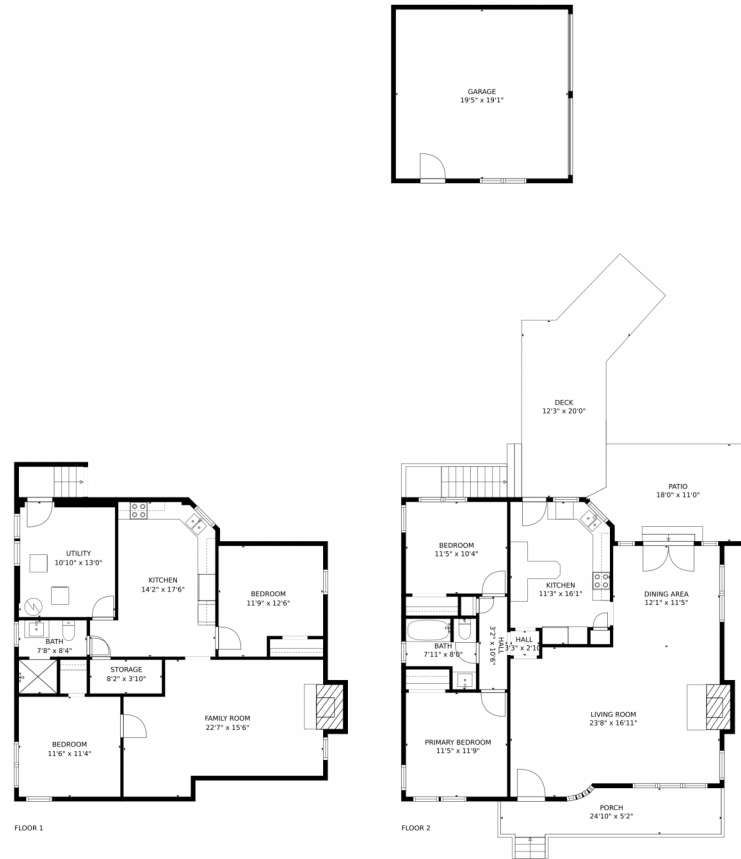


Eve Evans
720-299-8643
Eve@TheRealEveEvans.com
<https://www.TheRealEveEvans.com/>



Scan code
for more
property
details

5358 South Louthan Street, Littleton, CO 80120 – All Levels



GROSS INTERNAL AREA
Below Ground: 1008 sq. ft. FLOOR 2: 1094 sq. ft.
EXCLUDED AREAS: STORAGE: 31 sq. ft. FIREPLACE: 13 sq. ft. GARAGE: 372 sq. ft.
PATIO: 177 sq. ft. DECK: 249 sq. ft. PORCH: 117 sq. ft.
TOTAL: 2102 sq. ft.
MEASUREMENTS CALCULATED BY V1Photos.com ARE DEEMED HIGHLY RELIABLE BUT NOT GUARANTEED.



Disclaimer: Sizes and Dimensions are Approximate, Actual May Vary.



Eve Evans

720-299-8643

Eve@TheRealEveEvans.com

<https://www.TheRealEveEvans.com/>



Scan code
for more
property
details

