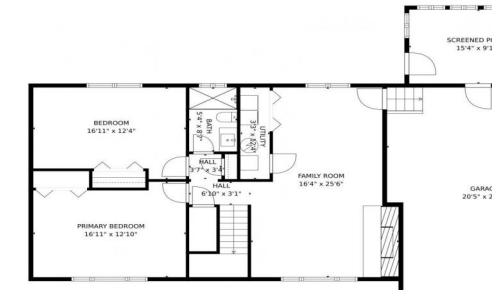




1549 Northwestern Road, Longmont, CO 80503 - Lower Level



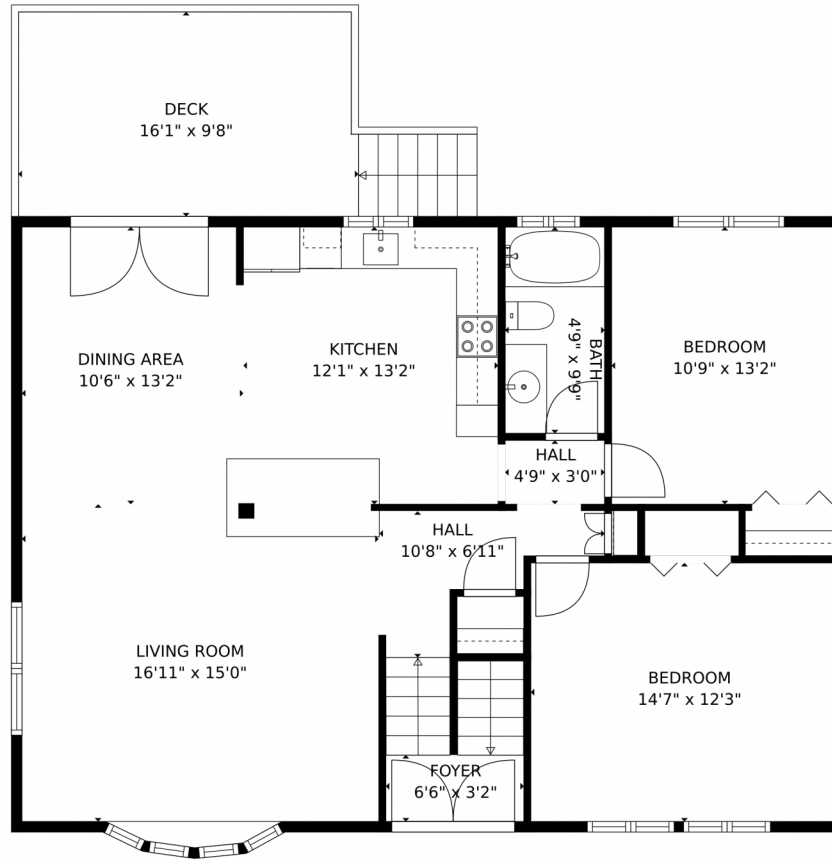
 Single Family  1200 SQFT



Daniel Mackin
720-466-3378
dan@mreiagents.com



1549 Northwestern Road, Longmont, CO 80503 – Main Level



TOTAL: 2085 sq. ft
Below Ground: 990 sq. ft, FLOOR 2: 1095 sq. ft
EXCLUDED AREAS: SCREENED PORCH: 153 sq. ft, GARAGE: 544 sq. ft, FIREPLACE: 12 sq. ft,
DECK: 154 sq. ft

MEASUREMENTS CALCULATED BY V1Photos.com ARE DEEMED HIGHLY RELIABLE BUT NOT GUARANTEED.



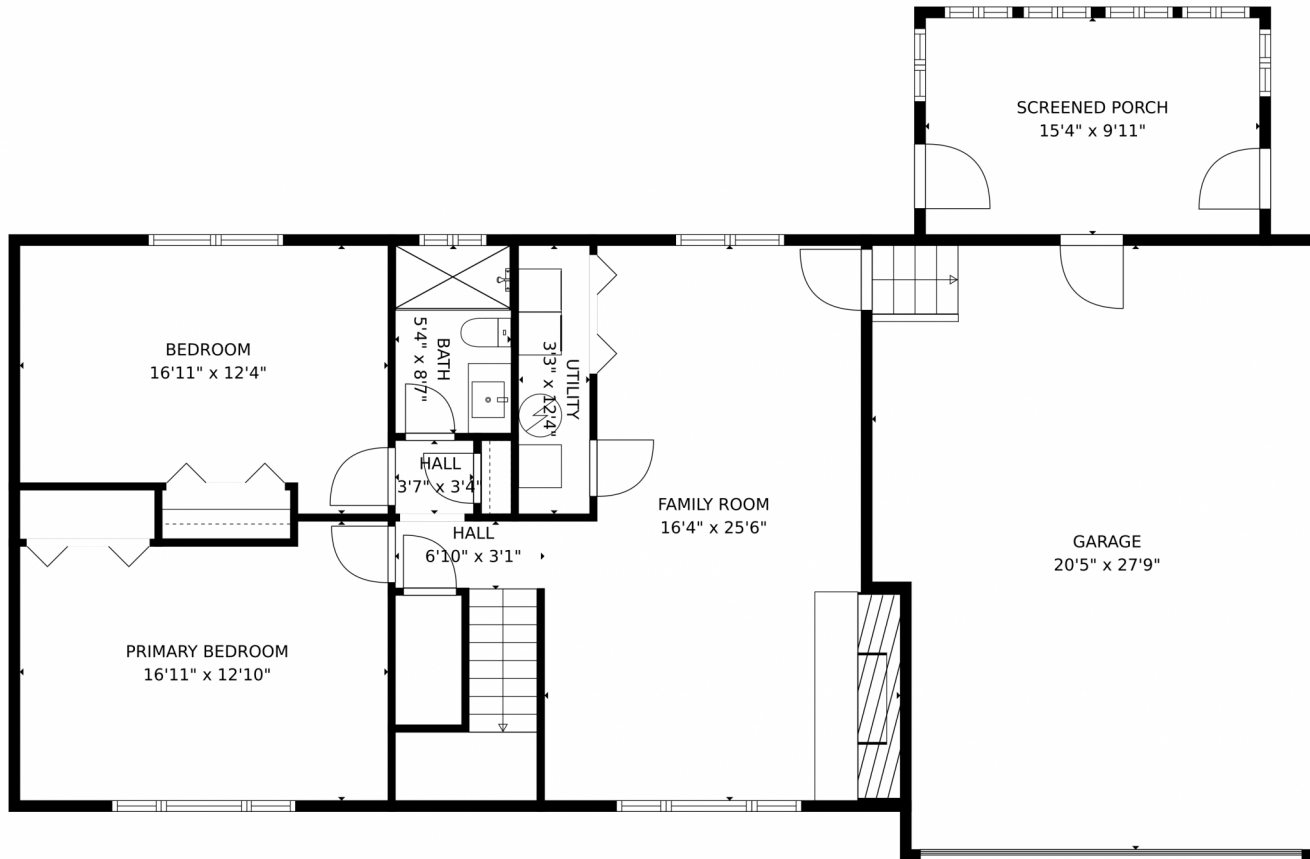
Disclaimer: Sizes and Dimensions are Approximate, Actual May Vary.



Daniel Mackin
720-466-3378
dan@mreiagents.com



1549 Northwestern Road, Longmont, CO 80503 – Lower Level



TOTAL: 2085 sq. ft
Below Ground: 990 sq. ft, FLOOR 2: 1095 sq. ft
EXCLUDED AREAS: SCREENED PORCH: 153 sq. ft, GARAGE: 544 sq. ft, FIREPLACE: 12 sq. ft,
DECK: 154 sq. ft

MEASUREMENTS CALCULATED BY V1Photos.com ARE DEEMED HIGHLY RELIABLE BUT NOT GUARANTEED.



Disclaimer: Sizes and Dimensions are Approximate, Actual May Vary.



Daniel Mackin
720-466-3378
dan@mreiagents.com

Scan code
for more
property
details



1549 Northwestern Road, Longmont, CO 80503 – All Levels



TOTAL: 2085 sq. ft
Below Ground: 990 sq. ft, FLOOR 2: 1095 sq. ft
EXCLUDED AREAS: SCREENED PORCH: 153 sq. ft, GARAGE: 544 sq. ft, FIREPLACE: 12 sq. ft,
DECK: 154 sq. ft

MEASUREMENTS CALCULATED BY V1Photos.com ARE DEEMED HIGHLY RELIABLE BUT NOT GUARANTEED.



Disclaimer: Sizes and Dimensions are Approximate, Actual May Vary.



Daniel Mackin
720-466-3378
dan@mreiagents.com



Scan code for more property details

