



25729 East Polk Place
 Aurora, CO 80016
 COMMUNITY: Beacon Point



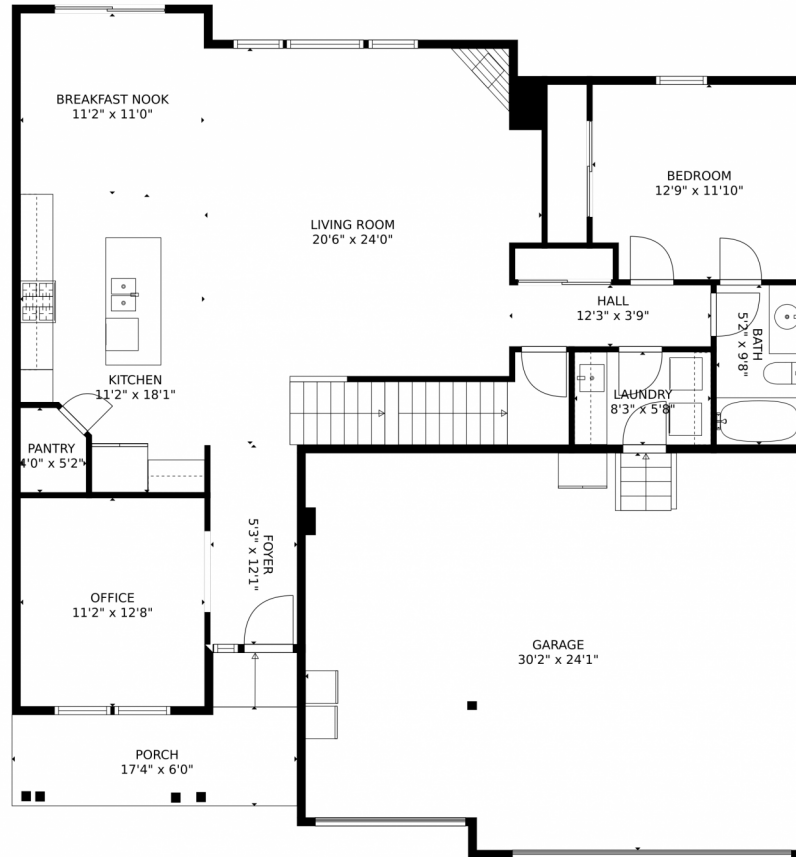
 Single Family
  2871 SQFT
  5 Beds
  4 Baths
  3 Car
  0.19 Acre



Tatyana Sturm
 720-350-5909
 tatyana@exitrealtydtc.com
 https://thestorckteam.com



25729 East Polk Place, Aurora, CO 80016 – 1st Floor



TOTAL: 2790 sq. ft
Below Ground: 0 sq. ft, FLOOR 2: 1372 sq. ft, FLOOR 3: 1418 sq. ft
EXCLUDED AREAS: UNFINISHED BASEMENT: 1318 sq. ft, PORCH: 115 sq. ft, GARAGE: 706 sq. ft,
OPEN TO BELOW: 447 sq. ft

MEASUREMENTS CALCULATED BY V1Photos.com ARE DEEMED HIGHLY RELIABLE BUT NOT GUARANTEED.



Disclaimer: Sizes and Dimensions are Approximate, Actual May Vary.



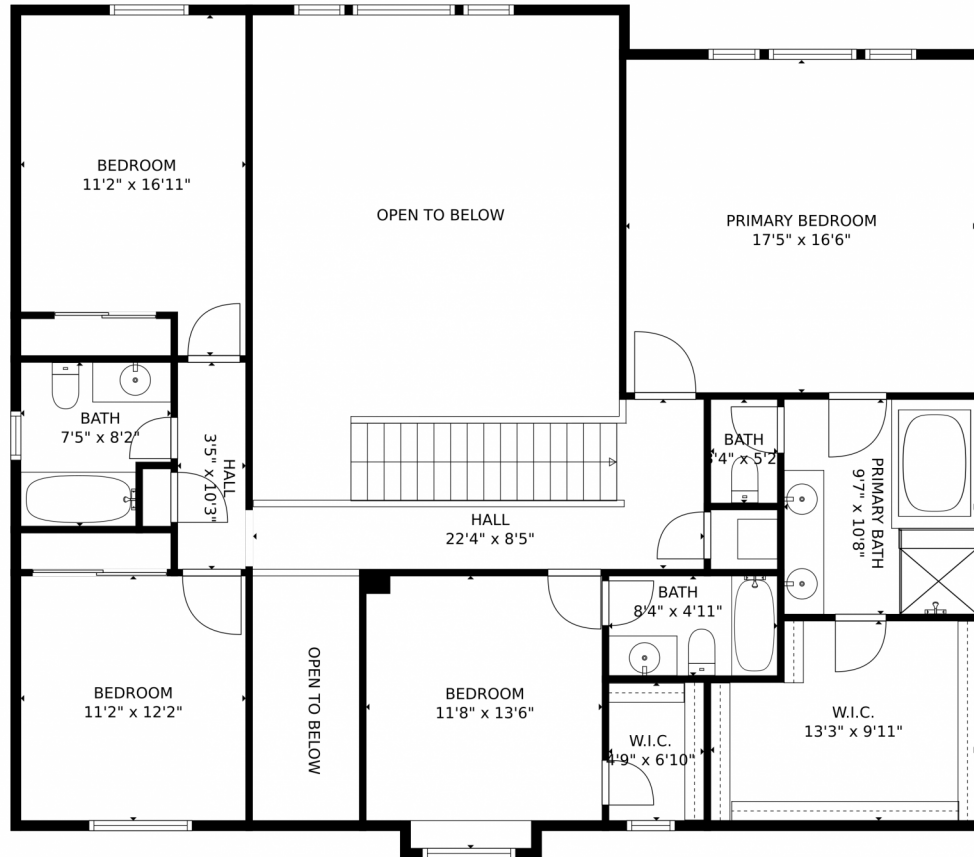
Tatyana Sturm
720-350-5909
tatyana@exitrealtydtc.com
<https://thestorckteam.com>



Scan code
for more
property
details



25729 East Polk Place, Aurora, CO 80016 – 2nd Floor



TOTAL: 2790 sq. ft
Below Ground: 0 sq. ft, FLOOR 2: 1372 sq. ft, FLOOR 3: 1418 sq. ft
EXCLUDED AREAS: UNFINISHED BASEMENT: 1318 sq. ft, PORCH: 115 sq. ft, GARAGE: 706 sq. ft,
OPEN TO BELOW: 447 sq. ft

MEASUREMENTS CALCULATED BY V1Photos.com ARE DEEMED HIGHLY RELIABLE BUT NOT GUARANTEED.



Disclaimer: Sizes and Dimensions are Approximate, Actual May Vary.

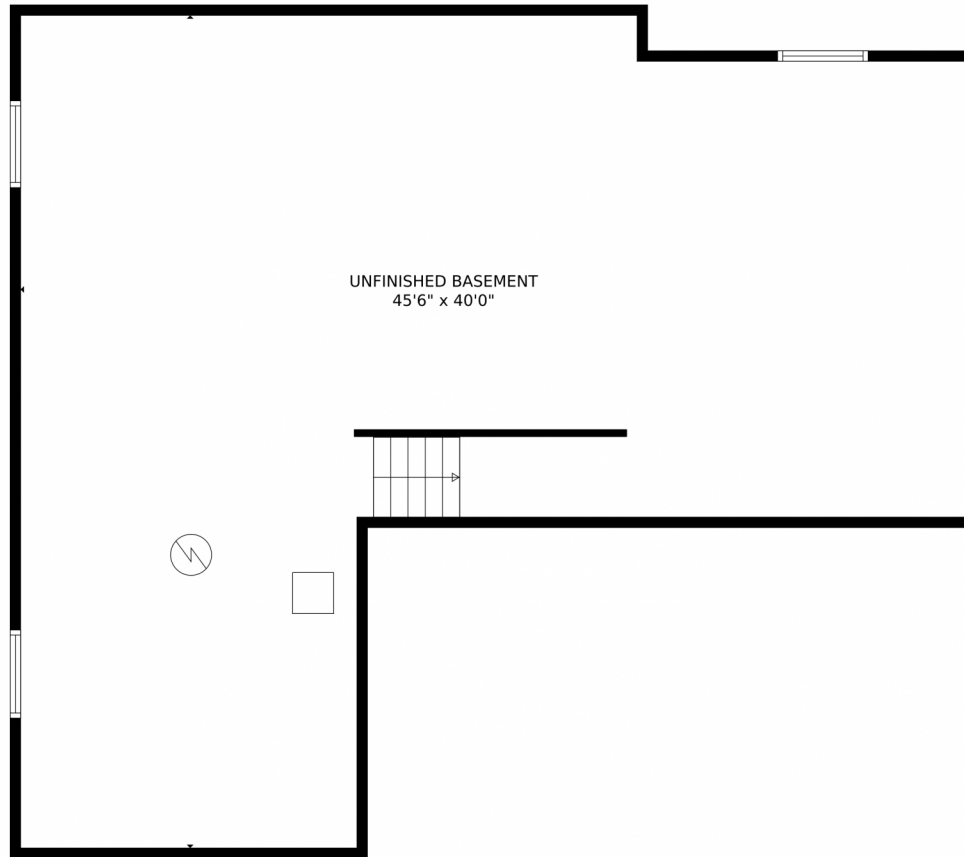


Tatyana Sturm
720-350-5909
tatyana@exitrealtydtc.com
<https://thestorckteam.com>



Scan code
for more
property
details





TOTAL: 2790 sq. ft
Below Ground: 0 sq. ft, FLOOR 2: 1372 sq. ft, FLOOR 3: 1418 sq. ft
EXCLUDED AREAS: UNFINISHED BASEMENT: 1318 sq. ft, PORCH: 115 sq. ft, GARAGE: 706 sq. ft,
OPEN TO BELOW: 447 sq. ft

MEASUREMENTS CALCULATED BY V1Photos.com ARE DEEMED HIGHLY RELIABLE BUT NOT GUARANTEED.



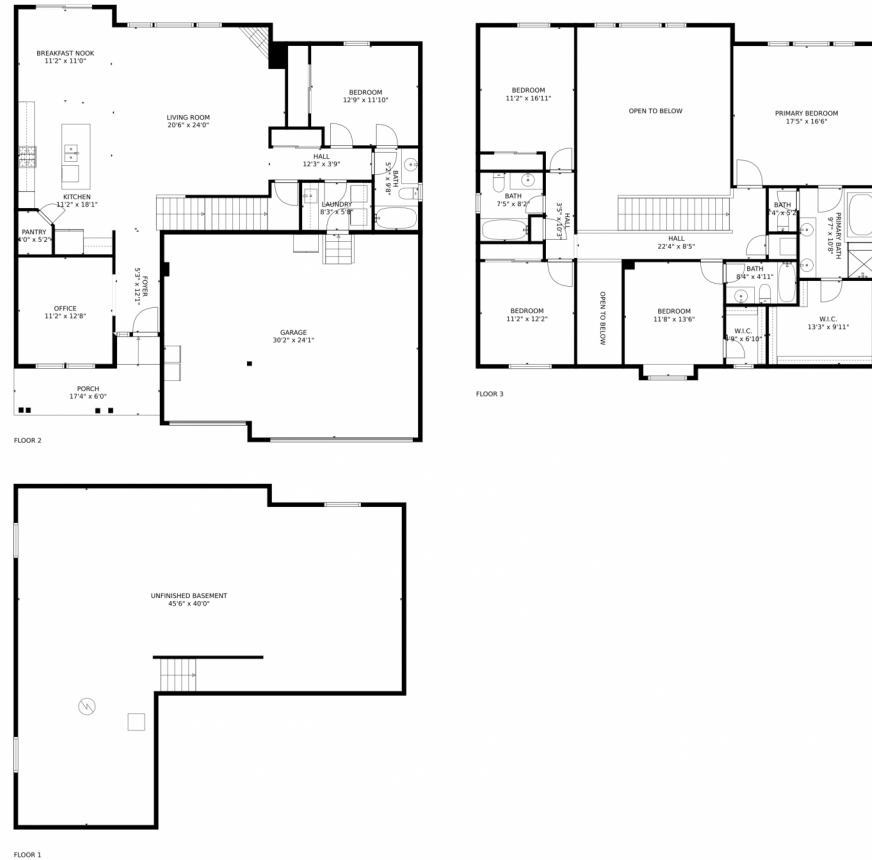
Disclaimer: Sizes and Dimensions are Approximate, Actual May Vary.



Tatyana Sturm
720-350-5909
tatyana@exitrealtydtc.com
<https://thestorckteam.com>



25729 East Polk Place, Aurora, CO 80016 – All Floors



TOTAL: 2790 sq. ft
Below Ground: 0 sq. ft, FLOOR 2: 1372 sq. ft, FLOOR 3: 1418 sq. ft
EXCLUDED AREAS: UNFINISHED BASEMENT: 1318 sq. ft, PORCH: 115 sq. ft, GARAGE: 706 sq. ft,
OPEN TO BELOW: 447 sq. ft

MEASUREMENTS CALCULATED BY V1Photos.com ARE DEEMED HIGHLY RELIABLE BUT NOT GUARANTEED.



Disclaimer: Sizes and Dimensions are Approximate, Actual May Vary.



Tatyana Sturm
720-350-5909
tatyana@exitrealtydtc.com
<https://thestorckteam.com>



Scan code
for more
property
details

