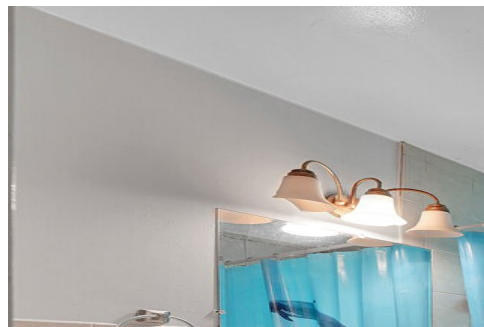


1740 West Stoll Place
Denver, CO 80221

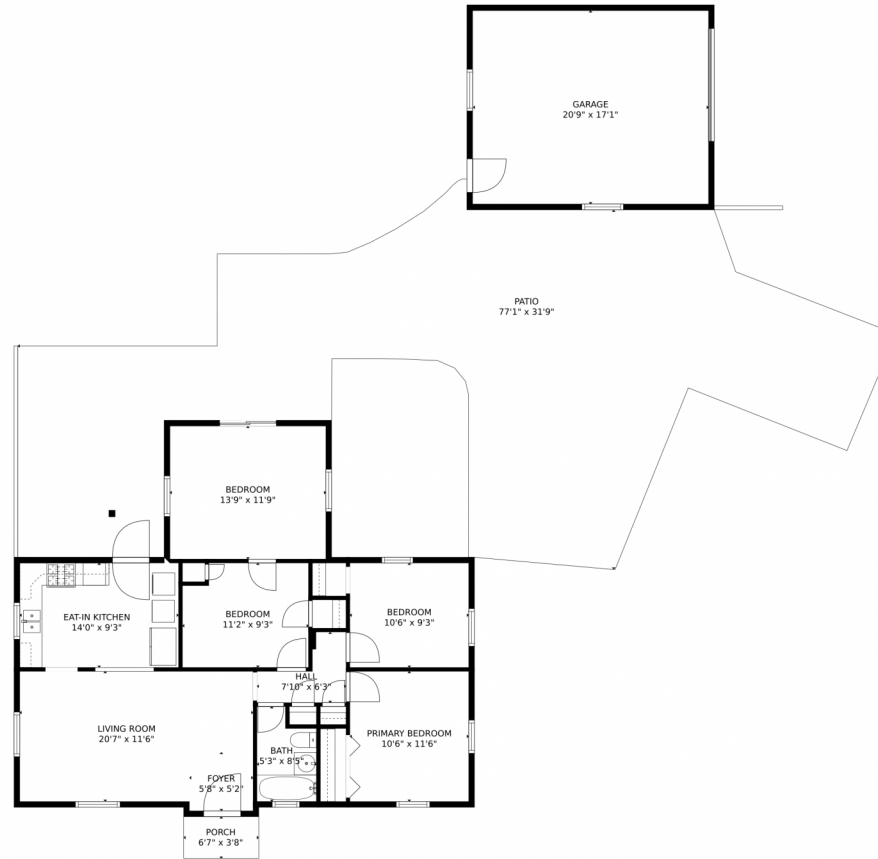


 Single Family  888 SQFT  0.16 Acre

Jerry Cervantes
479-719-7772
jerryc@jda-consulting.com



1740 West Stoll Place, Denver, CO 80221 – Floorplan



TOTAL: 1006 sq. ft
FLOOR 1: 1006 sq. ft
EXCLUDED AREAS: GARAGE: 356 sq. ft, PORCH: 24 sq. ft, PATIO: 1333 sq. ft
MEASUREMENTS CALCULATED BY V1Photos.com ARE DEEMED HIGHLY RELIABLE BUT NOT GUARANTEED.



Disclaimer: Sizes and Dimensions are Approximate, Actual May Vary.

Jerry Cervantes
479-719-7772
jerryc@jda-consulting.com

