




34 North New Castle Way
Aurora, CO 80018

PRICE \$550,000




 Single Family

 2217 SQFT

 4 Beds

 4 Baths

 2 Car

 0.16 Acre



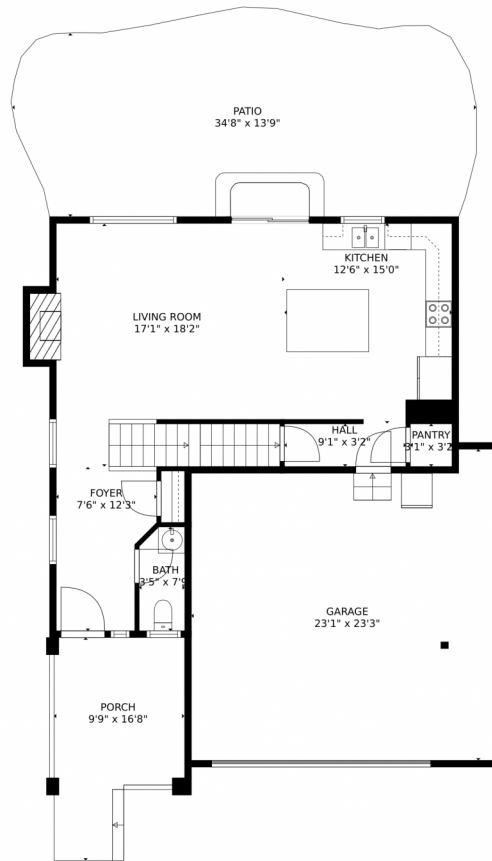
Tatyana Sturm
720-350-5909
tatyana@exitrealtydtc.com
<https://thestorckteam.com>



Scan code
for more
property
details



34 North New Castle Way, Aurora, CO 80018 – 1st Floor



TOTAL: 1985 sq. ft
Below Ground: 414 sq. ft, FLOOR 2: 659 sq. ft, FLOOR 3: 912 sq. ft
EXCLUDED AREAS: STORAGE: 105 sq. ft, ELECTRICAL ROOM: 66 sq. ft, GARAGE: 502 sq. ft,
PORCH: 132 sq. ft, PATIO: 479 sq. ft, FIREPLACE: 7 sq. ft

MEASUREMENTS CALCULATED BY V1Photos.com ARE DEEMED HIGHLY RELIABLE BUT NOT GUARANTEED.



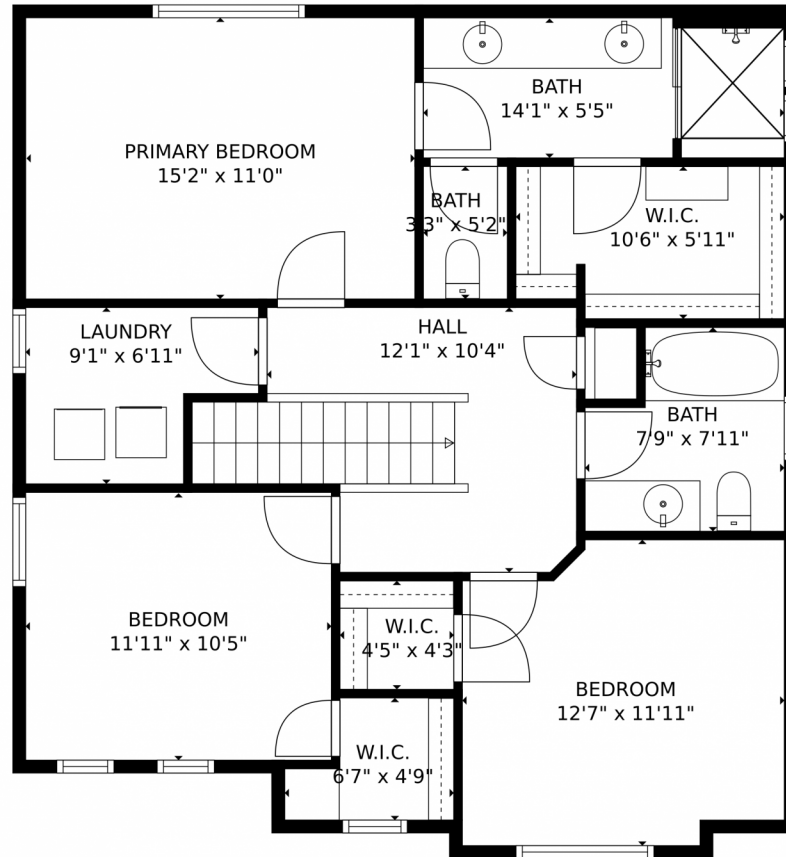
Disclaimer: Sizes and Dimensions are Approximate, Actual May Vary.



Tatyana Sturm
720-350-5909
tatyana@exitrealttydtc.com
<https://thestorckteam.com>



34 North New Castle Way, Aurora, CO 80018 – 2nd Floor



TOTAL: 1985 sq. ft
Below Ground: 414 sq. ft, FLOOR 2: 659 sq. ft, FLOOR 3: 912 sq. ft
EXCLUDED AREAS: STORAGE: 105 sq. ft, ELECTRICAL ROOM: 66 sq. ft, GARAGE: 502 sq. ft,
PORCH: 132 sq. ft, PATIO: 479 sq. ft, FIREPLACE: 7 sq. ft

MEASUREMENTS CALCULATED BY V1Photos.com ARE DEEMED HIGHLY RELIABLE BUT NOT GUARANTEED.



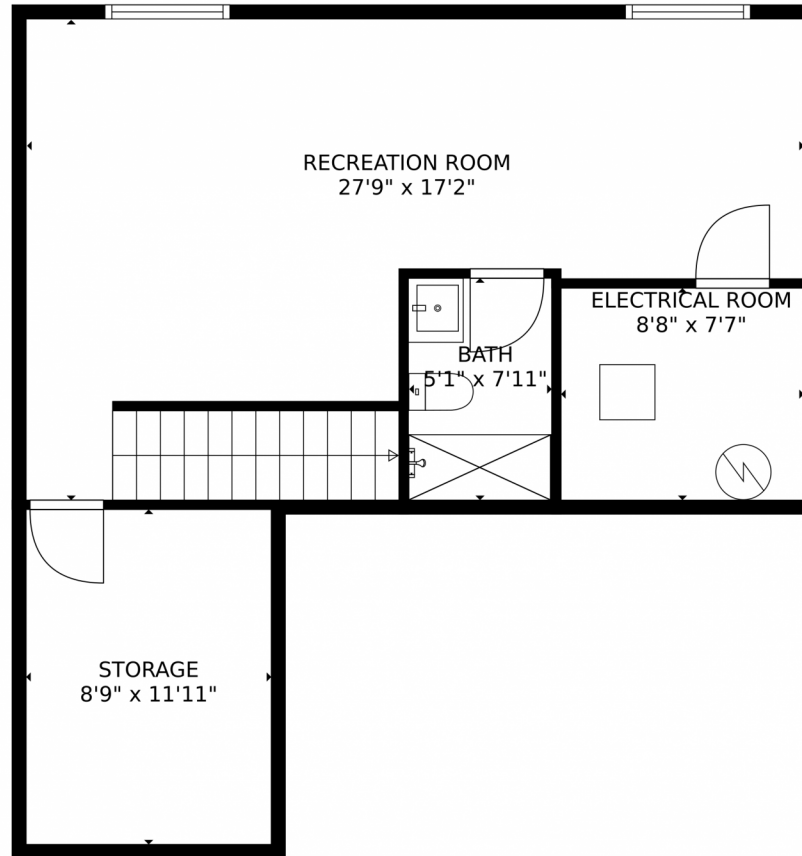
Disclaimer: Sizes and Dimensions are Approximate, Actual May Vary.



Tatyana Sturm
720-350-5909
tatyana@exitrealttydc.com
<https://thestorckteam.com>



34 North New Castle Way, Aurora, CO 80018 – Basement



TOTAL: 1985 sq. ft
Below Ground: 414 sq. ft, FLOOR 2: 659 sq. ft, FLOOR 3: 912 sq. ft
EXCLUDED AREAS: STORAGE: 105 sq. ft, ELECTRICAL ROOM: 66 sq. ft, GARAGE: 502 sq. ft,
PORCH: 132 sq. ft, PATIO: 479 sq. ft, FIREPLACE: 7 sq. ft
MEASUREMENTS CALCULATED BY V1Photos.com ARE DEEMED HIGHLY RELIABLE BUT NOT GUARANTEED.



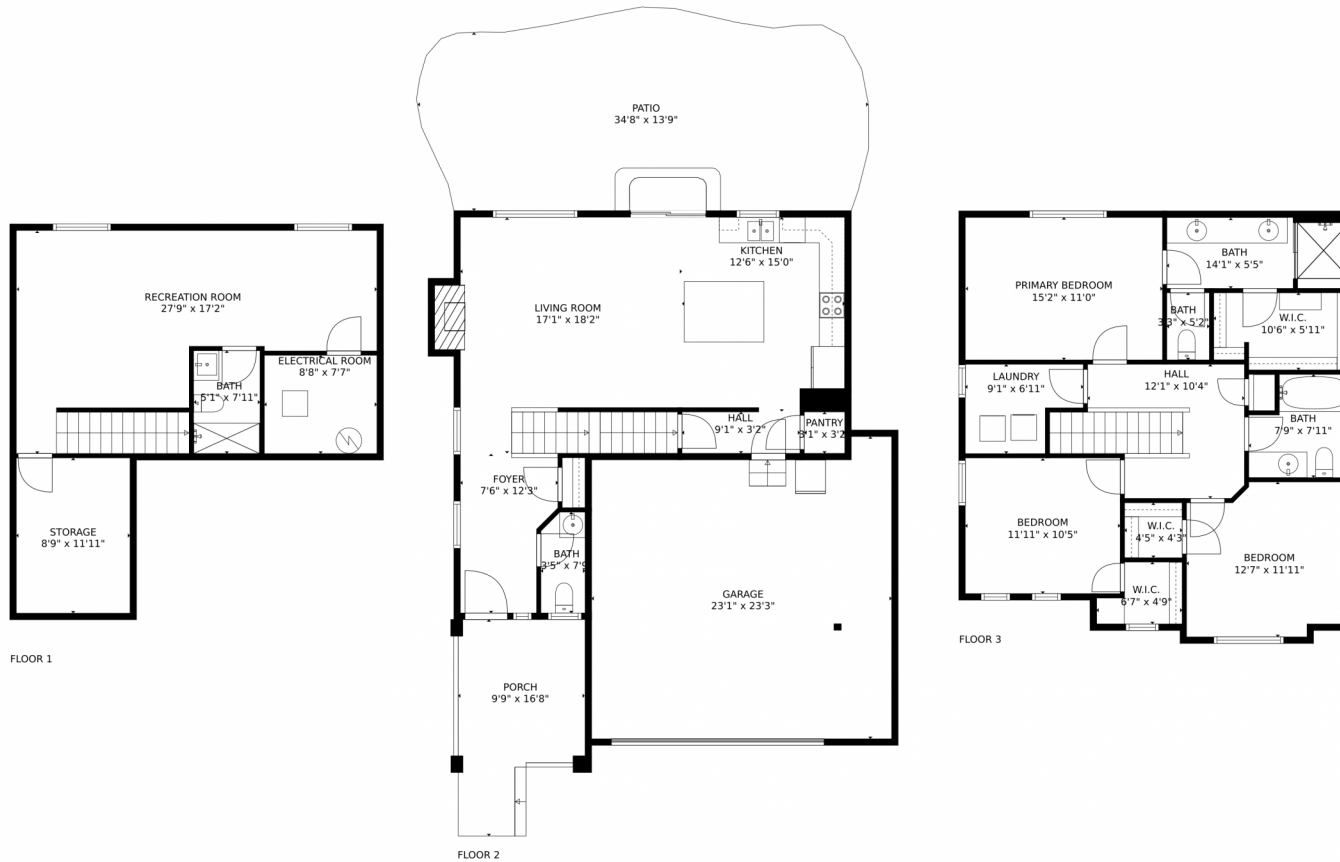
Disclaimer: Sizes and Dimensions are Approximate, Actual May Vary.



Tatyana Sturm
720-350-5909
tatyana@exitrealtydtc.com
<https://thestorckteam.com>



34 North New Castle Way, Aurora, CO 80018 – All Floors



TOTAL: 1985 sq. ft
Below Ground: 414 sq. ft, FLOOR 2: 659 sq. ft, FLOOR 3: 912 sq. ft
EXCLUDED AREAS: STORAGE: 105 sq. ft, ELECTRICAL ROOM: 66 sq. ft, GARAGE: 502 sq. ft,
PORCH: 132 sq. ft, PATIO: 479 sq. ft, FIREPLACE: 7 sq. ft

MEASUREMENTS CALCULATED BY V1Photos.com ARE DEEMED HIGHLY RELIABLE BUT NOT GUARANTEED.



Disclaimer: Sizes and Dimensions are Approximate, Actual May Vary.



Tatyana Sturm
720-350-5909
tatyana@exitrealttydtc.com
<https://thestorckteam.com>

