



16928 Molina Place
Parker, CO 80134
COMMUNITY: Clarke Farms

PRICE \$700,000



Single Family



2370 SQFT



4 Beds



2/1 Baths



3 Car



0.16 Acre



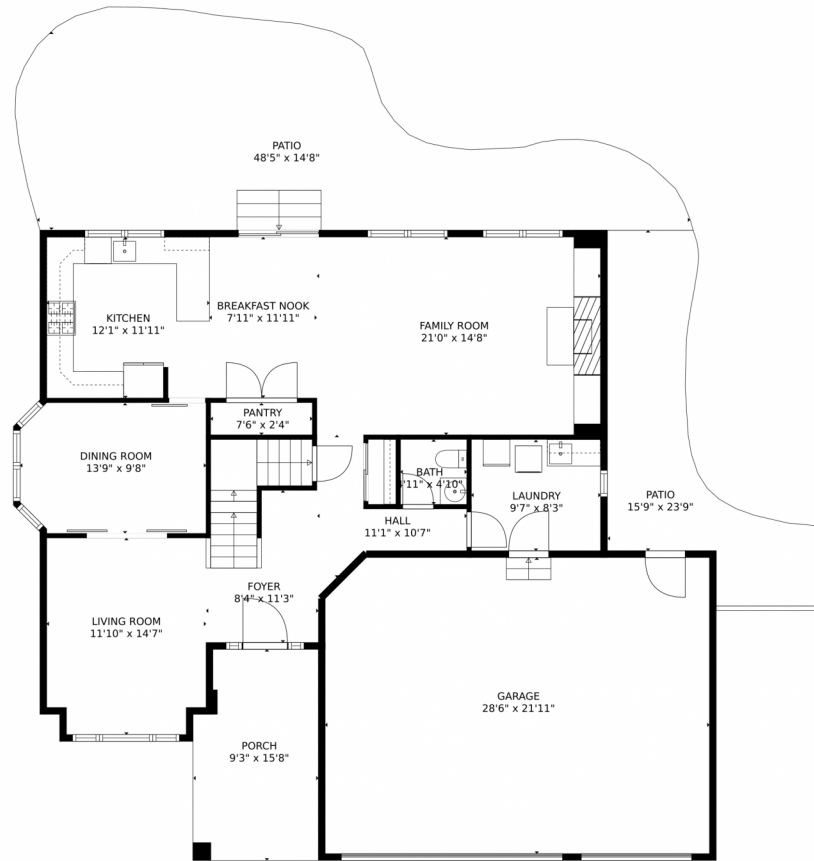
Tatyana Sturm
720-350-5909
tatyana@exitrealtydtc.com
<https://thestorckteam.com>



Scan code
for more
property
details



16928 Molina Place, Parker, CO 80134 – 1st Floor



TOTAL: 2823 sq. ft
Below Ground: 567 sq. ft, FLOOR 2: 1187 sq. ft, FLOOR 3: 1069 sq. ft
EXCLUDED AREAS: ELECTRICAL ROOM: 69 sq. ft, GARAGE: 620 sq. ft, PATIO: 752 sq. ft,
PORCH: 138 sq. ft, OPEN TO BELOW: 461 sq. ft

MEASUREMENTS CALCULATED BY V1Photos.com ARE DEEMED HIGHLY RELIABLE BUT NOT GUARANTEED.



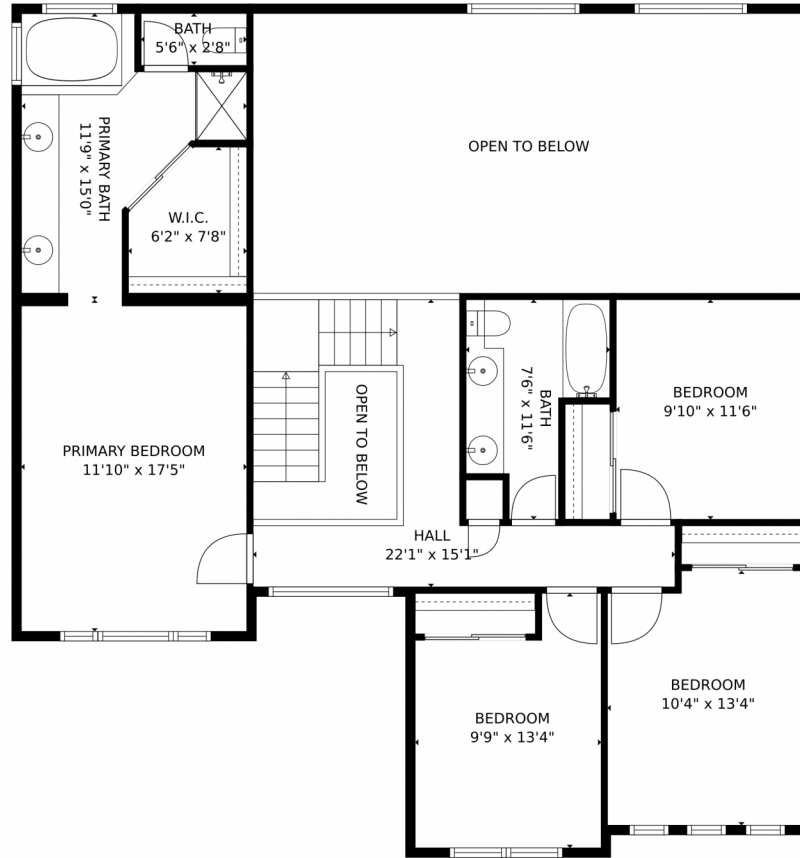
Disclaimer: Sizes and Dimensions are Approximate, Actual May Vary.



Tatyana Sturm
720-350-5909
tatyana@exitrealttydtc.com
<https://thestorckteam.com>



16928 Molina Place, Parker, CO 80134 – 2nd Floor



TOTAL: 2823 sq. ft
Below Ground: 567 sq. ft, FLOOR 2: 1187 sq. ft, FLOOR 3: 1069 sq. ft
EXCLUDED AREAS: ELECTRICAL ROOM: 69 sq. ft, GARAGE: 620 sq. ft, PATIO: 752 sq. ft,
PORCH: 138 sq. ft, OPEN TO BELOW: 461 sq. ft
MEASUREMENTS CALCULATED BY V1Photos.com ARE DEEMED HIGHLY RELIABLE BUT NOT GUARANTEED.



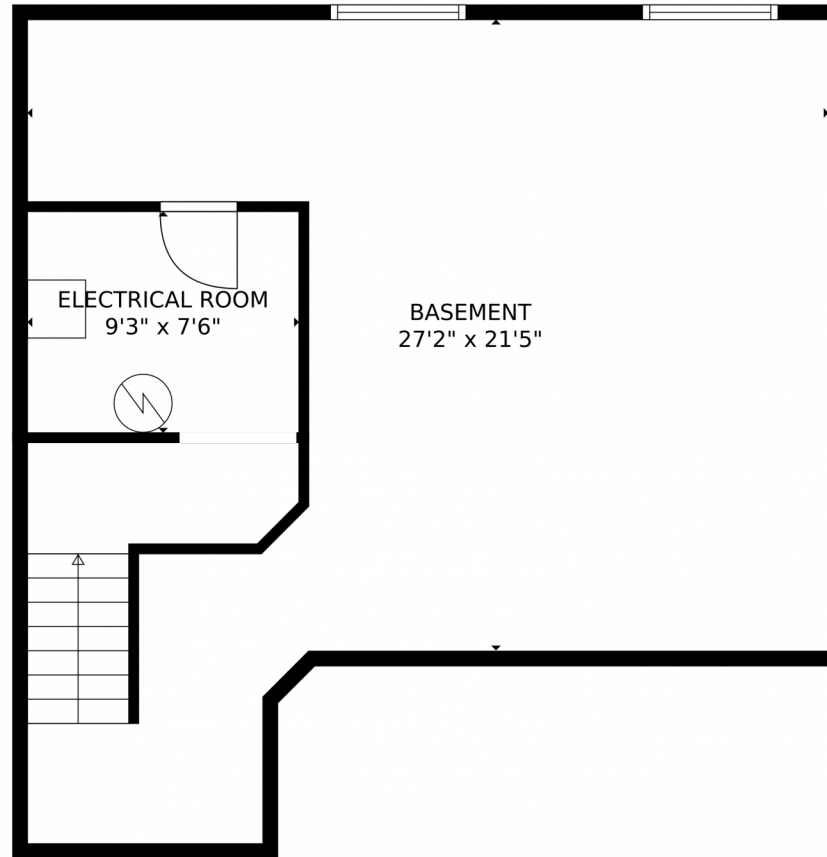
Disclaimer: Sizes and Dimensions are Approximate, Actual May Vary.



Tatyana Sturm
720-350-5909
tatyana@exitrealttydc.com
<https://thestorckteam.com>



16928 Molina Place, Parker, CO 80134 – Basement



TOTAL: 2823 sq. ft
Below Ground: 567 sq. ft, FLOOR 2: 1187 sq. ft, FLOOR 3: 1069 sq. ft
EXCLUDED AREAS: ELECTRICAL ROOM: 69 sq. ft, GARAGE: 620 sq. ft, PATIO: 752 sq. ft,
PORCH: 138 sq. ft, OPEN TO BELOW: 461 sq. ft

MEASUREMENTS CALCULATED BY V1Photos.com ARE DEEMED HIGHLY RELIABLE BUT NOT GUARANTEED.



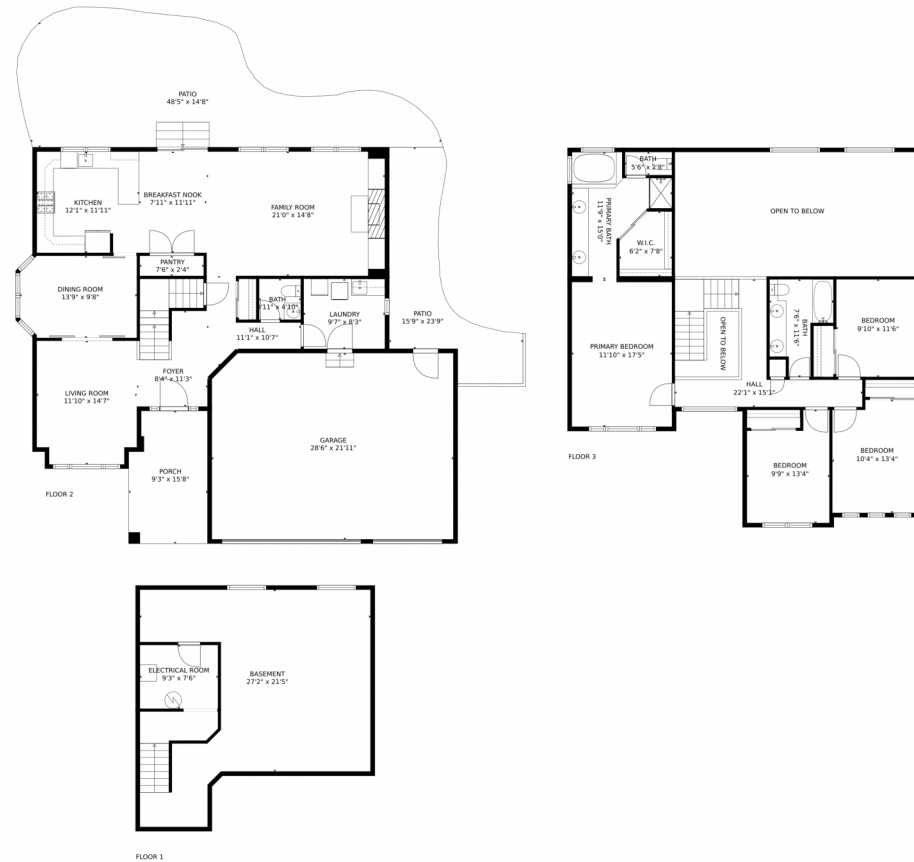
Disclaimer: Sizes and Dimensions are Approximate, Actual May Vary.



Tatyana Sturm
720-350-5909
tatyana@exitrealtydtc.com
<https://thestorckteam.com>



16928 Molina Place, Parker, CO 80134 – All Floors



TOTAL: 2823 sq. ft
Below Ground: 567 sq. ft, FLOOR 2: 1187 sq. ft, FLOOR 3: 1069 sq. ft
EXCLUDED AREAS: ELECTRICAL ROOM: 69 sq. ft, GARAGE: 620 sq. ft, PATIO: 752 sq. ft,
PORCH: 138 sq. ft, OPEN TO BELOW: 461 sq. ft

MEASUREMENTS CALCULATED BY V1Photos.com ARE DEEMED HIGHLY RELIABLE BUT NOT GUARANTEED.



Disclaimer: Sizes and Dimensions are Approximate, Actual May Vary.



Tatyana Sturm
720-350-5909
tatyana@exitrealttydc.com
<https://thestorckteam.com>

