



25431 East Ottawa Drive
 Aurora, CO 80016
 COMMUNITY: Tallyn's Reach

PRICE \$725,000



Single Family



3198 SQFT



4 Beds



3/1 Baths



2 Car



0.18 Acre



Tatyana Sturm
 720-350-5909
 tatyana@exitrealtydtc.com
 https://thestorckteam.com



Scan code
 for more
 property
 details



25431 East Ottawa Drive, Aurora, CO 80016 – Main Level



TOTAL: 2936 sq. ft
Below Ground: 513 sq. ft, FLOOR 2: 1191 sq. ft, FLOOR 3: 1232 sq. ft
EXCLUDED AREAS: ELECTRICAL ROOM: 74 sq. ft, STORAGE: 195 sq. ft, BASEMENT: 330 sq. ft,
GARAGE: 610 sq. ft, PORCH: 108 sq. ft, PATIO: 405 sq. ft,
OPEN TO BELOW: 283 sq. ft

Floor Plan Created By V1photos.com, Measurements Deamed Highly Reliable But Not Guaranteed.



Disclaimer: Sizes and Dimensions are Approximate, Actual May Vary.



Tatyana Sturm
720-350-5909
tatyana@exitrealttydtc.com
<https://thestorckteam.com>



25431 East Ottawa Drive, Aurora, CO 80016 – Second Level



TOTAL: 2936 sq. ft
Below Ground: 513 sq. ft, FLOOR 2: 1191 sq. ft, FLOOR 3: 1232 sq. ft
EXCLUDED AREAS: ELECTRICAL ROOM: 74 sq. ft, STORAGE: 195 sq. ft, BASEMENT: 330 sq. ft,
GARAGE: 610 sq. ft, PORCH: 108 sq. ft, PATIO: 405 sq. ft,
OPEN TO BELOW: 283 sq. ft

Floor Plan Created By V1photos.com. Measurements Deamed Highly Reliable But Not Guaranteed.



Disclaimer: Sizes and Dimensions are Approximate, Actual May Vary.

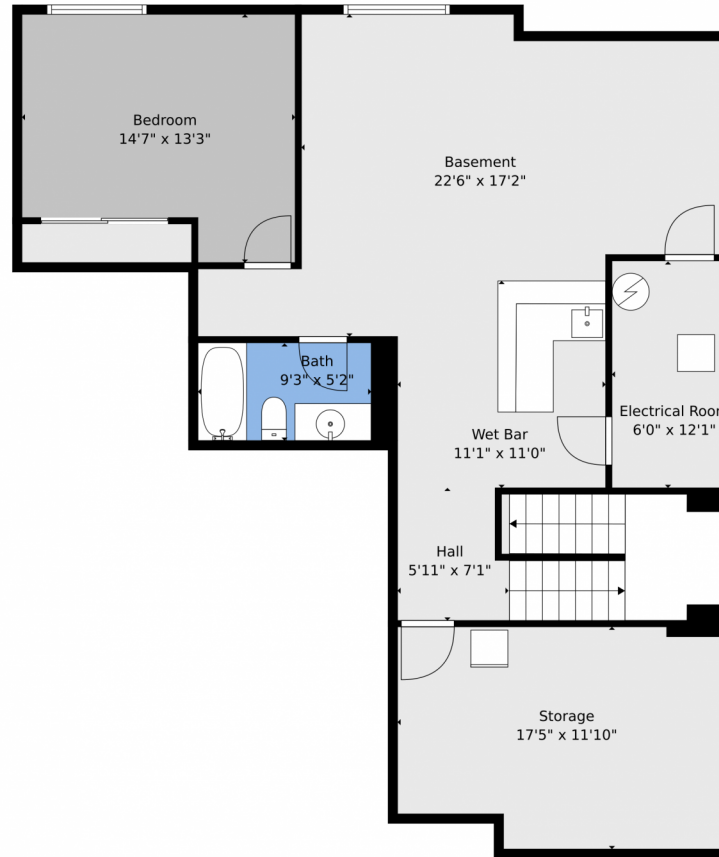


Tatyana Sturm
720-350-5909
tatyana@exitrealtydtc.com
<https://thestorckteam.com>



Scan code
for more
property
details

25431 East Ottawa Drive, Aurora, CO 80016 – Basement



TOTAL: 2936 sq. ft
Below Ground: 513 sq. ft, FLOOR 2: 1191 sq. ft, FLOOR 3: 1232 sq. ft
EXCLUDED AREAS: ELECTRICAL ROOM: 74 sq. ft, STORAGE: 195 sq. ft, BASEMENT: 330 sq. ft,
GARAGE: 610 sq. ft, PORCH: 108 sq. ft, PATIO: 405 sq. ft,
OPEN TO BELOW: 283 sq. ft.

Floor Plan Created By V1photos.com, Measurements Deamed Highly Reliable But Not Guaranteed.



Disclaimer: Sizes and Dimensions are Approximate, Actual May Vary.



Tatyana Sturm
720-350-5909
tatyana@exitrealtydtc.com
<https://thestorckteam.com>



25431 East Ottawa Drive, Aurora, CO 80016 – All Levels



TOTAL: 2936 sq. ft

Below Ground: 513 sq. ft, FLOOR 2: 1191 sq. ft, FLOOR 3: 1232 sq. ft
EXCLUDED AREAS: ELECTRICAL ROOM: 74 sq. ft, STORAGE: 195 sq. ft, BASEMENT: 330 sq. ft,
GARAGE: 610 sq. ft, PORCH: 108 sq. ft, PATIO: 405 sq. ft,
OPEN TO BELOW: 283 sq. ft

Floor Plan Created By V1photos.com, Measurements Deamed Highly Reliable But Not Guaranteed.



Disclaimer: Sizes and Dimensions are Approximate, Actual May Vary.



Tatyana Sturm
720-350-5909
tatyana@exitrealtydtc.com
<https://thestorckteam.com>



Scan code
for more
property
details

