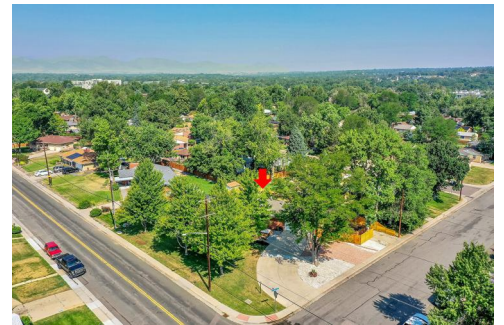





8605 Grandview Avenue
Arvada, CO 80002

PRICE \$1,000,000



 Single Family

 2879 SQFT

 6 Beds

 3 Baths

 2 Car



Tatyana Sturm
720-350-5909
tatyana@exitrealtydtc.com
<https://thestorckteam.com>

Scan code for more property details



8605 Grandview Avenue, Arvada, CO 80002 – Main Level



TOTAL: 2490 sq. ft
Below Ground: 720 sq. ft, FLOOR 2: 1770 sq. ft
EXCLUDED AREAS: STORAGE: 234 sq. ft, PORCH: 378 sq. ft, PATIO: 822 sq. ft,
GARAGE: 430 sq. ft

Floor Plan Created By V1photos.com, Measurements Deamed Highly Reliable But Not Guaranteed.



Disclaimer: Sizes and Dimensions are Approximate, Actual May Vary.



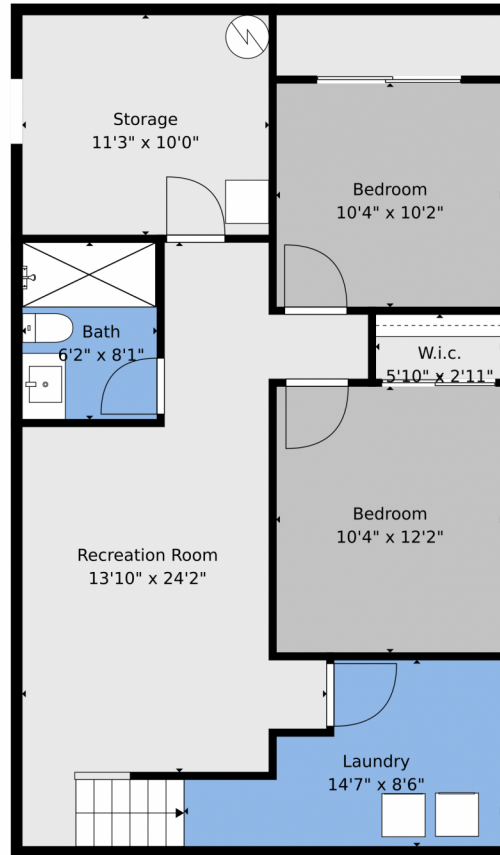
Tatyana Sturm
720-350-5909
tatyana@exitrealtydtc.com
<https://thestorckteam.com>



Scan code
for more
property
details



8605 Grandview Avenue, Arvada, CO 80002 – Basement



TOTAL: 2490 sq. ft
Below Ground: 720 sq. ft, FLOOR 2: 1770 sq. ft
EXCLUDED AREAS: STORAGE: 234 sq. ft, PORCH: 378 sq. ft, PATIO: 822 sq. ft,
GARAGE: 430 sq. ft

Floor Plan Created By V1photos.com. Measurements Deamed Highly Reliable But Not Guaranteed.

Disclaimer: Sizes and Dimensions are Approximate, Actual May Vary.



Tatyana Sturm
720-350-5909
tatyana@exitrealttydtc.com
<https://thestorckteam.com>



Scan code
for more
property
details

8605 Grandview Avenue, Arvada, CO 80002 – All Levels



TOTAL: 2490 sq. ft
Below Ground: 720 sq. ft, FLOOR 2: 1770 sq. ft
EXCLUDED AREAS: STORAGE: 234 sq. ft, PORCH: 378 sq. ft, PATIO: 822 sq. ft,
GARAGE: 430 sq. ft

Floor Plan Created By V1photos.com, Measurements Deamed Highly Reliable But Not Guaranteed.



Disclaimer: Sizes and Dimensions are Approximate, Actual May Vary.



Tatyana Sturm
720-350-5909
tatyana@exitrealttydtc.com
<https://thestorckteam.com>



Scan code
for more
property
details

