



6221 North Galena Street  
Denver, CO 80238  
COMMUNITY: Central Park



Single Family



4800 SQFT



4 Beds



0.12 Acre



Tatyana Sturm

720-350-5909

tatyana@exitrealtydtc.com

<https://thestorckteam.com>



Scan code  
for more  
property  
details



# 6221 North Galena Street, Denver, CO 80238 – Main



**TOTAL: 4528 sq. ft**  
BELOW GROUND: 2125 sq. ft, FLOOR 2: 2403 sq. ft  
EXCLUDED AREAS: UNDEFINED: 25 sq. ft, ELECTRICAL ROOM: 112 sq. ft, GARAGE: 476 sq. ft,  
PORCH: 279 sq. ft, COVERED PATIO: 142 sq. ft

Floor Plan Created By V1photos.com, Measurements Deamed Highly Reliable But Not Guaranteed.



Disclaimer: Sizes and Dimensions are Approximate, Actual May Vary.



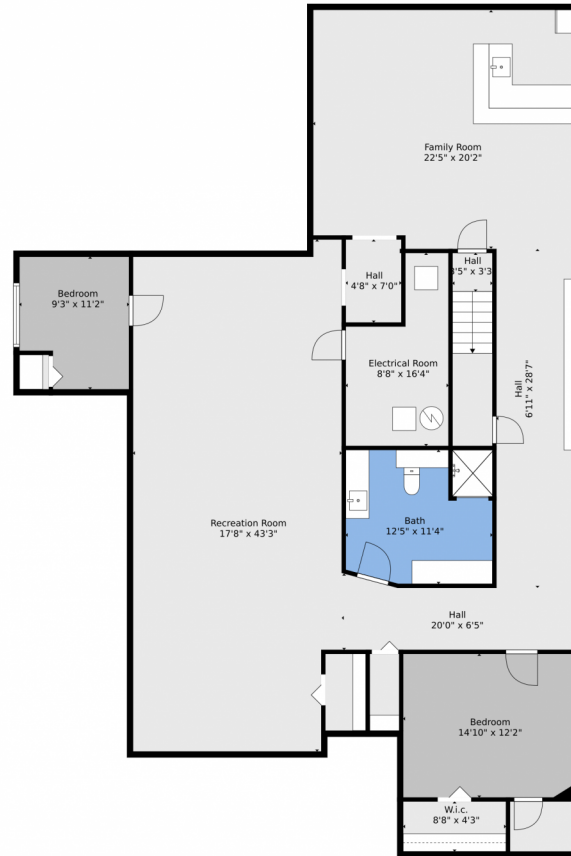
**Tatyana Sturm**  
720-350-5909  
tatyana@exitrealttydc.com  
<https://thestorckteam.com>



Scan code  
for more  
property  
details



# 6221 North Galena Street, Denver, CO 80238 – Basement



**TOTAL: 4528 sq. ft**  
BELOW GROUND: 2125 sq. ft, FLOOR 2: 2403 sq. ft  
EXCLUDED AREAS: UNDEFINED: 25 sq. ft, ELECTRICAL ROOM: 112 sq. ft, GARAGE: 476 sq. ft,  
PORCH: 279 sq. ft, COVERED PATIO: 142 sq. ft

Floor Plan Created By V1photos.com, Measurements Deamed Highly Reliable But Not Guaranteed.



Disclaimer: Sizes and Dimensions are Approximate, Actual May Vary.



**Tatyana Sturm**  
720-350-5909  
tatyana@exitrealtydtc.com  
<https://thestorckteam.com>



Scan code  
for more  
property  
details



# 6221 North Galena Street, Denver, CO 80238 – All Levels



**TOTAL: 4528 sq. ft**  
BELOW GROUND: 2125 sq. ft, FLOOR 2: 2403 sq. ft  
EXCLUDED AREAS: UNDEFINED: 25 sq. ft, ELECTRICAL ROOM: 112 sq. ft, GARAGE: 476 sq. ft,  
PORCH: 279 sq. ft, COVERED PATIO: 142 sq. ft

Floor Plan Created By V1photos.com, Measurements Deamed Highly Reliable But Not Guaranteed.



Disclaimer: Sizes and Dimensions are Approximate, Actual May Vary.



**Tatyana Sturm**  
720-350-5909  
tatyana@exitrealttydc.com  
<https://thestorckteam.com>



Scan code  
for more  
property  
details

