



15455 W Asbury Avenue  
Lakewood, CO 80228  
COMMUNITY: Solterra

MLS # 3332826

PRICE

\$1,449,000



Single Family



5808 SQFT



6 Beds



5/1 Baths



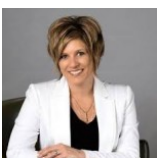
3 Car



0.16 Acre

## PROPERTY DETAILS

Immaculate Infinity built home in Solterra neighborhood. First floor master, office, indoor/outdoor space. Hardwood floors, modern staircase. Guest rooms with walk-in closets, en suite bathrooms. Fully finished basement with wine closet, wet bar, theater room. Prime location. Tesla solar system covers electric bill. Neighborhood amenities include clubhouse, gym, infinity pool. Close to C470, I-70, 285, 25. Near Red Rocks, Denver, Littleton, Bear Creek, Chatfield, Ski locations. Schedule private showing today.



**Liza Burns**

937-867-6231

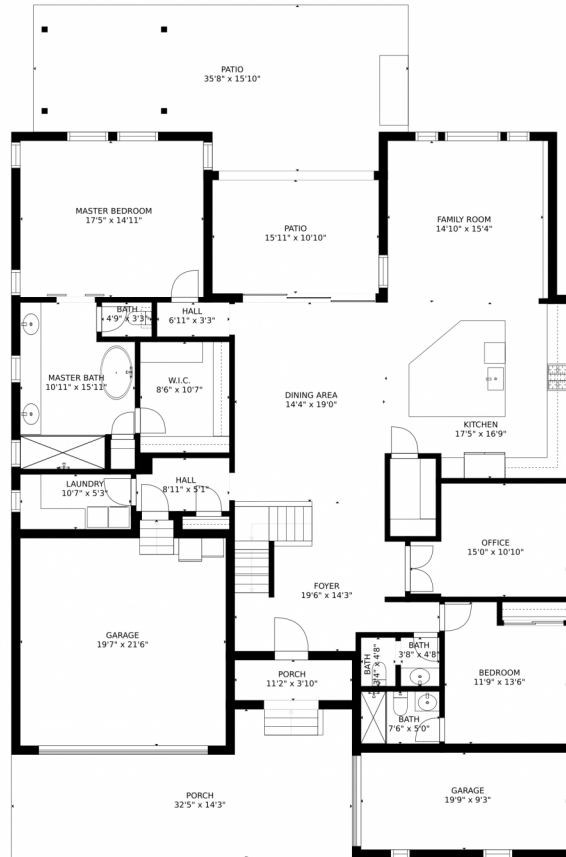
[liza@clovercircle.com](mailto:liza@clovercircle.com)

<https://clovercircle.com/>

Scan code  
for more  
property  
details



15455 W Asbury Avenue, Lakewood, CO 80228 – Main



GROSS INTERNAL AREA  
FLOOR 1: 2042 sq. ft. FLOOR 2: 2169 sq. ft  
FLOOR 3: 959 sq. ft. EXCLUDED AREAS:  
PATIO: 664 sq. ft. PORCH: 414 sq. ft  
GARAGE: 577 sq. ft  
TOTAL: 5169 sq. ft  
SIZES AND DIMENSIONS ARE APPROXIMATE, ACTUAL MAY VARY.

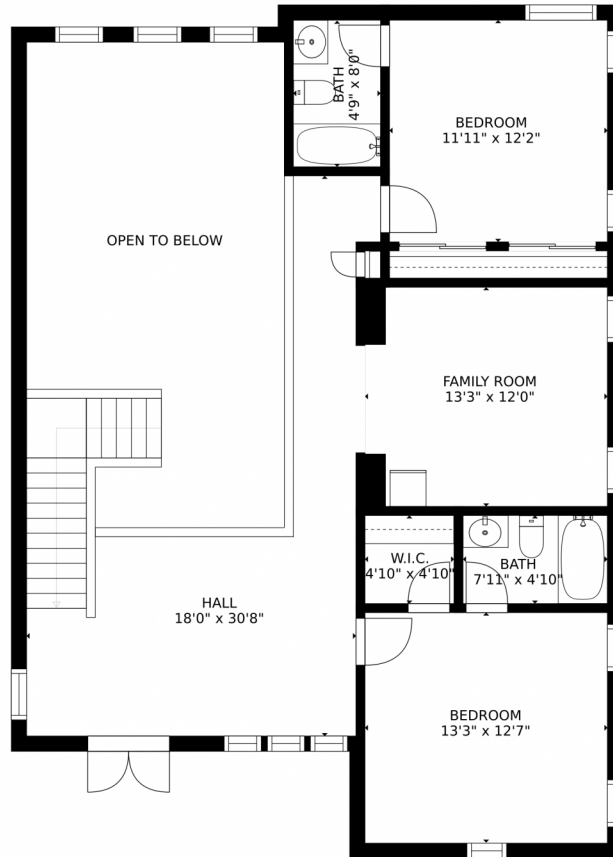
Disclaimer: Sizes and Dimensions are Approximate, Actual May Vary.



**Liza Burns**  
937-867-6231  
liza@clovercircle.com  
<https://clovercircle.com/>



15455 W Asbury Avenue, Lakewood, CO 80228 – 2nd Level



GROSS INTERNAL AREA  
FLOOR 1: 2042 sq. ft. FLOOR 2: 2169 sq. ft.  
FLOOR 3: 959 sq. ft. EXCLUDED AREAS:  
PATIO: 664 sq. ft. PORCH: 414 sq. ft.  
GARAGE: 577 sq. ft.  
TOTAL: 5169 sq. ft.  
SIZES AND DIMENSIONS ARE APPROXIMATE, ACTUAL MAY VARY.

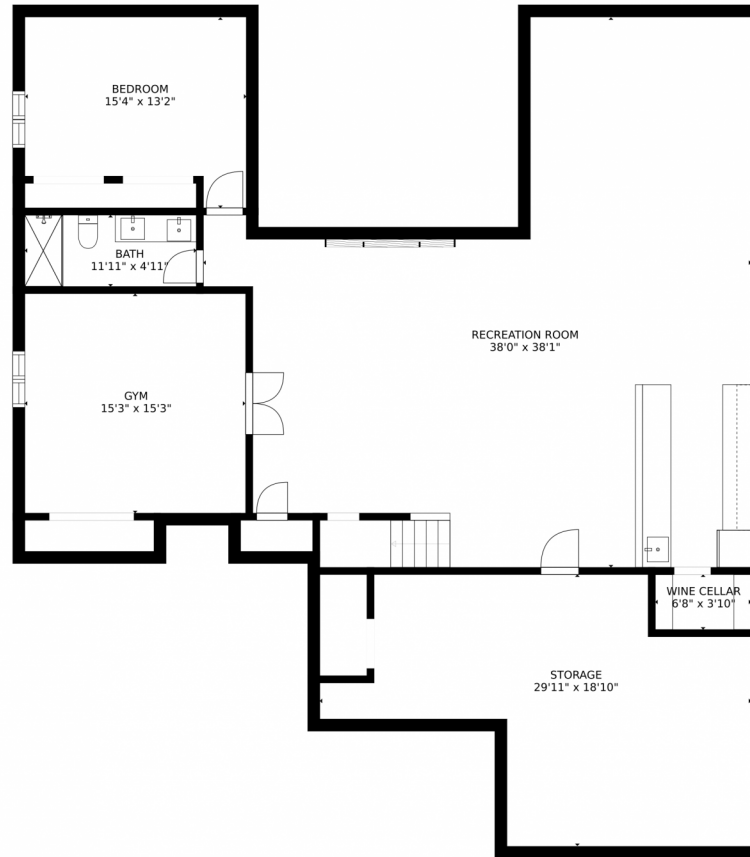
Disclaimer: Sizes and Dimensions are Approximate, Actual May Vary.



**Liza Burns**  
937-867-6231  
liza@clovercircle.com  
<https://clovercircle.com/>



# 15455 W Asbury Avenue, Lakewood, CO 80228 – Lower Level



GROSS INTERNAL AREA  
FLOOR 1: 2042 sq. ft. FLOOR 2: 2169 sq. ft.  
FLOOR 3: 959 sq. ft. EXCLUDED AREAS:  
PATIO: 664 sq. ft. PORCH: 414 sq. ft.  
GARAGE: 577 sq. ft.  
TOTAL: 5169 sq. ft.  
SIZES AND DIMENSIONS ARE APPROXIMATE, ACTUAL MAY VARY.

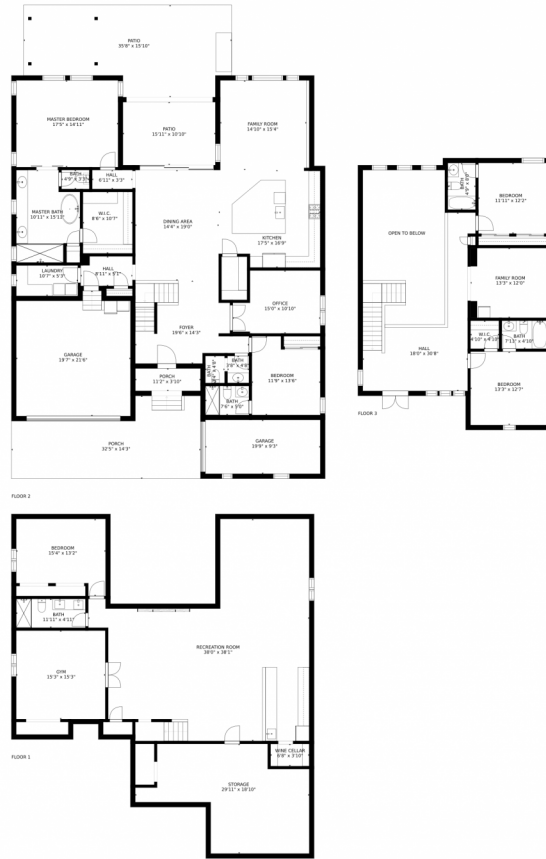
Disclaimer: Sizes and Dimensions are Approximate, Actual May Vary.



**Liza Burns**  
937-867-6231  
liza@clovercircle.com  
<https://clovercircle.com/>



# 15455 W Asbury Avenue, Lakewood, CO 80228 – All Levels



GROSS INTERNAL AREA  
FLOOR 1: 2042 sq. ft, FLOOR 2: 2169 sq. ft  
FLOOR 3: 959 sq. ft, EXCLUDED AREAS:  
PATIO: 664 sq. ft, PORCH: 414 sq. ft  
GARAGE: 577 sq. ft  
TOTAL: 5169 sq. ft  
SIZES AND DIMENSIONS ARE APPROXIMATE, ACTUAL MAY VARY.

Disclaimer: Sizes and Dimensions are Approximate, Actual May Vary.



**Liza Burns**  
937-867-6231  
liza@clovercircle.com  
<https://clovercircle.com/>



Scan code  
for more  
property  
details