

COMPASS

15526 Red Deer Drive  
Morrison, CO 80465  
COMMUNITY: Lyons Ridge

MLS # 4458557  
PRICE \$1,595,000



Single Family



3438 SQFT



4 Beds



3 Baths



2 Car



0.15 Acre

## PROPERTY DETAILS

Welcome to this beautiful craftsman-style home in Morrison. With 4 bedrooms, 3 full bathrooms, and 3000 sqft of living space, this property offers plenty of room for a growing family or for hosting guests.

The property features a well-maintained front lawn, a corridor with wood-type flooring, and a spacious living room filled with natural light. The kitchen is a chef's dream, with stainless steel appliances and light countertops. The bedrooms are cozy and comfortable, with hardwood flooring and ceiling fans.

Outside, you'll find a deck with a mountain view, perfect for enjoying the beautiful Colorado scenery. The property also features a garage and a fenced backyard. Located in the peaceful community of Morrison, this property offers a quiet and serene environment while still being within easy reach of amenities and attractions.



COMPASS

Clare Day

720-341-7456

homes@clare-day.com

<https://www.clareday.com/>



Tom Day

303-845-0896

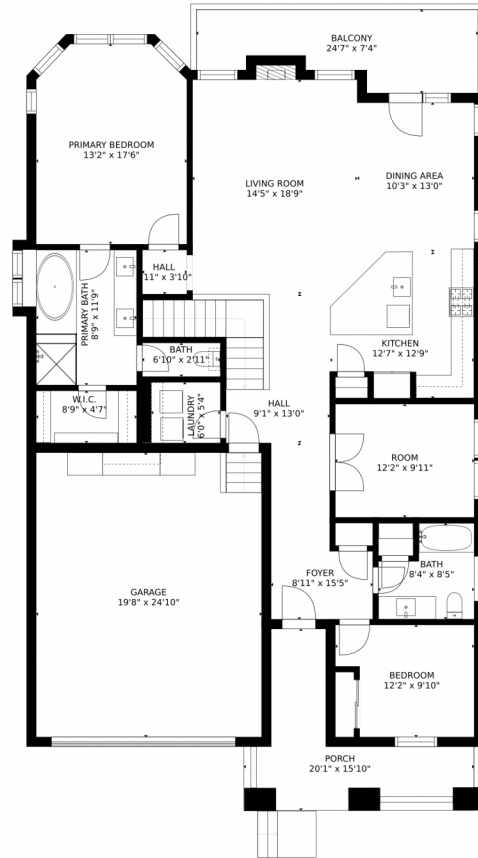
tom@clare-day.com



Scan code  
for more  
property  
details



# 15526 Red Deer Drive, Morrison, CO 80465 – Main Level



### Estimated areas

GLA FLOOR 1: 0 sq. ft, excluded 2073 sq. ft  
GLA FLOOR 2: 1782 sq. ft, excluded 863 sq. ft  
Total GLA 1782 sq. ft, total scanned area 4718 sq. ft

SIZES AND DIMENSIONS ARE APPROXIMATE, ACTUAL MAY VARY.



Disclaimer: Sizes and Dimensions are Approximate, Actual May Vary.

COMPASS

**Clare Day**  
720-341-7456  
homes@clare-day.com  
<https://www.clareday.com/>



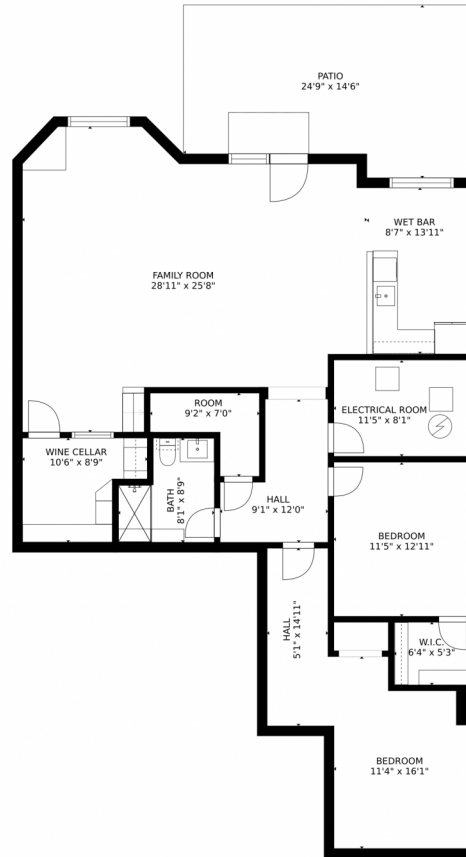
**Tom Day**  
303-845-0896  
tom@clare-day.com



Scan code  
for more  
property  
details



# 15526 Red Deer Drive, Morrison, CO 80465 – Lower Level



#### Estimated areas

GLA FLOOR 1: 0 sq. ft, excluded 2073 sq. ft  
GLA FLOOR 2: 1782 sq. ft, excluded 863 sq. ft  
Total GLA 1782 sq. ft, total scanned area 4718 sq. ft

SIZES AND DIMENSIONS ARE APPROXIMATE, ACTUAL MAY VARY.

Disclaimer: Sizes and Dimensions are Approximate, Actual May Vary.

COMPASS

**Clare Day**  
720-341-7456  
homes@clare-day.com  
<https://www.clareday.com/>



**Tom Day**  
303-845-0896  
tom@clare-day.com



Scan code  
for more  
property  
details





# 15526 Red Deer Drive, Morrison, CO 80465 – All Levels



### Estimated areas

GLA FLOOR 1: 0 sq. ft, excluded 2073 sq. ft  
GLA FLOOR 2: 1782 sq. ft, excluded 863 sq. ft  
Total GLA 1782 sq. ft, total scanned area 4718 sq. ft

SIZES AND DIMENSIONS ARE APPROXIMATE, ACTUAL MAY VARY.



Disclaimer: Sizes and Dimensions are Approximate, Actual May Vary.

COMPASS

**Clare Day**  
720-341-7456  
homes@clare-day.com  
<https://www.clareday.com/>



**Tom Day**  
303-845-0896  
tom@clare-day.com



Scan code  
for more  
property  
details

