



 Single Family  5500 SQFT

## PROPERTY DETAILS

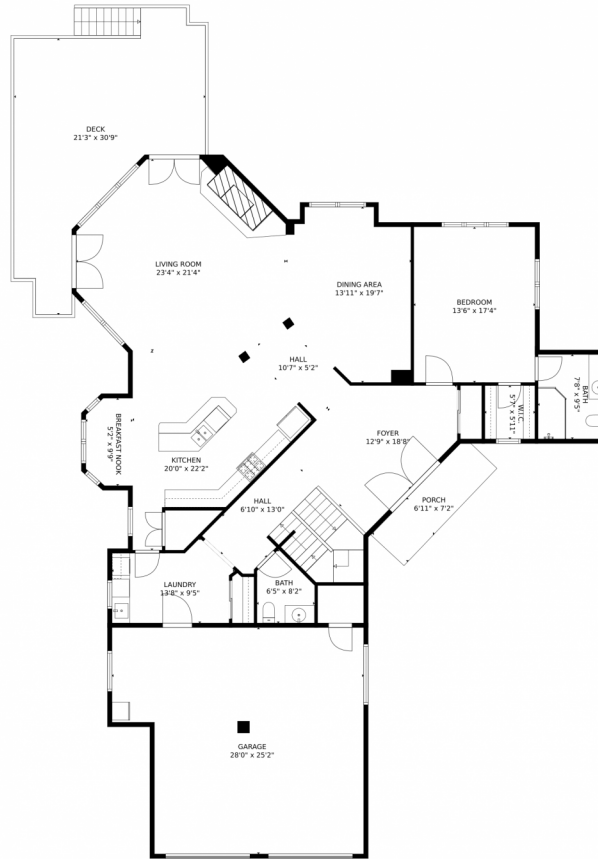
Welcome to 25 Pine Meadows Lane, a stunning single-family home located in Keystone, CO. This impressive property offers 5500 sqft of living space, providing ample room for you and your family to enjoy. With a log cabin facade, a yard with a deck and outdoor fireplace, and breathtaking mountain and water views, this home is a true gem. Inside, you'll find spacious bedrooms, beautifully appointed bathrooms, and stylish living spaces. The kitchen is a chef's dream, with pendant lighting, brown cabinets, and stainless steel appliances. Don't miss the opportunity to make this exceptional property your forever home. Schedule a showing today!



**Laura Karden**  
970-389-1543  
laura@idealascent.com



# 25 Pine Meadows Lane, Keystone, CO 80435 – Main Level



GROSS INTERNAL AREA  
Below Ground: 1072 sq. ft, FLOOR 2: 1983 sq. ft, FLOOR 3: 1859 sq. ft  
EXCLUDED AREAS: ELECTRICAL ROOM: 108 sq. ft, STORAGE: 216 sq. ft, GARAGE: 637 sq. ft,  
PORCH: 74 sq. ft, DECK: 435 sq. ft, OPEN TO BELOW: 433 sq. ft,  
BALCONY: 56 sq. ft  
TOTAL: 4914 sq. ft  
MEASUREMENTS CALCULATED BY V1Photos.com ARE DEEMED HIGHLY RELIABLE BUT NOT GUARANTEED.



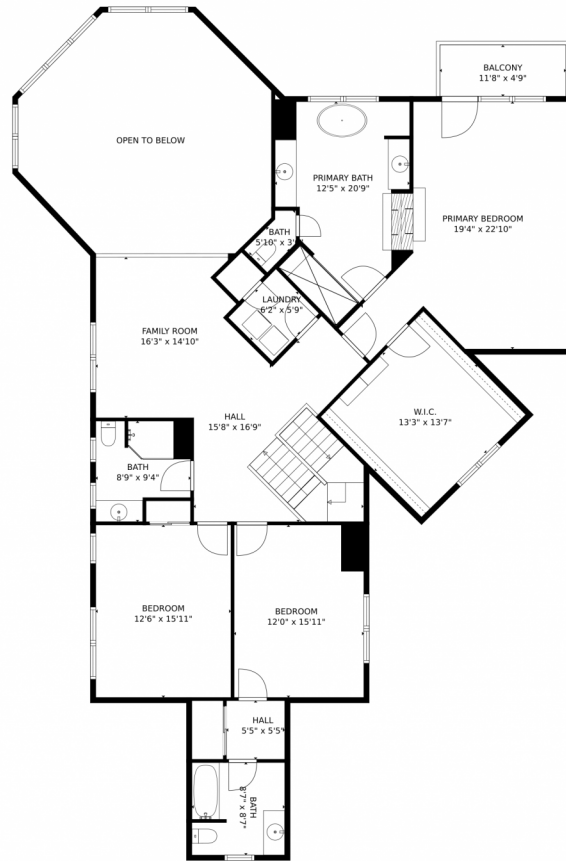
Disclaimer: Sizes and Dimensions are Approximate, Actual May Vary.



**Laura Karden**  
970-389-1543  
laura@idealascent.com



# 25 Pine Meadows Lane, Keystone, CO 80435 – Upper Level



GROSS INTERNAL AREA  
Below Ground: 1072 sq. ft, FLOOR 2: 1983 sq. ft, FLOOR 3: 1859 sq. ft  
EXCLUDED AREAS: ELECTRICAL ROOM: 108 sq. ft, STORAGE: 216 sq. ft, GARAGE: 637 sq. ft.  
PORCH: 74 sq. ft, DECK: 435 sq. ft, OPEN TO BELOW: 433 sq. ft.  
BALCONY: 56 sq. ft  
TOTAL: 4914 sq. ft  
MEASUREMENTS CALCULATED BY V1Photos.COM ARE DEEMED HIGHLY RELIABLE BUT NOT GUARANTEED.



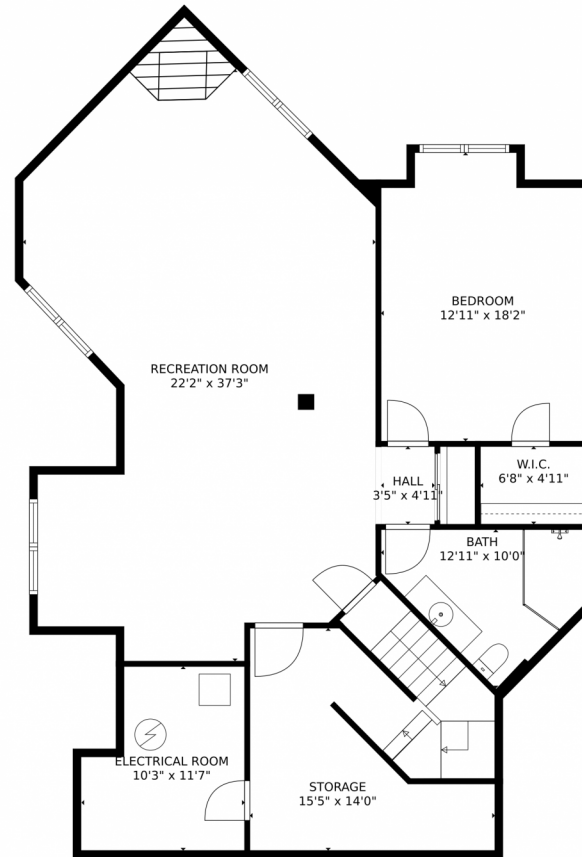
Disclaimer: Sizes and Dimensions are Approximate, Actual May Vary.



Laura Karden  
970-389-1543  
laura@idealascent.com



# 25 Pine Meadows Lane, Keystone, CO 80435 – Lower Level



GROSS INTERNAL AREA  
Below Ground: 1072 sq. ft, FLOOR 2: 1983 sq. ft, FLOOR 3: 1859 sq. ft  
EXCLUDED AREAS: ELECTRICAL ROOM: 108 sq. ft, STORAGE: 216 sq. ft, GARAGE: 637 sq. ft,  
PORCH: 74 sq. ft, DECK: 435 sq. ft, OPEN TO BELOW: 433 sq. ft,  
BALCONY: 56 sq. ft  
TOTAL: 4914 sq. ft  
MEASUREMENTS CALCULATED BY V1Photos.com ARE DEEMED HIGHLY RELIABLE BUT NOT GUARANTEED.

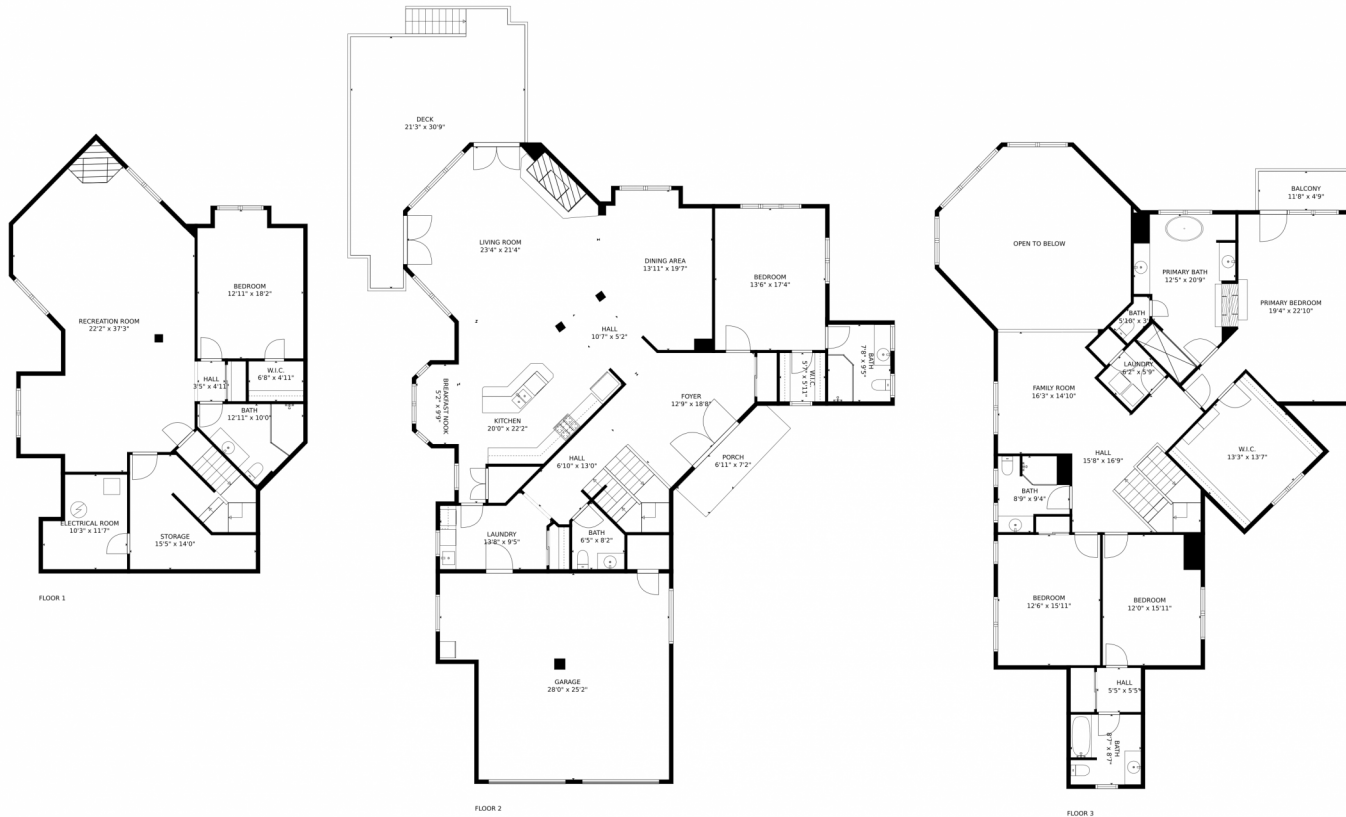
Disclaimer: Sizes and Dimensions are Approximate, Actual May Vary.



**Laura Karden**  
970-389-1543  
laura@idealascent.com



# 25 Pine Meadows Lane, Keystone, CO 80435 – All Levels



GROSS INTERNAL AREA  
 Below Ground: 1072 sq. ft, FLOOR 2: 1983 sq. ft, FLOOR 3: 1859 sq. ft  
 EXCLUDED AREAS: ELECTRICAL ROOM: 108 sq. ft, STORAGE: 216 sq. ft, GARAGE: 637 sq. ft.  
 PORCH: 74 sq. ft, DECK: 435 sq. ft, OPEN TO BELOW: 433 sq. ft.  
 BALCONY: 56 sq. ft  
 TOTAL: 4914 sq. ft  
 MEASUREMENTS CALCULATED BY V1Photos.COM ARE DEEMED HIGHLY RELIABLE BUT NOT GUARANTEED.



Disclaimer: Sizes and Dimensions are Approximate, Actual May Vary.



**Laura Karden**  
 970-389-1543  
 laura@idealascent.com

