



Single Family

4366 SQFT

6 Beds

3/1 Baths

PROPERTY DETAILS

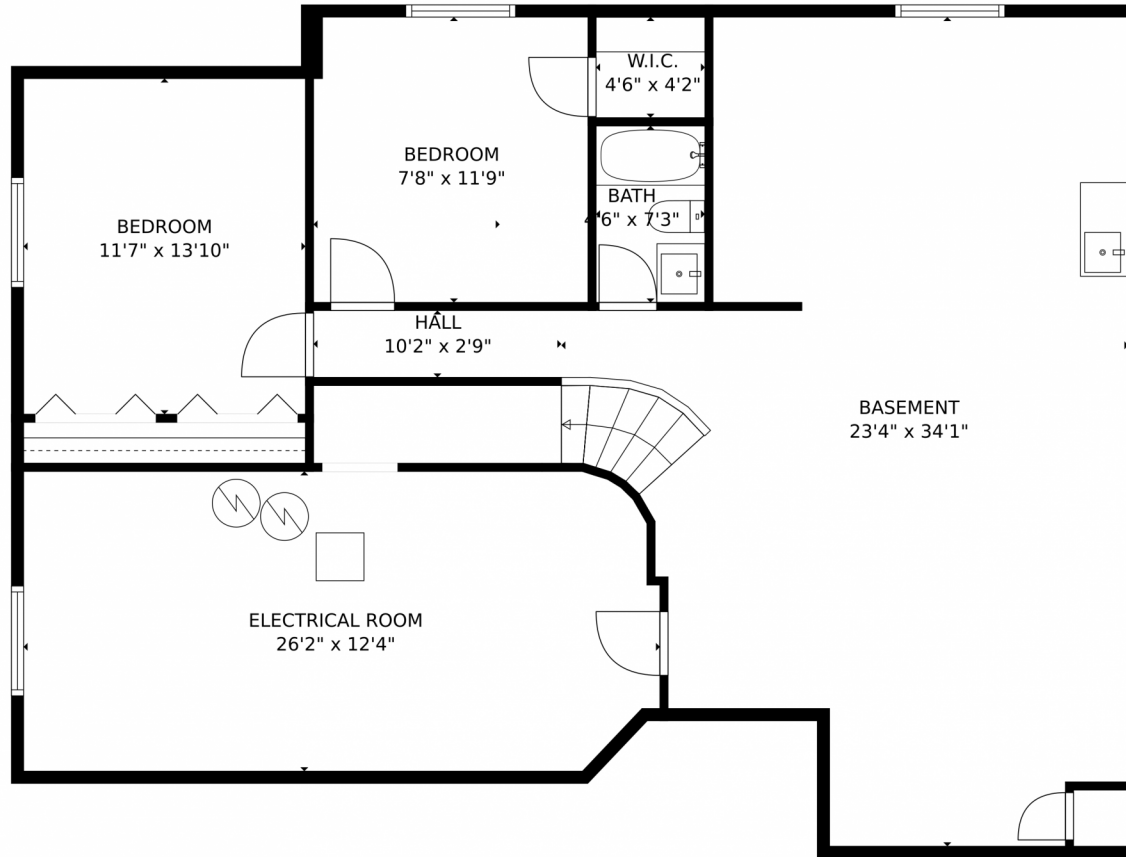
Discover the extraordinary 2425 Vanreen Drive in Colorado Springs, CO! This spacious Single Family home offers 6 bedrooms, 3 full bathrooms, and a generous 4366 sqft of living space. With tasteful finishes and modern amenities, this property is perfect for those seeking a comfortable and stylish lifestyle. Located in a desirable community with nearby parks, schools, and amenities, this home is an opportunity not to be missed.



Taylor Haas
 303-665-7368
 taylorh@coloradorpm.com
<https://www.coloradorpm.com/available-rental-properties-denver>



2425 Vanreen Drive, Colorado Springs, CO 80919 – Basement



GROSS INTERNAL AREA
Below Ground: 1081 sq. ft, FLOOR 2: 1546 sq. ft, FLOOR 3: 1386 sq. ft
EXCLUDED AREAS: ELECTRICAL ROOM: 313 sq. ft, GARAGE: 559 sq. ft, PORCH: 110 sq. ft,
DECK: 291 sq. ft, OPEN TO BELOW: 256 sq. ft
TOTAL: 4013 sq. ft
MEASUREMENTS CALCULATED BY V1Photos.com ARE DEEMED HIGHLY RELIABLE BUT NOT GUARANTEED.



Disclaimer: Sizes and Dimensions are Approximate, Actual May Vary.



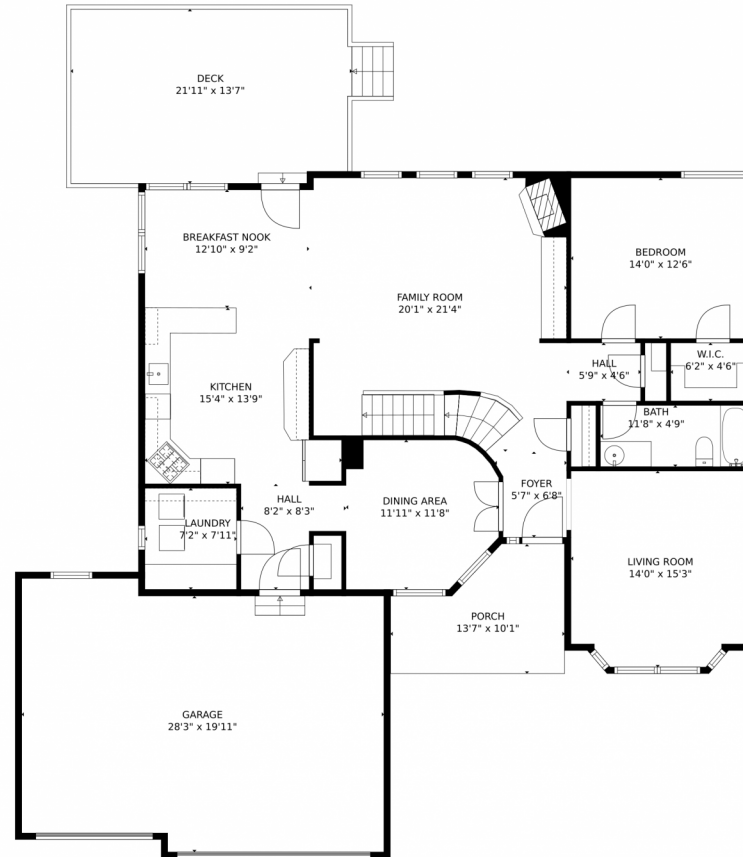
Taylor Haas
303-665-7368
taylorh@coloradorpm.com
<https://www.coloradorpm.com/available-rental-properties-denver>



Scan code
for more
property
details



2425 Vanreen Drive, Colorado Springs, CO 80919 – Main Level



GROSS INTERNAL AREA
Below Ground: 1081 sq. ft, FLOOR 2: 1546 sq. ft, FLOOR 3: 1386 sq. ft
EXCLUDED AREAS: ELECTRICAL ROOM: 313 sq. ft, GARAGE: 559 sq. ft, PORCH: 110 sq. ft,
DECK: 291 sq. ft, OPEN TO BELOW: 256 sq. ft
TOTAL: 4013 sq. ft
MEASUREMENTS CALCULATED BY V1Photos.com ARE DEEMED HIGHLY RELIABLE BUT NOT GUARANTEED.



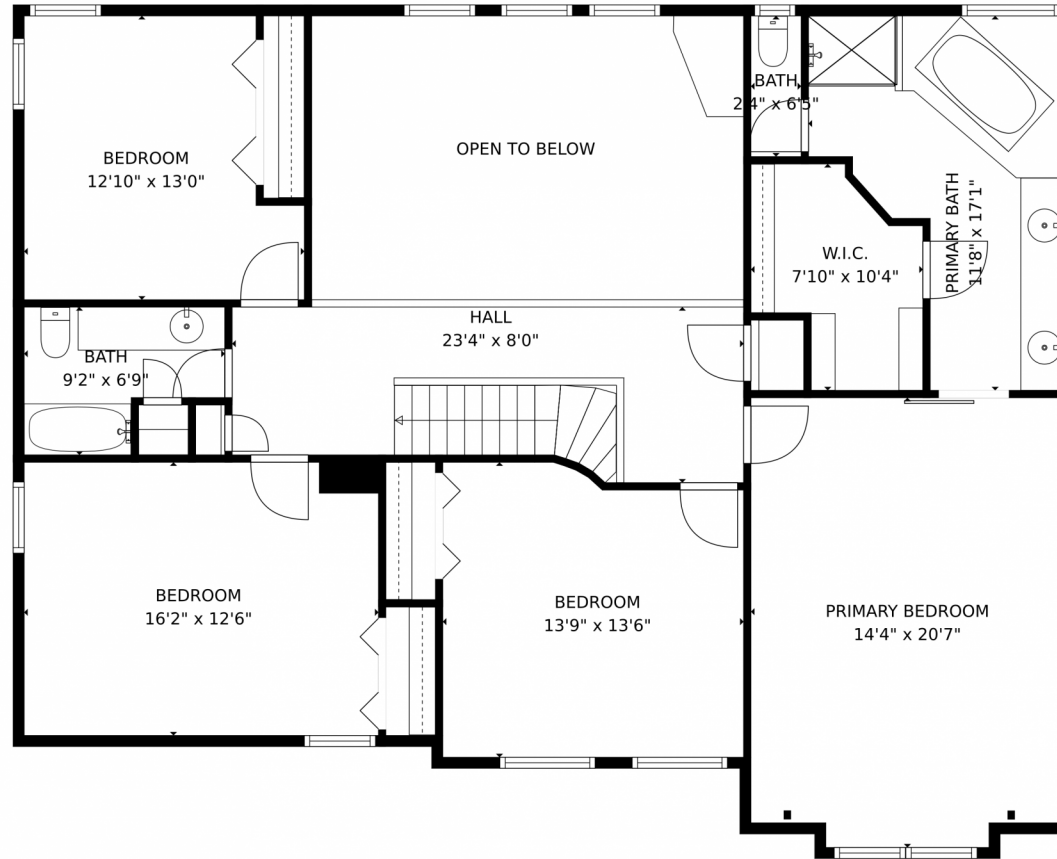
Disclaimer: Sizes and Dimensions are Approximate, Actual May Vary.



Taylor Haas
303-665-7368
taylorh@coloradorpm.com
<https://www.coloradorpm.com/available-rental-properties-denv>



2425 Vanreen Drive, Colorado Springs, CO 80919 – Upper Level



GROSS INTERNAL AREA
Below Ground: 1081 sq. ft, FLOOR 2: 1546 sq. ft, FLOOR 3: 1386 sq. ft
EXCLUDED AREAS: ELECTRICAL ROOM: 313 sq. ft, GARAGE: 559 sq. ft, PORCH: 110 sq. ft,
DECK: 291 sq. ft, OPEN TO BELOW: 256 sq. ft
TOTAL: 4013 sq. ft
MEASUREMENTS CALCULATED BY V1Photos.com ARE DEEMED HIGHLY RELIABLE BUT NOT GUARANTEED.

Disclaimer: Sizes and Dimensions are Approximate, Actual May Vary.



Taylor Haas
303-665-7368
taylorh@coloradorpm.com
<https://www.coloradorpm.com/available-rental-properties-denver>



2425 Vanreen Drive, Colorado Springs, CO 80919 – All Levels



GROSS INTERNAL AREA
Below Ground: 1081 sq. ft, FLOOR 2: 1546 sq. ft, FLOOR 3: 1386 sq. ft
EXCLUDED AREAS: ELECTRICAL ROOM: 313 sq. ft, GARAGE: 559 sq. ft, PORCH: 110 sq. ft,
DECK: 291 sq. ft, OPEN TO BELOW: 256 sq. ft
TOTAL: 4013 sq. ft
MEASUREMENTS CALCULATED BY V1Photos.com ARE DEEMED HIGHLY RELIABLE BUT NOT GUARANTEED.



Disclaimer: Sizes and Dimensions are Approximate, Actual May Vary.



Taylor Haas
303-665-7368
taylorh@coloradorpm.com
<https://www.coloradorpm.com/available-rental-properties-denv>



Scan code
for more
property
details

