

Sloans Lake Perfection



Townhouse 1500 SQFT 3 Beds 3/1 Baths 1 Car

PROPERTY DETAILS

Sloans Lake - A 2 Block Walk! Stunning, newer, attached home in excellent condition, with no HOA! Open, bright, neutral colors throughout. Spacious kitchen with gas stove, subway tile, hardwood floors, nice cabinets, pantry space and lots of style! Private patio with access to the living room. Convenient half bath and mud room area off of the attached oversized one car garage, loving the direct access into the house! The primary bedroom is good sized, with a large closet, Barn door feature, wonderful private bath. Second bedroom with ensuite, perfect guest suite. Don't miss the upper level with the third bedroom or tranquil home office with mountain views. Full bath on this level is key for the space and access to the roof top patio that is spacious, large enough for all of your entertaining and gardening needs, all with city and mountain views! Need storage? The basement offers plenty of storage space, about 5 feet tall. Know Sloans Lake? Let's explore! The Alamo Drafthouse, Little Man's Ice Cream, Brew Culture Coffee, Side Pony and the swanky new Vatos Tacos and Tequila are all within easy walking



Valerie Skorka Westmark
303-981-0950
valeriewestmark@gmail.com



Scan code
for more
property
details

distance. In fact, along with the park, there are 25 restaurants and shops all just blocks away! Don't miss this opportunity to be in this high demand Sloans Lake area, quiet and private! Easy access to Downtown or the West side of town and the mountains!



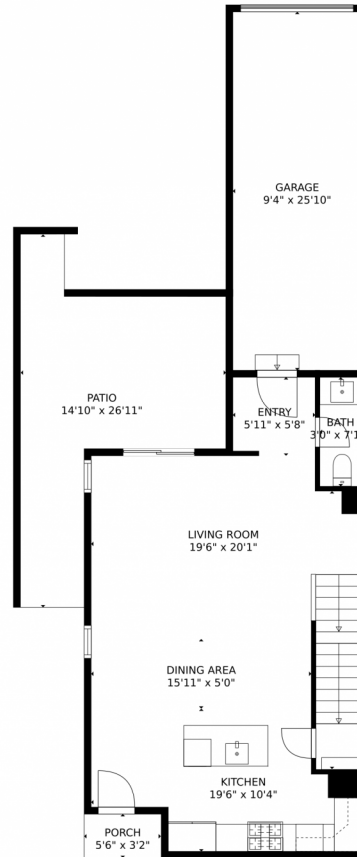
Valerie Skorka Westmark
303-981-0950
valeriewestmark@gmail.com



Scan code
for more
property
details



1525 Tennyson Street, Denver, CO 80204 – Main Level



GROSS INTERNAL AREA
Below Ground: 0 sq. ft, FLOOR 2: 593 sq. ft, FLOOR 3: 524 sq. ft, FLOOR 4: 245 sq. ft
EXCLUDED AREAS: UNFINISHED BASEMENT: 584 sq. ft, GARAGE: 241 sq. ft, PORCH: 18 sq. ft,
PATIO: 230 sq. ft, BALCONY: 234 sq. ft
TOTAL: 1362 sq. ft
MEASUREMENTS CALCULATED BY V1Photos.COM ARE DEEMED HIGHLY RELIABLE BUT NOT GUARANTEED.



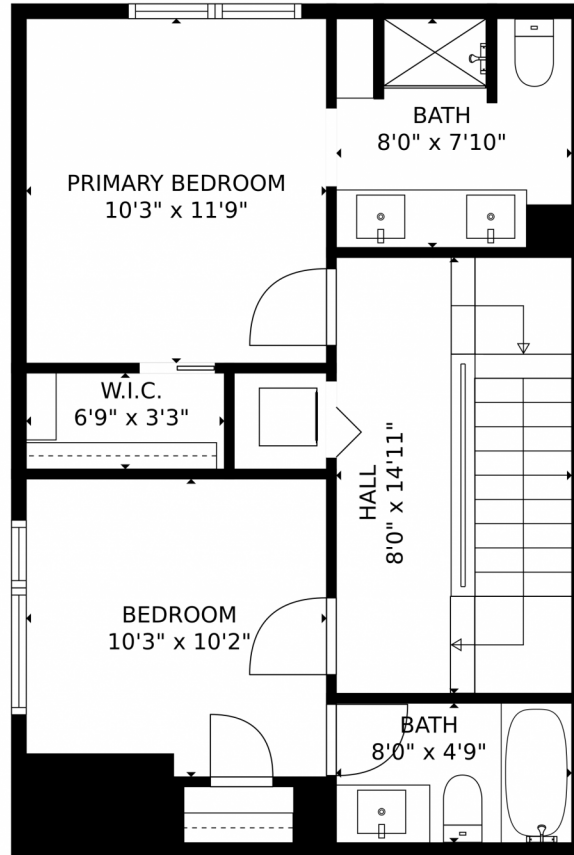
Disclaimer: Sizes and Dimensions are Approximate, Actual May Vary.



Valerie Skorka Westmark
303-981-0950
valeriewestmark@gmail.com



1525 Tennyson Street, Denver, CO 80204 – 2nd Level



GROSS INTERNAL AREA
Below Ground: 0 sq. ft, FLOOR 2: 593 sq. ft, FLOOR 3: 524 sq. ft, FLOOR 4: 245 sq. ft
EXCLUDED AREAS: UNFINISHED BASEMENT: 584 sq. ft, GARAGE: 241 sq. ft, PORCH: 18 sq. ft,
PATIO: 230 sq. ft, BALCONY: 234 sq. ft
TOTAL: 1362 sq. ft
MEASUREMENTS CALCULATED BY V1Photos.COM ARE DEEMED HIGHLY RELIABLE BUT NOT GUARANTEED.



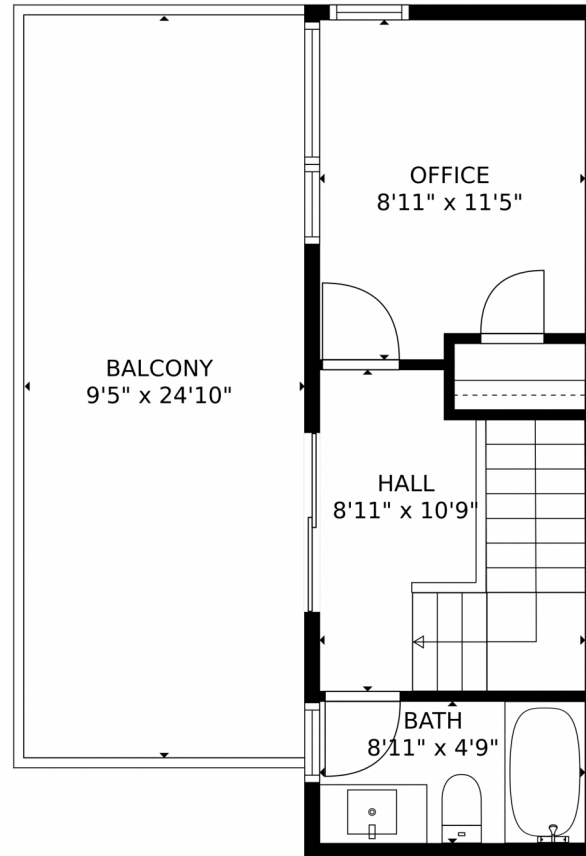
Disclaimer: Sizes and Dimensions are Approximate, Actual May Vary.



Valerie Skorka Westmark
303-981-0950
valeriewestmark@gmail.com



1525 Tennyson Street, Denver, CO 80204 — 3rd Level



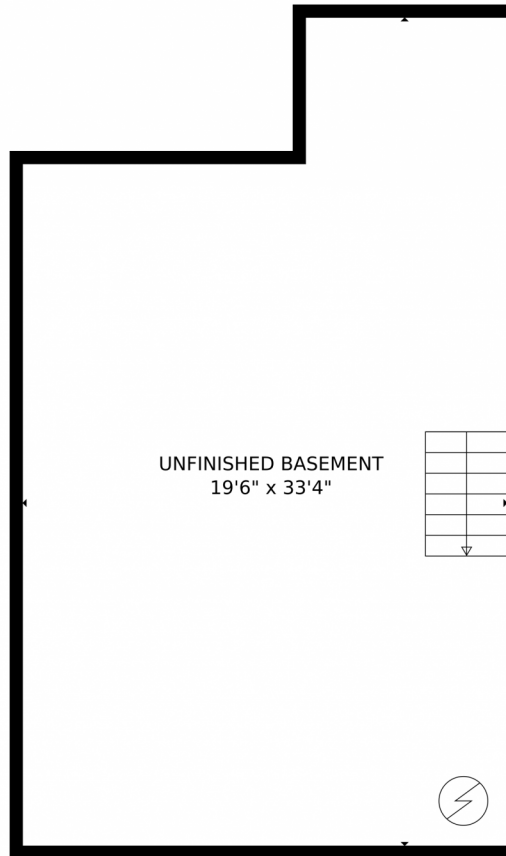
GROSS INTERNAL AREA
Below Ground: 0 sq. ft, FLOOR 2: 593 sq. ft, FLOOR 3: 524 sq. ft, FLOOR 4: 245 sq. ft
EXCLUDED AREAS: UNFINISHED BASEMENT: 584 sq. ft, GARAGE: 241 sq. ft, PORCH: 18 sq. ft,
PATIO: 230 sq. ft, BALCONY: 234 sq. ft
TOTAL: 1362 sq. ft
MEASUREMENTS CALCULATED BY V1Photos.com ARE DEEMED HIGHLY RELIABLE BUT NOT GUARANTEED.

Disclaimer: Sizes and Dimensions are Approximate, Actual May Vary.



Valerie Skorka Westmark
303-981-0950
valeriewestmark@gmail.com





GROSS INTERNAL AREA
Below Ground: 0 sq. ft, FLOOR 2: 593 sq. ft, FLOOR 3: 524 sq. ft, FLOOR 4: 245 sq. ft
EXCLUDED AREAS: UNFINISHED BASEMENT: 584 sq. ft, GARAGE: 241 sq. ft, PORCH: 18 sq. ft,
PATIO: 230 sq. ft, BALCONY: 234 sq. ft
TOTAL: 1362 sq. ft
MEASUREMENTS CALCULATED BY V1Photos.com ARE DEEMED HIGHLY RELIABLE BUT NOT GUARANTEED.



Disclaimer: Sizes and Dimensions are Approximate, Actual May Vary.



Valerie Skorka Westmark
303-981-0950
valeriewestmark@gmail.com



1525 Tennyson Street, Denver, CO 80204 – All Levels



GROSS INTERNAL AREA
 Below Ground: 0 sq. ft, FLOOR 2: 593 sq. ft, FLOOR 3: 524 sq. ft, FLOOR 4: 245 sq. ft
 EXCLUDED AREAS: UNFINISHED BASEMENT: 584 sq. ft, GARAGE: 241 sq. ft, PORCH: 18 sq. ft,
 PATIO: 230 sq. ft, BALCONY: 234 sq. ft
 TOTAL: 1362 sq. ft
 MEASUREMENTS CALCULATED BY V1Photos.COM ARE DEEMED HIGHLY RELIABLE BUT NOT GUARANTEED.



Disclaimer: Sizes and Dimensions are Approximate, Actual May Vary.



Valerie Skorka Westmark
 303-981-0950
 valeriewestmark@gmail.com

