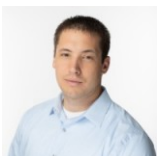




 Single Family  1652 SQFT  3 Beds  2/1 Baths  2 Car

PROPERTY DETAILS

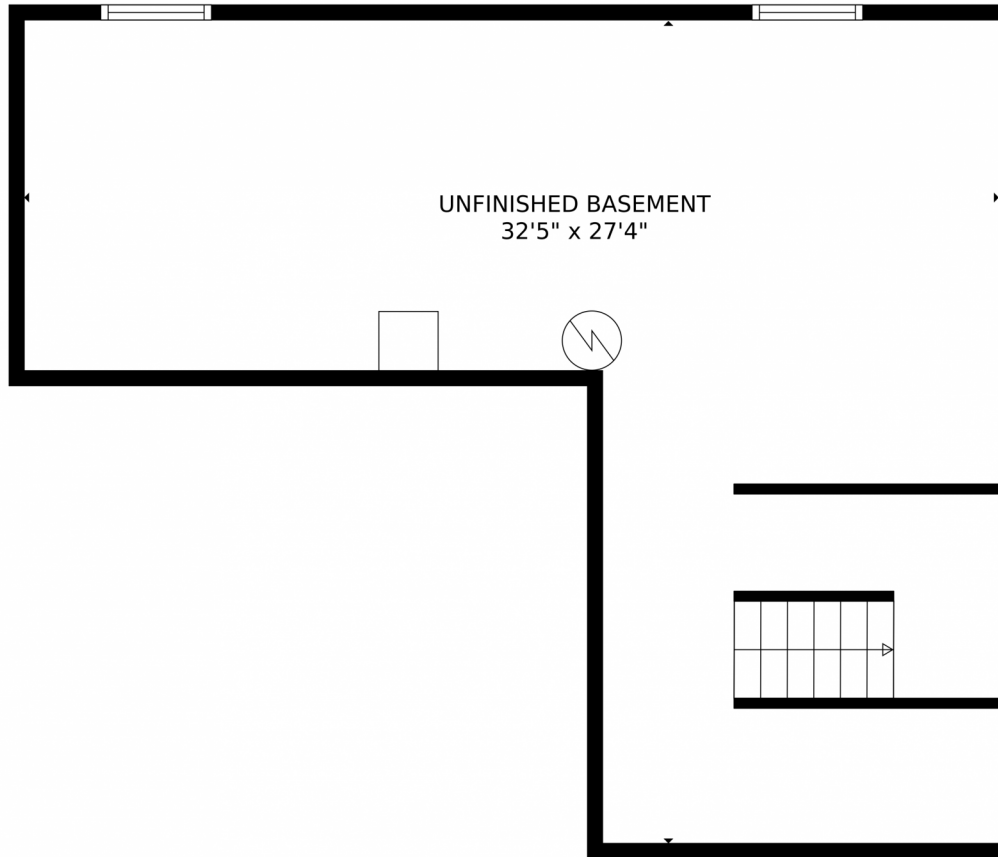
Welcome to 6722 Yocona Drive in Colorado Springs! This beautiful Single Family property offers 3 bedrooms, 2 full bathrooms, and 1 half bathroom. With 1652 sqft of living space and a 2-car garage, this home provides plenty of room for you and your family. The interior features light hardwood flooring, a spacious living room, a dining room with a view of the kitchen, and bedrooms designed for comfort. Step outside to the deck and enjoy the beautiful yard. The property also includes a basement and central air conditioning. Don't miss this opportunity to make this house your home!



Jordan Kermes
952-956-2958
jordan@kermesllc.com
<https://colorado.wedgewoodhomesrealty.com>



6722 Yocona Drive, Colorado Springs, CO 80925 – Lower Level



GROSS INTERNAL AREA
Below Ground: 0 sq. ft, FLOOR 2: 641 sq. ft, FLOOR 3: 899 sq. ft
EXCLUDED AREAS: UNFINISHED BASEMENT: 586 sq. ft, GARAGE: 353 sq. ft, DECK: 120 sq. ft,
PATIO: 32 sq. ft
TOTAL: 1540 sq. ft
MEASUREMENTS CALCULATED BY V1Photos.com ARE DEEMED HIGHLY RELIABLE BUT NOT GUARANTEED.

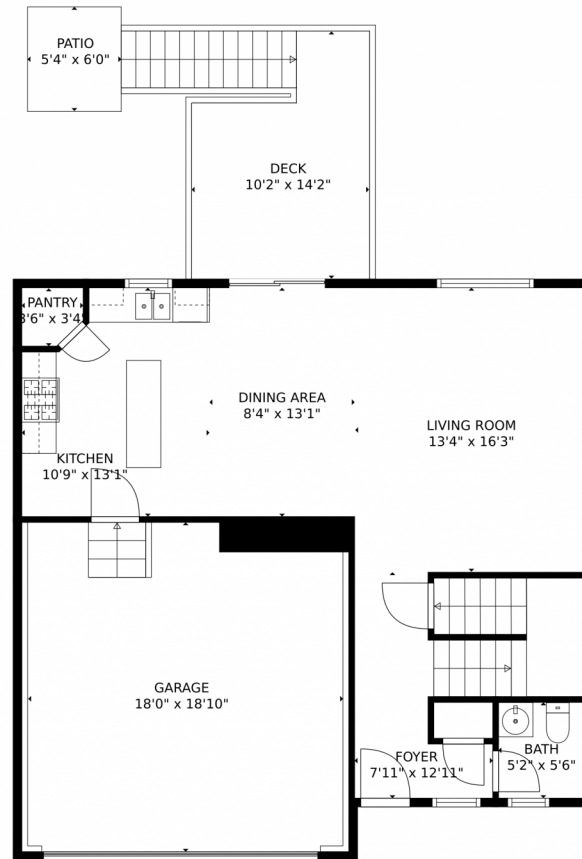
Disclaimer: Sizes and Dimensions are Approximate, Actual May Vary.



Jordan Kermes
952-956-2958
jordan@kermesllc.com
<https://colorado.wedgewoodhomesrealty.com>



6722 Yocona Drive, Colorado Springs, CO 80925 – Main Level



GROSS INTERNAL AREA
Below Ground: 0 sq. ft, FLOOR 2: 641 sq. ft, FLOOR 3: 899 sq. ft
EXCLUDED AREAS: UNFINISHED BASEMENT: 586 sq. ft, GARAGE: 353 sq. ft, DECK: 120 sq. ft,
PATIO: 32 sq. ft
TOTAL: 1540 sq. ft
MEASUREMENTS CALCULATED BY V1Photos.COM ARE DEEMED HIGHLY RELIABLE BUT NOT GUARANTEED.



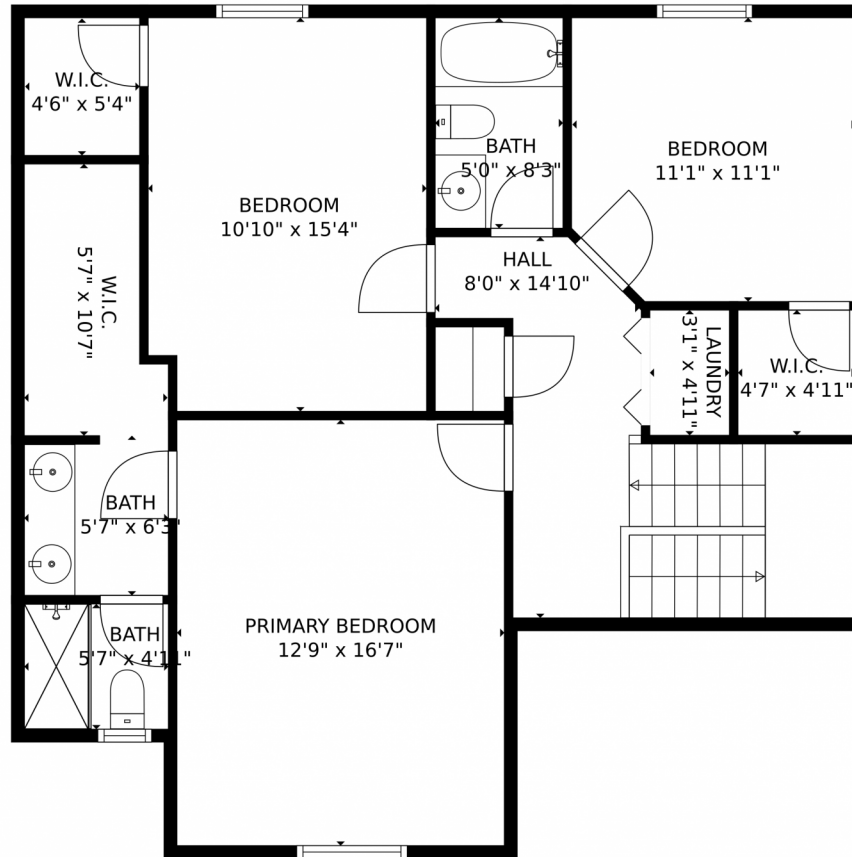
Disclaimer: Sizes and Dimensions are Approximate, Actual May Vary.



Jordan Kermes
952-956-2958
jordan@kermesllc.com
<https://colorado.wedgewoodhomesrealty.com>



6722 Yocona Drive, Colorado Springs, CO 80925 – Upper Levels



GROSS INTERNAL AREA
Below Ground: 0 sq. ft, FLOOR 2: 641 sq. ft, FLOOR 3: 899 sq. ft
EXCLUDED AREAS: UNFINISHED BASEMENT: 586 sq. ft, GARAGE: 353 sq. ft, DECK: 120 sq. ft,
PATIO: 32 sq. ft
TOTAL: 1540 sq. ft
MEASUREMENTS CALCULATED BY V1Photos.com ARE DEEMED HIGHLY RELIABLE BUT NOT GUARANTEED.



Disclaimer: Sizes and Dimensions are Approximate, Actual May Vary.



Jordan Kermes
952-956-2958
jordan@kermesllc.com
<https://colorado.wedgewoodhomesrealty.com>



Scan code
for more
property
details

6722 Yocona Drive, Colorado Springs, CO 80925 – All Levels



GROSS INTERNAL AREA
Below Ground: 0 sq. ft, FLOOR 2: 641 sq. ft, FLOOR 3: 899 sq. ft
EXCLUDED AREAS: UNFINISHED BASEMENT: 586 sq. ft, GARAGE: 353 sq. ft, DECK: 120 sq. ft,
PATIO: 32 sq. ft
TOTAL: 1540 sq. ft
MEASUREMENTS CALCULATED BY V1Photos.com ARE DEEMED HIGHLY RELIABLE BUT NOT GUARANTEED.



Disclaimer: Sizes and Dimensions are Approximate, Actual May Vary.



Jordan Kermes
952-956-2958
jordan@kermesllc.com
<https://colorado.wedgewoodhomesrealty.com>



Scan code
for more
property
details

