


 Single Family

 2036 SQFT

 3 Beds

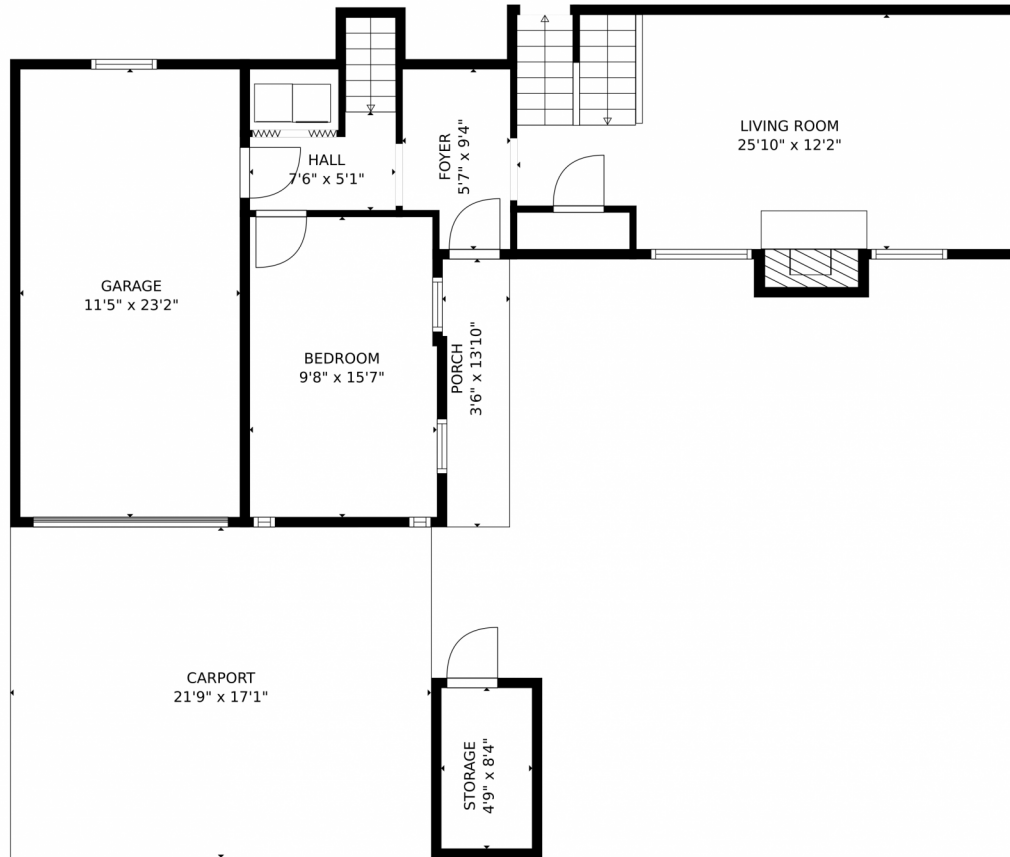
 3 Baths



Taylor Haas
 303-665-7368
 taylorh@coloradorpm.com
<https://www.coloradorpm.com/available-rental-properties-denv>



1762 South Jasmine Street, Denver, CO 80224 – Main Level



GROSS INTERNAL AREA
Below Ground: 686 sq. ft. FLOOR 2: 591 sq. ft. FLOOR 3: 677 sq. ft.
EXCLUDED AREAS: STORAGE: 113 sq. ft. PATIO: 797 sq. ft. GARAGE: 264 sq. ft.
PORCH: 46 sq. ft. CARPORT: 374 sq. ft. FIREPLACE: 5 sq. ft.
TOTAL: 1954 sq. ft.
MEASUREMENTS CALCULATED BY V1Photos.COM ARE DEEMED HIGHLY RELIABLE BUT NOT GUARANTEED.



Disclaimer: Sizes and Dimensions are Approximate, Actual May Vary.



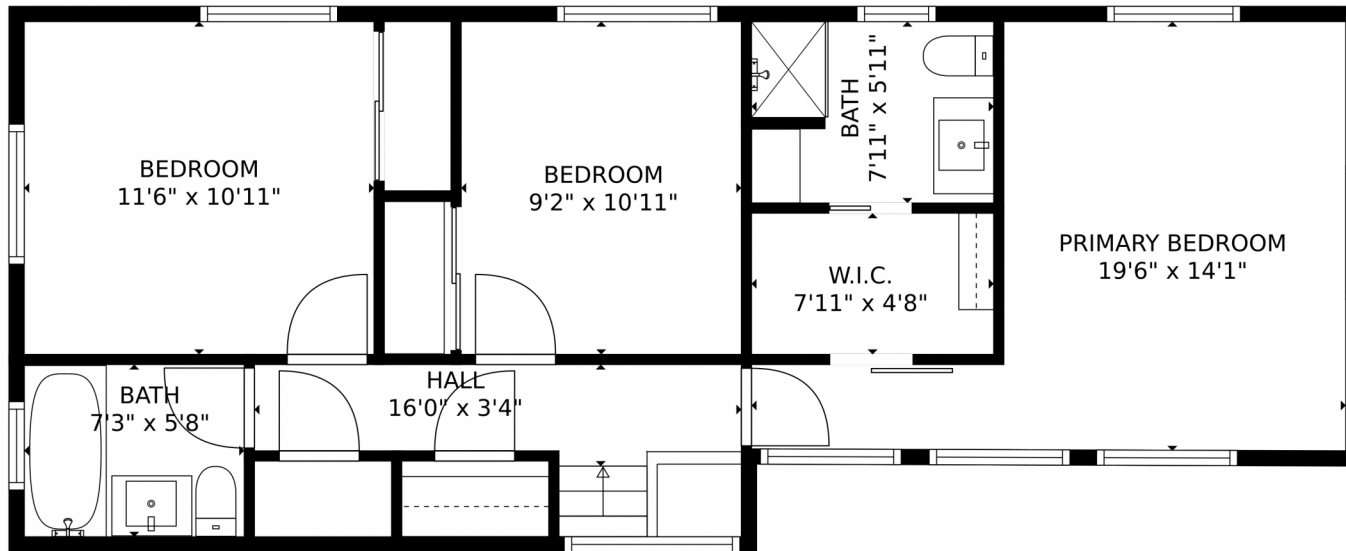
Taylor Haas
303-665-7368
taylorh@coloradorpm.com
<https://www.coloradorpm.com/available-rental-properties-denver>



Scan code
for more
property
details



1762 South Jasmine Street, Denver, CO 80224 – 2nd Level



GROSS INTERNAL AREA
Below Ground: 686 sq. ft. FLOOR 2: 591 sq. ft. FLOOR 3: 677 sq. ft.
EXCLUDED AREAS: STORAGE: 113 sq. ft. PATIO: 797 sq. ft. GARAGE: 264 sq. ft.
PORCH: 46 sq. ft. CARPORT: 374 sq. ft. FIREPLACE: 5 sq. ft.
TOTAL: 1954 sq. ft.
MEASUREMENTS CALCULATED BY V1Photos.com ARE DEEMED HIGHLY RELIABLE BUT NOT GUARANTEED.



Disclaimer: Sizes and Dimensions are Approximate, Actual May Vary.



Taylor Haas

303-665-7368

taylorh@coloradorpm.com

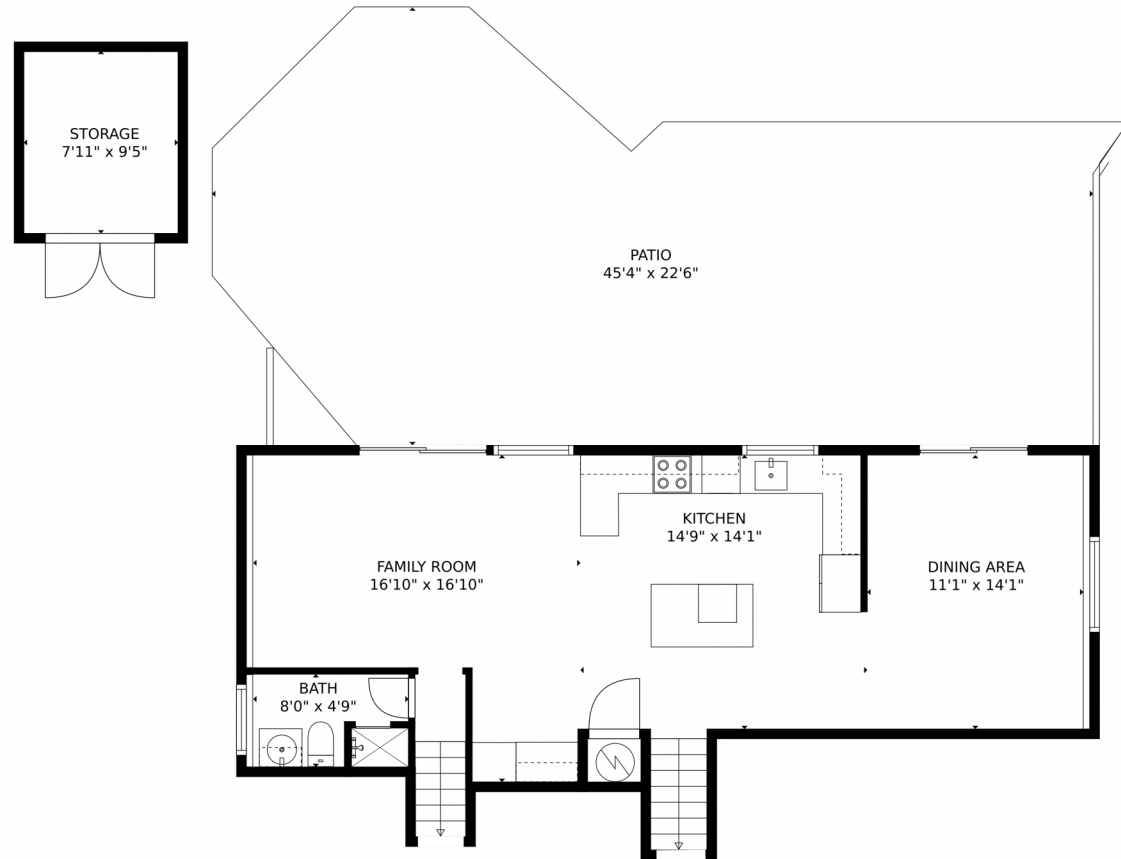
<https://www.coloradorpm.com/available-rental-properties-denver>



Scan code
for more
property
details



1762 South Jasmine Street, Denver, CO 80224 – Lower Level



GROSS INTERNAL AREA
Below Ground: 686 sq. ft. FLOOR 2: 591 sq. ft. FLOOR 3: 677 sq. ft.
EXCLUDED AREAS: STORAGE: 113 sq. ft. PATIO: 797 sq. ft. GARAGE: 264 sq. ft.
PORCH: 46 sq. ft. CARPORT: 374 sq. ft. FIREPLACE: 5 sq. ft.
TOTAL: 1954 sq. ft.
MEASUREMENTS CALCULATED BY V1Photos.COM ARE DEEMED HIGHLY RELIABLE BUT NOT GUARANTEED.



Disclaimer: Sizes and Dimensions are Approximate, Actual May Vary.



Taylor Haas
303-665-7368
taylorh@coloradorpm.com
<https://www.coloradorpm.com/available-rental-properties-denv>



Scan code
for more
property
details



1762 South Jasmine Street, Denver, CO 80224 – All Levels



GROSS INTERNAL AREA
Below Ground: 686 sq. ft, FLOOR 2: 591 sq. ft, FLOOR 3: 677 sq. ft
EXCLUDED AREAS: STORAGE: 113 sq. ft, PATIO: 797 sq. ft, GARAGE: 264 sq. ft,
PORCH: 46 sq. ft, CARPORT: 374 sq. ft, FIREPLACE: 5 sq. ft
TOTAL: 1954 sq. ft
MEASUREMENTS CALCULATED BY V1Photos.COM ARE DEEMED HIGHLY RELIABLE BUT NOT GUARANTEED.



Disclaimer: Sizes and Dimensions are Approximate, Actual May Vary.



Taylor Haas
303-665-7368
taylorh@coloradorpm.com
<https://www.coloradorpm.com/available-rental-properties-denver>

