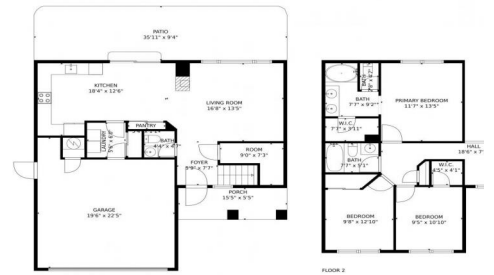




1285 North Monument Drive, Castle Rock, CO 80104 - All Levels



Single Family

1495 SQFT

3 Beds

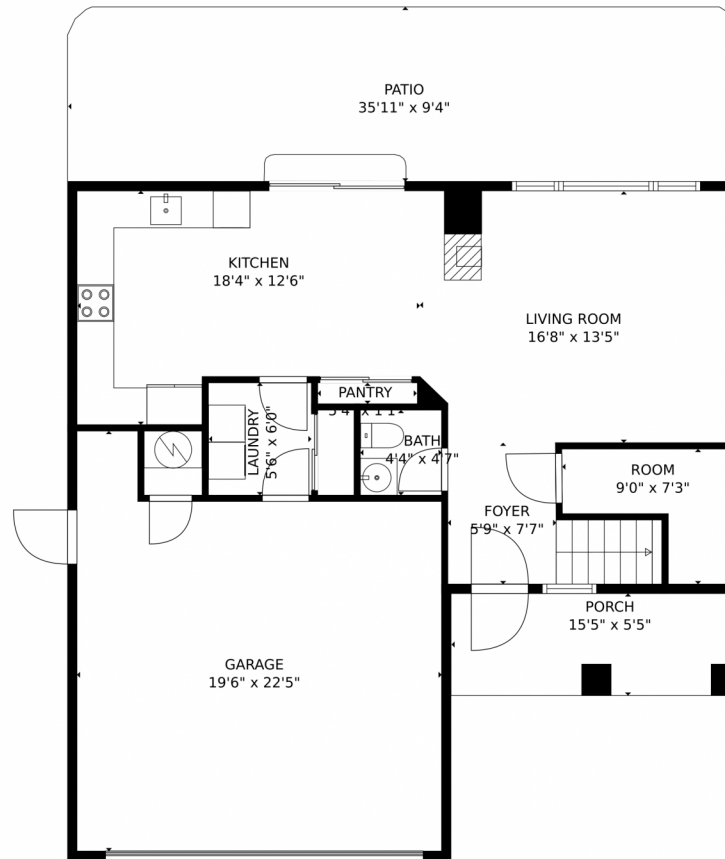
2 Baths



Taylor Haas
 303-665-7368
 taylorh@coloradorpm.com
<https://www.coloradorpm.com/available-rental-properties-denver>



1285 North Monument Drive, Castle Rock, CO 80104 – Main Level



GROSS INTERNAL AREA
FLOOR 1: 625 sq. ft, FLOOR 2: 749 sq. ft
EXCLUDED AREAS: GARAGE: 376 sq. ft, PATIO: 334 sq. ft, PORCH: 84 sq. ft
TOTAL: 1374 sq. ft
MEASUREMENTS CALCULATED BY V1Photos.com ARE DEEMED HIGHLY RELIABLE BUT NOT GUARANTEED.



Disclaimer: Sizes and Dimensions are Approximate, Actual May Vary.

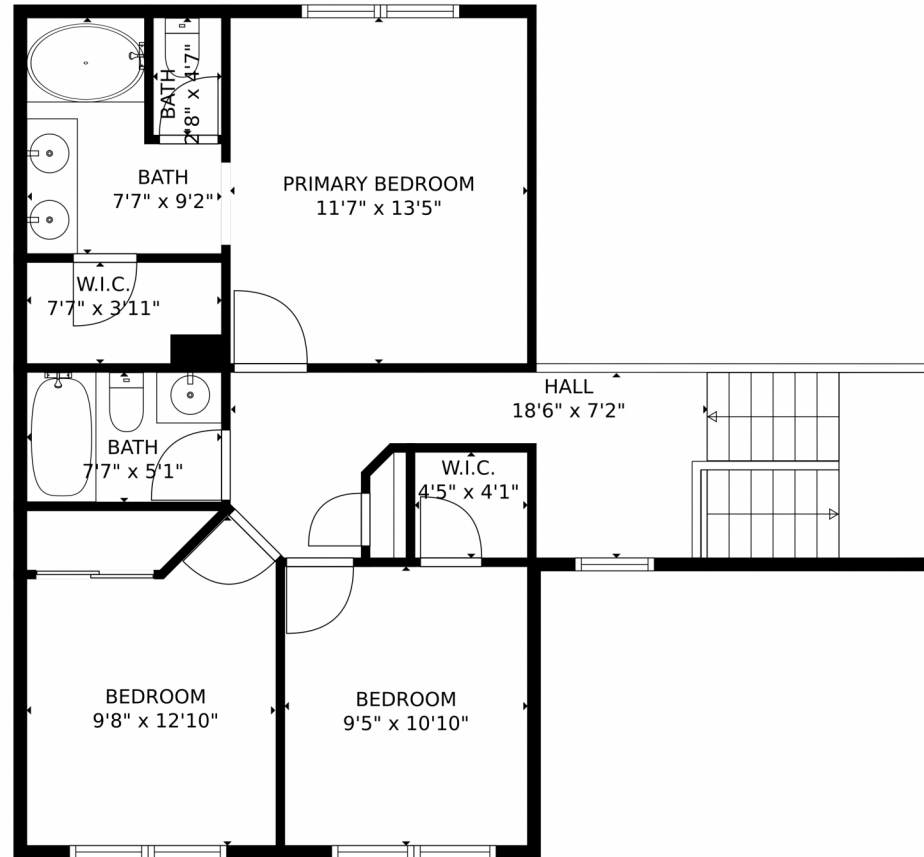


Taylor Haas
303-665-7368
taylorh@coloradorpm.com
<https://www.coloradorpm.com/available-rental-properties-denver>



Scan code
for more
property
details

1285 North Monument Drive, Castle Rock, CO 80104 – Upper Level



GROSS INTERNAL AREA
FLOOR 1: 625 sq. ft, FLOOR 2: 749 sq. ft
EXCLUDED AREAS: GARAGE: 376 sq. ft, PATIO: 334 sq. ft, PORCH: 84 sq. ft
TOTAL: 1374 sq. ft
MEASUREMENTS CALCULATED BY V1Photos.COM ARE DEEMED HIGHLY RELIABLE BUT NOT GUARANTEED.



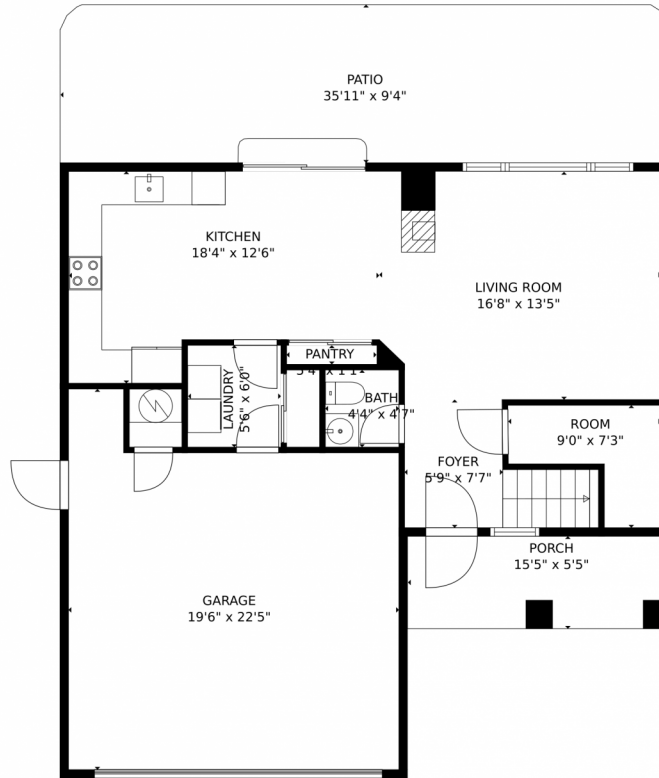
Disclaimer: Sizes and Dimensions are Approximate, Actual May Vary.



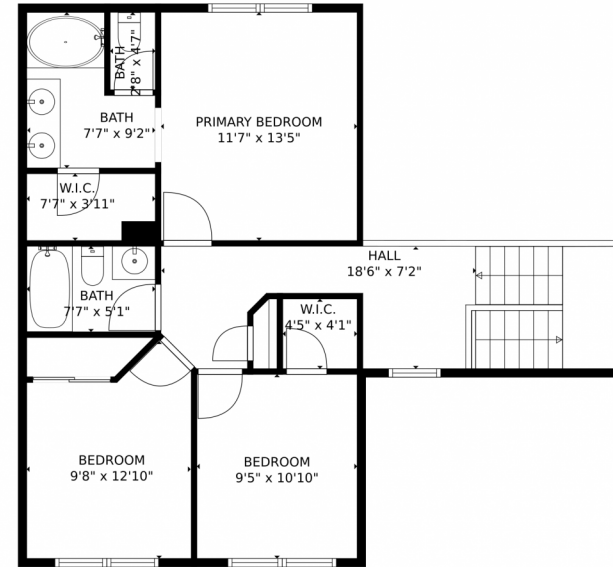
Taylor Haas
303-665-7368
taylorh@coloradorpm.com
<https://www.coloradorpm.com/available-rental-properties-denver>



1285 North Monument Drive, Castle Rock, CO 80104 – All Levels



FLOOR 1



FLOOR 2

GROSS INTERNAL AREA
FLOOR 1: 625 sq. ft, FLOOR 2: 749 sq. ft
EXCLUDED AREAS: GARAGE: 376 sq. ft, PATIO: 334 sq. ft, PORCH: 84 sq. ft
TOTAL: 1374 sq. ft
MEASUREMENTS CALCULATED BY V1Photos.COM ARE DEEMED HIGHLY RELIABLE BUT NOT GUARANTEED.



Disclaimer: Sizes and Dimensions are Approximate, Actual May Vary.



Taylor Haas
303-665-7368
taylorh@coloradorpm.com
<https://www.coloradorpm.com/available-rental-properties-denver>

