



2362 Wood Avenue  
 Colorado Springs, CO 80907  
 COMMUNITY: 2400 Wood Avenue Townhomes



Single Family



2155 SQFT



2 Beds



2 Baths



2 Car



0.07 Acre



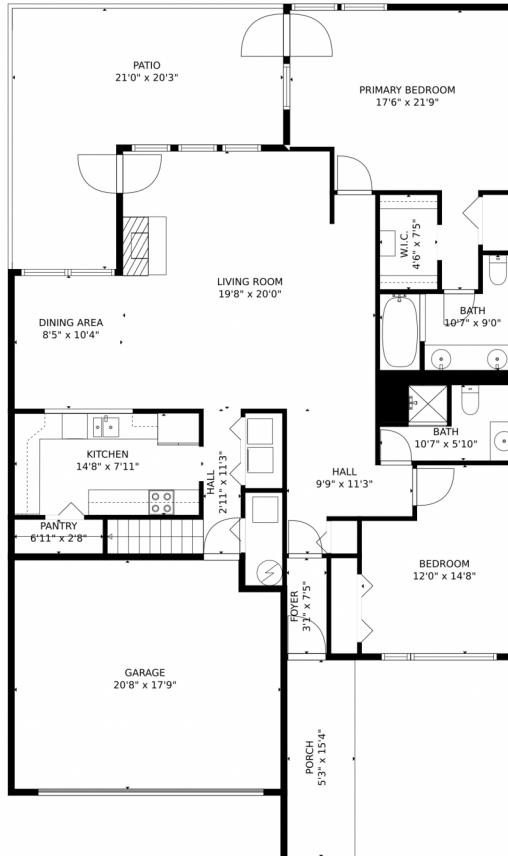
**Michelle Blessing**  
 719-649-4200  
 mblessing@erashields.com



Scan code  
 for more  
 property  
 details



# 2362 Wood Avenue, Colorado Springs, CO 80907 – Main Level



GROSS INTERNAL AREA  
FLOOR 1: 1477 sq. ft, FLOOR 2: 318 sq. ft  
EXCLUDED AREAS: GARAGE: 361 sq. ft, PORCH: 81 sq. ft, PATIO: 302 sq. ft  
OPEN TO BELOW: 538 sq. ft  
TOTAL: 1795 sq. ft  
MEASUREMENTS CALCULATED BY V1Photos.com ARE DEEMED HIGHLY RELIABLE BUT NOT GUARANTEED.



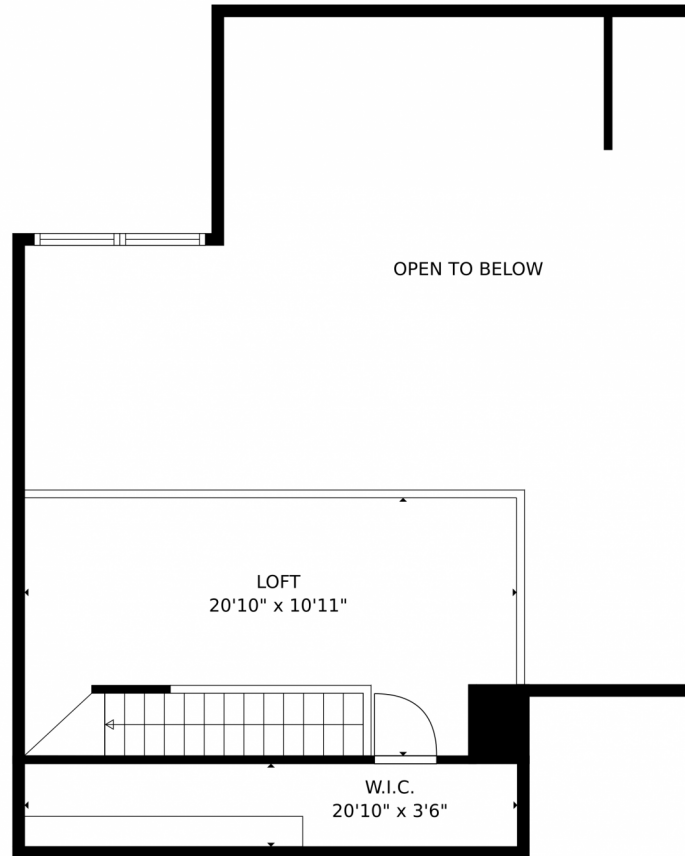
Disclaimer: Sizes and Dimensions are Approximate, Actual May Vary.



**Michelle Blessing**  
719-649-4200  
mblessing@erashields.com



# 2362 Wood Avenue, Colorado Springs, CO 80907 – Loft



GROSS INTERNAL AREA  
FLOOR 1: 1477 sq. ft, FLOOR 2: 318 sq. ft  
EXCLUDED AREAS: GARAGE: 361 sq. ft, PORCH: 81 sq. ft, PATIO: 302 sq. ft.  
OPEN TO BELOW: 538 sq. ft  
TOTAL: 1795 sq. ft  
MEASUREMENTS CALCULATED BY V1Photos.com ARE DEEMED HIGHLY RELIABLE BUT NOT GUARANTEED.



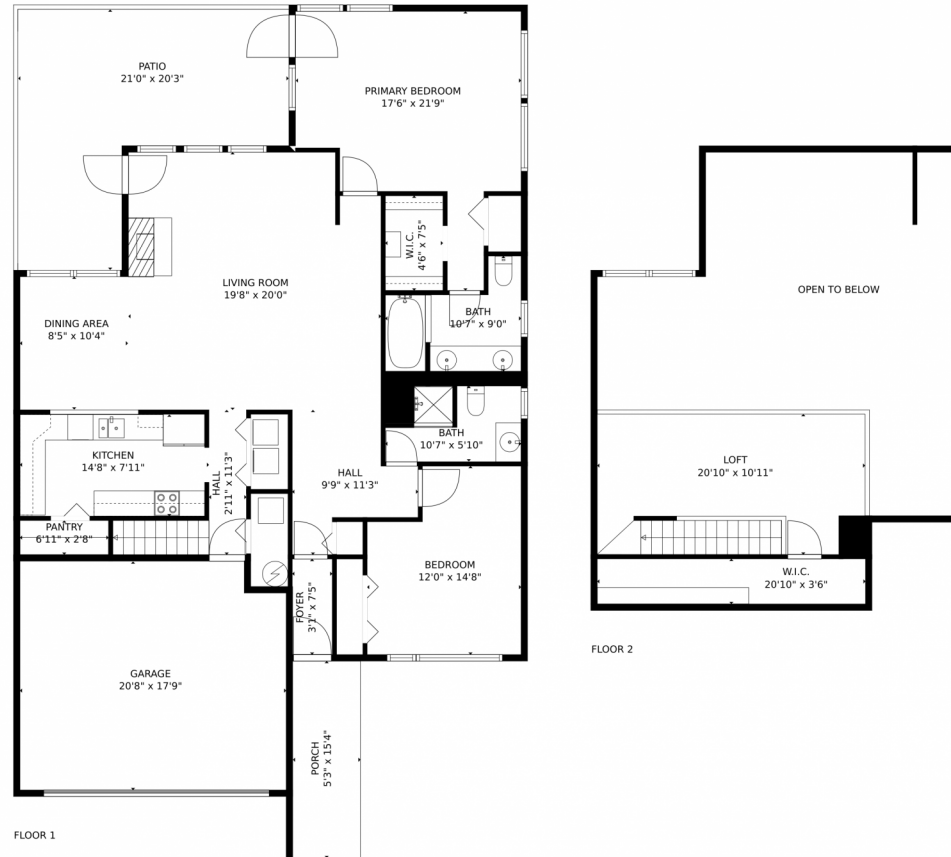
Disclaimer: Sizes and Dimensions are Approximate, Actual May Vary.



**Michelle Blessing**  
719-649-4200  
mblessing@erashields.com



# 2362 Wood Avenue, Colorado Springs, CO 80907 – All Levels



GROSS INTERNAL AREA  
FLOOR 1: 1477 sq. ft, FLOOR 2: 318 sq. ft  
EXCLUDED AREAS: GARAGE: 361 sq. ft, PORCH: 81 sq. ft, PATIO: 302 sq. ft.  
OPEN TO BELOW: 538 sq. ft  
TOTAL: 1795 sq. ft  
MEASUREMENTS CALCULATED BY V1Photos.com ARE DEEMED HIGHLY RELIABLE BUT NOT GUARANTEED.



Disclaimer: Sizes and Dimensions are Approximate, Actual May Vary.



**Michelle Blessing**  
719-649-4200  
mblessing@erashields.com

