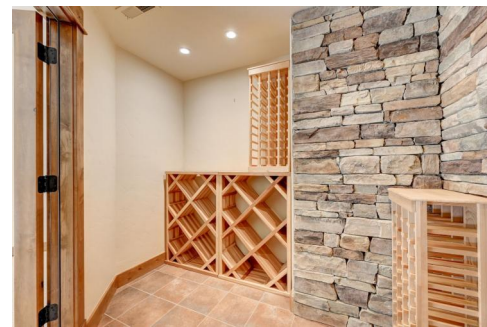


14053 Shiloh Ridge Road
Conifer, CO 80433

MLS # 7898407



Single Family



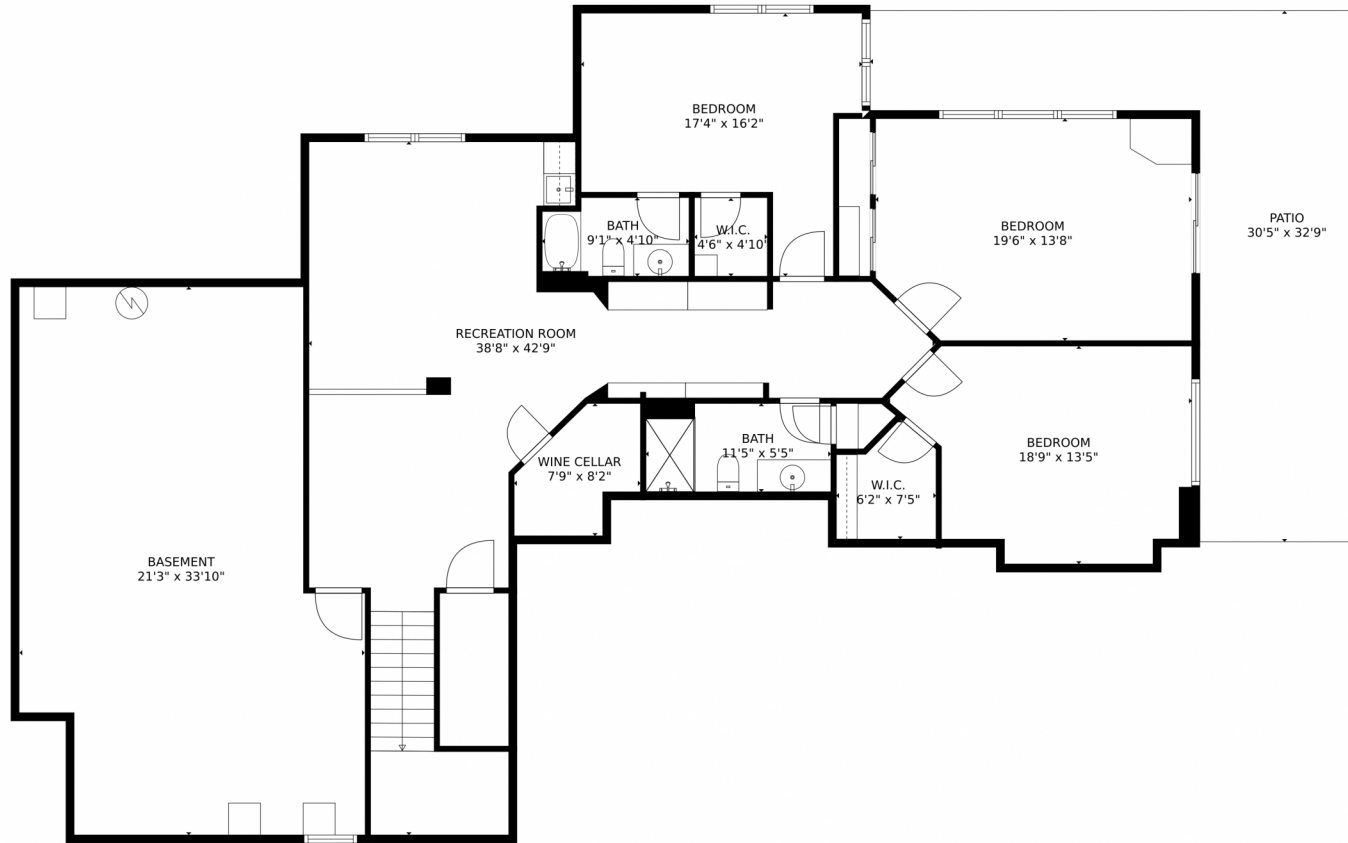
4620 SQFT



Sharon Pierce
720-364-1542
sharonpierce@yahoo.com



14053 Shiloh Ridge Road, Conifer, CO 80433 – Lower Level



GROSS INTERNAL AREA
Below Ground: 2228 sq. ft, FLOOR 2: 2543 sq. ft
EXCLUDED AREAS: PATIO: 617 sq. ft, WINE CELLAR: 47 sq. ft, GARAGE: 682 sq. ft,
BALCONY: 507 sq. ft, PORCH: 778 sq. ft
TOTAL: 4771 sq. ft
MEASUREMENTS CALCULATED BY V1Photos.com ARE DEEMED HIGHLY RELIABLE BUT NOT GUARANTEED.



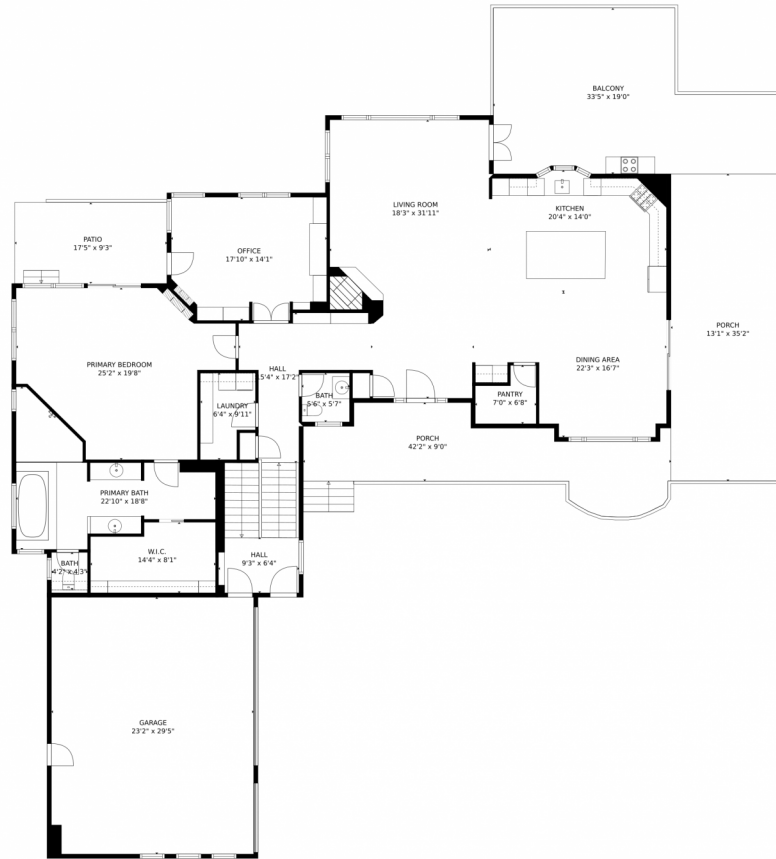
Disclaimer: Sizes and Dimensions are Approximate, Actual May Vary.



Sharon Pierce
720-364-1542
sharonpierce@yahoo.com



14053 Shiloh Ridge Road, Conifer, CO 80433 – Main Level



GROSS INTERNAL AREA
Below Ground: 2228 sq. ft, FLOOR 2: 2543 sq. ft
EXCLUDED AREAS: PATIO: 617 sq. ft, WINE CELLAR: 47 sq. ft, GARAGE: 682 sq. ft,
BALCONY: 507 sq. ft, PORCH: 778 sq. ft
TOTAL: 4771 sq. ft
MEASUREMENTS CALCULATED BY V1Photos.com ARE DEEMED HIGHLY RELIABLE BUT NOT GUARANTEED.



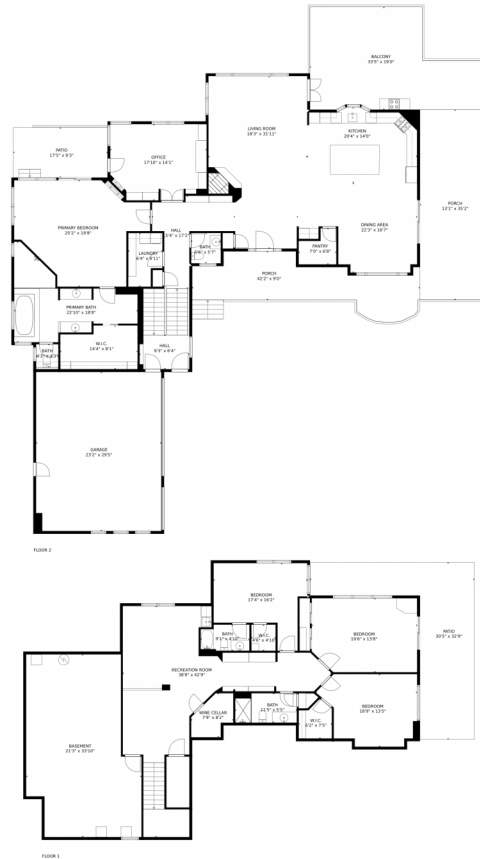
Disclaimer: Sizes and Dimensions are Approximate, Actual May Vary.



Sharon Pierce
720-364-1542
sharonpierce@yahoo.com



14053 Shiloh Ridge Road, Conifer, CO 80433 – All Levels



GROSS INTERNAL AREA
Below Ground: 2228 sq. ft, FLOOR 2: 2543 sq. ft
EXCLUDED AREAS: PATIO: 617 sq. ft, WINE CELLAR: 47 sq. ft, GARAGE: 682 sq. ft,
BALCONY: 507 sq. ft, PORCH: 778 sq. ft
TOTAL: 4771 sq. ft
MEASUREMENTS CALCULATED BY V1Photos.com ARE DEEMED HIGHLY RELIABLE BUT NOT GUARANTEED.



Disclaimer: Sizes and Dimensions are Approximate, Actual May Vary.



Sharon Pierce
720-364-1542
sharonpierce@yahoo.com

