
 Single Family

 2897 SQFT

 5 Beds

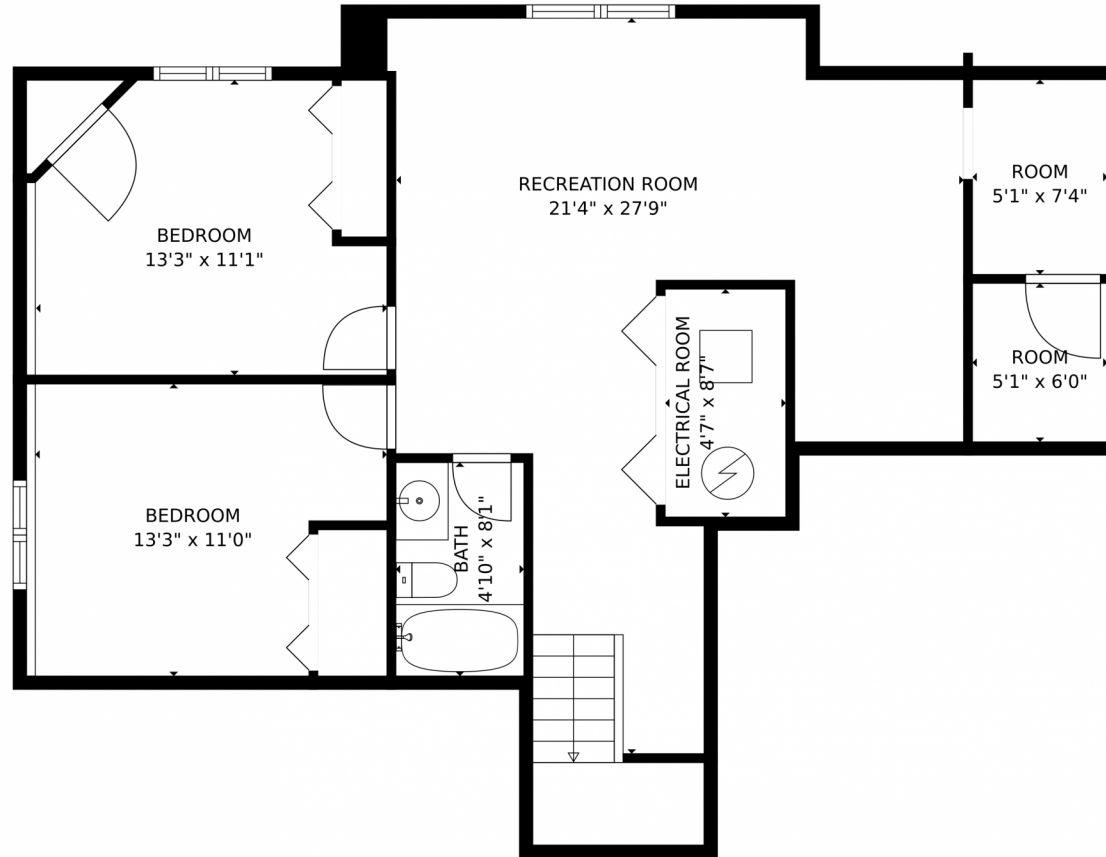
 3/1 Baths



Taylor Haas
 303-665-7368
 taylorh@coloradorpm.com
<https://www.coloradorpm.com/available-rental-properties-denver>



7338 Allens Park Drive, Colorado Springs, CO 80922 – Lower Level



GROSS INTERNAL AREA
Below Ground: 762 sq. ft. FLOOR 2: 918 sq. ft. FLOOR 3: 877 sq. ft.
EXCLUDED AREAS: ELECTRICAL ROOM: 39 sq. ft. ROOM: 69 sq. ft. GARAGE: 424 sq. ft.
PORCH: 124 sq. ft. DECK: 233 sq. ft. FIREPLACE: 7 sq. ft.
OPEN TO BELOW: 41 sq. ft.
TOTAL: 2557 sq. ft.
MEASUREMENTS CALCULATED BY V1Photos.com ARE DEEMED HIGHLY RELIABLE BUT NOT GUARANTEED.



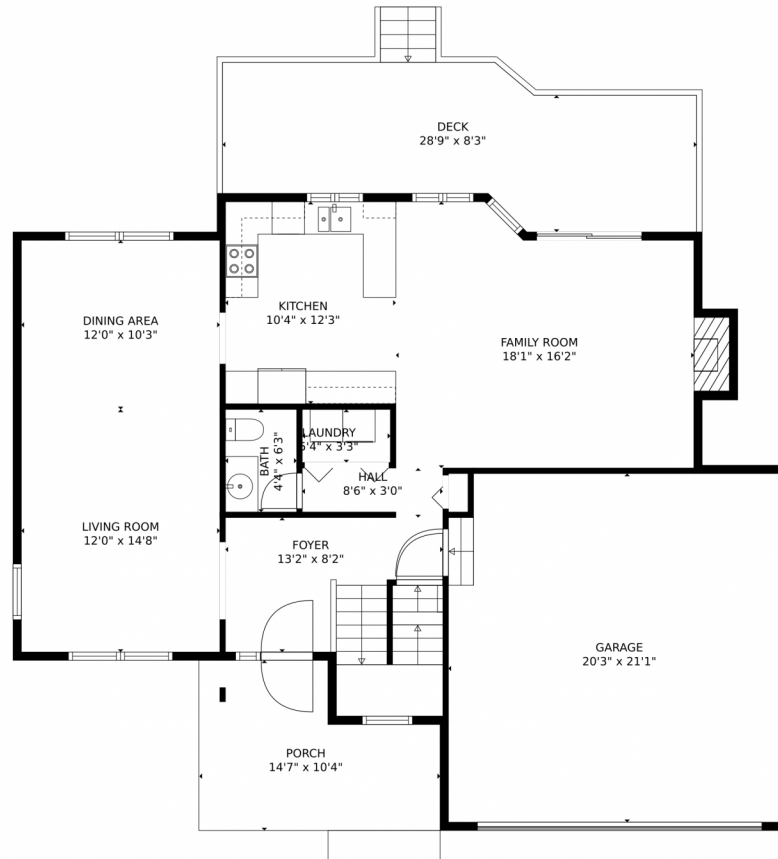
Disclaimer: Sizes and Dimensions are Approximate, Actual May Vary.



Taylor Haas
303-665-7368
taylorh@coloradorpm.com
<https://www.coloradorpm.com/available-rental-properties-denver>



7338 Allens Park Drive, Colorado Springs, CO 80922 – Main Level



GROSS INTERNAL AREA
Below Ground: 762 sq. ft. FLOOR 2: 918 sq. ft. FLOOR 3: 877 sq. ft.
EXCLUDED AREAS: ELECTRICAL ROOM: 39 sq. ft. ROOM: 69 sq. ft. GARAGE: 424 sq. ft.
PORCH: 124 sq. ft. DECK: 233 sq. ft. FIREPLACE: 7 sq. ft.
OPEN TO BELOW: 41 sq. ft.
TOTAL: 2557 sq. ft.
MEASUREMENTS CALCULATED BY V1Photos.COM ARE DEEMED HIGHLY RELIABLE BUT NOT GUARANTEED.



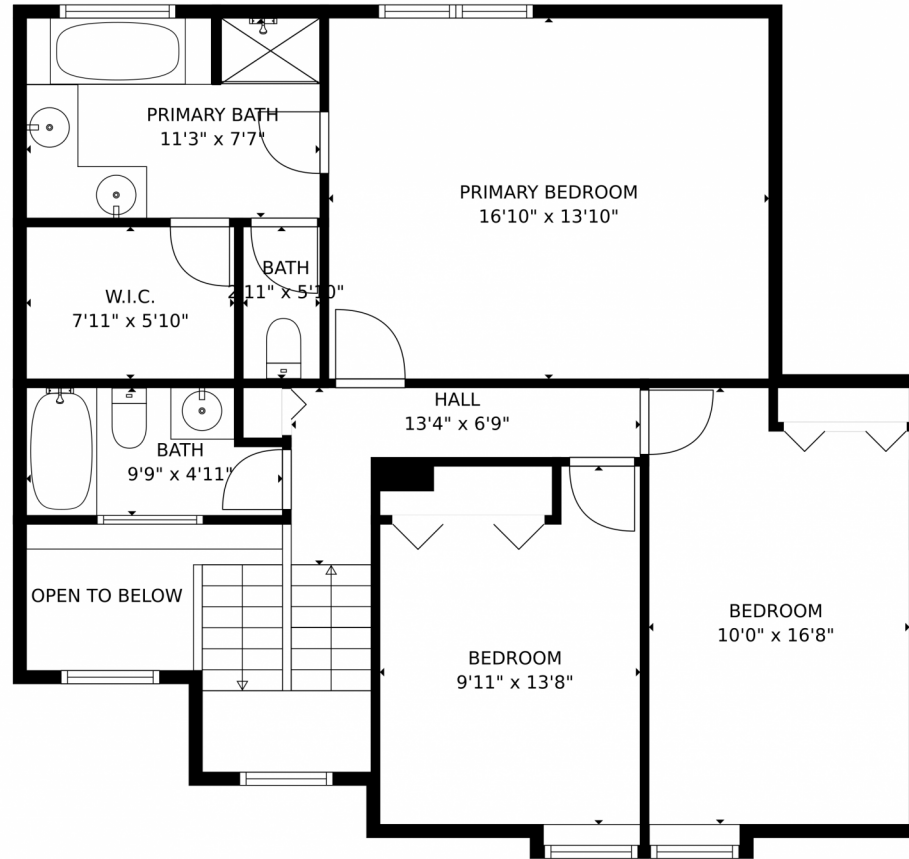
Disclaimer: Sizes and Dimensions are Approximate, Actual May Vary.



Taylor Haas
303-665-7368
taylorh@coloradorpm.com
<https://www.coloradorpm.com/available-rental-properties-denv>



7338 Allens Park Drive, Colorado Springs, CO 80922 – Upper Level



GROSS INTERNAL AREA
Below Ground: 762 sq. ft. FLOOR 2: 918 sq. ft. FLOOR 3: 877 sq. ft.
EXCLUDED AREAS: ELECTRICAL ROOM: 39 sq. ft. ROOM: 69 sq. ft. GARAGE: 424 sq. ft.
PORCH: 124 sq. ft. DECK: 233 sq. ft. FIREPLACE: 7 sq. ft.
OPEN TO BELOW: 41 sq. ft.
TOTAL: 2557 sq. ft.
MEASUREMENTS CALCULATED BY V1Photos.com ARE DEEMED HIGHLY RELIABLE BUT NOT GUARANTEED.



Disclaimer: Sizes and Dimensions are Approximate, Actual May Vary.



Taylor Haas
303-665-7368
taylorh@coloradorpm.com
<https://www.coloradorpm.com/available-rental-properties-denv>



7338 Allens Park Drive, Colorado Springs, CO 80922 – All Levels



GROSS INTERNAL AREA
Below Ground: 762 sq. ft. FLOOR 2: 918 sq. ft. FLOOR 3: 877 sq. ft.
EXCLUDED AREAS: ELECTRICAL ROOM: 39 sq. ft. ROOM: 69 sq. ft. GARAGE: 424 sq. ft.
PORCH: 124 sq. ft. DECK: 233 sq. ft. FIREPLACE: 7 sq. ft.
OPEN TO BELOW: 41 sq. ft.
TOTAL: 2557 sq. ft.
MEASUREMENTS CALCULATED BY V1Photos.com ARE DEEMED HIGHLY RELIABLE BUT NOT GUARANTEED.



Disclaimer: Sizes and Dimensions are Approximate, Actual May Vary.



Taylor Haas
303-665-7368
taylorh@coloradorpm.com
<https://www.coloradorpm.com/available-rental-properties-denver>



Scan code
for more
property
details

